

Dietrich's Jersey Supreme At West End Fair

(Continued from Page A30)

JERSEY

1.Douglas Boop, Jennifer Hummel; 2.Kyle Heimbach; 3.Kelly Roush
 INTERMEDIATE CALF: 1.Jonathan Dietrich; 2.Jonathan Dietrich; 3.Jonathan Dietrich
 SR CALF: 1.Jonathan Dietrich; 2.Jonathan Dietrich; 3.Branden Heimbach
 JR YEARLING: 1.Jonathan Dietrich; 2.Matt Sanders; 3.Kelly Roush
 INTERMEDIATE YEARLING: 1.Jonathan Dietrich; 2.Jonathan Dietrich
 JR CHAMPION: Jonathan Dietrich
 RESERVE JR CHAMPION: Jonathan Dietrich
 AGED DRY COW: 1.Branden Heimbach
 JR 2-YR-OLD: 1.Douglas Boop; 2.Matt Sanders; 3.Jeff Sanders
 3-YR-OLD: 1.Rebecca Dietrich; 2.Jonathan Dietrich; 3.Kelly Roush
 4-YR-OLD: 1.Matt Sanders; 2.Jeff Sanders; 3.Daniel Rishel
 5-YR-OLD: 1.Amy Jo Sander; 2.San-Be Farms; 3.Branden Heimbach
 SR CHAMPION: Rebecca Dietrich
 RESERVE SR CHAMPION: Douglas Boop
 GRAND CHAMPION: Rebecca Dietrich
 RESERVE GRAND CHAMPION: Douglas Boop
 DAIRY HERD: 1.San-Be Farms; 2.Branden Heimbach; 3.Kyle Heimbach
 PRODUCE OF DAM: 1.Jonathan Dietrich
 DAM, DAUGHTER: 1.Jonathan Dietrich; 2.San-Be Farms; 3.Rebecca Dietrich

AYRSHIRE

JR CALF: 1.Daniel Rishel; 2.Daniel Rishel
 INTERMEDIATE CALF: 1.Jennifer Rishel
 SR CALF: 1.Daniel Rishel
 SUMMER YEARLING: 1.Daniel Rishel
 JR YEARLING: 1.Daniel Rishel
 INTERMEDIATE YEARLING: 1.Daniel Rishel
 SR YEARLING: 1.Daniel Rishel
 JR CHAMPION: Daniel Rishel
 RESERVE JR CHAMPION: Daniel Rishel
 SR 2-YR-OLD: 1.Daniel Rishel
 3-YR-OLD: 1.Daniel Rishel
 SR CHAMPION: Daniel Rishel
 RESERVE SR CHAMPION: Daniel Rishel

GRAND CHAMPION: Daniel Rishel
 RESERVE GRAND CHAMPION: Daniel Rishel
 PRODUCE OF DAM: 1.Daniel Rishel

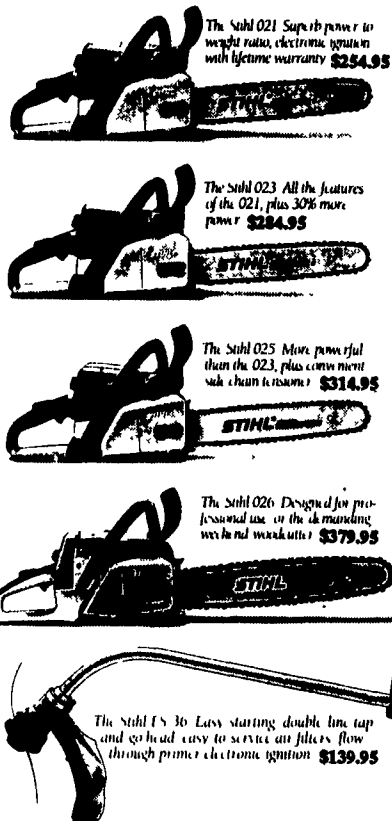
HOLSTEIN

BULL CALF: 1.Zi-We Dairy Farm
 JR CALF: 1.Daouglas Boop; 2.Jonathan Boop; 3.Jason Gessner
 INTERMEDIATE CALF: 1.Richard Klingler; 2.Douglas Boop; 3.Leslie Kenamond
 SR CALF: 1.Douglas Boop; 2.Daniel Sander; 3.Jason Wolfe
 SUMMER YEALRING: 1.Steven Sanders; 2.Zi-We Dairy Farm; 3.Jonathan Boop
 JR YEALRING: 1.Daniel Kenamond; 2.Douglas Boop; 3.Tiffany Zimmerman
 INTERMEDIATE YEALRING: 1.Denea Johnson; 2.Richard Klingler; 3.Mark Mapes
 SR YEALRING: 1.Troy Zimmerman; 2.Eric Lohr
 JUNIOR CHAMPION: Richard Klingler
 RESERVE JR CHAMP: 3-4-YR-OLD DRY COW: 1.Douglas Boop; 2.Douglas Boop; 3.Jason Wolfe
 AGED DRY COW: 1.Zi-We Dairy Farms; 2.Zi-We Dairy Farms
 JR 2-YR-OLD: 1.Douglas Boop; 2.Justin Spangler; 3.Michael Zimmerman
 SR 2-YR-OLD: 1.Jason Wolfe; 2.Kevin Gessner; 3.Douglas Boop
 3-YR-OLD: 1.Jonathan Boop; 2.Zi-We Dairy Farm; 3.Denea Johnson
 4-YR-OLD: 1.Douglas Boop
 5-YR-OLD: 1.Jonathan Boop; 2.Braden Heimbach; 3.Zi-We Dairy Farm
 SENIOR CHAMPION: Jonathan Boop
 RESERVE SR CHAMP: Jason Wolfe
 GRAND CHAMPION: Jonathan Boop
 RESERVE GRAND CHAMP: Jason Wolfe
 JR BEST 3-FEMALES: 1.Douglas Boop; 2.Jonathan Boop; 3.Justin Spangler
 DAIRY HERD: 1.Jonathan Boop; 2.Douglas Boop; 3.Zi-We Dairy Farm
 PRODUCE OF DAM: 1.Zi-We Dairy Farm; 2.Justin Spangler; 3.Zi-We Dairy Farm
 DAM, DAUGHTER: 1.Zi-We Dairy Farm; 2.Jason Wolfe; 3.Douglas Boop
 BEST 3 FEMALES: 1.Douglas Boop; 2.Zi-We Dairy Farm; 3.Justin Spangler



From the left, Daniel Rishel shows his open division grand champion Ayrshire, while Jennifer Rishel shows the junior champion and reserve grand champion.

The Grown Man's Candy Store.



We respectfully request that you do not drool on this ad (Although we couldn't blame you) We've got every man's fantasy here Powerful, smooth-running machines that perform with precision and let you work with speed and efficiency But if, heaven forbid, you think a chain saw is a chain saw, or that all trimmers and blowers are alike, we suggest you visit one of the full-service Suhl dealers listed below Better yet, talk to any man who owns a Suhl He'll give you a more enthusiastic sales pitch than any ad we could ever write

For The Part Of You That Promised You'd Never Compromise.

STIHL®

Available at these servicing dealers

- | | | |
|--|---|--|
| Bechtelsville
PASSMORE SERVICE CENTER, INC.
RD 1, Rt. 100
215-367-9084 | Ephrata, Hershey
HOLLINGER'S LAWN & GARDEN EQUIP.
Ephrata, PA 717-738-1131
717-856-2710
Hershey, PA 717-653-4060 | Ono
SHUEY'S SALES & SERVICE
Jonestown Rd.
717-865-4915 |
| Dallastown
TRI-BORO CONCRETE, INC.
485 Locust St.
717-246-3095
1-800-632-9018 | Gap
GAP POWER EQUIPMENT
Corner of Rt. 30 & Rt. 807
717-442-8970 | Ronks
A & B SALES & SERVICE
370 Newport Road
2 Miles South of Rt. 23
Along 772 Thru Monticory |
| East Earl
GOODS LAWN & GARDEN CENTER
Route 23
717-364-4026 Ext. 34 | Hamburg
SHARTLESVILLE FARM SERVICE
RD 1, Box 1392
215-488-1025 | Shippensburg
LEINBACH FARM EQUIP.
1120 Miller Hwy.
717-532-3511 |
| Elizabethtown
MESSICK FARM EQUIPMENT, INC.
Rheoma Exit-Rt. 283
Elizabethtown, PA
717-367-1319, 717-653-8867 | Jonestown
BLUE MOUNTAIN ENTERPRISES, INC.
Rt. 72 South
717-965-2994 | Tamaqua
CHARLES S. SNYDER, INC.
RD 3
717-386-5845 |
| Elm/Lebanon
BOMBERGER'S LAWN & GARDEN
Elm: 717-664-4663
Lebanon: 717-272-4155 | Myerstown
EBLING LAWN & GARDEN SERVICE
800 E. Lincoln Ave.
717-866-6720 | Whiteford MD
ENFIELD EQUIPMENT INC.
720 Wheeler School Rd.
301-879-5090 |
| Ephrata
WES STAUFFER ENGINES & EQUIPMENT
23 Pleasant Valley Rd.
717-738-4215 | | |

Distributed By Keystone Stihl

REDI-DOCK®

★ **NEW** Lease Program Available



Redi-Dock System economically expands and diversifies loading and access capabilities

- Cost less than conventional construction
- Modular configuration maximizes versatility
- Allows expansion of warehouse space
- Installed without alterations to existing structure
- Quick and easy placement and relocation
- Offers tenants more flexibility
- No permits required

(800) 724-4881 **Reading Precast** Inc. (215) 926-5000



Brillion® FIELD DAY

MINIMUM TILLAGE DEMONSTRATION

See the entire line of the latest equipment from Brillion Iron Works, Inc.
Presented by:

Landis Bros., Inc.
Lancaster, PA
717-291-1046

Adamstown Equip., Inc.
Adamstown, PA
215-484-4391

Date: Thursday, Sept. 2 Friday, Sept. 3 (rain date)
Time: 10:00 am to 3:00 pm
Place: Carl Myer Farm
 292 Elm Road, Lititz, PA 717-665-4189

DIRECTIONS:
Rt. 501 North of Lititz, Go West on Newport Road to Village of Elm, Go South on Elm Road & Watch for Signs



High Clearance S-Tine Field Cultivator
20'6" working width



Landcommander
3 shank - 30" spacing,
disc spacing: 15" front - 7 1/2" rear
5 shank - 24" spacing,
disc spacing: 15" front - 7 1/2" rear

3 Point Chisel Plows
2-bar 5-standards
3-bar 7-standards

Deep-Til 5 Shank

This is an excellent opportunity to operate these machines in actual field conditions. You drive them and tell us how we're doing. Our factory-representative and salesmen will be happy to assist you in any way they can.
See you there!