

USED TRACTORS

JD 4250, cab & air, quad JD 2550 (3) JD 4450, MFWD, cab & air, powershift, sharp JD 4430, 1976, excellent JD 4320 JD 4240, cab & air JD 4240, 4 post JD 4230, cab & air, power shift JD 4030, gas JD 2940, 4WD JD 2010 JD 2550 w/240 loader	JD 830, 2 cylinder JD 2350 JD 1050 w/470 hrs. IH 5088, cab & air IH 885 w/cab IH 884, SOLD hrs. IH 768 IH 656, gas IH 544 IH 384, power steering Ford 2000, gas Ford 4000, gas
---	--

Case IH 595, like new, 640 hrs.

INDUSTRIAL

JD 310 TLB w/cab, excellent Case 1835 skid steer Ford 1710 TLB, 4WD	MF 200 diesel crawler loader, 4 In 1 bucket Gehl 4400 skid steer loader
---	---

USED PLOWS

Ford 3 btm. 3 pt. hitch, spring reset plow White 6 btm., 16" spring reset plow IH consertill 10' JD 3 btm. roll over plow JD 5 btm. on land hitch	JD 8 btm. 2800 varied width on land hitch plow IH 710 8 btm. 18" spring reset, on land hitch JD 2500 5 btm. 18" spring reset JD 2500 6 btm. auto reset
---	---

USED COMBINES

244 JD corn heads 444 JD corn heads 443 corn head 643 corn head	JD 215 flex head JD 6620, 1982, sharp JD 6620, 1979, excellent
--	--

IH 1640, 400 hrs., like new

HAY EQUIPMENT

NH 852 round baler NH 472 haybine Gehl 1850 round baler	JD 348 wire baler w/thrower JD 410 round baler NH 320 baler w/kicker, like new
---	--

MISCELLANEOUS

JD 7000 6 row liquid planter Field Queen 3 row wide cornhead Brillion 21' hyd. fold roller harrow Kewanee hyd. fold 20' roller harrow, like new Kewanee 21' hyd. fold disc Taylorway 25' disc	JD 110 disc JD 115 disc IH 760 offset disc, very good Gehl 72C flail chopper, excellent Gehl 960 forage wagon w/roof Glenco soli finisher, 12' AC Air Champ 8 row bean planter, no till
---	--

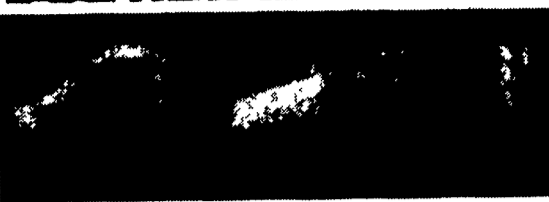
D & R EQUIPMENT INC.

Rt. 579, Ringoes, New Jersey
(908) 782-5082

GET READY FOR FALL SPECIALS



• 5212 DISC MOWER CONDITIONER,
12'- ONE ONLY- DEMO- List \$17,929
OUR OLD PRICE- \$14,450 NOW \$12,975
Limited Time Offer!
• 5209 DISC MOWER COND.
9'- ONE ONLY- DEMO- List \$13,770
OUR OLD PRICE- \$11,800 NOW \$9,975



USED FORAGE, MATERIAL HANDLING & TILLAGE



Tag 2478- Case IH 3205 3 Pt. Disc Mower
Tag 2485- Dion 1016 3 Beater Roof Forage Box
2 Yrs. Old
Tag 2419- Dion 16 Ft. 3 Beater Forage Box 10
Ton Gear
Tag 2429- Dion 16 Ft. 3 Beater Forage Box-
Rough
Tag 2420- Gehl 970 16 Ft. 3 Beater Roof
Forage Box- Tandem Gear
Tag 2421- Gehl 970 16 Ft. 3 Beater Roof
Forage Box- Tandem Gear
Tag 2413- Grove 16 Ft. 3 Beater Forage Box
10 Ton Gear
Tag 2569- EZ 6 Ft. 3 Beater Roof Forage Box-
Tandem Gear
Tag 2458- Gehl FB99 Forage Blower
Tag 2024- Gehl FB1580 Forage Blower
Tag 2529- Hydra Mac Model 10 30 HP Skid
Loader
Tag 2408- Gehl 4500 40 HP Skid Loader
Tag 2461- Brillion 11 Ft. Packer 4" Axle
Tag 2430- Brillion 12 Ft. Packer 4" Axle

Tag 2416- IH 13 Ft. Mulcher- Nice
Tag 2525- Dunham 14 Ft. Packer
Tag 2440- Brillion 10 Ft. Mulcher
2- Chatanogoo 4 Ft. Packer Pups
Tag 2405- John Deere 210 14 Ft. Disc
Tag 2404- Bush Hog 1436 12 Ft. Disc
IH 574 Diesel Utility Tractor- Fair
Pequea 603 3 Ton Running Gear
Country Boy 175 Bu. Bin & 10
Ton Gear
New Idea 325-314 2 Row Narrow
Picker w/Sheller
New Holland 56 Hay Rake
Vicon 22 Ft. 3 Pt. V Rake
Artway 800 TMR Mixer w/Scales,
2 Yrs. Old
Lilliston 5 Ft. 3 Pt. Rotary Chopper
NH 315 Baler w/Thrower
Wic 8 HP Bedding Chopper,
2 Yrs. Old
Gehl Model 100 Hyd. Grinder/Mixer
Wenger 12 Ton Tandem Axle
Running Gear

USED UNI EQUIPMENT

708 Uni Cab, Air
802 Uni 4WD
2-767 Super Chopper
1-868 Chopper w/4R Head & Pickup
839 Uni Husker
3- 737 Uni Husker
1-6504 4RN Stripper Head
1-738 4RN Stripper Head
1-844 4RN Stripper Head
1-John Deere 3RN Corn Head- Nice

UNI SYSTEM SPECIALISTS!

New In Stock: 803C Power Unit- 4WD Demo
Super Deal Now
6220 Uni Chopper
6221 Feeder Horse w/Reverse
6240 4RN Corn Head (JD)
6280 7 Ft. Hay Pickup

*Programs-Programs
Waiver Of Finance- Cash Discounts
We Are Ready To Deal!*

Umberger's Of Fontana, Inc.

Rt. 4, Box 545, Lebanon, PA 17042 - 8 Miles East Of Hershey On Rt. 322
Hours: Mon.. thru Thurs. 7:30 - 6, Fri. 7:30 - 8, Sat. 7:30 - 4 717-866-5161

Sales, Service & Parts For
AGCO Allis, Kubota, Long, Belarus
New Idea, Hesston,
Bush Hog And Bandit Chippers

MARSHALL MACHINERY, INC.

Rt 652, Midway Between Indian Orchard and Beach Lake. Hours: 8-5 Mon.-Sat.
Honesdale, PA 18431 (717) 729-7117

WE SHIP PARTS
DAILY BY UPS.

PARTIAL LISTING

INDUSTRIAL

TRACTOR/LOADER/BACKHOES: Case 480, 580, AC 715C.
Kubota L4150 w/Cab 200 Hrs., 245; Cat 955 Crawler Loader,
Very Good Undercarriage; Arps Model 56, 3 Pt. Backhoe.
DOZERS: AC H3.
LOADERS: AC 640; AC 615 Massey 2135; JD: 350 Crawler Ldr.
440B Log Skidder; Pettibone B66 4WD Forklift; Ford Lane
Paver Model A-2; AC 600 Forklift; AC 345 Payloader w/Log
Fork And Bucket.
SKID STEERS: NH L775; NH L553; JD 375; Gehl 4610.

HAY AND FORAGE

RAKES: 256 & 258 Side Rakes; JD 660 w/Dolly Wheels. NI
Rakes; Fahr Four Star Centepede Tedders; New Tonutti PTO Trail-
er Rotary Hay Rakes, 9' Or 11'8"; New Deutz Fahr KS2.60 Dual
Rotary Rake w/Hyd. Fold For Easy Transport- 19 1/2 Ft. Working
Width; Vicon 3 Pt. Tedder Rake.
NI 406 9 1/2 Ft. w/Dolly Wheels; Hesston Discbine Reconditioned
Cuts 9'6".
HAYBINES: NH: 469, 472, 489. HESSTON: 1070, 1071, 1090,
1014 Hyd. Swing. NEW IDEA: 270, 272 Cut/Dittoners.
ROUND BALERS: JD 410, NI 483 & 484. SQUARE BALERS:
JD 336; NH 68 & 320. SQUARE BALERS w/KICKERS: NH-273,
JD 337.
FORAGE HARVESTORS: HESSTON: 2000-100, 7020 w/Your
Choice Of Heads, 7140; NH Super 717.
LARGE SELECTION OF PICK UP AND CORN HEADS -
CALL FOR YOUR NEEDS.
GRINDERS/MIXERS: Artway 425A; Gehl 100 Hyd. Drive w/
Scale.
JD 3300 Combine w/13' Grain Head.
Gleaner K Combine w/10 Ft. Grain Head.
CHOPPERS: NH 36 Flail Chopper; JD 15A Flail Chopper; FOR-
AGE BLOWERS: NI: 620, 622. GEHL 1580 Blower.
10'x24' Tandem Axle Hyd. Dumping Round Bale Hauling Trailer.
WHITE TOP HARVESTOR SILO, 20x32 w/Unloader, Torn Down
Ready To Load, Delivery Available.

TILLAGE EQUIPMENT

Tandem Discs: IHC: 350 Smoothing 14 Ft.; 37 Smoothing 14 Ft.
WHITE: 13 Ft. BUSH HOG: 12 Ft.; 14 Ft. Plowing; 13 Ft.
Smoothing. MASSEY FERGUSON: 10 Ft. Leveling; 12 Ft.
Smoothing. KEWANEE: 800 Super Flex 14 Ft.; 13 Ft. Rock
Flex. JD: RWA 13 Ft. Smoothing; BWA 12 Ft. Smoothing.
OFFSET PLOWING DISCS:
BUSH HOG: 12 Ft. Reconditioned; 9 1/2 Ft. Heavy Duty. MILL-
ER: 11 Ft. 3 Bar; 14 Ft. KEWANEE: 12 Ft. Demo. ATHENS:
11 Ft. Tandem.
PLOWS:
JD 3 PTH Chisel Plows; JD 2600 Auto Reset; IHC: On-Land Hitch
710 6X; 720 8X; 735 Variable 5X. 7-14 Shank 3 Pt. Chisel
Plows.
BRILLION: 16 Ft. And 18 Ft. (Danish Tine) Spring Tooth
Harrows.

Long Nu-Way, Model 1560, Traveler-Type
Irrigation System, Total Coverage Is
270'x2700', 350 GPM

TRACTORS

AC: 7040 Powershift; 7010 w/Cab, PS; 6080 w/ROPS & Sunroof;
6060; 5040 w/Ldr.; 190XT Diesel; 180 Diesel; 170G; D12; D10
w/Woods L159 Mower.
BOLENS: 224 4WD Tractor w/Ldr.
DEUTZ: 7085 w/Cab 2WD; DX90 4WD.
FORD: 6700 w/Ldr.; 4000 w/Ldr.; 3000, 2600 w/Boom Sickle Bar
Mower; 601. IHC: 234, 4WD w/Belly Mower; IHC 686; 140 w/
Cultivator; Ferguson 20 w/Front End Loader.
FARMALL: M. MF: 50. CASE: 1175. JD: 70 Dal. Standard. KUBO-
TA: B5100 E w/Ldr.; B8200 w/Mower; 3750 TLB; B8200
4WD w/Front End Loader; Oliver 55 Dal.; Long 610 4WD w/
Ldr.; Same Satumo 80.
HI CLEARANCE: Farmall Super A, 140; Int. 504.

SPECIAL

Case 310E Crawler/Loader
w/Ripper
\$3465.00

TINKERER'S ROW: JD 350 Dozer; AC D15; AC B; AC 175;
Ferguson 20; Farmall H; Ford 8000; JD 2020 Diesel; Haybuster
No-Till Drill; AC D15 3 Pt. Cultivator & Side Dresser.

MANURE EQUIPMENT

LIQUID: Hawkbilt 3220 Gal.; Hedlund Martin 2900 Gal. And
2400 Gal.; Betterbilt 1500 Gal.; Clay Honey Wagon- Vacuum;
Leftover Wic 2100 Gal. Tandem Axle Liquid Spreader- Dis-
count Price.
New Ford NH 306 Side Slinger Manure Spreader, Tandem Axle; NI
3632 Tandem Spreader- Sharp; Knight 716 Side Spreader.
Several NI And NH Box Spreader, Various Sizes. BARREL
SPREADERS: NH 663.

PLANTING EQUIPMENT

Brillion 3 Pt. Sure-Stand Seeder; JD 8250 Disc Grain Drill, Like
New; AC 2-4-6- Row Corn Planters; JD 2 Row 3 PTH Corn
Planters; Int. 250A Trailer Corn Planter; Lilliston No-Till Seed-
er; Brillion 10 Ft. Cultimulcher; JD 2 Row Tool Bar Corn Plant-
er 3 Pt.; Cole Powell Multiplex Planters.

MISCELLANEOUS EQUIPMENT

TRAILERS: Int. 7 Ton Centreville 9 Ton; Belshe Dual Axle Trail-
er; 20 Ton Tag Along w/Air Brake; 48 Ft. Move All Tandem
Axle Hyd. Equipment Trailer.
SPRAYERS: Myers 100 Gal. 3 Pth.; JD 535 Trailer Sprayer.
Assorted Trailer And 3 Pth. Sprayers. BCI 300 Gal. Sprayer
Tank On Trailer; Century 300 Gal. Sprayer On Trailer. Rotomist
100G Air Sprayer.
FEEDER WAGONS: Knoedler Feeder Wagon; Knoedler Dial-A-
Mix Wagon; E-Z Flow 220 w/Grain Wagon; Kilbros 250 Grain
Wagon.
TMR MIXER WAGON: Steiner SM165 w/Scale; Schuler 175B;
York Heavy Duty Pull Type Road Rake; Farmhand Tub Grin-
der; Case/IH 8610 Bale Processor; Hesston #10 Stack Hand And
#10 Stack Processor; Cardinal Auger Grain Elevator; Westfield
8x51 Ft. Grain Auger; Shaver 3 Pth. Post Pounder; JD 30 2 Row
Potato Digger; MC 3 Pth. Lawn Genie Pick Up Mower; Dittson
Rock Picker; Jobber Rock Windrower; Vermeer Trencher;
Agri-Metal Bedding Chopper; A&W 250 Hp. Dynamometer;
York Grader (Towable); Arps 728 3 Pt. Backhoe; Fransgard 3
Pt. Log Winch; Care Tree Spade; Used Cab For AC 190 Or 200.
LARGE SUPPLY OF FRONT END LOADERS AND CABS
FOR VARIOUS MAKES OF TRACTORS.