

**32 MISCELLANEOUS**

MEAT CUTTING BAND-SAW, \$323. Call 800-445-4669.

Meat Bandsaw \$975, 25Gal. Steam Kettle \$350; Gun Safe \$1500. (717)286-5306.

New Emglo 10HP Electric Duplex Air Compressor on a 120 gal tank, lists for \$4200 will sell for \$3200. New Pinnacle Refrigerant Recovery and Recycle Unit, lists for \$4800 will sell for \$1200. 1-800-228-8193 Box 23392.

PAYING TOP DOLLAR FOR ORIGINAL WIDE AT-TIC FLOORS. WE REMOVE. 717/229-2806.

R&S CLOCK REPAIR.... Call for estimate. Grandfather clocks a speciality. 717-65C-2740

**SAVE MONEY ON WOODWORKING MACHINES!**

Band saws, jointers, planers, routers, scroll saws, drill presses, table saws, sanders, lathes, shapers, dust collectors & more in stock. 30 Day Free Trial! 1 Year Warranty. Call For Low Prices. 1-800-445-4669. Terre Hill, Pa

WANTED: 56 ML glass milk bottles. Call Pen-Col Farms 717/458-6636 between 8AM and 5PM.

WANTED: Used tools and machinery Buy, Sell, Trade, Consign or Finder. BJ TOOL & SUPPLY, RT 422W, Myerstown, PA. 1-800-772-9845.

WellxTrol 50Gal. Tank&1HP Myers Deep Well Pump 110or220. \$300. (215)285-2611.

White Kalamazoo cook stove, shelf, heavy lids, no reservoir, \$125. 717-367-3674

**PAINTED STEEL ROOFING & SIDING**

- Galvanized/Galvalume
- 29/26 Gauge
- 3 Major Brands Available
- Large Stock Trim & Sheet
- 5V Crimp Metal

**AS LOW AS \$32<sup>00</sup> per/sq.**

**Conestoga Building Supply**  
New Holland, PA 17857  
717-354-2613 or  
1-800-544-9464

**33 RECREATIONAL VEHICLES**

1974 5th wheel travel trailer, 31' Coachman Quinstar self-contained, full bath, 3 way ref. freezer, generator, extra freezer, 21' awning, good condition, insp. good until 3/94, \$4700. 215/967-1519.

30' Coachman Class A Motorhome, Auto Transmission, Awning, Dual Air, 6.5 KBA Generator, Microwave, Crank Up Antenna, CB, Cassette, Etc. Nice and Clean, New Radials on Front, 77K Miles \$13,500. (215)942-2271

For Sale: 19' Starcraft Boat, Motor and Trailer. Runs Good \$1000 OBO. Call (717)738-1194.

**34 AUTOS**

1922 Model T Ford Touring, 1966 Mustang convertible. Both good condition, show quality 814/643-4672 after 5pm.

197 Olds Delta 88 Royale Brougham sedan, full power, excellent condition, must see. 717-687-0680 Lancaster.

**35 TRUCKS & TRAILERS**

**'92 GMC 3500**



**6.5 Turbo Diesel, AT, A/C, 12 Ft. Steel Bed, 27,000 Miles \$16,500<sup>00</sup>**

**SCHAEFFERSTOWN AUTO & TRUCK SALES**  
(Div. of Martin Hardware & Equip. Co.)  
Rt. 501 1/2 Mi. South of Schaefferstown, PA 717/949-2812  
Mon. & Wed. 8-5, Tues., Thurs., Fri. 8-8, Sat. 8-4

**R & R CAR AND TRUCK CENTER**



**84 IHC S1954 DT 466, 5&2 Spd., P/S, AB, 22' C&C, 32,800 GVW, New Insp., & Paint.**  
Call For Details

**'82 IHC SA1954, DT 466, 5 & 2 Spd., P/S, A/B, 22' Van With L/G, 34,500 GVW, Insp., Will Separate.**  
Call For Details



**85 FORD F700, 370 V8 Gas, 5&2 Spd., P/S, Hyd. Brakes, 28,000 GVW, 20' C&C, Low Low Miles.**  
Call For Details

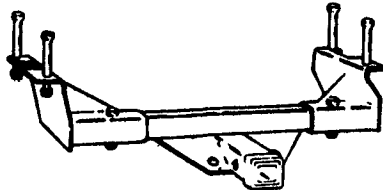
**CALL RAY LEED: (717) 560-4901**

1974 Autocar tri-axle, PT270, Jake brake, 6+1 on/off road Spicer, 18f, 44r, dual PS, DF, 12 ft.ca., 20" spokes, 75% rubber, clean for year, "A" title, \$8450. 717-626-9050.

1974 Ford C750 gas, 5x2 12' flatbed; 1979 Landoll equipment trailer, 40' tilt and wench overwidth extensions. Both very good. \$17,500. Symonds Ford Service, Woodhull, NY 14898. 607/458-5200.

**SEE US FOR YOUR BOLT ON RECEIVER HITCHES**

Heavy Duty Class 4  
10,000 LB. MTGW  
1,000 Lb. Tongue Wt.  
W/WT Distributing



**ALSO SEE US for your Axle parts & complete assemblies 2,000 - 22,500 LB. Axles & Suspensions Metal Trailer Components Lights & Electrical supplies Brakes, Tires & Wheels Jacks, Couplers & Hitches Hardwood Accessories & much more**  
Buy Where the Quality is #1 at the right price

Ask For Dean At:

**BINKLEY & HURST BROS. INC.**

133 Rothsville Station Rd. • Lititz, PA 17543  
717-626-4705

**HOSTETLER INVENTORY REDUCTION SALE**

**USED TRUCKS**

- 1974 Ford F-750, PS, 5 & 2 Speed, Air Brakes, 25,000# GVW, Will Take A 16' Grain Dump.....\$2,495
- 1978 International, Fiberglass Front, Gas, PS, 5&2 Speed, 26,500# GVW, Low Miles-Very Clean, Will Make Excellent 16' Dump.....\$2,795
- 1978 GMC Light Tandem, 40,000# GVW, Gas, PS, 5&2 Speed, Air Brakes, Government Surplus, 22,372 Miles, Fresh Paint, Just Right for 16' Silage Body.....\$5,250
- 1982 Dodge 3/4 Ton Pickup, V8 Gas, PS, Auto, With Hostetler Heavy Duty Experimental Pick Up Replacement Body, New Med. Blue Paint, Call For Photo.....\$1,895
- 9' Knaphelde Service Body with Enclosed Roof, Special Work Platform on Roof With Extendable Outrigger Scaffold For High Work, Will Fit 1 Ton Dual Wheel or Larger Truck, Call For Photos.....\$4,500
- New 16' Aluminum Grain Body, 48" High Sides, Dump Thru Gate.....\$4,995
- Used 10' Steel Dump Body With Subframe Holst, Great Shape for Medium Duty Truck.....\$1,895

**Much More In Stock Just Call**

**TRAILERS**

- Used 2 Horse King Bumper Pull, Tack And Manger.....\$995
- Used 6'x18' Moritz Bumper Pull Livestock Trailer.....\$2,495
- 8'x14' Hostetler Flat Bed Deck Over Trailer, 10,000# GVW.....\$1,995
- New Kiefer-Built 16' Steel Bumper Pull Livestock Trailers Starting At.....\$3,295
- New 7'x16' Deluxe Aluminum Bumper Pull Livestock Trailer, No Better Trailer Built For This Price.....\$6,850
- 10,000# Skid Loader Trailer, Electric Brakes, 14' Deck.....\$2,195
- 8'x18' 10,000# Deck Over Trailer, 2' Dove Tail, 5' Ramps.....\$2,995
- 7000# GVW Dump Trailers, 6'x10' Bed, 24" Removable Side, Electric Hydraulic Holst.....\$2,995

**Much More In Stock**



**Hostetler Truck Bodies & Trailers**  
Rt. 322 Milroy, PA 17063  
(717) 667-3921

**We've Now Moved To A Bigger & Better Location Full Line Ford Cars, Ford Trucks, Lincolns, Mercurys, Jeeps, Eagles**

**YES!! ENGLE-RISSINGER AUTO GROUP DOES MAKE IT EASIER!!**

Over 300 New & Used Trucks, Vans & 4x4's

- 1990 F-350 Dually Crew Cab, NLE, AC, V8, AOD, Loaded
- 1988 F-350 4x4 Crew Cab, NLE, V8, AOD, AC, Power Equipment Group & More
- 1992 Jeep Cherokee Laredo, AOD, 4 Dr, Power Equipment Group, Cruise, & Tire
- 1984 Jeep CJ-7 Hardtop, 6 Cyl, 2 Spd, Only 81,000 Miles
- 1991 GMC S-15 Sierra SE, V6, AOD, AC, 22,000 Mile
- 1992 Ford F150 NLE, V8, AOD, AC
- 1991 Bronco NLE, AOD, AC, 23K miles
- 1990 Ford F-450, 16' bed dump truck, 4 spd, white, dual air, K&M
- 1988 Ford F150 Super Duty, NLE, V8, AOD, AC
- 1993 Jeep Wrangler, 4 door, 2 spd, PS, brakes, skid plate
- 1991 Jeep Cherokee, 2 door, 4 spd, AOD, AC
- 1984 Jeep Grand Wagoneer, 4 spd, V8, AC
- 1991 Ford F350 15' Bed, 2 spd, V8, AOD, AC
- 1989 Ford F250 4x2, 16' bed, 2 spd, V8, AC, Heavy Duty
- 1990 Chevy 3500 Cap, V8, 2 spd, PS, AC, V8, 8 Spd
- 1989 Ranger NLE, V6, 4 spd, PS, AC, Blue & Silver

**ENGLE-RISSINGER AUTO GROUP**

Rt. 147 Just North of Hallifax  
Hallifax, PA 17033  
The Deals On Us...  
717-867-1111



**1985 INTERNATIONAL, \$2500, 350 Cummins, 9 Speed, RA472 Rears, PS, AC, One Owner, New Paint, Very Clean \$15,900**



**10' DUMP BODY, 28" Sides, 38" Ends, Half Cab Shield, 5/16" Floor, Coal Chute \$1,250**



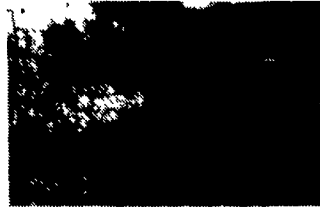
**(3) 1984-1985, GMC BRIG. SA, TT, 6V92T Silver, 9 Speed, 23K Rears on Spokes, PS, Your Choice \$7,500 ea.**



**1983 MACK U685ST, 300 Max, 5 Speed, 38 Mack Rears, PS, 24.5 Radials, Good Buy At \$10,900**



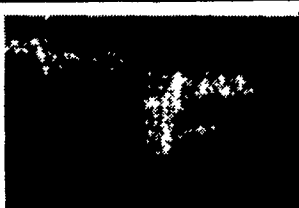
**1980 INTERNATIONAL 2275, SA, TT, 6-71 Detroit, RT1110 Trans., 23,000 Rear, PS, 22.5 Radials, Cheap Horse \$6,900**



**40' FRUEHAUF FLAT with tarp, Good Condition, Good Inexpensive Trailer \$1,750**



**1986 FREIGHTLINER TT 3406B, 350 HP, RT12609, DS381, PS, 22.5 Low Profiles, Runs Well \$7,900**



**USED OIL TANKS, 2000, 2500, and 3000 Gallon Capacity, steel, Priced From \$350 to \$850**



**1984 GMC BRIG TT, 6V92T Silver, 9 Speed, SQ100 Rears, PS, 22.5 Radials, Great Runner, Some Cab Rust \$5,900**



**1979 INTERNATIONAL TT, 290 BC Cummins, 9 Speed, 38 Rears on 4 Spring, 22.5 Radials, PS, Lots of Miles Left \$5,900**



**(17) USED VAN BODIES From 11' to 24', Some Insulated, Priced From \$300 to \$1500**



**1978 INTERNATIONAL SA, TT, 290 BC Cummins, RT910, RA57 Rear, 10.00 R 20 on Spokes, Very Low Mileage and Very Clean \$7,900**

**FIRESTONE MOTORS, INC.**

330 S. THIRD ST. • LEMOYNE, PA 17043 • (717) 763-7721