

# Top Pennsylvania DHIA

Lancaster Farming, Saturday, August 21, 1993-C5

(Continued from Page C4)

JAMES + JANET HUNTER	27.9	23791	807	3.4	752	3.2
BLACK POND FARMS	91.4	23546	943	4.0	740	3.1
DAVID M NAUGLE	19.3	22608	863	3.8	715	3.2
A & B DAIRY FARM	73.7	22627	825	3.6	699	3.1
RICHARD L BLACK	64.7	22268	878	3.9	690	3.1
STANHOPE FARMS	47.2	22101	832	3.8	689	3.1
MARK + CHRIS CORNWELL	38.2	22120	747	3.4	688	3.1
ALAN + RHONA CUSTEAD	81.9	20854	735	3.5	681	3.3
VEL+RUS HOLSTEINS	43.1	22135	778	3.5	678	3.1
DENNIS B HALPAST	45.8	21839	814	3.7	678	3.1
O-DARLAN FARM	43.4	21637	828	3.8	677	3.1

## CUMBERLAND

STEVE + MARY REESE	31.6	23345	810	3.5	749	3.2
M THOMAS SHEAFFER	61.9	22841	850	3.7	743	3.3
CURTIS + ANN DAY	53.9	23488	883	3.8	732	3.1
J PAUL STROCK	112.0	23263	863	3.7	732	3.1
GLENN NEWSWANGER	83.0	21883	795	3.6	702	3.2
HAROLD E MYERS	63.6	21705	795	3.7	701	3.2
GLENN W MYERS	59.4	22675	759	3.3	699	3.1
AL HART HOLSTEINS	57.4	21993	747	3.4	696	3.2
HIGHLAND VUE FARMS	68.0	20924	802	3.8	694	3.3
DONALD A MCCULLOUGH	105.7	21416	837	3.9	687	3.2
MARK A NAUGLE	56.6	21280	800	3.8	675	3.2
DAVID E GETTLE	45.8	20747	818	3.9	669	3.2
FRED B MC GILLVRAV	58.0	21173	702	3.3	667	3.1
HARRY E THOMPSON	48.3	20571	785	3.8	665	3.2
LONNI A WICKARD	45.9	20777	728	3.5	660	3.2

## DAUPHIN

MY-FAVORITE HOLS	53.9	24486	802	3.3	764	3.1
CATALPA FARMS	136.8	23081	818	3.5	734	3.2
CRISSINGER DAIRY FRM	88.9	22619	738	3.3	730	3.2
RESTFUL ACRES	119.6	22247	843	3.8	695	3.1
ALWINE FARMS	78.8	21259	823	3.9	686	3.2
TOBY T FARM	58.0	22156	801	3.6	674	3.0
IRVIN G MARTIN	43.5	21570	774	3.6	669	3.1
ELWILLO FARMS	189.9	21171	760	3.6	659	3.1
JOHN HERTZLER	70.8	20124	752	3.7	653	3.2
GREAT VIEW FARM	41.4	20064	735	3.7	651	3.2
MAHLON L LEHMAN	69.3	20183	720	3.6	650	3.2
STANLEY R LONG	130.7	20593	750	3.6	649	3.1
DELMAR+ SUSAN WEAVER	73.0	20884	774	3.7	643	3.1
DALE F FAUST	54.7	19492	647	3.3	638	3.3
PLEASANT HILL FARMS	76.0	20426	757	3.7	638	3.1

## ELK

PAUL SWANSON	28.6	18835	720	3.8	604	3.2
V BELL FARMS	64.4	18522	695	3.8	584	3.2
RONALD BUERK	25.5	16452	625	3.8	535	3.3
TIMBERS EDGE	21.3	13296	622	4.7	521	3.9
FRED W GREGORY	37.9	15811	572	3.6	497	3.1

## ERIE

CONCORD RIDGE FARM	128.4	23038	902	3.9	744	3.2
--------------------	-------	-------	-----	-----	-----	-----

HOW RICH FARMS	68.8	23101	872	3.8	734	3.2
RONALD L CHAPMAN	40.9	23380	873	3.7	727	3.1
PAUL AND MATT SENITA	51.4	22127	876	4.0	718	3.2
BERNARD H ESTER	33.7	22495	798	3.5	691	3.1
FRANK POLLOCK JR	27.4	22808	838	3.7	688	3.0
WOODS DAIRY	78.6	21655	789	3.6	667	3.1
LIND FARM	57.3	20935	753	3.6	659	3.1
BISBEE FARM	209.4	19994	705	3.5	653	3.3
RICHARD GLEMONT	34.3	21237	785	3.7	652	3.1
PAT PIFER	75.3	20768	750	3.6	650	3.1
CRAIG SHINKO	56.8	21062	763	3.6	649	3.1
RALPH GILKINSON	35.8	20880	778	3.7	648	3.1
GREENE SUMMIT FARM	40.1	20230	731	3.6	643	3.2
RIDGE-VIEW FARM	21.9	20478	694	3.4	637	3.1

## FAYETTE

ORR FARMS	110.9	21600	749	3.5	685	3.2
EDWARD BURNWORTH	58.6	19677	696	3.5	662	3.4
ROBERT JACKSON	97.8	20512	730	3.6	647	3.2
JACKSON FARMS	142.8	20209	654	3.2	645	3.2
RALPH HAY	40.4	20416	700	3.4	634	3.1
HERRING FARMS	82.6	19057	756	4.0	621	3.3
LOIS J MARIETTA	29.4	18664	672	3.6	616	3.3
R BROWN STONE-RIDGE	56.6	19173	660	3.4	614	3.2
ALBERT J FERENS	102.7	20209	748	3.7	612	3.0
ALVIN DIAMOND	97.2	18914	654	3.5	597	3.2
KAMP FARMS	88.2	19070	704	3.7	596	3.1
ALLEN HILL DAIRY	62.2	18143	678	3.7	581	3.2
STEVE KOOSER	51.2	17584	605	3.4	571	3.2
JAMES G POORBAUGH	113.4	18362	661	3.6	563	3.1
GARY THOMAS	41.0	15776	598	3.8	509	3.2

## FRANKLIN

RV + SV HOLLENSHEAD	144.0	26572	1048	3.9	853	3.2
DOUG-BARB MC CULLOH	107.3	23348	737	3.2	757	3.2
HORSTDALE FARM	95.3	23197	839	3.6	726	3.1
ROBERT E HARWOOD	111.4	23423	868	3.7	726	3.1
MIKE FLANNERY	74.0	22600	768	3.4	723	3.2
DALE WADEL	96.4	21243	808	3.8	696	3.3
ROHART FARMS	173.4	21400	756	3.5	691	3.2
OAKLEIGH FARMS	124.3	21100	824	3.9	687	3.3
REICH SPRING FARM	54.2	21708	706	3.3	682	3.1
STONE HART FARM	115.0	21372	724	3.4	679	3.2
JAMESWINA BURDETTE	60.7	20509	786	3.8	674	3.3
CULBERTSON GREEN FM	126.7	21798	735	3.4	673	3.1
ALDUS EBY	108.4	21068	768	3.6	667	3.2
EDWIN W SHANK	53.0	19967	694	3.5	665	3.3

## FULTON

KIN DU FARM	106.1	21503	801	3.7	694	3.2
J DALE FISCHER	110.9	21495	788	3.7	675	3.1
PIGEBON COVE FARM	116.5	20259	768	3.8	667	3.3
DUVALL BROS	79.7	20679	721	3.5	651	3.1
LYNN + JULIE KNEPPER	58.4	20298	695	3.4	647	3.2
JAN P COWAN	60.5	19704	728	3.7	641	3.3

HAROLD+HELEN DESHONG	76.3	19649	650	3.3	627	3.2
PURNDALE FARM	60.5	19488	704	3.6	619	3.2
RICHARD G BARD	49.7	18932	712	3.8	619	3.3
C & S DAIRY	68.7	18876	677	3.6	615	3.3
FISCHERSIDDLINGHILLFM	70.2	19876	666	3.4	614	3.1
PINETREE I FARM	84.6	19109	681	3.6	608	3.2
WARREN SMOPE	105.0	18719	662	3.5	608	3.2
CREEK VALLEY FARMS	21.8	18323	677	3.7	606	3.3
RICHARD MOSEMAN	67.5	18751	664	3.5	583	3.1

## HUNTINGDON

TANNERY ROAD FARM	91.6	23845	849	3.6	747	3.1
GEARY E SHADE & SONS	95.5	22014	800	3.6	726	3.3
SAMUEL K BYLER	54.3	22118	822	3.7	712	3.2
LOCUST LANE FARM	139.4	22511	859	3.8	709	3.2
SANGREY FARMS	109.0	21774	784	3.6	706	3.2
GERALD & BERN MCMATH	69.9	21114	739	3.5	703	3.3
TIMOTHY R PEACHEY	92.7	21486	783	3.6	691	3.2
SAMUEL B+HAZELSYODER	70.7	21553	717	3.3	683	3.2
ED & SHARON PARSONS	58.9	20870	767	3.7	679	3.3
BROCKETT BROS FARM	105.6	21539	811	3.8	679	3.2
MOWRER FARMS	189.5	22104	765	3.5	672	3.0
TOM & SHARON SPICHER	57.4	20325	750	3.7	669	3.3
DALAND FARMS	134.9	20928	776	3.7	669	3.2
CARL C+CAROL BARNETT	80.2	20953	775	3.7	667	3.2
DEAN E WARNER	40.9	21225	750	3.5	664	3.1

## INDIANA

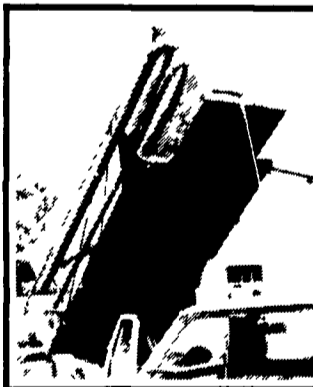
MILOS & SANDY SINAN	98.9	26287	951	3.6	803	3.1
GRIPFIELD FARMS	72.1	23818	874	3.7	765	3.2
PAUL & KAREN SHERRY	57.6	23789	912	3.8	736	3.1
PLEASANT VIEW FARM	118.8	23157	888	3.8	731	3.2
DALE & ROONEY BLOOM	125.9	21984	809	3.7	681	3.1
JERRY NESBIT	115.7	20768	777	3.7	676	3.3
NEAL DAIRY FARM	82.6	20764	731	3.5	668	3.2
ANDY+HOWARD CRAMER	35.8	21827	860	3.9	661	3.0
BLOSSOM HOLLOW FARM	44.9	19952	757	3.8	641	3.2
LARRY H MARSHALL	19.3	20669	811	3.9	640	3.1
ALAN G WHIR	35.4	20779	804	3.9	638	3.1
DONALD SHARP	42.4	19273	808	4.2	637	3.3
JIM & BILL COMPTON	58.5	19615	769	3.9	626	3.2
THOMAS D MC NUTT	105.4	19281	635	3.3	615	3.2
WEHRIG FARMS	92.5	17142	681	4.0	602	3.5

## JEFFERSON

LONDONDALE FARM	56.1	25037	931	3.7	803	3.2
BURK-LIN FARMS	33.9	25126	931	3.7	773	3.1
DONALD DIXON	41.5	22101	857	3.9	720	3.3
WAY-WIN VALLEY FARM	39.0	22467	827	3.7	712	3.2
LAUREL VALLEY DAIRY	44.5	21514	795	3.7	693	3.2
MITCHELLS DAIRY FARM	71.2	21973	838	3.8	670	3.0
VIVIAN FARMS	51.2	20849	744	3.6	649	3.1
HIGHLAND H FARMS	19.8	18869	764	4.0	649	3.4
WINDFALL RUN FARM	51.6	20243	753	3.7	648	3.2
REITZ HAVEN FARM	65.1	20507	765	3.7	648	3.2
GREGORY L KENNIS	24.1	21038	741	3.5	644	3.1

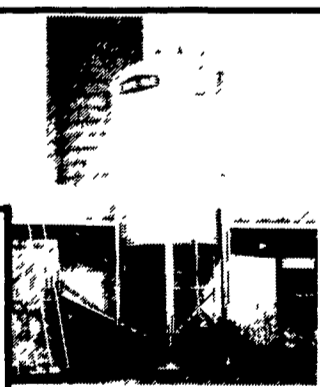
(Turn to Page D2)

# CHORE-TIME BINS AND AUGERS



Take 'em Down!

We Stock Truckloads  
Of Chore-Time Bins &  
Miles Of Chore-Time  
FLEX-AUGER.



Put 'em Up!



Bins...  
Large Or Small

Authorized  
Master  
Distributor



Custom Applications

We Will Assemble & Deliver  
Bins To Your Farm

Northeast  
agri  
systems

Northeast Agri Systems, Inc.

Flyway Business Park  
139A West Airport Road  
Lutz, PA 17543

Ph: (717) 569-2702

STORE HOURS Mon.-Fri 7:30 to 4:30  
Sat 8:00 to Noon  
24 Hr. 7 Day Repair Service

1-800-673-2580



FOR FREE ESTIMATES  
CALL OUR TOLL-FREE  
CUSTOMER  
SERVICE NUMBER:

1-800-673-2580

FRANK A.  
FILLIPPO, INC.  
- WANTED -

DISABLED & CRIPPLED  
COWS, BULLS & STEERS

Call: Frank Fillippo -  
Residence - 215-666-0725  
Steven Fillippo 215-666-7976

KEN CLUGSTON  
(717) 665-6775

CRAFT-BILT  
CONSTRUCTION INC.

FARM-HOME BUILDING  
1242 Breneman Road  
MANHEIM, PA 17545