

Public Auction Register

Closing Date Monday 5:00 P.M.
of each week's publication

SAT. AUG. 28 - 8:30AM, Bareville Fire Co. 18th Annual Public Auction Selling Groceries, Tools, Quilts, Furniture. Located At Bareville Fire Co., Between Leola And New Holland, Pa., At 211 E. Main St., Leola. Terms By, Bareville Fire Co. Local Aucts.

SAT. AUG. 28 - 9AM Smoketown Fire Co Consignment Sale Located Behind Zinn's Diner (Rt 272). Smoketown Fire Co., Smoketown Road, Denver, Pa 17517

SAT. AUG. 28 - 9AM Fall Inventory Reduction Trees & Shrubbery. Located 1 1/2 miles north of Rt 23 along Rt. 625 or from Reading south approx. 15 miles along Rt 625, East Earl Township, Lancaster Co. By Conestoga Nursery, Randal Kline, Lloyd Kreider, aucts.

SAT. AUG. 28 - 9AM 2 1/2 story brick dwelling, carriage house, real estate, antiques & household goods. Located at 301 S. Broad St., Litz, Lanc. Co., Pa. Terms By: Richard W. Tshudy, Horst, aucts.

SAT. AUG. 28 - 9AM, Farm Machinery, Irrigation & Hog Equipment, Antiques, Baskets, Fruit & Orchard Related Items. Located In Mt. Pleasant Mills, Snyder Co. At Selinsgrove Take Route 35 South 9 Miles To Crossroads. At Crossroads Make Left Onto Route 104, Travel South 1 Mile To Martin Brothers Produce And Make Left Travel 1 Mile To Auction Site At Whispering Pines Fruit Farm. Owner, Whispering Pines Fruit Farm. Roger A. Lauver, Aucts.

SAT. AUG. 28 - 9AM, Antiques, Tools, Personal Property. Located At 140 Washington Ave., Hershey, Pa. Palmyra/Hershey Area (2 Blocks Off Route 422). Auction For, Ralph Nye, Pennypacker-Andrews Auction Centre Inc

SAT. AUG. 28 - 9:30AM Antiques, collectibles, furniture, household goods Al Starr Fireman's Building, Willow St., Pa. Rt. 272 N. directly behind Willow Street Fire Hall For Gertrude H Steffe Est Miller & Siegrist, aucts.

SAT. AUG. 28 - 9:30AM, Real Estate, Household Items, Tractor, Tools, & Miscellaneous. Located Approx. 40 Miles North Of Harrisburg, Pa., 5 Miles South Of The Village Of Mt. Pleasant Mills. Turn East At The Covered Bridge Along Route 104, Go Approx. 7 Mile, Turn Right, Then 1 Mile To Dirt Lane On Right. Follow Sale Signs Off Route 104. Owner, Leona (Kerstetter) Heintzelman. Robert L. Leitzel & Tim L. Kline, Aucts.

SAT. AUG. 28 - 10AM Dairy Herd Dispersal at the James Movinsky farm located at the village of Spruce, Pa - 15 m. from Marion Center, turn off Rt. 119 onto Rt. 403S follow Rt. 403S to Clymer & take Rt. 296E to Rt. 240 E thru Cookport - follow signs or 3 m. West of (Sarmantown off Rt. 219 William Wolfgang, auct.

SAT. AUG. 28 - 10AM Tractors, wrecks, trucks, vehicles, equipment, tools. Rt. 50 Woodyard Rd, Willards, Md. Take US Rt. 50 East to Woodyard Rd., Williams Md. Turn left, Pete Richardson Auction Sales, Inc.

SAT., AUG. 28 - 10AM Real Estate and Personal Property located at 3520 Freemont St., Laureldale, Berks Co. Terms by: Estate of Joseph Nowa, Joanne Weber & Carol Emerich, Executrix.

SAT. AUG. 28 - 9AM Equipment auction. Teitsworth Auction Lot, Grove-land, NY. Roy Teitsworth, Inc., aucts.

SAT. AUG. 28 - 12Noon, Garland J. Sheppard Estate, 28 Acre Farm More Or Less. Located About 7 Miles North Of Anville On Rt. 934 And Turn Left At Harpers Tavern Onto Old Rt. 22, Follow Old Rt. 22 For About 2 1/2 Miles - See Property On Left. See Auction Signs. Conditions By, Donald Wallower, Executor Of The Garland J. Sheppard Estate. Nelson L. Ebersole, Auct.

SAT. AUG. 28 - 10AM From the home of Betty Callahan R3 Williamsport, Pa. Approx. 9 miles S. of Jersey Shore, PA Along Rt. 44 in the village of Colloms-ville. Owner Betty Calahan. Scott Younkin, auct.

SAT. AUG. 28 - 11AM 180 Hi-Grade cattle. Red Gate Farm, Hamilton, NY Located on Rt. 12-B 4 miles S. of Hamilton, N.Y. and 2 miles N. of Earlville, NY. Freeman and Carole Masker. Burton Auction Service.

PUBLIC AUCTION
MOWERS & MOWER PARTS
THURSDAY,
AUGUST 26, 1993



TIME: 5:00 P.M.
WEAVER'S LAWN & GARDEN
SANDBEACH ROAD
HUMMELSTOWN, PA.
MOVING - CLEANING OUT
INVENTORY

DIRECTIONS: From Harrisburg, Pa., going east on Rt. 22, turn right at the Porch Restaurant onto Sandbeach Road. Approx. 3 miles to sale, signs posted. - OR - From Hershey, Pa., going east on Hershey Park Drive, at the Hershey Nursery, turn left onto Sandbeach Road. Approx. 2 miles to sale, signs posted.

MOWERS & MOWER PARTS
Rotary and riding mowers, used mower engines, new and used mower decks, new and used rotary blades, reel mower sharpener, tubes & tires and tire chains for mowers, new belts & lights for mowers, new chain for chain saw, wooden shelving, and many other items not listed.

TERMS: Cash, approved checks, and no out of state checks. All merchandise may be inspected the day of the sale.

AUCTIONEERS:
Richard and Rick McNeal
Lic.#s AU-001380-L and
AU-002188-L
Phone 717-545-5911

TRACTORS - WRECKERS -
TRUCKS - VEHICLES -
EQUIPMENT - TOOLS
SAT., AUG. 28, 1993

Beginning At 10:00 AM
Rt. 50 - Woodyard Rd. - Willards, MD
DIRECTIONS - Take US Rt. 50 East to Woodyard Rd, Willards, MD. Turn Left.

FEATURING - 1924 CHEVROLET DELIVERY VAN, professionally restored, exc. cond.

COMBINES & TRACTORS - JD 6620 Combine, 2000 hrs., 2 WD, very good condition; 510 Massey Combine, 4 WD, 16' floating cutting bar, new unloading auger, 444 Intl Diesel w/Front End Loader; MF 165 Tractor; Allis Chalmers B w/4' Belly Mower, 20 HP, ex. cond; CA Allis Chalmers; 5' Woods Mower; Ford Jubilee 600; 2 Bucyrus Erie Excavators; Intl 154 w/60" Mower, scrape, wagon; International 915 Combine; Case 2290, 4 post, good tractor; Case 2090 Tractor; Massey Ferguson 65 Gas Tractor; International 1466 Tractor.

WRECKERS - 1979 Intl Tractor, single axle, 466 DT, 5x2 trans; 1985 Landoll Trailer, Hydraulic slide & tilt, 20,000 lb. capacity; 1981 Freightliner, twin screw w/Holmes 750 Hydraulic Wrecker Body, 13 speed, 350 Cummins Diesel; 1985 Intl S1600 w/20' Jerr Dan Steel Body Rollback, 6.9 Intl motor, 4 speed trans, 2 speed rear; 1978 Holmes 600 Wrecker w/C65 Chassis, 427 Gas Engine, 5x2 Trans, 2 speed rear; 1984 Chevrolet 1 Ton c-30 w/Jerr Dan Rollback, 350 Engine, 4 speed; Holmes Wrecker Body for 1 Ton Truck;

EQUIPMENT & MISC. - New Holland 316 Baler w/Bale Turner, Like New; JD 350 Bulldozer; Hahn Hi-Boy Sprayer, 312 series; Yale Forklift; Arps 3 pt. hitch Backhoe w/Hydraulic Legs; Long Backhoe; 3 pt. hitch; John Blue Sprayer, 400 gal. Stainless Steel tank w/400 Series pump, hydraulic on/off; Ferguson 9' Chisel Plow; Woods 4' Rotary Cutter; Westgo 6 row Cultivator; MF 520 Disc, 32 Blades; Semi-Mount Transplanter; Kemco Pot Planter for plastic; 20 ft. Tandem Axle Trailer; 19' Wooden Grain Body; Dry Fertilizer Unit for 6r, 7000 Planter; 65 gal. poly tank; Long Embry Bros Backhoe; Lorain Moto Crane; MF 468 Planter, 4 row; JD Grain Drill; 13' Disc; Scotty Travel Trailer; Front end Loader Bucket; 1 Ton Stake Body, All Steel; 4'x8' Utility Trailer; One, Two and Three Axle Trailers; Rotary Cutters; Land Boxes; Rakes; Scraper Blades; Hale Irrigation Pump. New Idea Pull Type 2 row Cob picker, 38" Rows; JD 8300 Grain Drill, Single Spout.

VEHICLES - Intl Dump; 1984 Ford Diesel Dump, 1 Ton; 1976 Ford LN900 Dump Truck; 1968 Autocar Tandem Dump, 230 Cummings; 1970 Autocar, Tandem Dump, 230 Cummings; 1980 White Road Boss, 1987 Heated Box, 6V92 Silver Detroit; 1983 F700 6 Wheel Dump, Detroit Diesel, 5x2, 70,000 miles; 1985 Chevrolet C-10 Van; 1984 Chev S10 pickup, V6, 5 Speed, 67,000 miles; 1985 Ford F150 Lariat Pickup, 4 WD, V-8, loaded, 55,000 miles; 1988 Chev. Van; 1979 Intl Bus; 1977 Intl Bus; 1979 GMC Crew Cab Utility Body Truck, 4 Speed, 350 engine; 1964 Ford F-600, 4 speed, split axle, 6 cylinder, 1961 Ford F-250; 1975 Hay Bus; 1989 Dodge Daytona, AU, AC, Loaded, 39,000 Miles; 1985 Cadillac Fleetwood, loaded, new engine; 1982 Cadillac Cimmarron, 4 Speed, AC, Sunroof, AM/FM radio, 33,300 Miles; 1984 Dodge Aries, 4 DR; 1985 Blazer S10, 4WD, 4 speed, AM/FM, Step Rails, HD Radiator, 82,000 Miles, MD Inspected; Historic 1966 AMC Marlin, 327/300, AU, 2 dr -fastback; 1974 MG, 4 speed convertible, new clutch; 1990 Freightliner, Conventional; 1979 Freightliner, cab over.

TOOLS & MISC - Drum Sander, Drafting Table; Snap On Tool Box; Harris Acetylin & Oxygen Torch Set w/Smith Cutter; Cyclon Chain Hoist; Wire; Large Assortment of Tools inc. Socket Sets, Wrenches, Screwdrivers and more; 14'x30' Office Trailer w/AC, Heat, Carpet, Electric; 16' Chaparral Boat, motor, trailer, all in working condition-needs motor lift; Truck Cap; JD 118 Pressure Washer; 5 HP 1200 lb. Power Washer; FMC Computer Wheel Balancer; 10 HP Air Compressor w/Rockford Trans; Aries Riding Mower w/bagger, 7 HP, 30" cut, 2 yrs. old; Cadet Mower; JD 110 Tractor, 38" cut; JD 111 Hydrostatic, 38" cut; Yard Pride 11, 36" cut; Toro 8, 32 Pro; Cub Cadet 122; JD 214, 46" cut; Snapper LT 16; Stainless Steel Band Saw; Wheel Pulley; Engine Stand; Drill; Engine Hoist; Single Axle Tow Trailer; 30 Ton Press, like new; Tow in gauge; Utility Cap for Pickup; 19 Ft. Renken Tri Hull, 120 HP I/O w/trailer; 19 Ft. Johnson I/O w/CB, depth finder on Cox EX Load Trailer; Aluminum Boat w/55 HP Johnson; Misc Boats & Motors; 2-304 Chevy Engines, 1 new block w/marine conversion & trans, 1 rebuilt block plus lots more.

NEW LUMBER - 20 rolls corrugated slotted drain pipe, 5"; approx. 100 Cypress Landscape Timbers; approx. 40 sheets of odd plywood; Quantity of Nails; Railroad Ties; Salt Treated Lumber, 2x4 - 10' to 16', 2x6 - 8' to 20', 2x6 - 22' fir.

CONSIGNMENTS STILL BE ACCEPTED
Terms - Cash or Good Check. THERE WILL BE A \$25.00 BUYER PREMIUM ON TITLED VEHICLES. Checks from the Delmarva Area will be accepted.

PETE RICHARDSON AUCTION SALES

P.O. Box 51 - Willards, MD 21874
(410) 548-2425 (410) 835-8613 FAX

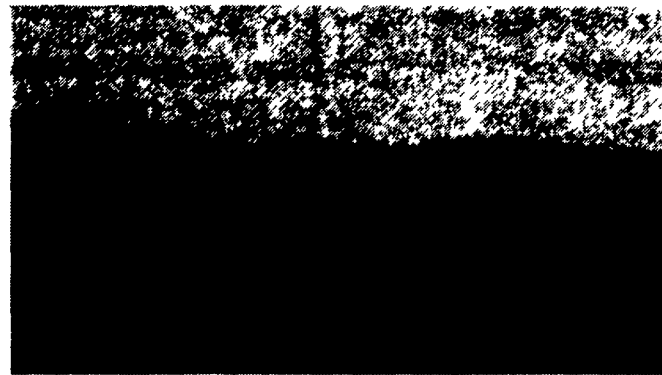
AUCTION
FARM MACHINERY, ETC.
SAT., SEPT. 4,
10:30 AM

181 Rittenhouse Rd., Upper Providence Twp. Montg. Co. 8 mi. east of Pottstown, 10 mi. w. of Norristown, 2 mi. east of Royersford, 2 mi. west of Trappe, Rittenhouse Rd. Intersects Township Line & Lewis Rds. Watch for signs.

4 Tractors-Ford 5000 Tractor & Loader, Ford 901 Tractor & Loader, International Farmall M & 350 2 J.D. 3 pt. hitch 3 bottom plows, 3 pt. hitch 4 bottom plow, 2 J.D. Grain drills, 1 row New Idea Corn picker, 30 ft. Hoover Elevator, Air Flight Elevator, 1 Case Side Delivery Rake, 9 ft. International Hay Bine, J.D. Baler, Hay Fluffer, International 2 row Corn Planter, 9 ft. J.D. Haybine, Spring Tooth Harrow, Lime & Fertilizer Drill, 2 Wheeled Rubber Tire Trailer, Cement Mixer, 3 pt. Hitch Field Sprayer, 5 ft. Rotary Mower, 2 Passenger Cart, Old Farm Wagon, Old Bob Sleigh w/large box, 2 seater Express Sleigh, 3 Rubber tire wagons, lots of ladders, Platform scale, Bag trucks, Ox Yoke, 2 Horse Walking Plows, 1 Horse Cultivators, 2 Grain Cradles, several gates, small tools & chains found around the farm, Cream Separator, Cider press, 6x10 portable bldg. Cast Iron Cook stove, 2 butter churns, anvil, harnesses, old hand implements, Pea & Beam scale, Old Cupboard, 2 elec. Lyon brooders, chicken crates, egg baskets, etc. Sale worthy of your attendance.

By Order of The Estate of
DAVID RITTENHOUSE
Clay C. Hess Assoc. Auct 409L
215-948-7127

MARJORIE VONSTEIN ESTATE AUCTION
REAL ESTATE, ANTIQUES & COLLECTIBLES, HOUSEHOLD ITEMS, TOOLS
13 Miles South of Everett, PA in Monroe Township, Bedford Co., on Route 26.
Saturday, Aug. 28 at 8:30 a.m.



APPROX 211
ACRE FARM

APPROX. 211
ACRE FARM

Real estate offered at 12 noon: Approximately 150 acre farm ground & balance in timberland & a large pond, 8-room brick cased house, 2 bathrooms, full basement; wrap-around porch, large tile bath on second floor, built-in kitchen, carpet on most floors, new vinyl windows, detached 28x24 2-car garage, bank barn & 4 other outbuildings, spring water, oil, wood & coal hot air heat. To be offered in 2 parcels & entirety. PARCEL #1: Approximately 136 acres, house, barn, garage, outbuildings & pond. PARCEL #2: 75 acres, no buildings. This property has to be seen to be appreciated. Easy farm to farm. Hard road frontage. Real estate shown by appointment.

Antiques & Collectibles: 2 washstands, 2 blind front corner cupboards, 3-leg Duncan Phyfe drop-leaf table & 6 chairs, 2 drysinks, pink depression glass, 12 place setting Bavaria (Germany), butter dishes, 8 kerosene lamps, (1 Rayco), washbowl & pitcher, cherry coffee end tables, hall tree, cherry desk, oak stand, flat irons, pressed back chairs, oak dressers, single poster bed, rocker, 1884 history book Bedford, Somerset & Fulton County, 2 chests of drawers - glass pulls, quilts - some are new, camel-back trunk, part of a spinning wheel, blanket chest, 2 oak high headboard beds, world wall map, old picture album, lantern, iron griddle, waffle iron, picture frames, New Haven mantel clock (not complete), crocks, butter bowl & print (plain), iron frog, doughtray, large bench, hickory rocker, 15-gal. crock, round pedestal table (rough), 2 kitchen cabinets (for parts), small wooden table, square oak table, milk can, copper wash boiler, copper kettle, cookstove w/warming closet, dressing table, school desk, steamer trunk, kerosene heater, lawn furniture, golf clubs & cart, iron kettle, hand planter, separator.

Coins: 24 silver dollars- 1880 & up, Buffalo V nickles, 16 penny albums, silver quarters, Liberty head half dollars- 1904 to 1915, Liberty standing half dollars - 1937 to 1942, Liberty head dimes - 1892 to 1916, Liberty head quarters - 1906 to 1916, Liberty head dimes - 1916 to 1945.

Household Items: Breakfast set - 6 chairs, dishes, pots & pans, gas stove, microwave, electric appliances, Kenmore side-by-side refrigerator w/ice maker, metal bed, Sears Coldspot upright freezer, folding bed, 8 place setting silverware, stereo, living room suite, card table, table model RCA color TV, fans, Maytag wringer washer, 2 recliners, hide-away bed, calculator, Eureka & Kirby sweeper w/shampooer, linens, 2 metal file cabinets, 4-pc. bedroom suite, kerosene heater, wheel-chair, mirror, swing, Whirlpool auto. washer, Whirlpool dryer.

Tools & Equipment: Nice 1983 Chevrolet Caprice Classic 4-door, John Deere 140 lawn tractor, lawn dump trailer, Montgomery Ward 8 hp roto-tiller, Troy-Bilt roto-tiller, electric weed-eater, anvil, vise, stepladder, extension ladder, 14' flat-bed wagon, hand truck, wheelbarrow, corn sheller, lawn & garden tools, 1972 Jeep Wagoneer, battery charger, hammers, sockets, cultivator for 140 John Deere, shop vac.

TERMS: Real estate, 10% down day of sale, balance on delivery of deed; personal property, cash or good check. No out of state checks. Not responsible for accidents.

Lunch
Executrixes: Reba Barkman (814) 652-5912
Jessie Diehl, (814) 652-2473
Auctioneers: Robert Grubb & Sons, AU-001294L, (814) 652-2547