

75 GMC 21,000 GVW 12' flat bed dump truck, has almost new V8 350 engine, 4 speed trans. with 2 speed axle & trailer hook \$2,500. 717-532-4882.

Yale 2 ton ind. chain block, VG \$75. 9 foot Meyers snow plow blade only V-good \$200. 250 cubic inch body. Chev truck motor \$100. Schuykill Co. 717-386-3143.

Alpine milkers, bucks and kids Also few small cheese presses. Lanc. Co. 717-299-2272.

79 Chev pickup original owner 62K miles 350 V8 with 650 Holley & Headers first \$1,000. Balto. Co. 410-374-9750.

Electric hot dog rolla-grill, perfect cond. cast \$975 will sell for \$350 prepaid insured UPS Steuben Co. 607-962-1403.

Five horse power universal milker pump with Chore Boy oil recover. also five hundred gallon ice bank, bulk tank. 717-523-3715.

Farmall F-12 manifold and carburetor, transmission rearend with wheels and splitters, motor; 2-40" high center rims, 74 Plymouth Scamp, ex. \$400. Franklin Co. 717-263-8652.

Athens 7 tooth 3 bar chisel plow \$950. Rye combine run \$3.50 bushel 8' alum. truck cap. Perry Co. 717-789-3979.

1150 Int. grinder miser, Int. 101 cvcombine, Weaverline 224 feed cart. Juniata Co. 717-589-3570.

Tandem axles, springs, hangers, etc. fro Strick reefer trailer, if interested call 215-584-4869 Montg. Co

Wisc. Robin engine new model WI-3409 HP 1" shaft \$425. Sold for \$799. Sussex Co. NJ 201-875-1597 call 5-9 pm

Girls white bedroom set, canopy bed, bureau, desk. Good Cond. \$200 OBO. Montg. Co. 215-287-5370 after 5.

77 Ford pickup good motor, clutch needs attention - best offer. York Co. 717-235-3197 after 3:30 p.m.

Browning compound bow 45-70 lb. arrow rest, pin sights, quiver, stabilizer \$95. Lanc. Co. 717-733-6697 5-9 PM

12x16 storage barn \$450. Honda welder generator \$950. Abner A. Zook, 405 Cains Rd., Gap, Pa. 17527. Lanc. Co. 717-442-8336.

Rambouillet ram lamb born Mar. '93 sale or swap \$50 or rambouillet or columbia ewe Harford Co. 410-877-3524.

Onelda royal oil fired furnace 160,000 BTU \$400. 275 gal. tank \$50. Leb. Co. 717-865-7125.

Snapper riding mower, good working cond. 8 HP Briggs & Stratton motor, 30" blade \$350. Berks Co. 215-693-5624.

3 augers 4"x30", also 12"x12" 6 ton bulk bin, good reduction motor, slant board chicken house feeder system, make a deal. Leb. Co. 717-865-0304.

Backhoe JD 300 gas good cond. \$5500 or best offer. York Co. after 7 p.m. 717-993-3350.

1975 Ford flat bed truck 30,000 GVW 22 foot steel bed, great cond. 3208 Cat 5 speed trans. Adams Co. 717-677-7207.

Brilliant cultipacker 10' \$350. 700 pieces 9"x18" roofing slate. Lanc. Co. 717-653-1728.

1st place Merino fleece at Maryland sheep & wood festival 1993; offspring wool roving, merino yarn for sale. Black or white. Snyder Co. 717-539-2809.

62 Chevy 12 foot flatbed, runs good, needs work. Berks Co. 215-689-4269.

H-O 2 hole corn sheller, nice cond. \$120. Gravely reel mower \$45. York Co. 717-235-8166 eves.

Aged AQHA mare \$700. Paint breeding stock, 2 yr. stallion \$800. Nicely built, ex. bloodlines 717-665-2534 Lanc. Co. Also baby male chinchilla.

Rye seed cleaned and bagged \$5. per bu. can deliver also 6 heifers due Sept.-Nov. \$1150 ea. Lanc. Co. 717-285-4335.

New Idea 1 row corn picker \$750. Jonas Glick, 1211 Georgetown Rd., Christina, Pa. Lanc. Co.

Ox team, 2 years old, Pinzgauers, rare German-breed \$1,000. Bro. Jothannes, RD 1 Box 149, Pitman, Pa. 17964.

Motor home conv. bus (not a school bus) Cummins Pusher dual air awnings, 6.5 gen. too much to list clean \$20,000. Cumb. Co. 717-776-3305.

Ten laying hens amber cross water heater, feeders \$40. 14.2 GE no frost refrigerator, good cond. \$150. OBO. Lanc. Co. 717-284-3758.

Typewriter, battery operated, electronic built in spell check, special print styles, many automatic features, like new \$75. Lanc. Co. 717-354-4729.

1300 Ford 4x4, good 1365 Oliver 4x4 needs work, Wanted 650 IH harvester 215-682-6186.

Lacka 717-282-5080 Casement aluminum windows 3-36"x40" 4-42"x50" 1-30"x36" 2-17"x35" very good \$150 for all. John J. Savage, Plenk Rd, Jermyn, Pa. 18433.

Tractor restored 1977 Farmall Cub 5 ft. Woods mower, New Castle Co. 302-994-2936 after 6 p.m.

Tractor Wheel charger V8 8 HP Kohler 36" mower 40" snow blade weights \$530. Bucks Co. 215-757-6637.

Ridgid pipe threader model 141, 2 1/2"-4", new cond. \$300 OBO. Snapper commercial weed eater \$85. Cecil Co. Md. 410-658-3525.

Ford 660 WF gas tractor, 3 PH, Sauder loader, 2 buckets, JD 5 ft rotary mower, log chains All \$3500. York Co. 717-252-4713.

JD corn head 335, 3 row off JD 55 combine \$300 need unload auger for JD 55 combine. Chester Co. 215-274-8019.

Ford 2010 tractor with sickle bar hyd. forward and rev. John Dære #5 mower, Monroe Co 717-646-2163.

Irrigation pump 6" Rain Master with 671 Detroit diesel needs seals, low hours \$1900 OBO. Cecil Co. Eves. 410-398-4313.

Deere 712 conservatill disks, 11 chisels used less than 1,000 acres. Ex., must sell. 30 miles north Williamsport, Tioga Co. 717-324-2275.

Grove PTO chuckwagon, front & rear unloading, works well, \$900. NH Super 68 PTO baler w/wagon chute, very good cond. \$1475. Delivery? Carroll Co. 410-843-0711.

1970 Int. 1510 trk. 12' box, partial deck Midwest cover-all tarp, good feeder pig haul trk. 717-865-3155 Leb. Co.

For AC G two row corn planter plow, side dresser 3 inch irrigation system with pump. Chemung Co. 607-529-3430.

NH 460 haybine for parts as is \$125 OBO 410-357-4025 Balt. Co.

AKC German Shepherd pups 7 wks. old 8-24 all shots, wormed \$150. Eli Jay Esh, 244 Lynwood Rd., Ronks, PA 17572. Lanc. Co.

Overhead door 10x20 insulated, elec. opener like new \$1200 OBO. Other doors available. eves. 717-362-9850 Dauphin Co. Registered Horned Dorset Ewes \$35, Rams \$50. Wythe Co. 703-228-2862.

1986 S1700 Intern. truck diesel 24,500 GVW, 218 Wheelbase 900-20 tires, good cond. \$4800 or best offer. Berks Co. 215-679-2439.

Wic bedding chopper with 8 horsepower Honda engine, quick change knives, good cond. \$1200. Lanc. Co. 717-859-3456.

Well-bred Hamp ram lambs \$115. can be registered H. Showalter, Lanc. Co. 717-859-1094.

1938 Case for parts or restoration \$250. Burlington Co. NJ 609-298-2779.

1983 Chevy truck C70 cabin chassis 366 5 spd., 2 spd. rear \$3,000 OBO. Call 717-484-2250 Reinholds, Lanc. Co. Pa.

REg. N.J.B.H. Yearling fillies should mature 16H B/O or trade for quiet riding horse under 10 yrs. Hunterdon Co. 908-782-6162.

Belgian/Paint 9 yr. old sound ride drive work single or double \$1200. 6 ft. 3 pth disc \$350. Blue Heeler pups, Perry Co. 717-567-6039.

NH 880 Harvester, 2 row narrow corn, windrow pickup; 3-beater silage wagons; 3 Badger, 1-NI all fair cond. 3rd cut Alfalfa 35 acres. Cumb. Co. 717-258-6247.

Netherland dwarf and Holland lop breeders with pedigrees, many colors, incl. blue eyed white \$25. firm. Chester Co. 215-857-1693.

PVC plastic pellets, food grade, clear, 8 tons, steel beams, plank flooring, strap tools, supplies, large quantities, del. Co. 215-565-6038.

Farmall M, good cond. 6,000 tobacco lathe, two bale boxes, tobacco planter, 62 Chrysler hardtop. Lanc. Co. 717-336-6782.

Parker 20 ga. Trojan 28 inch barrels Mod + full \$1650. Winchester Model 12 vent rib - 12 ga. \$350. Cumberland Co. NJ 609-455-3902.

1992 Kawasaki KX500 motorcross, never raced, all original, low hours, owners manual, well maintained, very reliable. \$2300 OBO. Harrisburg 717-652-8676.

2 Hydraulic cylinders for Farmall H or M cultivator, 40 ft. wooden extension ladder, good cond. Hunterdon NJ 908-782-2878.

Thoroughbred mare 5 yrs. 14.3H quiet sensible trailers well green broke, riding or broodmare prospect, good bloodlines 1500 OBO. York Co. 717-235-5448.

Cadillac 1942 limousine mdl. 74 rung storage 20 grs, 1936 Packard storage 20 yrs. Cad \$5000. Packard \$5000. Might trade. Alleg. Co. 412-371-6206.

IH 203 combine, good working cond. \$1300 OBO. Two 1952 Studebaker pickups, one running \$900 for pair. Mon. Co. 908-591-8627.

New Holland potato digger with Wisconsin engine, good cond. \$975. 18 HP Stianzi diesel, good cond. \$600. John S. Stoltzfus, Jr. 838 White Oak Rd, Christiana, PA 17509.

Wurlitzer Organ and bench model 4300 deluxe \$400. Firm. Chester Co. 215-933-5306.

Large gun safe \$1500. Hobart meat bandsaw \$975. 25 gal. steam kettle \$350. 3 row veg. transplanter \$1500. Northumberland Co. 717-286-5306.

Old Maytag washer and Kenmore stove \$20 each. Ben Beiler, 1834 Windy Hill Rd, Lancaster, Pa. 17602. Lanc. Co.

PTO fan airplane propeller. Lanc. Co. 717-738-1291.

Holstein service age bulls, pressure treated electric fence, stacks .40 each. Franklin Co. 717-597-4494.

Pygmy goats, black with white ears, no papers. Frederick Co. Md. 301-662-3260.

Quantity of electrical equip., fuse boxes, magnetic startwrs, switches, bx and romex wire. Singel phase motors to 5 HP. Burglar alarms and related supplies. Delco 215-544-2424 7-to 9 AM PM.

Int. 881 forage harvester, three 960 forage wagons, two row corn head w/ tandem axles and roof, and pickup head. Good cond. Hampstead, Md. 410-374-2831.

JD Luc engine, 275.00. IH LB 1 1/2-2 1/2 HP 100. 2 Reo reel mowers with slanted motors. \$20 ea. Montg. Co. 215-672-6894.

Stauffer self unloading wagon 10 ton gears, Adj. tongue, silage, ear, corn, double web, field ready \$750. OBO. Lanc. Co. 717-656-6455.

NI 323 corn picker, good cond. Rye seed 4.25 bu. Lanc. Co. 717-664-4235.

International 560 diesel tractor, ex. cond. or steel. Amos S. Lapp, 68 Morrison Mill Rd., Kirkwood, PA 17536.

Registered Australian cattle dog puppies, ex. disposition, both parents working dos. \$75. 841 Kirkwood Pike, Quarryville, Pa. 17566. Lanc. Co.

5 new disk coulters, spring loaded 18 in. 2 used 20.00 each. York Co. 717-235-2032.

Farmall H tractor and JD 3800 chopper, both in good shape. York Co. 717-235-8125 eves.

Used tin channel drain, V crimp, corrugated 2 1/2 x 4 1/2 x 23' fir rails, hewn beams. Lloyd Horning, 781 Center Church Rd., East Earl, Pa. 17519.

AC-D-17 Ser. III w/plow mower PH digger \$3700. 12'XHD Taylorway disc, 28" discs, \$5500. AC 600 corn planter, offer, Harford Co. Md. 410-836-1722.

1970 Honda 750 23,000 miles, new rubber, nice, best offer. after 4:30 Lanc. Co. 717-872-7933.

F20 Farmall serial no. FA13077N good running cond, and tires, elec start, good paint 1175.00 York Co. 717-244-3415.

JD Manure spreader, No. 34 very good cond. York Co. 717-292-4855 or 292-9794.

McD corn binder loader, engine complete, ready for field. Lanc. Co. Jonas Stoltzfus 5549 Old Phila. Pike, Gap, Pa. 17527.

13 year old sorrel work horse, good worker, lots of snap, Gideon Z. Lapp, 87 Buck Heights Rd., Quarryville, Pa. 17566.

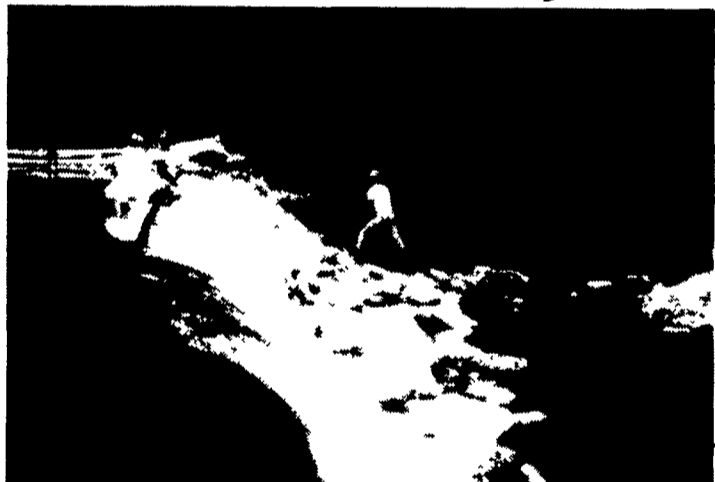
Sheared, sprayed and weed-free grown Scotch Pine trees, 6' to 9'. Wholesale. \$5/each

Also at negotiable price cut or dug White Pine, Douglas Fir and Blue Spruce

(717) 275-1250

HAVE A DAM OR SPILLWAY IN NEED OF REPAIR?

Let Us Come & Talk With You About **PRESSURE POINTING**



This Is YOUR ANSWER TO LOW COST REPAIR

- Stronger Than Repointing Methods
- Longer Life Span
- Fast & Economical Installation

So Please Give Us A



WE ARE THE REPAIR SPECIALISTS

- Stone Wall Repairs
- Installation & Maintenance of Concrete Bunker Silos
- Pre-Cast Gunitite Lined Water or Manure Storage Tanks
- Dam, Reservoir & Spillway Repair
- Slatted Floor Systems
- Silo Repairs

We're The "Concrete Specialists"

MAR-ALLEN CONCRETE PRODUCTS, INC.

Gunitite Construction • Precast Concrete Products
Bridge Repair • Tank Repair • Holding Tanks • Installation • Pre-Qualified by PennDot

20 Cocalico Creek Rd.
Ephrata, PA 17522
(717) 859-4921

Two Convenient Locations!

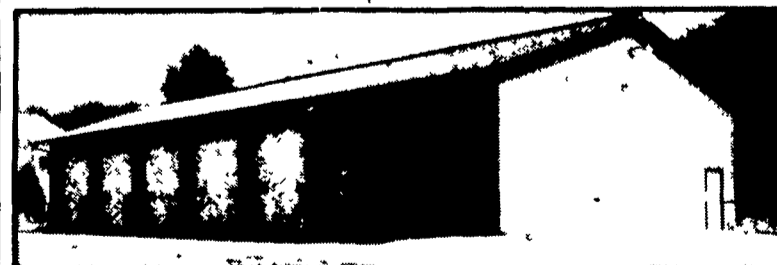
P.O. Box 337
Ebensburg, PA 15931
(814) 472-8690
Ask For Mike

Subsidiary of Seal-Crete Corp.

MORTON BUILDINGS

Since 1903

- Horse Barns
- Riding Arenas
- Garages
- Warehouses
- Offices
- Shops
- Equipment Storage
- Aircraft Hangars



MORTON BUILDINGS, INC.

Excellence — Since 1903

CONTACT:

3368 York Rd.
Gettysburg,
PA 17325
717/624-3331

P.O. Box 126,
Phillipsburg,
NJ 08865
908/454-7900

Call or write today for more information

1-800-447-7436

Illinois only, call 1-800-428-6686

CUSHION Hitches



750 RT

- ★ EZ Hookup
- ★ Fits 2" Receiver
- ★ Many Other Models
- ★ Cushioned Bumpers
- ★ Receiver Hitches
- ★ Ship UPS Daily
- ★ Free Catalog

1 (800) 932-8373

Weaver Distributing

RD #2 Box 470
Fredericksburg, PA 17028