

New England Shell Eggs

Wednesday, August 18, 1993
NEW ENGLAND: The market tone was steady as prices remained unchanged. Retail and distributive movement was mixed with seasonal shifts expected to switch demand from resort to urban areas. Supplies were usually sufficient to cover current needs.
PRICES PAID TO PRODUCERS, CASES EXCHANGED, GRADE YIELD BASIS, BROWN EGGS LOOSE, AT FARM, CENTS PER DOZEN RANGE JUMBO .88-.91, EXTRA LARGE .84-.87, LARGE .74-.77, MEDIUM .53-.56, SMALL .23-.26.
BOSTON: PRICES TO RETAILERS, SALES TO VOLUME BUYERS, USDA GRADE A AND GRADE A, BROWN EGGS IN CARTONS, DELIVERED STORE DOOR, CENTS PER DOZEN RANGE: GRADE 1.03-1.05, LARGE .93-.95, MEDIUM .72-.74.

Valley Stockyards

Athens, Pa.
 Monday, August 16, 1993
 Report supplied by auction
HOLSTEIN HEIFER CALVES TOP

205.00.
VEAL CALVES TO 100.00.
VEALER BULL CALVES TO 180.00.
SLAUGHTER CALVES 70.00 AND DOWN.
GRASSERS & FEEDERS 47.00-75.00.
LAMBS BABY TO 85.00, WOOL 50.00-65.00.
SHEEP 20.00-38.00.
HOGS 200-250 HEAVY TO 38.00.
SOWS 28.00-34.00.
BOARS 28.00-32.00.
PIGS EACH MEDIUM TO 19.00.
HEIFERS 50.00-57.00.
STEERS 55.00-66.50.
FEEDER STEERS 52.00-80.00.
BULLS 48.00-63.00.
GOOD COWS 48.00-52.00, FEW TO 55.00.
COWS MEDIUM 45.00-48.00.
COWS POOR OR SMALL 41.00 AND DOWN.
CATTLE MARKET STEADY.
CALF MARKET STEADY.
HORSES TO 565.00.
GOATS TO 75.00.
REMARKS: GOOD RUN OF CATTLE; PRICES REAL GOOD.

Belleville Hay

Wednesday, August 18
 Belleville, PA
 Report Supplied by Auction
21 LOADS OF HAY.
MIXED HAY: 57.50-80.00.
ALFALFA: 70.00-105.00.
EAR CORN: 7 LOADS, 50.00-95.00.
OATS: 1.70 BU.

Dewart Hay

Dewart, PA.
 Monday, August 16, 1993
 Report Supplied by Auction
8 LOADS OF HAY, 76.00-142.00.
STRAW: 1 LOAD, 83.00.
WOOD: 37.50.
CORN: 5 LOADS, 69.00-77.00.
OATS: 1.45 AND 1.55 BU.

Frederick Livestock Auction

Frederick, Md.
 August 16, 1993
 Report Supplied by Auction
SLAUGHTER COWS: 90 HEAD, .50 HIGHER. UTILITY 49.00-52.50; HIGH DRESSING 53.00-56.50; CANNERS 44.00-48.00; SHELLY 44.00 DOWN.
BULLS: YG#1 1300 LBS. 59.00-63.00;

YG#2 1200-1600 LBS. 56.00-58.00.
FED STEERS: FEW OFFERED; SELECT HOLSTEINS 1050 LBS. TO 58.00.
HEIFERS: DAIRY CULLS 1075-1450 LBS. 54.00-58.00.
VEAL CALVES: CHOICE 200-300 LBS. 98.00-105.00; CULLS 80-110 LBS. 45.00-55.00; 50-80 LBS. 42.00-53.00; WEAK/ROUGH 40.00 DOWN.
FARM CALVES: HOLSTEIN BULLS #1 95-125 LBS. 145.00-166.00; 80-90 LBS. 110.00-145.00; HOLSTEIN HEIFERS #1 95-120 LBS. 180.00-195.00; 75-90 LBS. 115.00-190.00; BEEF X BULLS TO 177.00; HEIFERS TO 160.00.

BUTCHER HOGS: US#1-3 215-260 LBS. 46.75-47.35; 1 LOT 268 LBS. AT 45.25; 1 LOT 191 LBS. AT 41.25.
SOWS: NONE.
BOARS: 215-280 LBS. 32.00-33.00.
STOCK CATTLE: STEERS 250-350 LBS. 97.00-106.00; 400-500 LBS. 80.00-89.00; FEW 750-900 LBS. TO 64.00; HOL 400-600 LBS. TO 67.50.
HEIFERS: FEW OFFERED.
BULLS: 300-500 LBS. 80.00-92.00.
LAMBS: NO CHOICE OFFERED; MEDIUM 90-110 LBS. 41.00-43.00.
GOATS: LARGE 58.00-66.00; MEDIUM 27.00-38.00.

PIGS AND SHOATS: BY THE HEAD FROM TESTED HERDS. 1 LOT 70 LBS. 30.00.
HATFIELD QUALITY MEATS WEIGHT AND GRADE PROGRAM--BASE PRICE 50.00 AT PLANT. PLUS BONUS ON QUALITY HOGS. BUYING STATION HEDL AT FOUR STATES IN HAGERSTOWN.

Grantville Livestock

Grantville, Maryland
 Report Supplied by Auction
 Sat., August 14, 1993
STOCK BULLS AND STEERS 200-500 LBS. 70.00-106.00.
STOCK HEIFERS: 55.00-87.00.
SLAUGHTER STEERS GOOD TO CHOICE 70.00-73.00, MEDIUM TO GOOD 59.00-69.50.
HOLSTEIN STEERS HEAVY, NOT AVAILABLE, LIGHT, 54.00-62.50.
SLAUGHTER HEIFERS GOOD TO CHOICE, NOT AVAILABLE; MEDIUM TO GOOD 58.00-64.00.

BULLS HEAVY 60.00-63.85, LIGHT 58.00-63.50.
COWS FEW HIGH DRESSING 48.00-53.00, UTILITY HOLSTEIN 48.00-50.00, CANNERS 38.00-47.00, CULLS 38.00 AND DOWN.
VEALS GOOD TO CHOICE 90.00-100.00, MEDIUM TO GOOD 60.00-84.00.
BOB CALVES: 50.00 AND DOWN.
HOLSTEIN BULL CALVES RETURN TO FARM 90-120 LBS. 100.00-145.00.
HOLSTEIN HEIFER CALVES RETURN TO FARM 100-120 LBS. 100.00-195.00.
BEEF CROSS CALVES RETURN TO FARM UP TO 125.00.
HOGS TOP QUALITY 46.50-48.00, HEAVY 45.00-47.00, LIGHT 37.00-44.00, FEEDER PIGS BY THE HEAD 15.00-40.00.
SOWS 30.00-35.00.
MALE HOGS 25.00-31.00.
LAMBS 47.00-58.00.
SHEEP 20.00-32.00.

A & C Diffenbach Auction Inc.

100 West Jackson Street • Box 186 • New Holland, Pennsylvania 17557
 Office: (717) 355-7253 • FAX: (717) 355-9547

HAY & GRAIN SALE EVERY MONDAY - 10:00 A.M.

TUES. AUG. 31	TRACTOR & AUTO (ANTIQUE)	CANCELLED	10:00 A.M.
WED. SEPT. 1	WINROSS TRUCKS & TOYS		6:30 P.M.
TUES. SEPT. 7	WHOLESALE FURNITURE		6:30 P.M.
FRI. SEPT. 10	FARM EQUIPMENT & SUPPLIES		9:00 A.M.
TUES. SEPT. 21	QUILT, CRAFT & SUPPLIES		9:00 A.M.
WED. SEPT. 22	QUILT & CRAFT		9:00 A.M.

EQUIPPED FOR AN AUCTION AT YOUR PLACE OR OURS

ALAN DIFFENBACH AUCT. - AU2258-L



HAY, STRAW & GRAIN SALE

Every Thursday at 1 p.m.
 Auction will continue all year long
Vintage Sales Stables, Inc.

(Rt. 30, 10 miles east of Lancaster in Paradise, PA)

For Info. 717-412-4181 business 215-588-8518 home
 L. Robert Frame, Sr. president
 Glenn S. Frame Mgr.



Hay And Straw Sales Will Start At 10 A.M. Every Wed.

GOOD'S AUCTION
 111 North Maple Ave.
 Leola, PA 17540
 717-656-8911
 717-656-9554

Excellence in Biological Agriculture



AgRestore, Inc.

We offer complete Soil & Livestock Management Programs using products formulated to produce healthful food supplies at reasonable cost without toxic chemicals.

Tours in your area:

Mercersburg	Tuesday, August 24	Levi and Nathan Burkholder, 10286 Mercersburg Road 717-328-2587
Lebanon	Wednesday, August 25	Stephan G. Lantz, 305 Iona Road No phone/call AgRestore office
New Holland	Thursday, August 26	Ennis Hoover, 371 Grist Mill Road 717-354-5415
New Holland	Thursday, Sept. 30	Nelson & Don Weaver, Weaver Homestead Farms, 245 White Oak Road 717-354-4398

Write or call for our free introductory video.
 412-836-2404 or AgRestore, Inc.
 94 East Bremer Avenue, Waverly, Iowa 50677

CRAIG'S HOG BUYING STATIONS

Four Locations To Serve You!
 Receiving Butcher Hogs:



All Stations Open 7:30 am to 11:00 am



We Still Buy Hogs The "Old Fashioned Way"



- No Advance Scheduling
- No Consignment Too Small Or Too Large
- Weighed & Paid For Upon Arrival
- Competitive Prices Paid For Light Weight Hogs, Sows & Boars

For More Information Contact Jeff Craig At (717) 532-5224

NEW HOLLAND SALES STABLES INC. THE ACTION AUCTION

LIVESTOCK IS OUR ONLY BUSINESS

MONDAY

SLAUGHTER HOGS
EARLY BIRD HOG SALE
7:30 A.M.
 Sell Your Hogs At New Holland Sales Stables, Inc. See them weighed, sold and pickup your check.



10:00 A.M.
HORSES
MULES

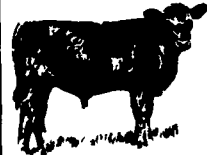


1:30 P.M.
BEEF SALE
SHEEP
GOATS
CALVES



THURSDAY

Beef Auction 10:00 A.M.



BULLS, STEERS, BEEF COWS

1:00 P.M.
STOCKERS & FEEDERS



11:30 A.M.
SHEEP
GOATS
CALVES



WEDNESDAY

HEIFER SALE 11:00 A.M.
COW SALE 12:00 NOON



DAIRY COWS

We have the usual run of 50 to 100 Heifers, all ages. Loads of fresh cows and springers from our regular shippers. Also some local fresh cows and springers.

1:30 P.M.
FEEDER PIG SALE



Pigs are accepted after 8:30 A.M. State graded from 8 to 12. Dairy Barn and Feeder Pig Barn are cleaned and disinfected weekly for your protection.

NEW HOLLAND SALES STABLES, INC.

12 Miles East of Lancaster Off Route 23, New Holland, Penna.

MANAGERS

Norman & David Kolb - 717-397-5538

Field Representatives

Luke Eberly - 215-267-6608 738-1865
 Homer Eberly - 215-267-3047
 Ron Ranck - 717-656-9849

Sale Barn Office Manager
 Roger Floyd - 717-354-4341
 FAX #717-355-0706

Order Buyer
 Paul Good - 215-445-8662