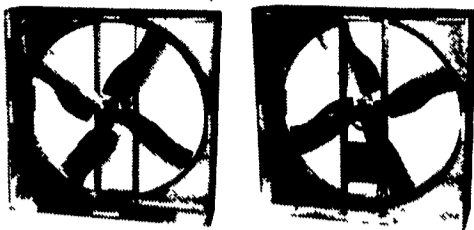




TRUCKLOAD SALE... FANS... 36" & 48"



BELT DRIVE OR DIRECT DRIVE PANEL FANS FOR AGRICULTURE



- Galvanized Construction
- Wide Cambered Propeller
- Riveted Blades
- Unique Captured Bearings — Strong formed bearing casing maintains proper alignment and spacing
- Vertical Support Frame — Supports both fan and motor to assist pulley alignment and easy adjustment
- Screens Pre-cut — For easy, quick mounting of motor
- Totally enclosed motors with shielded ball bearings, continuous duty type and energy efficient.
- Optional Discharge Diffuser Cone — Increases performance of fan without additional HP
- Optional Belt Tightener — Maintains proper belt tension for peak airflow

ENERGY EFFICIENT ENCLOSED MOTORS

- Heavy-duty totally enclosed motors with sealed ball bearings are designed for continuous work load.
- Available in two-speed.
- Built-in thermal overload for low line-voltage protection on all single phase motors.

ALUMINUM SHUTTERS:

- All Aluminum Construction
- Counter Balanced Blades
- Nylon Bearing
- Stainless Steel Hinge Pins
- * Low Air Resistance *
- * Reduces Sticking in Dusty and Moist Conditions *



SEE US FOR YOUR REMODELING NEEDS

Compare the difference!

SCHAEFER Barn Cooler®

The only patented air circulation fan on the market! Because of its design, it provides more air movement and therefore more cooling effect than any other circulation fan.



(#VS20-8000 c.f.m. #VS24-8500 c.f.m.)

U.S. Pat #4,819,183



Phillips

Long Lasting
5,000 Hours

Save 30% On Your Electric Bill with our 175 Watt Heat Bulb

15 bulbs/case

These 175 watt heat lamp bulbs put out as much heat as a 250 watt bulb but use 30% less electricity at \$.10 per K.W.H. that's \$37.50 over the life of the lamp. Even better, if you run 40 lamps that's a savings of \$1,500.00.

Bulbs are Heavy Duty Industrial type with high brass base and are resistant to urine and water splash damage, so you'll save even more on those costly breakage problems.

STANDARD 125-250 WATT BULBS AVAILABLE CHECK OUR PRICES BEFORE YOU BUY!

The Nitrogen level of the pit waste will be enhanced by 300% with **PIT-BOSS™**



Pit Additive To Reduce Pit Odor And Pit Solids

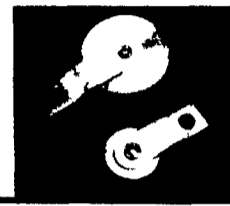
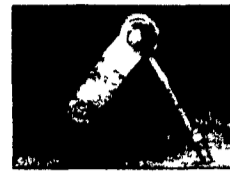
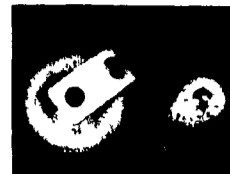
WEDGE ANCHORS



AIRCRAFT QUALITY CABLE



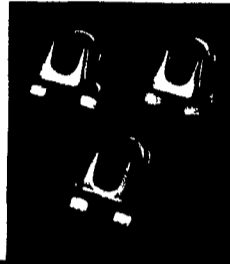
PULLEYS



HEAVY DUTY WINCHES

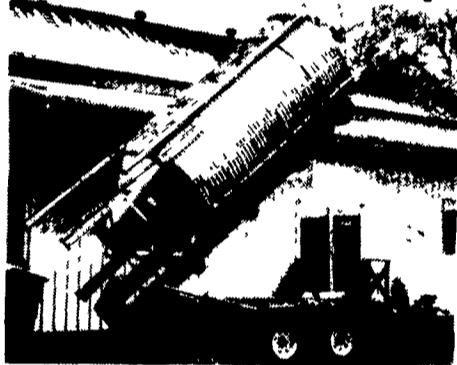


STAINLESS STEEL CABLE CLAMPS

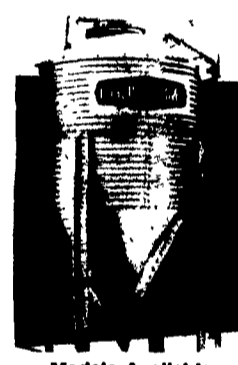


QUALITY CHORE-TIME BINS

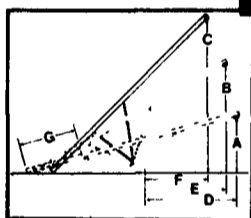
We Assemble, Deliver & Set-Up Bins On Your Farm



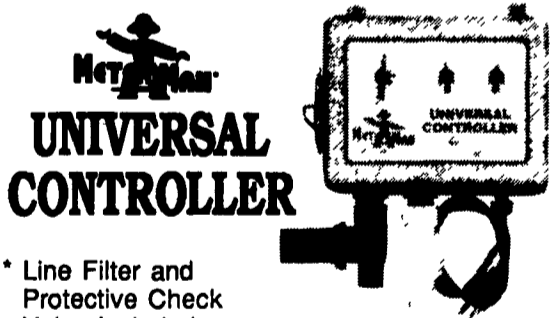
Picture Showing CHORE-TIME Bin Set-Up With Hydraulic Bin Trailer



Models Available: Your Choice Of 6, 7, 9, 12 And 15 Ft. All Galvanized Hopper-Bottom Bins



TRANSPORT GRAIN AUGERS



UNIVERSAL CONTROLLER

- * Line Filter and Protective Check Valve Included
- * Simple and Automatic Control of Water Flow
- * Dependable Solid State Circuitry
- * Ideal Control For Livestock and Poultry Cooling Systems

UCS04B Droplet Emitter



HOG CONFINEMENT EQUIPMENT

Discounted Factory Direct Prices

FARROWING CRATE

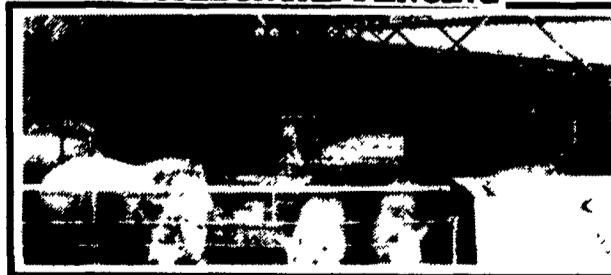


Adjustable Swing Side w/Pig Saver Bar

BREEDING/GESTATION STALLS



HORIZONTAL FENCING



Also Available: Vertical Fencing

Full Line Of Parts In Stock For Your Poultry And Hog Needs



24 Hour Service



410 E. LINCOLN AVE. (RT. 422)

MYERSTOWN, PA 17067

PH. 717-866-7565

Hours: M-F 7:00-5:00; Sat. 7:30-11:30

Check Our Warehouse Prices

WE SHIP UPS



SEE JAY OR PAUL FOR YOUR



JAY ZIMMERMAN — Sales

PARTS AND EQUIPMENT NEEDS



PAUL HIGH — Sales