

Agricultural Leaders Sign Memorandum

VERNON ACHENBACH JR.
Lancaster Farming Staff
ROCKSPRING (Centre Co.) — Pennsylvania's agricultural leaders on Tuesday signed a memorandum of understanding to take effect immediately to operate under a one-plan-per-farm beauracacy in an effort to eliminate waste, confusion, frustration, and unnecessary travel, delays and repetition of work for all involved.

Immediately following a PSU Ag Progress Days' meeting of the Penn State College of Agricultural Sciences Alumni Society (CAAS) in the Rockspring facility's Agriculture Special Events Building, leaders of the major farming organizations, and federal, state and local agencies sat down to sign a memorandum of understanding between all involved.

The memorandum calls for each agency to cooperate with other

agencies while attempting to fulfill its particular mission.

According to a news release from Barry Frantz, project coordinator for the Pennsylvania Association of Conservation Districts, "The memorandum calls for groups to work together to eliminate conflicts and duplication between different programs, change burdensome rules, regulations, policies and procedures, share information and accept common technical standards.

"The One Plan concept has been the subject of a two-year pilot project which will finish on Sept. 30 this fall," said Frantz in the statement.

"Conservation districts in Lehigh, Northumberland and York counties, and later in Centre, Erie and Union counties, coordinated efforts of multi-organizational teams which worked with farmers to develop coordinated, integrated management plans.

"Farmers in the project recommended that agencies and organizations continue the One Plan program after the pilot project was over in an effort to further improve programs and services," according to Frantz.

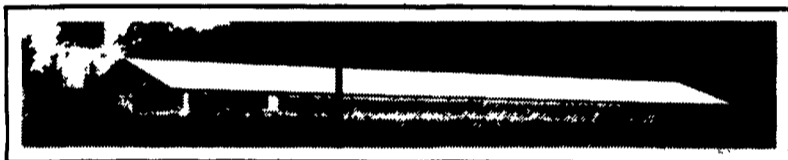
On Tuesday, signing the agreement were Lamartine Hood, dean of the PSU College of Agricultural Sciences, Boyd Wolff, state secretary of agriculture, Caren Glotflety, deputy secretary for water management for the DER, Greg Grabowicz, representing the state Game Commission, Cheryl Cook, state director of the Farmer's Home Administration, Rex Wright, representing the USDA's Agricultural Stabilization and Conservation Service, Dick Duncan, state conservationist for the USDA Soil Conservation Service, Gordon Hiller, state master of the Pennsylvania State Grange; Tim Bowser, executive director for the Pennsylvania Association for Sustainable Agriculture; and Francis McGrail, president of the Pennsylvania Agromomic Products Association.

Other agencies which have indicated an intention also to sign the document include the Pennsylvania Association of Conservation Districts (which sponsored the one plan pilot project), the state Fish and Boat Commission, and the United States Fish and Wildlife Service.

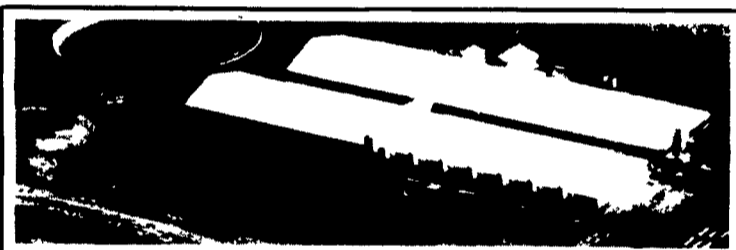
A representative of the Pennsylvania Farmers Association/Farm Bureau was not present, nor was the statewide organization mentioned at the signing. The PFA/Farm Bureau was not contacted prior to presstime.



Surrounded by representatives of supporting state agencies and organizations, state Secretary of Agriculture Boyd Wolff signs his name to a memorandum of understanding between all agencies involved with regulating and supporting agriculture that they will be cooperative and not contradictory — a One Plan program. Smiling is Lambert Hood, dean of the PSU College of Agricultural Sciences, who was the first to sign.



2000 Head Finisher
1200 Sow Feeder Pig Unit



FARM INCOME SPECIALISTS

Tri-County can assist you in planning a facility to meet your needs including cash flows, production contracts, financing, nutrient management planning and permits. We offer top quality at an affordable price.

DESIGN AND CONSTRUCTION

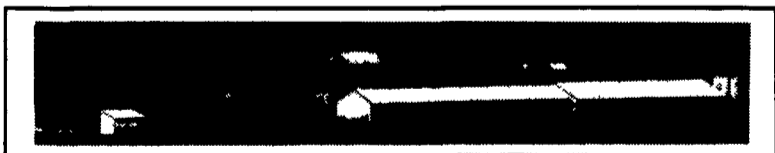
Computerized estimating and drafting for all your construction and equipment needs. Renovations and new construction packages - large and small. Tri-County's experienced staff can design a building to meet your needs. Check our prices on concrete manure tanks.

SERVICE

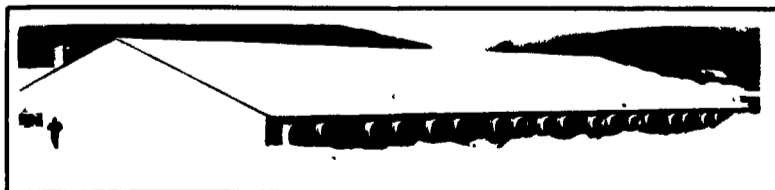
We offer a specialized staff to handle all your repair and service needs. Emergency repairs are available 24 hours a day.

PARTS

We inventory a large selection of parts available for immediate pickup or U.P.S. delivery such as ventilation, feeding, watering, penning, flooring, specialized building materials and much more.



250 SOW FEEDER PIG UNIT



3000 HEAD 5 ROOM FINISHER

Call Tri-County for all your swine, poultry & livestock facility needs. We offer a complete line of quality products and services for today's producer at a price you can afford.

TRI-COUNTY
CONFINEMENT SYSTEMS, INC.

608 E. Evergreen Rd Lebanon, PA 17048 717-274-3488

Hours
Mon-Fri
7:00 to 4:00
Sat
8:00 to 12:00

SHIP
DAILY

