



This series of photos shows a deep-tillage device called a V-ripper as it digs 15-inches into the soil to loosen the hard-packed soil. In hay for more than 25 years, the field was used for many years as a parking lot at Ag Progress. Over the years, during dry and wet conditions, cars and other equipment packed the soil, inherently full of rocks and clay, which help contri-

bute to compaction. Also called a subsoiler, the V-ripper breaks up the lower layers of topsoil and the subsoil to allow for better plant root growth. The subsoiling demonstration was one of several tillage demonstrations that visitors could see at this year's Ag Progress Days.



## Once A Parking Lot, Now A Deeply Tilled Field

**ANDY ANDREWS**  
Lancaster Farming Staff  
ROCKSPRING (Centre Co.)—  
Once upon a time, they needed a place to put cars. So they used a hay field.

The hay field, you see, goes

back, way back, to a time before tons of cars and equipment were invited onto it, in conditions rainy and dry, to pack it down.

Its usefulness as a parking lot served well, but for growing crops, well, that was in question. It was

solid hardpan. Dusty and rocky. Nearly unfit for farming.

Until a deep tiller, what tillage experts call a "V-ripper," arrived one day.

Despite the rocks, clay, hardpan, and dry, dry soil, the V-ripper

did its job, and dug down deep — 15 inches deep, to be exact. The subsoiler helped loosen and dislodge the compaction layer so harmful to good root growth and overall crop condition.

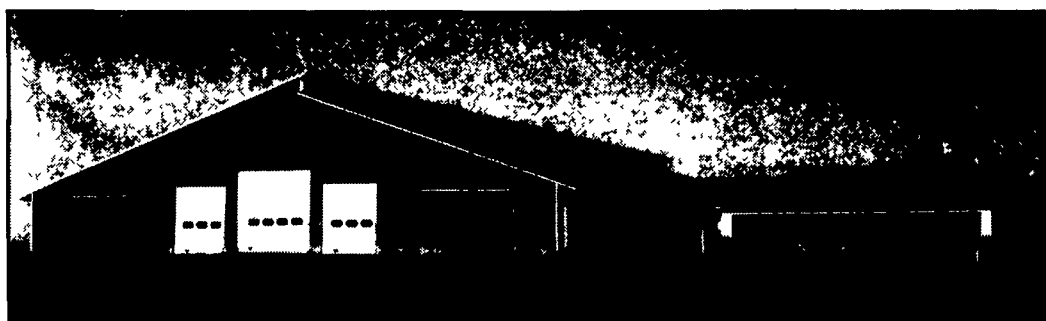
The photos here depict the "V-ripper" at work during a special

deep tillage demonstration on Tuesday afternoon at Ag Progress Days.

Needless to say, the event was well-attended, with tens of people watching from a cool, tree-lined drive.

No cars were invited, however.

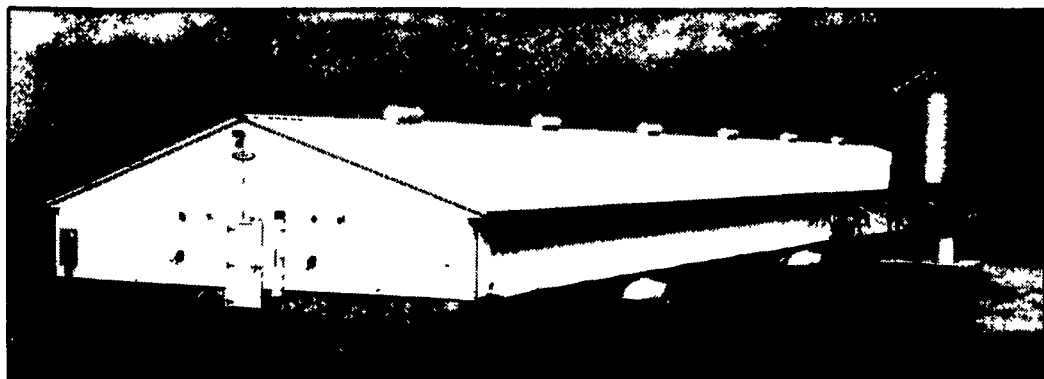
### CUSTOM BUILDER OF DAIRY, HOG, HORSE, STORAGE, RESIDENTIAL AND COMMERCIAL BUILDINGS



200 Cow Freestall Building



64 Cow Freestall Building



960 Head Hog Finishing Building

THE BRAND THAT MAKES THE DIFFERENCE.



**VALLEY VIEW CONSTRUCTION, INC.**

2622 Valley View Rd., Morgantown, PA 19543  
Office (215) 286-5407 • Home (215) 445-8317



### B&M FISHER'S PAINTING & FISHER'S PAINT OUTLET STORE

QUALITY PAINTS @ REASONABLE PRICES

- ALL TYPES OF INTERIOR & EXTERIOR PAINTING
- SANDBLASTING ■ ROOF COATING
- RESTORATION & WATERPROOFING ON STONE & BRICK BUILDINGS

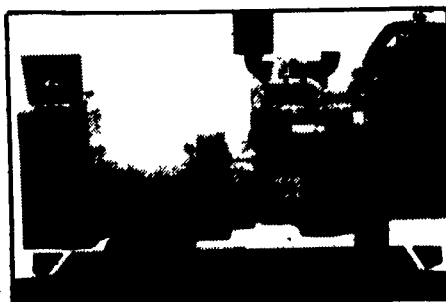
HOUSES - BARNs - FENCES - FACTORIES - ETC.

Specialists In Sand Blasting/Spray Painting Farm Buildings, Feed Mills, Roofs, Tanks, Etc. With Aerial Equipment

4056A Newport Rd., Kinzers, PA 17535 717-768-3239  
On Rt. 772 Across From Pequea Valley School

Brush, Roll Or Spray - We'll Do It Either Way  
For Jobs Large Or Small - Our Men Will Do It All

### GENERATORS



**AUTOMATIC and MANUAL SYSTEMS**

DIESEL  
L.P. GAS  
NAT. GAS  
NEW & USED



**LEROY SOMER PTO ALTERNATORS**

BRUSHLESS  
INDUSTRIAL GRADE  
11 to 60 KW

READY FOR THE NEXT STORM?

For Sales and Service Call The People Who Know Generators

**MARTIN ELECTRIC PLANTS**

280 Pleasant Valley Rd., Ephrata, PA 17522-8620

Tel: 717-733-7968 Fax: 717-733-1981