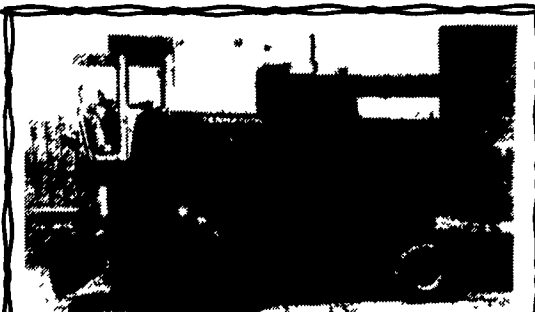


Plows: Fast hitch, IH 2 bottom mold boards and 2 bottom disc, \$200 each. (301)898-7426.

Rigid grain heads for small grain. Larry Stalter "The Combine Man" 1-800-248-2151



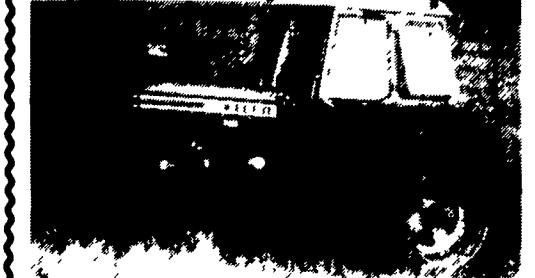
**IH 815 Combine**  
Hydro Major Rebuilt With  
863 Corn Head  
**\$8,500 OBO**  
Call 717-258-6293

Take Exit 20B  
Off Of I83, 5 1/2 MI. West  
To Belmont Farm.



**JD 450B**  
w/Backhoe and Excellent U/C,  
200 Hrs. On New Turbo Engine  
Will Separate  
**\$11,000**  
410-833-9091

Take Exit 20B  
Off Of I83, 5 1/2 MI. West  
To Belmont Farm.



**FORD 9700**  
135 HP, Fresh Engine, 2 Outlets,  
Dual Power, 540/1000, 20.8-38  
**\$8,850**  
Also Avail.  
**FORD 9700**  
Fender, Fresh Paint, 8 Spd.,  
Runs Excellent  
**\$6,850**  
410-833-9091



**J & L hay-saver feeds 20 cattle.**  
New, improved, round hay-bale feeder feeds large or small hay bales along with square bales. It proves to save hay. This feeder is built of heavy 1 1/2" pipe and 1/4" steel for ring. Available with 1/4" steel or treated 3/4" plywood floors. This 1,200 lb. feeder is built to last.

Call for more information.  
**J & L Equipment**  
St. Thomas, PA  
**(717) 369-2637**

**Excellent Ford Tractors**

7710 II, cab, air, 18.4x38, weights, 2,400 hrs.  
6610, DP, dual deluxe hyd., 18x34, 2,000 hrs.  
6800, 16 spd, 18.4x34, 1981 model, 2,400 hrs.  
6800, DP, dual hyd, 540 & 1000 PTO, 18.4x34  
2,900 hrs., 1 owner  
5610 II, DP, dual deluxe hyd., 18.4x34, 1,200 hrs.  
5600, DP, 2 remotes, 16.9x38, 2,500 hrs.  
4610, 4 WD, roll bar, dual remotes, 16.9x30, syncro  
trans w/Ford 7410 loader, 800 hrs.  
4100, diesel, 14.9x28, 1976, w/Dunham loader  
4000 SU, dal., 8 spd., 16.9x24, 3,100 hrs.  
4000 SU, gas, 8 spd., 16.9x24, 3,100 hrs.  
3000, gas, 8 spd., PS, weights, 3,500 hrs.  
2600, diesel, 8 spd., LPTO, PS, 3,100 hrs.  
2000, gas, PS, late model **SOLD**

**Equipment**

NH 144 windrow inverter, like new  
FNH 489 haybine, like new  
FNH 254 rake & tedder, like new  
NH 25 forage blower, excellent **SOLD**  
NH 824 corn head, like new  
NH 770 2 row wide corn head  
JD 8250 18x7 grain drill, excellent  
Roll bar fits 5000 thru 7610  
New Canopy fits new style Ford roll bars  
Dunham 22 QT loader w/bucket & valve, brackets  
fit 2000 thru 4610

All Tractors Tested On Our Farms.  
— Please Call For Appointment —

**Burkholder Bros.**  
Lebanon, PA  
717-272-2352 717-949-2123

WANTED: A new shear bar for Allis Chalmers 780 forage harvester. Also WANTED: a 710 IH 3x16 bottom semi mount automatic reset plow with tail wheel in furrow. Call 717-535-5379.

Shaver Post Drivers: HD8 \$1095, HD10 \$1695. Taneystown Farm & Hardware, 410/751-1500.

**NEW & USED TRACTOR & COMBINE PARTS**  
Large Selection  
Save 50%

**ANTIQUE TRACTOR PARTS**  
NEW & USED

WANTED  
USED OR ABUSED TRACTORS & CONSTRUCTION EQUIPMENT

**USED TRACTORS**

AC WD w/3 pt. \$1,500  
Oliver OC3 Loader Dozer, \$4,000  
IH 7000 diesel forklift, hydrostatic drive, 21' mast \$7,500  
JD 655  
IH 284  
MF 135, Gas, \$3,000 as is  
IH B414 diesel tractor w/2001 loader, bad motor  
Case 830 gas w/loader \$4,500  
Westendorf heavy duty loader off T W 1 0 - T W 1 5 Ford  
2-JD LA tractors  
IH 3414 Diesel, TLB, \$6,000  
JD LA w/plow & cultivator, rough, \$1,000 as is  
Ford 8600 w/blown engine \$4,000  
David Brown 1212 \$2,500 as is  
Baker 15000 Lb. Diesel forklift  
Clark Bobcat M610  
MF 205 gas forklift Du-AI model 1015 3 pt. backhoe \$3,500  
JD 215 Flexhead, nice \$4,000

**W.C. Littleton & Son Inc.**  
Laurel, DE 19956  
1-800-842-7445

New Ford 8630, 4WD, Cab/Air, 18x9 Trans.  
New Ford 7740, SLE, 16x16 Trans., Cab & Air  
New 4630, 16x8 Trans, Dual Pwr, Remotes, ROPS  
New 555D, 4WD, Cab, Tractor, Loader, Hoe  
New 455D, Cab, Tractor, Loader, Hoe  
Ford 5610, Adj. Wheels Weights, Remotes  
Ford 8600, Diesel, Runs Good, New Paint  
Versatile 276, Cab/Air, 4WD, Loader  
Ford 1900, 4WD, Diesel, 3 Pt.  
Ford 1300, 4WD, 3 Pt. & Ford 1320, 4WD w/Ldr.  
Ford 1210, 4WD, Hydro Trans., w/Loader  
Leyland 154, 3 Pt. Clean  
IHC Cub 154 w/60" Deck, 3 Pt. Hi/Lo Range  
IHC Cub w/48" Deck  
Ford 555A Tractor, Loader, Hoe, 4WD, ROPS  
Ford 540 w/Motrim Boom Rotary Mower  
New Holland 555 Skid Loader  
Ford 535, Tractor, Loader, Hoe  
New Eager Beaver 20 Ton Trailers  
(10) New & Used Trailers  
(20) Used Garden Tractors  
Moore No-Till Drill For Sale Or Rent

We Ship Parts UPS Daily  
**Straley Farm Supply**

LANDRIK Dover, PA  
717-292-2631 Fax 717-292-0422

**Galumet MOULE**



**32 Ft. Trail Pump**  
For Deep Lagoons

**NEW SPREADERS IN STOCK FOR IMMEDIATE DELIVERY**

**FOR SALE OR LEASE**

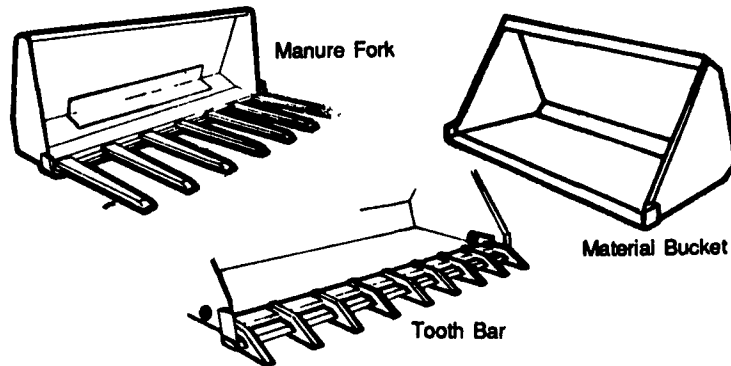
- Spreader Tanks - 2250 Thru 6500 Gallons
- Vacuum Tanks - 1500 Thru 4500 Gallons
- Earthen Pit Pumps
- Vertical Shaft Pumps
- Truck Mount Tanks - 2250 Thru 4500 Gallons
- Propeller Agitator
- Replacement Vacuum Pumps - 177 Thru 353 CFM's

**SNOOK'S EQUIPMENT**

RD 3, Box 84, Mifflinburg, PA 17844  
PH: (717) 966-2736

ASK FOR ERNEST OR DEAN  
"WE'RE HERE TO SERVE YOU"

**ATTACHMENTS for Skid Steer Loaders**



- Standard or Custom Sizes
- Hardened, Beveled Edge
- 7 gauge Material (other gauges available)

Call for a Quote!

PA (717) 354-8721

US (800) 342-0905

**ATI CORPORATION**  
325 West Main St., New Holland, PA 17557

**MANURE ROUND-UP**  
RUBBER SCRAPER

- ★ TIME AND ENERGY SAVINGS UP TO 60% TIME SAVING
- ★ SAVES ON CONCRETE WEAR
- ★ OUTLASTS BUCKET WEAR

★ MADE FROM HEAVY INDUSTRIAL EARTH MOVER TIRES  
★ THREE DIFFERENT HOOK-UPS... BUCKET, THREE POINT, BOBCAT

★ ACID RESISTING PAINT  
★ WIDTHS FROM 6 to 8 1/2 FEET  
★ Larger Widths Special Order

1. Easy to get in and out of skid loader.  
2. Manure does not splash up on skid loader.  
3. Stronger than rubber tires, steel shoulder to keep it standing up.  
4. Easily replaceable rubber strips  
5. Adaptable to most U.S. built skid loaders  
6. Rubber cross bar for pulling manure out of corners

Model 700  
**QUICK TACH SCRAPER**

**3 POINT SCRAPER**      **BUCKET**

**SALES INQUIRIES:**  
**ROBERT H. ROHRER & SONS**  
123 Charlestown Rd.  
Washington Boro, PA 17582  
**(717) 684-6500**

Int. 766; J.D. 4240, Power Shift, 4 Post Roll Bar w/roof; J.D. 90 Skid Loader w/46" Bucket, Int. Cub w/Equip.; 4000 Ford, 2000 & 8N & 9N Fords; Int. 606 Diesel Utility, Int. 140's, 140's w/Mid-Mount Mowers, AC-B with Mid Mount Mower, AC CA w/Plow & Cultivator, J.D. - AR, 3400 Ford with Loader, MF-20 w/Loader, 445 Ford w/Loader, New Arps 730 - 3 pt. Backhoe, N.H. LB620 Backhoe & Loader w/3 pt. Hitch Attachment, Maudlin Blacktop Paver w/Deutz Diesel & 8' Screed, Huber F-1500 Grader, A.C. - 6G Crawler Loader, Cat 955H Crawler Loader, Cat 977H Crawler Loader, 1987 Superior 22 Ton Tag-A-Long Trailer w/Air Brakes & Hyd. Ramps, 1981 Int. Grain Truck Model S1800 w/DT 466 Diesel & 16' Body w/Metal Sides, New 3 pt. Fert. Spreader, 3 pt. Stone Rakes, 3 pt. Box Scrapers, Regular & Heavy Duty 3 pt. Scraper Blades, Heavy Front Blades, New Woods Rotary Mowers 5' to 15' in stock at Special Prices. Buy Now & Save! NI 323 1 Row Picker, Int. 110 Forage Wagon 3 Beater w/Roof on Int. 335 Running Gear; Large Selection of New, Used & Reconditioned Equipment & Tractors.

**YORK COUNTY FARM & INDUSTRIAL EQUIPMENT CO., INC.**  
Box 222 EMIGSVILLE, PA  
(717) 764-6412 OR (717) 764-5115

Call for a Quote!  
PA (717) 354-8721  
US (800) 342-0905

**ATI CORPORATION**  
325 West Main St., New Holland, PA 17557