

'74 Chevy Walk-In, 14,000 GVW, good tires, \$995 OBO. 215/434-3988.

Gooseneck Park Hurst 16' grain dump, tandem axle, 23,000 gross. Mercedes Diesel truck with like new 16' dump body. 215/469-9633.

42' Dorsey flat, sliding tandem, 13pr. tie downs, side kit, tarp. 215/837-1380.

44' Fruehauf flatbed, in fair condition, \$1,800. Lanco. 717/396-9718.

'70 Int. 18' dump truck, rough, \$1,000. 410-429-1927

'83 Ford F250 Super Cab w/9' flat bed, 460 auto, PB, PS, AM-FM, 8,800 GVW, Class 3 hitch, \$3,600. 717-733-2873

'84 Mack-S200, 196,000 miles, 11R22.5, 144" 185H2, diesel, new main bearings, 185,000. \$4,300. 717/776-5672.

## E-TOWN DODGE

1992 Handicap Mini-Van, 5000 Original Miles

New Coachman Conversion Vans In Stock

6 Diesel Pick-Ups In Stock —

CALL MILTON HESS  
Certified Truck Specialist  
717-367-6644  
717-653-6667  
Elizabethtown, PA



### INTERNATIONAL 6x6 BRIDGE TRANSPORTING STAKE BODY TRUCKS

Front Winch, PS, Air Brake, 1400/20 Tires, 21 ft. Bed with removable steel racks. Continental 6 cyl. engine. LIKE NEW 900-5,000 Miles. Excellent for off road heavy duty cargo transporting with their all wheel drive and ability to climb a maximum grade of 70 degrees. Double Frame. A must for every farmer \$9,450 Each  
**814-834-1018 St. Marys, Pa.**



**1985 Great Dane 96"x42", Alum. Head Board, Alum. Floor 11x22.5 Steel Budds, O.B. Drums, 75% Rubber, 50% Brakes, Six Tie Down Straps Like New**

**\$6,500.00 OBO Must Sell**  
Also Mid 70's Peterbilt Air Ride \$500.00 OBO  
**717/627-0295**

## REFRIGERATED MERCEDE BENZ TRUCKS



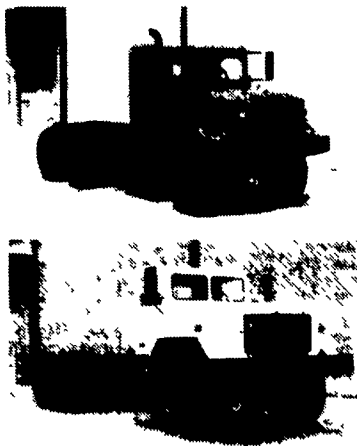
Can Be Used For Cold Storage Inside Or Outside 14'-22' Boxes Starting \$3500 And Up  
**201-663-0243**

# ARMY TRUCK PARTS

CHAMBERSBURG, PA

SERVING THE NORTHEAST OVER 40 YEARS

THE NATION'S LARGEST ARMY TRUCK and PARTS DEALER



GMC - REO - 5 TON  
DODGE 3/4 TON  
KAISER - JEEP 1 1/4 TON  
ALL 6x6 & 4x4

ENGINES  
TRANSMISSIONS  
TRANSFER CASES  
DRIVE TRAIN  
CAB KITS

Request Our Free Army Truck Parts Catalog

## MEMPHIS EQUIPMENT

821 Lincoln Way West  
P.O. Box M  
Chambersburg, PA 17201

717/263-4194 FAX 717/263-4555

ART WELLER, GEN. MGR.  
MARK SIPES, PARTS MGR.



## AUTO BODY & SALES

1701 B Division Hwy  
New Holland, PA • 717-355-0644

Specializing In Rebuilt Collision Damage Vehicles



'93 CHEVY S-10  
TAHOE EXT. CAB  
2.5L, AT, PS, PB,  
AC, Cass., 3,654 Mi.  
**\$5,500**



'92 DODGE DAKOTA  
SPORT  
3.9L V6, AT, AC, PS,  
PB, 33,000 Mi., Front  
Damage, PA Salvage,  
Can be driven  
**\$4,800**

Nicest Pre Owned Trucks Anywhere!

RTE. 422,  
WEST  
LEBANON, PA

(Across From Lebanon Valley Mall)



717-274-2000

FAX

717-274-2717

Business Hours  
Mon-Fri 9-9  
Sat 9-4

## THIS IS JUST A SMALL PORTION OF OUR HUGE INVENTORY



Workhorse, '87 Ford F-250 4x4  
480, Auto, AC, Dual Tanks,  
82,000 Original Miles,  
Real Clean



Super Cab Dualy '82 Ford  
F-250 XLT Lariat Like New, 15,000  
Miles, 480 I.L., AT, O/D, A/C, Captain  
Chairs, Custom Wheels, A Real Looker



Enclosed Utility '88 Ford F-350  
9 Ft. Reading Box,  
351 I.L., Auto, A/C, 27,000 Miles



484 Flatbeds  
'89 GMC 3500  
Short 137 W.B. Auto Dual  
Tanks, 25,300 Miles  
Will Sell As Chassis



Dump It '89 Ford Super Duty  
48,000 Miles, 480 5 Spd., 14,500  
GVW, A Real Worker



4x4 Dump '88 GMC 3500  
12 Ft. Body, Removable Sides,  
350 I.L., Auto, 32,000 Original Miles



Cube Van, '88 Ford E-350  
Nice One, Only 44,000 Original  
Miles, V8, Auto, 14 Ft. Aluminum Box



Cummins Turbo Diesel  
'90 Dodge 250 4x4, Auto  
Very Clean, Tow Pkg., Lock Out Hubs



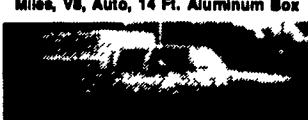
Big Box '90 Ford Super Duty  
480 Auto, 55,000 Miles,  
14,500 GVW, 12 Ft. Box,  
Roll Up Door



Cummins Turbo Diesel '89 Dodge  
250 4x4 8510 GVW, Auto, AC,  
Tow Pulls Like Crazy



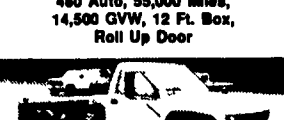
'91 Ford F-350 4x4  
A Beauty, 7.3 Diesel, Auto, Overdrive,  
XLT Lariat, 4:10 Axle,  
Custom Wheels



4 Wheel Drive Crew Cab  
Utility '89 GMC 3500  
V8, Auto, 28,000 Miles,  
Rare Find



Diesel 4x4 '89 Ford F-250  
7.3 Diesel, Auto, AC, 4:10 Axle,  
53,000 Miles



4 Wheel Drive Chassis  
'89 Chevy 3500  
Rare Find, Long 181 Wheelbase,  
350 I.L., 4 spd., 37,000 Miles



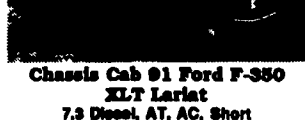
Grain Body Dump, Low Profile  
'90 GMC 8L Topkick 8,400 Original  
Miles, Like New, 368 V8, 5 Spd.,  
28,000 GVW, 12 Ft. Body



Super Duty Chassis  
'88 Ford F-450  
Local Trade, 480 I.L.  
5 SP O/D, Long Wheel Base  
**\$9,900**



'88 Chev Cheyenne C-2500  
4x4, 380 Auto, AC,  
Towing Package  
**\$10,900**



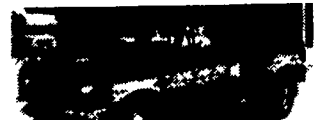
Chassis Cab '91 Ford F-350  
XLT Lariat  
7.3 Diesel, AT, AC, Short  
137 W.B. 4:10 Axle, 20,500 Miles



Super Duty Chassis '89 Ford  
F-450 Short 137 W.B. 14,500  
GVW, 480 I.L., 5 Spd., O/D,  
44,800 Miles, Real Nice



Super Duty  
'82 Ford F-450  
Factory Warranty Remaining,  
18,300 Miles, 7.3 Diesel, AT,  
AC, 8ht. 137 Wheelbase



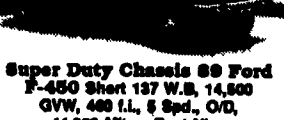
Prize Winner '91 Ford F-350  
Dualy 7.3 Diesel, Lots of Power,  
Auto Overdrive, 18,000 Original Miles,  
Air Conditioning, Custom Paint,  
Chrome Wheels



Save Big \$\$\$ '93 Ford  
F-250 XLT Only  
2,000 Miles, 361 V8, Auto, AC,  
Loaded, Power Angle PLOW  
**CALL NOW**



Super Cab 2 Wheel Drive  
'91 Ford F-250 XLT Lariat Perfect,  
26,000 Original Miles, 351 I.L., Auto,  
AC, 8,800 GVW, The Nicest Anywhere



480 Super Cab 4x4 '91 Ford  
F-250 XLT Lariat  
18,000 Miles, Auto, AC, Trailer  
Tow Pkg., 4:10 Limited Slip Axle



Big Diesel Super Cab  
'91 Ford F-250 XLT Lariat  
What A Truck, 7.3 Diesel, AT,  
O/D 42,000 Original Miles, They  
Don't Come Any Near

Hey, Truck Buyers Look  
'92 Ford F250 XLT Lariat  
7.3 Diesel, 5 Sp, O/D, 14,800 Original  
Miles, Air Conditioning, Power Locks,  
Power Windows, Tilt, Cruise, 8800 GVW  
A Beauty \$15,500