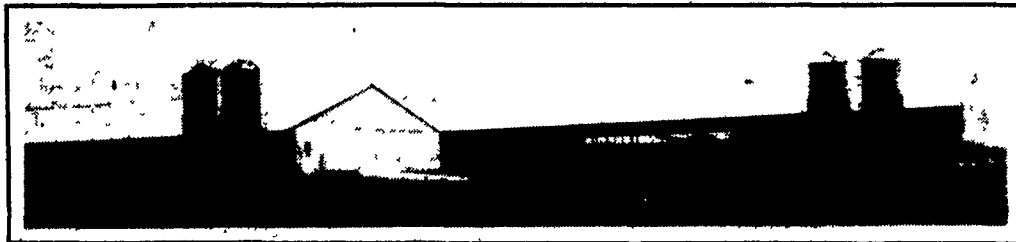


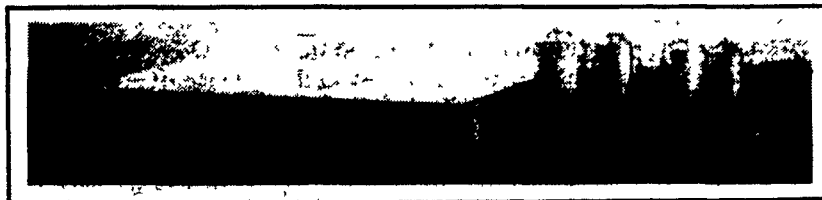
**ADD
INCOME TO
YOUR FARM**



This 2-stage facility features a 50'x215' brooder building and a 50'x520' growout building designed for 8,000 Toms.

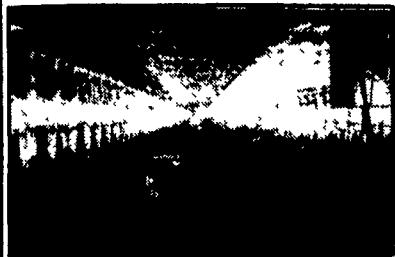
**CONTACT
FARMER BOY AG...**

Your Professional Company

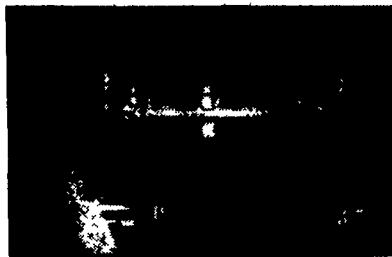


2200 HEAD FINISHER

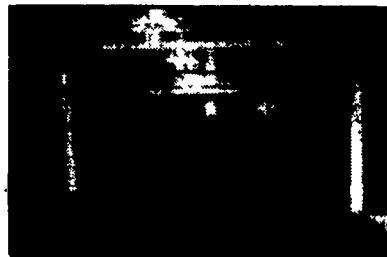
- Custom Design
- Assistance In Financing
- Assistance In Securing Building Permits
- Assistance In Nutrient Management Planning



BREEDING & GESTATION



FARROWING



NURSERY



FINISHING

★ PA'S OLDEST & MOST EXPERIENCED POULTRY & SWINE BUILDING & EQUIPMENT COMPANY



BIG HUSKY

When It says **BIG HUSKY**
its gotta mean quality

POLY WATERER

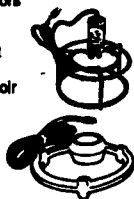
- 80 Gal capacity
- Total polyethylene
- No rust or corrosion

- Improved UV stability over competition
- Our dependable Drain valve and float
- **TWO YEAR GUARANTEE**
- **STAINLESS STEEL CHEW GUARDS**
- Optional holdown brackets
- Optional heat for winter
- Large snap down 12" Cover
- Special grooved side for heater cord protection
- Gallon calibration molded into sidewall

- Two large 18 x 20 recessed drinkers
- Easy clean out with recessed drain plug
- Waterer is lightweight but 15% thicker and 20% heavier than competitors

AH-483
1000 watt
heater
for reservoir

AH-49
250 watt
heater
for trough



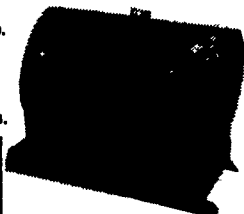
SPECIFICATIONS		HEIGHT		WIDTH	
MODEL	CAPACITY	TO RESERVOIR	TO TROUGH	21"	24"
WP-30	80 gal.	17 1/2"	2"	20 1/2"	24"

HOG WATERER

BIG HUSKY SUMMER FOUNTAIN

- Built strong and rugged like our name.
- 100 gallon capacity.
- Five drinking spaces on each side.
- Drinking trough 3 1/2" deep, 6" wide.
- Trough made from heavy 16 gauge steel.
- Heavy galvanized steel body, lock seamed with heavy swedging.
- Drain plug on end for easy draining.
- Side straps made from stainless steel.
- Dependable float valve.
- 6" top 181 hole.
- Heavy 11 gauge and pull.
- Oak skids.

SPECIFICATIONS				
Number	Height	Width	Length	Ship. Wgt.
1400	33 1/2"	36"	48"	105 lbs.



CHECK YOUR CURTAINS

- Do They Have Tears or Holes?
- Rotten or Brittle?
- Manual or Automatic Winches Working?

Call Today For Repair, Adjustment
Or New Installation.



NEW



BOSS HOG FLOORING

HEAVIEST WIRE FLOORING MADE

Boss Hog's patented "Double Smooth" design plus the strength and durability of its exclusive 5/16" diameter wire make this your best flooring buy! Insist on Boss Hog, the wire with the bump on the bottom. From the nation's largest manufacturer of animal flooring.

Patented "Double Smooth" design — only from Boss Hog



SMOOTHER BETTER FOOTING SMOOTHER EASIER CLEANING LOOK FOR THE BUMP ON THE BOTTOM

QUALITY CHORE-TIME BINS

We Assemble, Deliver & Set-Up Bins On Your Farm



MEDICATOR

DOSMATIC PLUS



**DP20
EZM**

Water
Driven
Liquid
Injector



**Tunnel
Ventilation
For
Maximum Cooling**



WALL HOUSINGS:

Galvanized slant housings with flanges for mounting to exterior wall for exhaust applications in tunnel ventilated and cooled buildings. The slant arrangement protects the components from weather, incorporates wiring knockout, provides convenient shutter mounting with quick release clips, includes outlet screen and enhances air flow through velocity regain. Housings are available knocked down crated with fan and shutters, motors shipped separately.

Full Line Of Parts In Stock For
Your Poultry And Hog Needs

Hours: M-F 7:00-5:00;
Sat. 7:30-11:30

Check Our
Warehouse
Prices

WE
SHIP
UPS



SEE JAY OR PAUL FOR YOUR

**PARTS
AND
EQUIP-
MENT
NEEDS**



JAY ZIMMERMAN — Sales



PAUL HIGH — Sales

Swine & Poultry Systems Specialists
FARMER BOY AG.

410 E. LINCOLN AVE. (RT. 422)

MYERSTOWN, PA 17067

INC.

PH. 717-866-7565

8-14



24
Hour
Service