

# MORE CAPACITY WITH LESS HORSEPOWER!

11" Tiltng Discharge Auger with 10' reach.



MODEL ATG-A

**BIG CAPACITY GRAIN ROLLER MILL**  
— 900, 1200 and 1800 Bu. per Hr.

Built for big capacity delivery and heavy duty operation. One-fast-roll operation gives more capacity with less horsepower, provides self-cleaning action with wettest material. Also available with blower discharge on direct drive from roll shaft.

## Automatic

### MY-D HAN-D

- BALE ELEVATORS
- CONVEYORS
- PORTABLE ELEVATORS

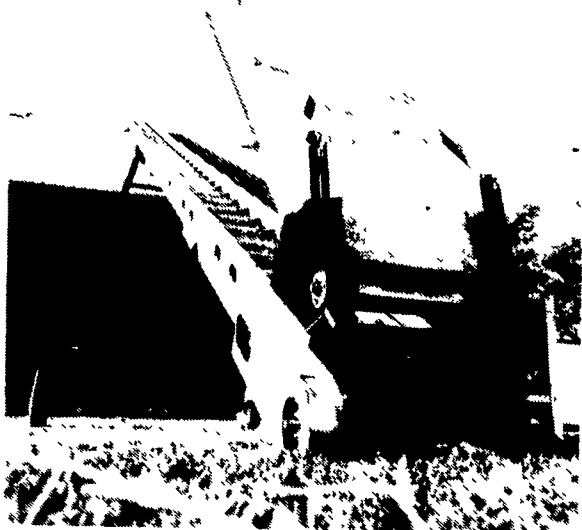
MY-D HAN-D:

**BUILT LIKE YOUR FARM DEPENDS ON IT.**

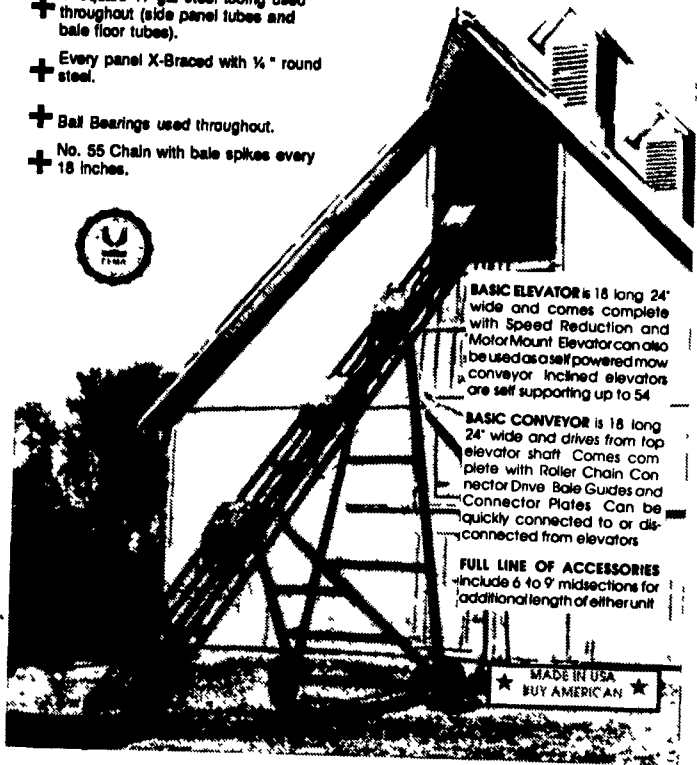
**Pound for Pound, Dollar for Dollar**

MY-D HAN-D:

**Gives You More**



- + 1" square 17 ga. steel tubing used throughout (side panel tubes and bale floor tubes).
- + Every panel X-Braced with 1/2" round steel.
- + Ball Bearings used throughout.
- + No. 55 Chain with bale spikes every 18 inches.



**BASIC ELEVATOR** is 18 long 24" wide and comes complete with Speed Reduction and Motor Mount. Elevator can also be used as self-powered mow conveyor. Inclined elevators are self supporting up to 54'

**BASIC CONVEYOR** is 18 long 24" wide and drives from top elevator shaft. Comes complete with Roller Chain Connector Drive, Bale Guides and Connector Plates. Can be quickly connected to or disconnected from elevators.

**FULL LINE OF ACCESSORIES** include 6 to 9' midsections for additional length of either unit.

MADE IN USA BUY AMERICAN

**WE HAVE AUGERS & SINGLE CHAIN IN STOCK!**

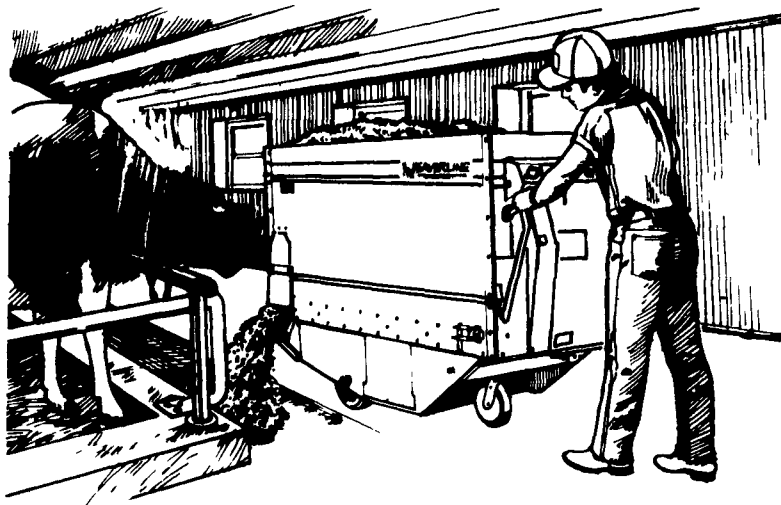
# NEW

# Weaverline

**Cut feeding time!**

**ON IS**

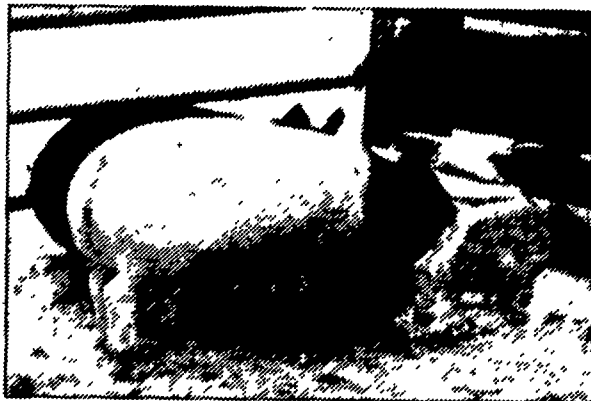
**WAY**



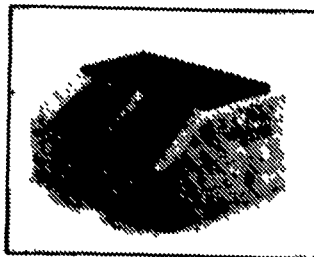
- ★ 20' La
- ★ Laver
- ★ Full 36
- ★ No 4
- ★ Exhs
- the cap

## WEAVERLINE

**Thrifty King™**



Electric-free fountains that live up to the Ritchie® name.



**Model HG2-1 Hog Two-Drink/One Side**  
Part No. 16298  
31 1/4" x 24 1/8" x 8"  
Capacity: 80 hogs



**Model HG2 Hog Two-Drink**  
Part No. 16259  
31 1/4" x 20" x 8"  
Capacity: 80 hogs



**Model HG4 Hog Four-Drink**  
Part No. 16260  
31 1/4" x 31 1/4" x 8"

RELAX...

# Ritchie

WATER EM

See These And Other Fine Products At Our Display At  
**AG PROGRESS DAYS, AUG. 17-18-19**

WEST 6th Street