

TRACTOR REPAIRS

We Have Experienced Ford Tractor Mechanics That Specialize In Ford Tractor Repairs - We Specialize In Ford Tractors And Have Since 1921 - Call For Quote.

717-949-2000



KELLER BROS.

RD 7 Box 405
LEBANON, PA

SUMMER AG DAYS EQUIPMENT SALE

Everything Reduced!

New, Demo & Used Equipment!

NEW & DEMO

- Case IH 183 Cultivator, 6 Row, 3 Pt. \$ 2,450
- Case IH 6' Rear Finish Mower \$ 1,395
- New Idea 5212, 12' Disc Mower Conditioner \$15,500 (+cash disc.)
- New Idea 3622 Manure Spreader, 220 Bushel w/Endgate \$ 5,500 (+cash disc.)
- Gehl 1560 Forage Blower, 1000 PTO (Demonstrator) \$ 2,500
- Gehl 1800 Round Baler, 4x5 Bales \$12,500 (+cash disc.)
- Gehl 2170 Mower Conditioner, 9'3" (Demo) \$ 9,595 (+cash disc.)
- Gehl 264 Rotary Rake, Pull Type 10' (Demo) \$ 3,195
- Bush Hog Disc Mower

USED FARM TRACTORS

- IH 284, 30 H.P. w/Mower \$ 3,900
- IH 284, 4WD, 30 H.P. Low Hours \$ 8,900
- IH 1086, cab, 2WD, rebuilt TA \$15,000
- Case 1410, cab, 80 H.P. \$ 8,800
- Oliver 1550, gas, WFE \$ 2,900

SKID STEERS/BACKHOES

- Case 480E Loader Backhoe, 2WD, Cab, Low Hours ('86) \$19,900
- Case W14 Wheel Loader, Cab, Good Condition ('84) \$24,000
- Case D130 Backhoe For Skid Steer (New) 10.5' Special \$ 5,900
- Case 1840 diesel \$10,500
- Case 1845 gas \$ 5,800
- IH 3200B Skid Steer, gas \$ 2,900
- Bobcat 610, gas \$ 2,900
- JD 510 Loader Backhoe \$14,500

HAY & FORAGE

- IH 600 Forage Blower \$ 2,450
- Niemeyer 9' Pull Type Tedder \$ 895
- NH 488 Haybine \$ 1,500
- NH 489 Haybine \$ 1,395
- NH 489 Haybine \$ 1,900
- JD 1327 Discbine \$ 5,000
- Hesston 1014 Haybine \$ 995
- NH 315 baler w/thrower \$ 4,695
- NH 273 Baler w/thrower \$ 2,495
- New Holland 25 forage blowers \$ 595
- New Holland 1495 self-propelled, gas \$ 4,495
- Gehl HA900 Hay Head, 6 Ft. \$ 695
- Gehl TR690, 2RW row crop \$ 595
- New Idea 456 round baler, 5x6 \$ 2,795

MISCELLANEOUS

- Hydraulic Lift Gate For Truck \$ 400
- MF 52, transport disk, 12' \$ 495
- Brillion 9 tooth chisel plow, hi clearance \$ 1,095
- New Idea 323 corn picker, 1 row \$ 2,295
- JD 8350 grain drill, 18x7 w/grass seed and fertilizer \$ 2,795
- IH 800 corn planter, 4 RN-reduced \$ 2,500
- Ag Tech 665 loader for small diesel tractor \$ 1,195
- Kidd, small bale chopper, 3 pt.
- Dual wheels for IH 66 series, 18.4x34 \$ 275
- GMC, V6, diesel engine, overhauled \$ 1,995
- Martin 1678 Scavenger \$ 2,400
- NI 360, endgate, 150 bu. \$ 2,300
- NI 3626 endgate, 260 bu. \$ 3,500

A.L. HERR & BRO.

Park Ave., Quarryville, PA 17566
(717) 786-3521
We Ship Parts U.P.S.

ZETOR

FINEST EUROPEAN ENGINEERING & QUALITY

FARM TRACTORS

52 HP TO 162 HP



Visit Us At Ag Progress Days Aug. 17, 18 & 19

- 23 HP Diesel 4WD Articulated \$8,995
- 35 HP Diesel 2WD \$9,495
- 52 HP Diesel 2WD \$11,995
- 62 HP Diesel \$14,995
- 77 HP Diesel 4WD \$19,995

SPECIAL

New ZETOR Manure & Lime Spreader. 30' Spreading Width. Handles Solid & Semi-Solid Liquid Manure, Wet Lime. Carrying Capacity 5 1/2 Tons - 400 Bushels. Hydraulic Endgate, Hi-Flotation Tires. Immediate Delivery. BARGAIN PRICE \$6,800

ANDERSON TRACTOR SALES, INC.

Front End Loader Specialists

336B South Main St Shrewsbury PA 17355
400 Broadnuth Lane Long Green MD 21540
717-235-0213 • 235-5483 • Toll Free 1-800-457-5705

The Ideal Lift And Carry Machine.

BOBCAT 7753 LONG-WHEELBASE SKID STEER LOADER



bobcat



Excellent lift height, dump angle and reach for loading trucks. The new lift-arm design also allows good visibility from the operator's cab to the Bob-Tach and attachments

- 1700 Lb. Rated Operating Capacity
- 46 HP Kubota Liquid-Cooled Diesel Engine

GRUMELLI FARM SERVICE, INC.

See Salesmen:

Don Fichtner
Clarence Herr
Tony Grumelli

Quarryville, Pa.
717-786-7318



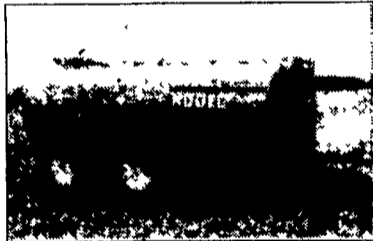
bobcat

QUALITY EQUIPMENT - DEPENDABLE SERVICE A Trusted Name For 20 Years

HOULE

LIQUID MANURE SPREADER

5 YEAR AXLE, HUB AND UNDER CARRIAGE WARRANTY



WITH FLOTATION TIRES TO MINIMIZE SOIL COMPACTION

MODEL SHOWN: 4800 US GALLONS WITH 28Lx26 FLOTATION TIRES

- Exterior finish: epoxy primer and urethane paint.
- Available with inside epoxy coating including a 10 year warranty against rust out.
- Size of Tank: 2350 - 2700 - 3150 - 3600 - 4250 - 4800 and 5350 US gallons.
- We also manufacture truck mount models
- Unique shape of tank offering greater resistance to stress related fractures.
- Low profile tank for maximum visibility and stability.
- "V" shape bottom for more complete clean out.
- Pump bearing housing assembly built with tapered roller bearings in oil bath protected by 3 greaseable seals.



LIQUID MANURE PUMPS

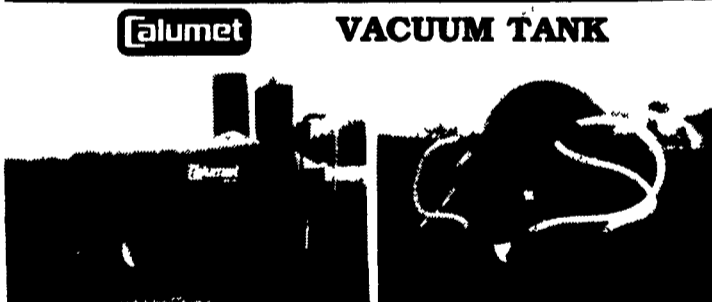
- Available in 6 versions for inground or above ground tanks as well as lagoon storage areas.
- Excels as a stationary P.T.O. driven pump to agitate and transfer manure with straw and hay
- Agitation-up to 18,000 G.P.M. with moveable propeller.

Calumet

SPREADER TANKS

- 1500-5000 Gal.
- Heavy Duty Undercarriage w/5 Year Warranty
- 10 Year Tank Warranty

Available With Rear Slinger Or Front Mount Pump



Calumet

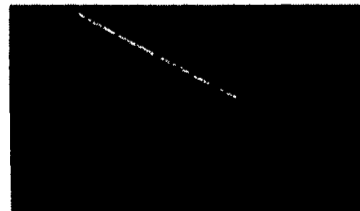
VACUUM TANK

- 1500 to 5000 Gal.
- 10 Year Tank Warranty
- 4 Shank Rear Injector

- Commercial Duty Shut-Off And Vac Pump
- 28 Ply Flotation Tires

HOULE

32' TRAIL PUMP FOR DEEP LAGOON



Fastest agitation by the nozzle located over the heavily settled manure. Constant homogenization of bottom sediments by the propeller displacing up to 18000 G.P.M.

- Controls hydraulically operated from tractor seat
- Horizontal nozzle operating radius: 330°
- Vertical nozzle use: 60°
- Horizontal pump allowing to pump more slurry

- Hydraulic hinged trailer frame mounted on flotation tires
- Possibility to maintain propeller at crust level.

- Filling pipe with standard tripod or with front tractor mounted stand for faster set up.
- Recommended HP: 70 to 120 HP on 540 R.P.M. — 180 H.P. minimum on 1000 R.P.M.

See Us At AG PROGRESS DAYS

Imperial Calumet Industries - Located on West 6th Street

SNOOK'S EQUIPMENT

RD 3, Box 84
Mifflinburg, PA
17844

Your Complete Liquid Manure Equipment Dealer For 18 Years!

Daily U.P.S. Parts Service
717-966-2736
Ask For Ernest or Dean