

## Leinbach's Shippensburg Produce Auction

(717)532-5511

Shippensburg, PA

Average Prices Of #1 Produce

August 5-August 11

Open 10 a.m. Mon. thru Sat.

Report Supplied by Auction

APPLES: EARLY VARIETIES

2.50-6.50 ¼ BU.

BEANS: GREEN 7.00-15.00 ¼ BU.,

YELLOW 7.00-10.00 ¼ BU., MACHINE

PICKED 6.00-11.00 BU., LIMA

10.00-14.00 ¼ BU.

BLUEBERRIES: 8.00-16.00 12 PINT

FLAT.

BLACKBERRIES: 4.00-9.00 12 PINT

FLAT.

CABBAGE: 5.00-8.00 50 LBS.

CANTALOPES: SM.-MED. .35-1.00

EACH, MED. TO LARGE .85-1.60.

CORN: WHITE 1.50-3.50 DOZ., BI-

COLOR & YELLOW 1.25-3.00 DOZ.

CUCUMBERS: 4.00-8.00 ¼ BU.

EGGPLANT: 4.00-6.50 ¼ BU.

NECTARIES: 3.00-10.00 ¼

PEPPERS: MEDIUM TO LARGE

6.00-11.00 1 1/9 BU.; SMALL 2.00-5.00;

RED AND YELLOW 10.00-14.00 1 1/9

BU.; HOT 4.50-7.00 ¼ BU.

PICKLES: LARGE 4.00-8.00 ¼ BU.;

SMALL 8.00-14.00 ¼ BU.

PEACHES: SMALL TO LARGE

2.50-9.00 ¼ BU.

PLUMS: RED 3.00-6.00 ¼ BU.,

LARGE 6.00-10.00 ¼ BU.; YELLOW

SMALL TO LARGE 4.00-9.50 ¼ BU.

POTATOES: RED AND WHITE

4.00-6.00 ¼ BU.

RED BEETS: 6.50-11.00 15-BUNCH

BU.

SQUASH: PATTYPAN YELLOW

AND WHITE 3.00-5.50 ¼ BU., YEL-

LOW 1.00-3.50 ¼ BU., YELLOW ZUC-

CHINI 1.00-3.50 ¼ BU., GREEN

2.00-7.00 ¼ BU.

TOMATOES: RED AND YELLOW

MEDIUM TO LARGE 7.00-15.50 25

LBS.; SMALL 2.50-6.00 25-LBS.; ITA-

LIAN 3.00-7.00 25-LB.

WATERMELON: SUGAR BABIES

SMALL TO LARGE .75-1.50 EACH;

YELLOW DOLLS .50-1.70 SMALL TO

LARGE; SEEDLESS SMALL TO

LARGE 1.00-2.50; SANGRIA AND

JUBILEE SMALL TO LARGE .75-3.00

EACH; CRIMSON SMALL TO LARGE

.75-3.25 EACH.

MUMS: 1.25-1.85 EACH.

STRAW FLOWERS: 1.50-2.25

BUNCH.

SALE DAYS NEXT WEEK ARE

MONDAY THROUGH SATURDAY.

## Oklahoma City Feeder Cattle

Oklahoma City, Okla.

Wednesday, August 11, 1993

ATTENTION DODGE CITY\*\* OKLAHOMA NATIONAL STOCK-YARDS WEEKLY CATTLE SUMMARY: RECEIPTS: THIS WEEK: 12,500 LAST WEEK: 10,686 LAST YEAR: 10,706.

Compared to last week: Feeder cattle and calves generally steady; exceptions noted on 700-800 lb. steers steady to \$1.00 higher and same weight heifers \$1.00 lower. Demand moderate to good with best demand for English and exotic cross cattle. Buyers more selective for kind than last week and resumed a more reasonable discount for brahma cross and plain cattle. Quality continues average to plain, end attractive; this week's supply weighted considerably more towards plain end. Weigh-ups average. Flesh conditions average to moderately thin and very attractive. Slaughter cows and bulls steady to \$1.00 higher. Demand continues good for slaughter cattle as packers make final purchases for labor day beef sales. Receipts this week 12,500; last week

10,686; last year 10,706. Supply consisted of 78% yearlings and calves over 600 lbs.; 18% calves and light yearlings under 600 lbs.; 4% cows and bulls. Prices follow with weighted average weights and prices in parenthesis.

Feeder Steers: Medium and Large Frame 1: 236 lbs. \$124.50; 300-350 lbs. (324 lbs.) \$120.00-\$122.50 (\$121.20); 350-400 lbs. (384 lbs.) \$112.00-\$112.50 (\$112.21); 400-450 lbs. (427 lbs.) \$103.00-\$115.00 (\$107.60); 450-500 lbs. (465 lbs.) \$99.00-\$108.00, load 460 lb. reputation Angus \$116.50 (\$107.51); 500-550 lbs. (532 lbs.) \$97.25-\$104.50, lot 535 lb. reputation Angus \$110.50 (\$102.79); 550-600 lbs. (580 lbs.) \$93.00-\$100.00 (\$97.19); 600-650 lbs. (635 lbs.) mostly calves \$89.00-\$95.50 (\$91.76); 650-700 lbs. (682 lbs.) \$90.00-\$96.10 (\$93.67); 700-750 lbs. (726 lbs.) \$89.75-\$93.85 (\$91.74); 750-800 lbs. (778 lbs.) \$86.25-\$93.00 (\$89.88); 800-850 lbs. (823 lbs.) \$85.10-\$90.00 (\$87.98); 850-900 lbs. (873 lbs.) \$83.50-\$88.60 (\$86.18); 900-950 lbs. (920 lbs.) \$83.50-\$86.25 (\$84.49); 950-1000 lbs. (973 lbs.) \$81.25-\$84.85 (\$83.38). Holstein Steers: Large Frame 2: 446 lbs. \$83.00; 595 lbs. \$78.50; 650 lbs. \$76.10; 800-850 lbs. (834 lbs.) \$69.35-\$72.75 (\$71.65).

Feeder Heifers: Medium and Large Frame 1: 250-300 lbs. (257 lbs.) \$112.00-\$112.50 (\$112.37); 300-350 lbs. (337 lbs.) \$96.50-\$97.00 (\$96.69); 350-400 lbs. (373 lbs.) \$95.85-\$98.00 (\$96.66); 400-450 lbs. (420 lbs.) \$90.50-\$95.00 (\$93.40); 450-500 lbs. (473 lbs.) \$90.00-\$95.00, couple lots Limousin \$97.50-\$102.50 (\$94.59); 500-550 lbs. (526 lbs.) \$88.50-\$95.00 (\$92.28); 550-600 lbs. (574 lbs.) \$87.75-\$93.50 (\$89.90); 600-650 lbs. (617 lbs.) \$86.00-\$90.75, lot Limousin \$95.00 (\$89.13); 650-700 lbs. (681 lbs.) \$84.10-\$88.75 (\$86.20); 700-750 lbs. (720 lbs.) \$83.00-\$86.10 (\$84.78); 750-800 lbs. (768 lbs.) \$82.85-\$85.35 (\$83.98);

Lancaster Farming, Saturday, August 14, 1993-A15

800-850 lbs. (830 lbs.) \$79.25-\$83.00 (\$81.87); 850-900 lbs. (869 lbs.) \$80.10-\$82.35 (\$81.59); 908 lbs. \$79.35. Slaughter Cows: Y.G. 1-4: Utility average dressing \$49.00-\$52.50, Cutters \$47.00-\$50.00; high dressing Utility \$52.50-\$55.00, Cutters \$50.00-\$53.50. Canner and lo. Cutters \$40.00-\$43.50. Slaughter Bulls: Y.G. 1, 1200-1950 lbs. average dressing \$59.50-\$62.75, high dressing \$64.25-\$67.25.

## New Wilmington Livestock Auction

New Wilmington, Pa.

Monday, August 9, 1993

Report Supplied by PDA

CATTLE 198.. PDA .. Supply included 44 head feeder cattle .. sl. cows steady to stronger. STEERS: one Choice 1050 lbs. 69.00. HOLSTEINS: one Select 62.00, couple Standard 55.00 & 58.00. HEIFERS: couple Select 60.00-64.00. COWS: Breaking Utility and Commercial 48.00-51.50, one 54. 00, Cutter and Bon. Utility 46.00-51.00, couple 52.50, Canner and Low Cutter 40.00-46.75. Shells down to 29.00. BULLS: few Yield Grade No. 2 1045/2010 lbs. 53.75-57.75. FEEDER CATTLE: few Large Frame No. 2 210/320 lbs. steers 78.00-91.00; couple Large No. 1 215/345 lbs. heifers 81.00 & 93.00, few Medium 435/775 lbs. 55.00-67.00, few Large No. 2 540/665 lbs. 59.00-66.50; few Medium Frame No. 1 550/925 lbs. bulls 54.00-74.00. CALVES 220.. VEALERS: Standard and Good 70/100 lbs. 42.00-58.00, Utility 50/65 lbs. 18.00-27.50. FARM CALVES: No. 1 Holstein bulls 120/130 lbs. 130.00-134.00, 95/115 lbs. 156.00-163.00, 80/90 lbs. 97.50-146.00, No. 2 90/115 lbs. 80.00-130.00; No. 1 Holstein heifers 85/105 lbs. 170.00-195.00, No. 2 75/105 lbs. 85.00-142.00. Beef cross 75/125 lbs.

bulls and heifers 77.50-225.00 mostly 100.00-155.00.

HOGS 284...Barrows and gilts uneven. BARROWS AND GILTS: US 1-2 220/250 lbs. 46.00-46.60, 1-3 220/260 lbs. 45.35-46.00, few 2-3 240/260 lbs. 42.00-45.25, 1-3 170/195 lbs. 41.00-45.00. SOWS: US 1-3 375/505 lbs. 35.00-38.00, one 2-3 575 lbs. 37.00. BOARS: few 305/775 lbs. 28.00-30.25, few lightweights 185/275 lbs. 30.00-33.00.

FEEDER PIGS 23..US 1-3 30/55 lbs. 24.00-38.00, few 2-3 30/40 lbs. 22.50-27.50.- per head.

SHEEP 140...Spring sl. Lambs: lot High Choice and Prime 80 lbs. 78.00, Choice 80/125 lbs. 55.00-69.00, 50/80 lbs. 60.00-75.00, Good and Choice 40/55 lbs. feeder lambs 52.50-57.50. Slaughter Sheep: 24.00-34.00, few down 15.00.

GOATS 9...few Large 26.00-57.50, couple Medium 15.00 & 30.00, one Small 27.50, few Large Kids 22.50-28.00.-all per head.

## New Holland Horses

New Holland Sales Stables

New Holland, PA

Monday, August 9, 1993

Report Supplied By Auction

300 HEAD. MARKET STRONGER. WORK HORSES: 835.00-985.00. DRIVING HORSES 530.00, 1100.00, 1300.00. RIDING HORSES 550.00-960.00. REGISTERED RIDING 825.00-1115.00. KILLERS LIGHTWEIGHT 475.00-615.00; HEAVYWEIGHT 680.00-875.00. PONIES: 135.00-350.00. LARGE PONIES 415.00-560.00. COLTS 310.00-465.00.

Old Fashioned Hard Work.

Old Time Values.

# Old Guard Insurance.

Old Guard Mutual Insurance Company has been insuring Pennsylvania, Maryland

and Delaware farms, homes and businesses since 1896.

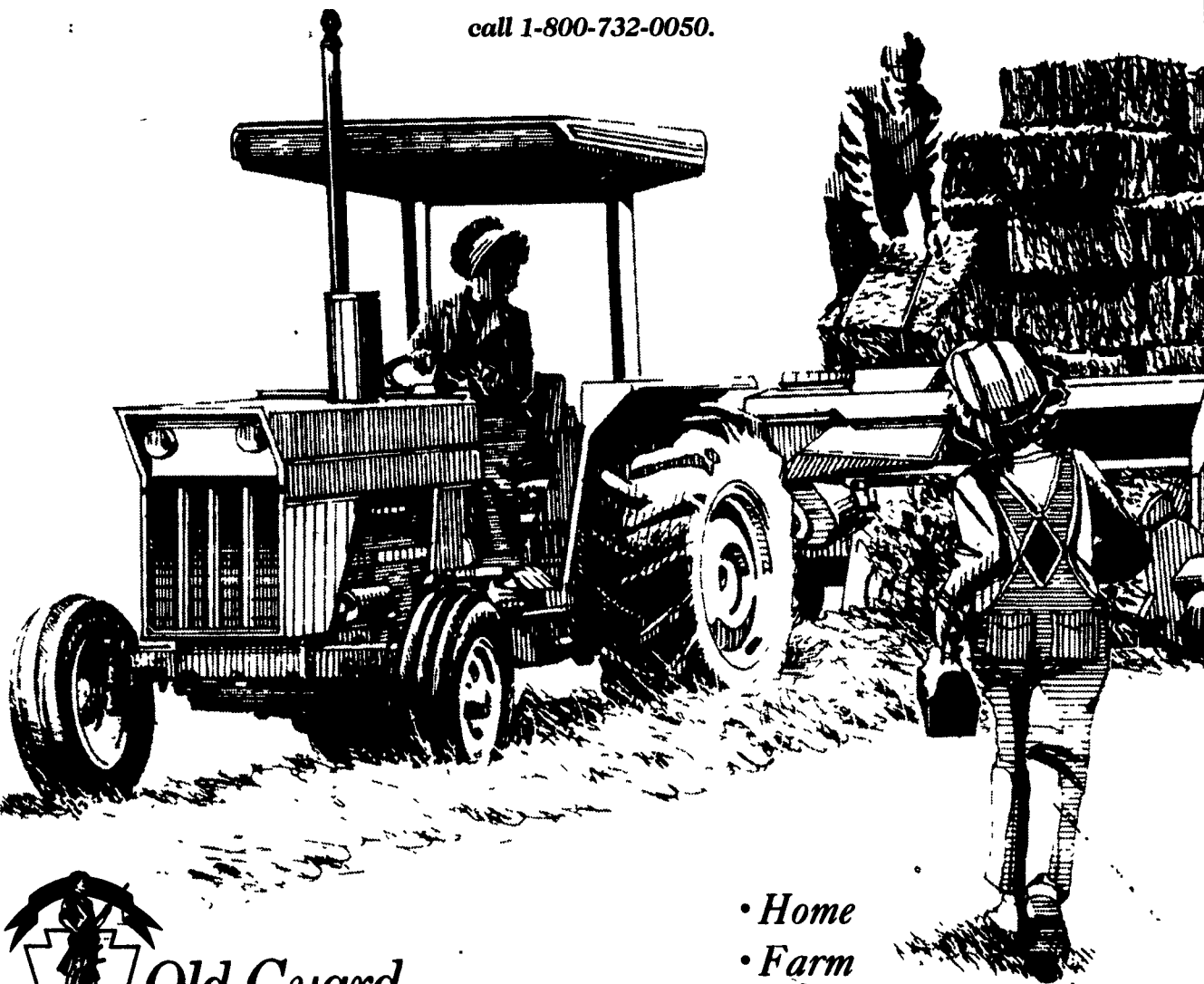
We understand what your hard work and values are worth,

and offer unique loss prevention programs and no-nonsense policies

designed to protect that investment. For more information

or the name of the representative closest to you,

call 1-800-732-0050.



Old Guard

MUTUAL INSURANCE COMPANY

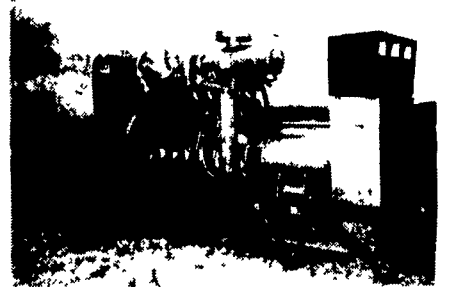
2929 Lititz Pike

P.O. Box 3010, Lancaster, PA 17604

- Home
- Farm
- Business
- Automobile



MARTIN MACHINERY



## GENERATORS

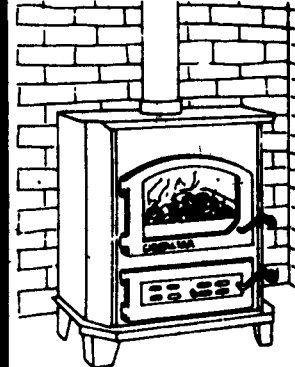
- Sales ★ Service ★ Rentals
  - ★ Complete Generator Systems
  - ★ PTO ★ Portables ★ 2-1600 KW
- "We Service It If You Have It And Sell It If You Need It"

34 W. Mohler Church Rd. Ephrata, PA 17522

Tel: 717-738-0300

Fax: 717-738-4329

GIBRALTAR ENERGY PRODUCTS



- Coal Burning
- 15 yr. Warranty
- 600 lbs. of Steel & Cast Iron
- Made In The U.S.A.

BOWMAN'S STOVE & PATIO INC.

Hearth Products • Gas Grills • Casual Furniture

906 E. Main St. (Rt. 322) Ephrata, PA 1 Block East of Rt. 222

(717) 733-4973 1-800-642-0310

Mon., Tues., Wed. 10 to 6; Thurs., Fri. 10 to 6; Sat. 10 to 4