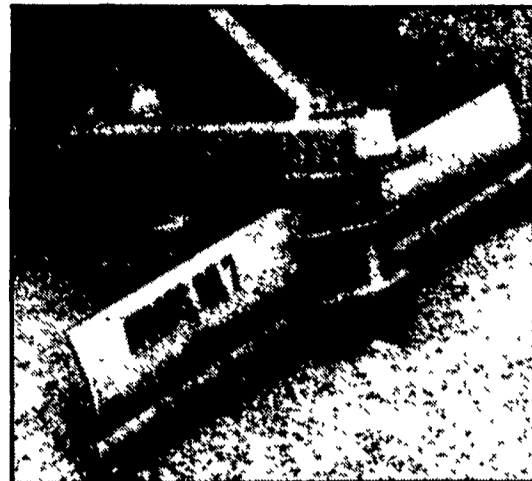


# DO IT ALL WITH WOODS



with **WOODS**  
multispindle  
mowers/cutters

Batwing cutters are engineered by Woods for heavy-duty commercial-type mowing and shredding. Hinged wing sections offer uniform mowing on level ground or rolling terrain with 540 or 1000 rpm PTO tractors.



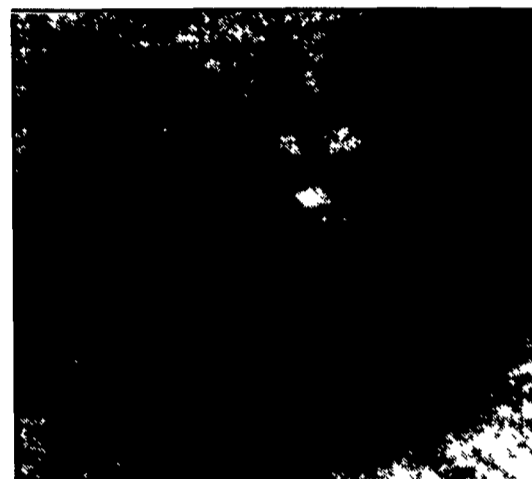
with **WOODS**  
standard  
duty  
rear  
blades.

Woods models RB6/7 designed for tractors rated up to 40 hp or 4000 lbs. gross weight... Change angle, tilt, offset and reverse.. for scraping, ditching and plowing.



with **WOODS**  
compact  
utility  
backhoes!

Woods models 650 and 750 utility backhoes can out perform others their size (and larger) digging footings, irrigation ditches, drainage ditches, wiring trenches, and for landscaping... come in soon for a demonstration.



with **WOODS**  
rear mount  
box  
scrapers

Woods box scrapers are available in light duty, Model BB4, BB5 and BB6... and medium duty Models BB600 and BB700. Choice of 4 ft., 5 ft., 6 ft. and 7 ft. cutting edge for tractors rated 20 to 60 hp.



with **WOODS**  
rear mount  
lawn  
mowers!

If your tractor is in the 12 to 40 horsepower range there's a Woods RM for you. Choose 4 ft., 5 ft., and 6 ft. cutting swaths... In belt drive models RM48, RM59 and RM306... or gear drive models RM4000, RM5000, and RM600.

**See The Complete Line Of Woods Products At Ag Progress Days!**

• Located On West 4th Street



- |   |   |   |   |   |   |
|---|---|---|---|---|---|
| <b>BANGOR IMPLEMENT</b><br>Bangor, PA<br>215-588-5924                     | <b>N.H. FLICKER &amp; SONS, INC.</b><br>Maxatawney, PA<br>215-683-7252                                  | <b>KELLER BROS. TRACTOR CO.</b><br>Lebanon, PA<br>717-949-6501              | <b>ROBERT E. LITTLE, INC.</b><br>Zieglerville, PA<br>215-287-9643       | <b>NICARRY EQUIPMENT CO.</b><br>(Route 2 Box 2008)<br>Reading, PA<br>215-926-2441 | <b>C.H. WALTZ SONS, INC.</b><br>Williamsport, PA<br>717-435-2921              |
| <b>BELMONT FARM</b><br>Glyndon, MD<br>301-833-9091                        | <b>GRUMELLI'S FARM SERVICE</b><br>Quarryville, PA<br>717-786-7318                                       | <b>KELLER'S FARM MACHINERY, INC.</b><br>Quakertown, PA<br>215-536-4046      | <b>M.M. WEAVER &amp; SONS, INC.</b><br>Leola, PA<br>717-656-2321        | <b>NICHOLS FARM EQUIP.</b><br>Bloomsburg, PA<br>717-784-7731                      | <b>WENGERS' FARM MACHINERY INC.</b><br>Myerstown, PA<br>717-866-2135          |
| <b>B. EQUIP., INC.</b><br>Waynesboro, PA<br>717-762-3193                  | <b>HINES EQUIPMENT</b><br>Creason, PA<br>814-886-4183   | <b>KERMIT K. KISTLER</b><br>Lynnport, PA<br>215-298-2011                    | <b>MANOR EQUIPMENT INC.</b><br>Sinking Spring, PA<br>215-678-0928       | <b>PIKEVILLE EQUIP. INC.</b><br>Oley, PA.<br>215-987-0277                         | <b>CLARENCE WILSON &amp; SONS</b><br>Kimberton, PA<br>215-933-3561            |
| <b>ECKROTH BROS. FARM EQUIP.</b><br>New Ringgold, PA<br>717-943-2131      | <b>R.S. HOLLINGER &amp; SON, INC.</b><br>Mountville, PA<br>717-285-4538                                 | <b>LAMB'S FARM MACHINERY</b><br>Thorndale, PA<br>215-269-2676               | <b>MESSICK FARM EQUIP., INC.</b><br>Elizabethtown, PA<br>717-367-1319   | <b>SHUEY SALES &amp; SERVICE</b><br>Ono, PA<br>717-865-4915                       | <b>C.J. WONSIDLER BROS.</b><br>Quakertown, PA<br>215-536-1935<br>215-536-7523 |
| <b>NORMAN D. CLARK &amp; SON, INC.</b><br>Honey Grove, PA<br>717-734-3682 | <b>C.B. HOOBER &amp; SON, INC.</b><br>Intercourse, PA<br>717-768-8231                                   | <b>LANCASTER FORD TRACTOR, INC.</b><br>Lancaster, PA<br>717-569-7063        | <b>MIFFLINBURG FARM SUPPLY, INC.</b><br>Mifflinburg, PA<br>717-968-3114 | <b>STRALEY FARM SUPPLY, INC.</b><br>Dover, PA<br>717-292-4443<br>717-292-2631     | <b>Rt. 309 &amp; 100</b><br>New Tripoli, PA<br>215-767-7811                   |
| <b>ERB &amp; HENRY EQUIP. INC.</b><br>New Berlinville, PA<br>215-367-2169 | <b>INCH EQUIPMENT CO.</b><br>McAllisterville, PA<br>717-463-2191  | <b>LAWN CARE OF PA.</b><br>Martinsdale, PA<br>215-445-4541                  | <b>MORRIS INT'L., INC.</b><br>Everett, PA<br>814-652-6101               | <b>THOMAS POWER EQUIPMENT</b><br>Avondale, PA<br>215-268-2181                     | <b>Oley, PA</b><br>215-987-6257   |
| <b>FARMERSVILLE EQUIPMENT, INC.</b><br>Ephrata, PA<br>717-354-2150        | <b>KAUFFMAN FARM SUPPLY</b><br>Mt. Pleasant Mills, PA<br>717-539-4571<br>Belleville, PA<br>717-935-2131 | <b>S.G. LEWIS AND SON</b><br>West Grove, PA<br>215-868-8440<br>215-869-2214 | <b>NESLEY EQUIPMENT CO.</b><br>Pottstown, PA<br>215-469-6391            | <b>TRACTOR PARTS CO.</b><br>Bloomsburg, PA<br>717-784-9350                        | <b>YORK CO. FARM IND., INC.</b><br>Emigsville, PA<br>717-764-6412             |
|   |   |   |   |   | <b>ZIMMERMAN FARM SERVICE</b><br>Bethel, PA<br>717-868-4114                   |