

**18' Scott Silage & Grain Body w/7 gauge floor and other options, ready to mount your chassis or ours.**

**1989 International S 1954 DT466, 210 HP, 6-speed, 33,000 GVW, 111,000 miles, new tires, 165" CA**

**1981 Ford F600 w/Telsta bucket, 34' working height, 110V work outlet**

**1978 International S1500, Cummins PT 270 big cam w/jake brake, 6-speed, lo hole, Fuller trans., 18 front, 44 rear, PS, 11R 24.5, 19' steel dump, ready to work.**

**Scott Silage & Grain Bodies In Stock**

**SUNNY ACRE SALES**  
RD #2 Tyrone, PA 16686  
(814) 742-7303

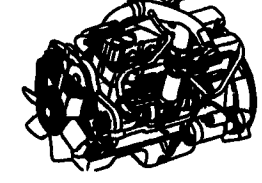
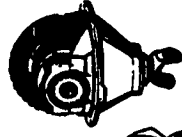
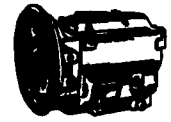


P.O. Box 148, Thomdale, PA 16878 USA  
Just off Exit 28 PA Turnpike - On Business Rt. 30

**WM. COHEN & SONS, INC.**

TRUCK PARTS & RECONDITIONED PARTS  
TEL (215) 269-1298 • FAX (215) 269-0787

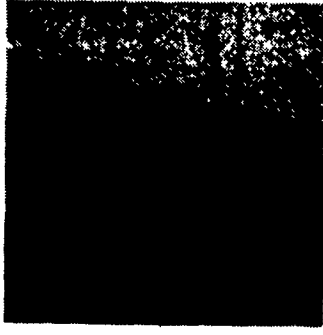
Open Mon.-Thurs. 7:00 AM-6:00 PM  
Friday 7:00 AM-4:30 PM  
Over 40 Years of Service



- Used & Rebuilt Engines
- New & Rebuilt Transmissions
- New & Rebuilt Rears
- Used & Rebuilt Steering Gears

- New & Used Hoods
- Used Trucks For Sale

Various Tanker Trailers Available For Water Storage

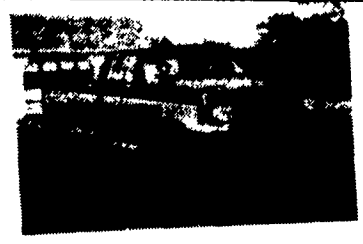


• 18' Grain Body, Dumps, Barn Doors w/Chutes  
Excellent Condition

**BEARTOWN HYDRAULICS**  
MAJOR FACTORY DISTRIBUTOR & SERVICE

Hose Assemblies While-U-Wait  
Jacks - Cylinders - Motors - Valves - Pumps - Seals - Pallet Trucks

Open Mon.-Fri. 8-6, Sat. 7-12 or Call After Hrs.  
Rt. 322, Midway Bet. Honey Brook & Blue Bell  
(717) 354-5649 FAX (717) 355-0033



**1991 Ford F250 XLT Lariat, 4x4, Super Cab, 351 EFI, Auto, PS, PB, PW, PDL, Cruise, Tilt, Air, AM-FM, 8800 GVW, 16,000 Miles, Blue & Silver With Bal. of Factory Warranty.**  
**\$17,900**

**A&J Auto Sales**

798 E. Main St. Rt. 322 East,  
Ephrata, PA 17522  
717-733-2873

**REEDMAN LEASING**  
**2300 CARS-TRUCKS**

\*All Cars Below Equipped With Auto Trans, Air Cond, PB, PS, & Stereo.

\*'93 NEW JAGUAR VANDENPLAS \$461.00  
Per Month For 24 Months. Closed End Lease.  
Stock #20280 & Cyl VIN PC84290 MSRP \* \$59,110  
Total Of Monthly Payments \$11,544  
With \$4000 Down

\*'93 NEW CORVETTE COUPE \$372.00  
Per Month For 36 Months. Closed End Lease \$1k  
#15182 & Cyl VIN P8118220 MSRP \* \$35,820 Total Of Mthly  
Payments \$12,392 With \$3000 Down

\*'93 NEW LINC MARK VIII \$369.00  
Per Month For 24 Months. Closed End Lease.  
Stock #98584 & Cyl VIN PY784900 MSRP \* \$38,147  
Total Of Monthly Payments \$8,886.00 With \$3000  
Down 11" Per Mile Over 30,000

\*'93 NEW TOWN CAR SIGN \$399.00  
Per Month For 24 Months. Closed End Lease.  
Stock #98104 & Cyl VIN PY80607 MSRP \* \$36,601  
Total Of Monthly Payments \$9,576 With \$3200  
Down 11" Per Mile Over 30,000 Miles

\*'94 NEW LINC CONTINENTAL \$327.00  
Per Month For 24 Months. Closed End Lease.  
Stock #98294 & Cyl VIN PY808282 MSRP \* \$34,475  
Total Of Mthly Payments \$7848 With \$3000 Down  
11" Per Mile Over 30,000 Miles

\*'93 NEW CHRYSLER NY SALON \$246.00  
Per Month For 36 Months. Closed End Lease.  
Stock #98188 & Cyl VIN PD20393 MSRP \* \$20,120  
Total Of Mthly Payments \$2256. With \$2000 Down

\*'93 NEW DODGE STEALTH \$264.00  
Per Mth For 24 Months. Closed End Lease. \$1k  
#98044 & Cyl VIN PY08793 MSRP \* \$21,728 Total Of Mthly  
Pymts \$2604 With \$2000 Down Total Of \$5,000 MI

\*'93 NEW MERC GRAND MARQUIS GS \$296.00  
Per Month For 24 Months. Closed End Lease.  
Stock #91046 & Cyl VIN PK622112 MSRP \* \$23,607  
Total Of Mthly Payments \$7176 With \$2100 Down

\*'93 NEW MERC SABLE LS \$230.00  
Per Month For 24 Months. Closed End Lease.  
Stock #94813 & Cyl VIN PA600433 MSRP \* \$20,079  
Total Of Monthly Payments \$5200 With \$2000 Down  
11" Per Mile Over 30,000 Miles

\*'93 NEW PLY VOYAGER \$225.00  
Per Month For 36 Months. Closed End Lease. Stock  
#74373 & Cyl VIN P2210538 MSRP \* \$15,787 Total  
Of Mthly Payments \$2100 With \$1500 Down

**SHOP REEDMAN BEFORE YOU BUY LEASE OR RE-LEASE A CAR OR TRUCK**

**FLASH!** If You Still Have Payments On Your Present Leased Car Or Truck We Would Like To Bid On Your Lease For A New Vehicle, Individual Lease, Or Company Leasing.

\*'93 NEW T-10 BLAZER 4x4 4 Dr \$266.00  
Per Month For 36 Months. Closed End Lease \$1k/  
T-5537 & Cyl VIN P2210538 MSRP \* \$20,980 Total Of  
Mthly Pymts \$2,645 With \$1800 Down

\*'93 NEW COUGAR XR7 \$287.00  
Per Month For 24 Months. Closed End Lease. Stock  
#93823 & Cyl VIN PH68849 MSRP \* \$16,743 Total  
Of Mthly Payments \$6888 With \$1500 Down

\*'93 NEW CHEV LUMINA 4 DR \$189.00  
Per Month For 36 Months. Closed End Lease.  
Stock #34424 & Cyl VIN P1148844 MSRP \* \$15,986  
Total Of Mthly Payments \$6804 With \$2000 Down

\*'93 NEW OLDS CUTLASS SUPREME S \$260.00  
Per Month For 36 Months. Closed End Lease.  
Stock #20280 & Cyl VIN PD347045 MSRP \* \$19,310  
Total Of Mthly Pymts \$2290 With \$2000 Down

**Closed End Leases**  
First Monthly Payment Plus A Security Deposit Equal To One Monthly Payment Is Required Upon Delivery. Lessee May Have The Option To Purchase The Car At Lease End At A Price To Be Negotiated With The Dealer At Lease Inception. At The End Of The Lease If You Do Not Exercise Your Option To Buy You Will Pay A Mileage Charge Of 10¢ Per Mile For Each Mile In Excess Of 15,000 Miles Per Year Plus The Costs Of Any Excess Wear Or Tear.

\* Price Includes All Cost To Be Paid By A Consumer, Except For Licensing Costs, Registration Fees & Taxes.

CALL 215-757-4961  
Ask For Reedman Leasing Dept.  
Reedman Rte 1 Langhorne Pa.



**DODGE CHRYSLER PLYMOUTH**

**National Award Winning Dealership**

"Ask A Friend About Us"

Route 422, Robesonia, 9 Miles West Of Reading

(215) 693-5855 1-800-800-2623



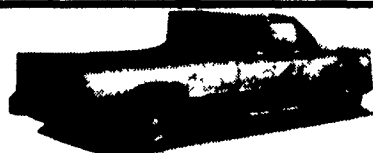
**1986 ISUZU TROOPER**  
#209114, 4 Cyl., 5 Spd., AC, Cass., Cruise, Cast Wheels  
Call Bob Kern



**1985 FORD F-150 XLT**  
#192-642, V6, 4 Spd., AM/FM Cass., Mag Wheels, Truck Cap  
Call Greg Krick



**1989 FORD F150**  
#193-836, V6, 5 Spd., AM/FM, RS-Window, Cap  
Call Dave Mehle



**1982 FORD F250 CLUB**  
#193-950, V8, Auto, Running Boards, Dual Tanks, Fog Lamps, Bug Shield  
Call Marcia Kulp



**1992 FORD RANGER**  
#292-440, 5 Spd., AC, 4 Cyl., Sliding Rear Window, Bed Mat, Tool Box, Bug Shield  
Call Keith Klaytor



**1992 FORD F150 CUSTOM**  
#19422, Red, V6, Auto w/Overdrive, Cap, Cast Wheels  
Call Bob Kern



**1986 JEEP CHEROKEE**  
#193156, Blue, Auto, AC, V6, Roof Rack, Running Boards  
Call Greg Krick



**1986 JEEP COMMANCHE**  
#193735, 4 Cyl., 5 Spd, Cass., 1 Owner, Mag Wheels  
Call Dave Mehle



**1989 BRONCO II XLT**  
#193241, V6, 5 Spd., AC, Cruise, Pwr. Windows & Locks, Roof Rack, Sport Wheels  
Call Marcia Kulp



**1989 NISSAN PICK-UP**  
#193467, 4 Cyl., 5 Spd., R/Sliding Window, AM/FM Cass., New Tires & Mag Rims - Extra Set Of Rim & Tires Available  
Call Keith Klaytor



**1983 DODGE RAMCHARGER 4X4**  
#193367, Royal SE, AC, V8, Auto, Good Inspection, Running Boards  
Call Bob Kern



**1984 DODGE RAMCHARGER 4X4**  
#193336, New Inspection, Royal SE, V8, Auto, AC, Cruise, Tilt, Running Boards  
Call Greg Krick



**1979 BLAZER**  
#193388, Local Owner, 4x4, New Inspection, AC, Auto, V8, Running Boards  
Call Dave Mehle



**1989 DODGE RAM VAN**  
#19411, Local Owner, V8, Auto  
Call Marcia Kulp



**1992 DODGE RAM 150**  
#193654, Mag Wheels, Super LE, Low Miles, V8, Auto, AC, Cruise, Tilt, Pwr. Windows/Locks  
Call Keith Klaytor



**1990 POWER RAM**  
#193814, V8, Auto, Cruise, Tilt, PW, PDL, Running Boards, Cast Wheels, Cap, Bugshield, New Tires  
Call Bob Kern



**1982 FORD F150**  
#CA84935, 393-834 V6, Blue, 4 Spd., Cass., Truck Cap  
Call Greg Krick

**TRUCKS TRUCKS TRUCKS**