

POLE BUILDINGS, TRUSSES

GARAGES - COMMERCIAL BUILDINGS - HORSE BARNs - STORAGE BUILDINGS

For FREE ESTIMATES Call

MUSSER & ASSOCIATES, INC.

245 Fetterville Rd.
East Earl, PA
17519



1-800-331-1875 717-354-7561

John Koser's

FOR YOUR HOME IMPROVEMENT NEEDS

LOCATED NORTH OF ELIZABETHTOWN
OPEN MON.-FRI. 8 to 6; SAT. 8 TO 3

- Kitchen Cabinets
- Plywood & Waterboard
- Asphalt Roofing Shingles
- T-1-11 Siding
- GP Insulation
- Railroad Ties
- Shutters
- Replacement Windows
- GP Vinyl Siding

Tub & Shower Unit
\$150

717-367-0283

INSULATION



Double Bubble-
28¢/Sq. Ft.

Discount
For Large
Orders!



717-776-6951

KW Pole Buildings KW



- Horsebarns • Riding Arenas • Livestock Facilities
- Implement Sheds • Storage Buildings • Garages
- ★Quality Built, Custom Engineered; Agricultural, Commercial and Residential Buildings.
- ★20 Yr. Painted Steel Siding & Trims With A Large Selection Of Colors.
- ★T-1-11, Cedar Board & Batten And Vinyl Siding Also Available.
- ★Custom Designed Dutch Doors & Horse Stalls.

Call Us For A Free Estimate - Fully Insured

KW Construction

Myerstown, PA

(717) 933-8294



Conestoga Building Supply POLE BUILDINGS AND SUPPLIES



- * Complete Building Packages
- * In House Professional Engineering Assistance
- * Sealed Prints For MD, PA, NJ, DE

Brown, Green, Black & Red Steel Siding
\$1.20/Lineal Foot

For A Free Estimate Or Brochure: Call

1 (800) 544-9464 202 Orlan Road
New Holland, PA **(717) 354-2613**

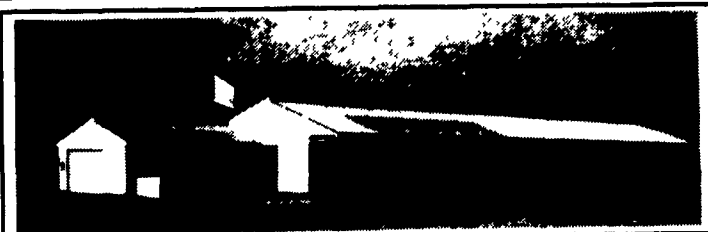
GLENWOOD METAL FORMING

500 Glenwood Dr., Ephrata, PA 17522

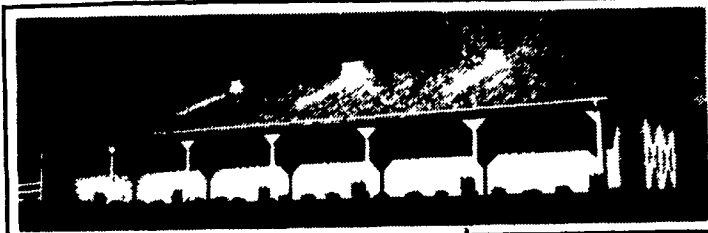
FAX

717-733-9590 - 1-800-552-9856 - 717-735-4888

AGRI-INC. Custom Built Farm Buildings Designed To Your Needs



HEIFER AND CALF RAISING FACILITY



HORSE STALL BARN

Let Our Experience Work For You -

- Dairy Complexes And Replacement Stock Facilities
- Horse Stall Barns And Riding Arenas
- Workshop And Machinery Storage Buildings
- Timber Column Buildings For Light Commercial



AGRI-INC. The Construction Professionals

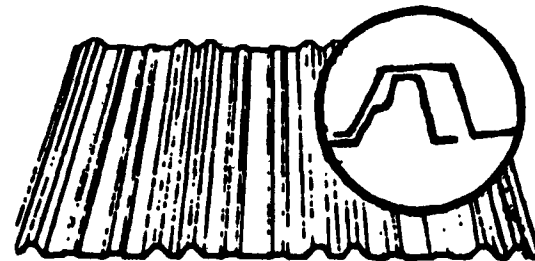
151 E. Farmersville Rd., Ephrata, PA 17522
• (717) 354-4271

Serving The Agricultural Industry For Over 25 Years



MANUFACTURERS OF METAL ROOFING AND SIDING PANELS

WITH CUT TO LENGTH LINE IN 36" WIDTH



- | | |
|------------------------|----------------------------|
| 29 Ga. Galvanized | 29 Ga. Painted |
| 26 Ga. Galvalume | 26 Ga. White |
| .024 Mill Finish Alum. | 29 Ga. 304 Stainless Steel |

24 Ga. Standing Seam Roofing In Galvanized - Galvalume & Painted Commercial & Residential Panels

5 & 6" K-Style Alum. Seamless Gutters

- Pre-Hung Thermo Doors
- Agri Built Windows
- Ridgeolators
- Roofing Nails & Screws
- Sliding Door Track Trolley & Hardware
- Ridge Vents