



RESTAURANT EQUIPMENT & AUCTION

Surplus Equipment of Major Restaurant Chain
MONDAY, AUGUST 9 - 12 NOON

1051 Hummell Ave., Lemoyne, PA.
Directions: I-83 to Lemoyne exit, (this is the first exit after crossing Susquehanna River, on West Shore of Harrisburg, turn left on Hummell Ave.) - Signs Posted.
Terms: Cash or Approved PA Check.

1000's of quality items from a firm known to only buy the best! (4) Hobart and US Berkel Slicers, HOBART 20 Qt. Mixer, Hobart Power units, Hobart Accessories, Taylor Milk Shake machine, (4) Henny Penny Fryers, Robot Coupes, Toasters, Many Stainless Steel Tables, Gas and Electric Ranges, Electric Grills, Amana Microwaves, (7) Salad Bars - 11' & 12', furniture, Five Tons of Metro Shelving!

100's of Decor Lights, Chandeliers, Exterior lights, Pictures and Decor Items, Coffee Makers, Baker's Racks, Many SS Pots, Pans, Sheet Pans, Steam Pans, Small Appliances - Bunn Coffee, Food Warmers, Lettuce Choppers, Toasters, Timers - So Much More!

Walk-in Cooler, Menu Boards, 3 hp Med. Condensing Unit, Chicken Roaster. "Many small items - appliances, stainless steel for caterers or any food service."

Contact Auctioneer for full listing, Will Fax or Mail

Sale For:
Davenport's Inc.

Mark Baranowski —
Mark Yelk, AU 2933
(717) 657-2317 (717) 697-1490

Public Auction Register

Closing Date Monday 5:00 P.M.
of each week's publication

FRI. SEPT. 10 - 1:30PM, State Graded Feeder Pig Sale. Located At Carlisle Livestock Market, Inc., Exit 13, South Off I-81, Left Onto Alexander Spring Road. 717-249-4511.

FRI. SEPT. 10 - 7PM, Valuable Real Estate. Located On East Side Of Blue Ball Along Rt. 322 At 1160 Divi-

sion Highway, East Earl Twp., Lanc. Co., Pa. Terms By, Norman N. & Ruth E. Troyer, Robert E. & Jeffrey Martin, Aucts.

SEPT. 10, 11 & 12 - Nittany Antique Machinery Association, Inc. 19th Annual Show. Penns Cave, Centre Hall, Pa. 5 Miles East on Rt. 192.

SAT. SEPT. 11 - Pa. Yorkshire Asso. Fall show & sale - Lebanon Area Fairgrounds. Harry H. Bachman, auct.

SAT. SEPT. 11 - 9AM John Deere Tractor, Farm Equip. for Gary & Sharon Bender, 2412 Harrisburg Pike, Lancaster, Pa. to be held at Norman Sauder Auction Newport & White Oak Rd., Manheim, Pa. John D. Stauffer, Auct.

SAT. SEPT. 11 - 9AM Antique Ford Cars, Fordson 1928 Steel wheel tractor, pony wagon/market sled, lge. coll. antique furniture, rosewood case melodian, Victorian parlor sets, oak grandfathers clock, adv. signs, collectable primi-

tives, dishes/glassware & tools. Location: 18 mi. S. of Bloomsburg, 4 mi. N. of Ringtown, 5 mi. N. of Brandonville off Rt. 339 east to Mt. Zion Lutheran Church along Trout Lane, Zion Grove, Schuylkill Co., Pa. By Mr. & Mrs. Wm. Pyle. Doug/Tim Houser, aucts.

SAT. SEPT. 11 - 10AM 17 Acre Farmette & Farm Equipment For Norman & Dorothy Sauder. Located 1769 Newport Road, Manheim, Pa. John D. Stauffer, Aucts.

SAT. SEPT. 11 - 10AM, Real Estate 10.5 Acres, Mountain Farmette, Formerly The Home Of Famed Naturalist, Euell Gibbons.

Located From Harrisburg Travel North On Rt. 322 At Thompsettown, Turn Right Onto Rt. 333, Continue Approximately 4 Miles Then Turn Left On Rt. 235 And Continue To Troxelville, Turn Left Onto Timber Rd. And Proceed 1 Mile. Auction On Right. Kenneth E. Hassinger & Neil A. Courtney, Aucts.

SAT. SEPT. 11 - 10:30AM, Approx. 110 Acre Farm With Large Brick House. Located 6 Miles North Of East Berlin, Along Rt. 194 Or 7 Mile South Of Dillsburg, Pa., Along Rt. 194. Seller, Edward I. Livingston Estate. Rentzel's Auction Service.

SUN. SEPT. 12 - 12Noon, Restaurant Equipment, Quality Consignments From The Area's Fine Restaurants, Mobil, 932 N Front St., Wormleysburg, Pa. Mark Baranowski, AU 2570. (717) 657-2317.

MON. SEPT. 13 - 2PM 48 Acre Farm, Rapho Township. Located at 2911 Hoosier Rd., Rapho Twp., Lanc. Co. Pa. For Irvin M. Forry & Mary E. Forry. Horst, auct.

WED. SEPT. 15 & THURS SEPT. 16, Large Two Day Sale Of Farm Equip., Etc. At Our Sales Lot Located 6 Miles South Of Chambersburg, Pa., One Mile East Of Marion, Just East Off Rte. 81 Along Rte. 914. Owners, Jerrold And Gloria Oaks. Marion Auction Service, 5174 Horst Rd., Chambersburg, Pa. 17201.

SAT. SEPT. 18 - Real Estate, Antiques, & Household Goods. Located Along Route 897, 1 Mile E. Of Blue Ball. Sale For Clara M. Martin. Nevin Martin & Sons Auct.

SAT. SEPT. 18 - Pride of York Co. Club pigs and breeding stock - York Fairgrounds, Harry H. Bachman, auct.

PUBLIC SALE

INVENTORY REDUCTION
Monday., Sept. 6, 1993
9:00 A.M.

Located at 523 Koser Road, Elizabethtown. From Lancaster-283 west to E-town Exit, turn right on Hershey Rd. (743) to first road right (Beverly Rd.) to Koser Road left- 1/2 mile, watch for sale signs.

Lumber, windows, doors, roofing, lots of small items. Consignments welcome- any good used items, construction or farm, large or small- sold on commission. NO household appl. or junk accepted. Advertising deadline- August 25. Full listing Sept. 4.

Sale by:
JOHN KOSER

Contact:
John- 367-0283 or
Wolgemuth Auction Service
665-6684 Or 733-8192
Bob- Lic. #1534

PUBLIC AUCTION FRALEY'S ANNUAL FALL FARM MACHINERY CONSIGNMENT SALE

To be held at our farm 3 miles E of Muncy, PA along Kepner Hill Rd., Watch for auction arrows at junctions of Rts. 442 & 405. Lycoming Co.

Saturday, Sept. 18, 1993
**TRACTORS, TRUCKS,
TRAILERS, ETC., GENERAL
FARM MACHINERY, ETC.
TILLAGE, HAYING, PLANTING,
LAWN & GARDEN, ETC.**

Expecting our usual run. Plan to attend, over the last several years averaging over 90% being sold.

To consign call Auction Co. Advertising deadline is 9-4-93.

Conducted by:

FRALEY AUCTION CO.

Licensed & Bonded
RD 4, Muncy, PA 17758-7711

(717) 546-6907

VILSMEIER ABSOLUTE AUCTION

93C052

D'ANGELO BROS. INC. & OTHER AREA CONTRACTORS

B-E 30-B SUPER 60 TON CRAWLER CRANE P&H OMEGA 20 R/T CRANE, CRAWLER LOADERS & DOZERS, RUBBER TIRED TRACTOR, BACKHOE, EXCAVATOR, PAVING EQUIPMENT, DUMP TRUCKS, TRUCK TRACTORS TRAILERS, & TOOLS.

THURSDAY, AUGUST 19 - 9:30 A.M.

MONTGOMERYVILLE, PA.

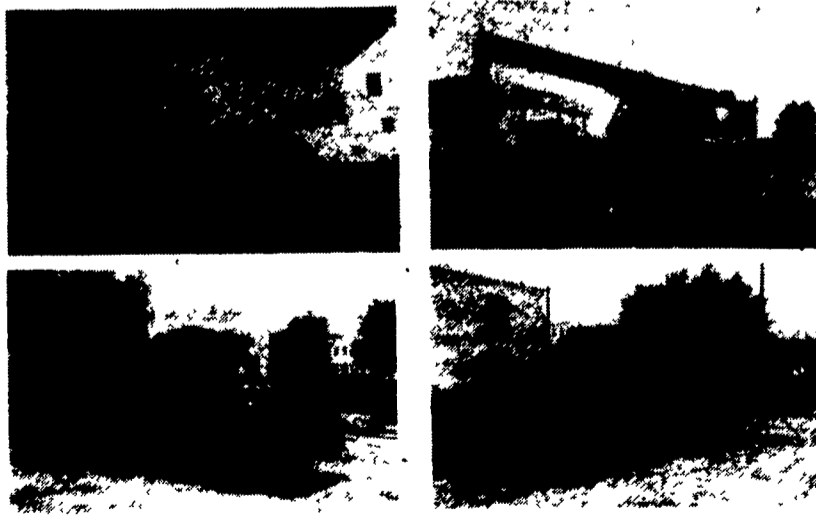
(20 Miles Northwest of Philadelphia)

NOTICE: D'Angelo Bros. Inc., a well-established Philadelphia foundation and excavating contractor since 1906, is selling items surplus to its present needs. Also, other area contractors are selling items in this sale. Everything in this sale will absolutely sell to the highest bidder regardless of price.

LOCATION: The sale will be held at the yard facility of VILSMEIER EQUIPMENT CO., Route 309, Montgomeryville, PA. Approx. 1 mile south of the Montgomery Mall and 1 mile north of the intersection of Rt. 309 & Rt. 63.

PLEASE NOTE: D'Angelo Bros. Inc. has always maintained precise maintenance records. They will be available for inspection and will pass on to the new purchaser(s).

BUYCRUS-ERIE 30B Super 60 Ton Crawler Crane (8 Hrs on U/C, 3,824 Total Machine Hrs); P&H Omega 20 Ton Rough Terrain Crane (Main Boom Cylinder & Engine Rebuilt '92); KOEHRING/BANTAM T-644 Truck Mtd Hyd. Excavator; (10) CAT 977L, 955L, 955K, & 955H - KOMATSU D578, D558-S, & D318017 - & IHC 175B Crawler Loaders; (2) CAT D8C & D8 Crawler Tractors; DYNABOE 190-4 4x4 Tractor Loader Backhoe; HUBER M5210 Motor Grader; (2) FORD 340 & JOHN DEERE Skid Steer Loaders; JAEGER JD-4 Tractor Drill; I-R 1200 cfm, Jaeger 600 cfm, & SCHRAMM 315 cfm Port. Air Compressors; LEEBOY 1000 R.T. Asphalt Paver; CASE 252 Art. Double-Drum Vib. Compactor; BOMAG 100 Tandem Vib. Roller; BUFFALO-SPRINGFIELD 5-5 Ton Tandem Roller; (2) HUBER & ESSICK 3-5 Ton Rollers; (4) 1975 MACK DM9118X Tandem Axle Dumps (Beds Completely Rebuilt (2) 3/89, (1) 1/89, (1) 2/89); 1965 MAC B618X Tandem Axle Dump; 1973 DIAMOND "T" Tri Axle Dump; (3) FORD, IHC, & BROCKWAY Single Axle Dumps; 1962 MACK B6136X Tandem Axle Truck Tractor (NEW Engine Block & Out-of-Chassis Overhaul 1/92); 1971 MACK R685ST Tandem Axle Truck Tractor; 1960 TONCO 35DDHS 35 Ton T/A Detach. Lowboy; 1965 ROGERS 35 Ton T/A Detach. Lowboy (Worked in Tandem w/1962 B Model Tractor); (7) Dump, Tag, & Van Trlrs; (2) Fuel Trucks; (2) STERLING Chain-Driven Chassis; 1966 FORD F350 S/A Welder Body Trk w/ Hobart 300 amp gas welder; FORD F600 S/A Compressor Trk w/I-R 175 cfm dsl comp; FORD F600 Cab & Chassis; 1962 GMC 1500 Sierra Pickup; 1960 CHEVY C10 Pickup; 1964 AUDI 5000 Wagon; 1979 FORD Bronco 4x4 (Under 40,000 Mi.); 1971 FORD Thunderbird 4 Dr. Sedan; FORD R.T. Tractor; 1962 BACHTOLD "Brute" Port. Hyd. Log Splitter; VERMEER 1600 Port. Chipper Shredder; DITCH-WITCH M422 Walk-Behind Trencher; (4) 1968 EZ-GO 4-Wheel Golf Carts; LE TORNEAU Double-Drum Sheepsfoot Tow-Type Roller; Tools; Copiers; (20) MOTOROLA Micron 2-Way Radios.



**ABSOLUTE AUCTION - EVERYTHING SELLS AS-IS WHERE-IS
TO THE HIGHEST BIDDER REGARDLESS OF PRICE**

TERMS: COMPLETE PAYMENT SALE DAY IN CASH OR GUARANTEED FUNDS ONLY.

INSPECTION: Mon. thru Wed., August 16 thru 18, from 8:00 a.m. to 5:00 p.m., and sale day starting at 7:30 a.m.

FINANCING: Servlease Corp. specializes in leasing all types of construction equipment and trucks for most industries. Bidders must be prequalified at least 5 days in advance. For complete leasing information, call: James M. Maiorino (215) 538-1753; Glenn Button (717) 346-7708; or 1-800-848-7624.

PA Auction License: RH-000021-L

**VILSMEIER
AUCTION CO., INC.**

1-800-BID-N-BUY
Rt. 309 Montgomeryville, PA 18936
215-699-5833