

# Work Is Fun When Your Neighbor Is There To Help

**EVERETT NEWSWANGER**  
Managing Editor

The new building will double the herd size for the Denlinger partnership.

As quarter-ton beams were hoisted into the bottom of the new barn, the neighborly spirit was evident. Ten or 12 men working together shared the load as these beams were jockeyed into place. Later, trusses that had been prefabricated by hand in the old barn floor were hoisted into place on the upper story as farmers turned carpenters swarmed over the uplifted rafter supports to hammer home the nails that keep the frame in place.

This old fashioned way of socia-

lizing has many rewards. The Denlingers appreciated the help and the lower building cost. The workers received a large dinner at lunch time. And everyone who helped will be able to say he or she helped build "that new barn" when they drive past the farm lane. The day of labor didn't cost the individual very much, but when you put everybody's labor side by side, thousands of dollars are saved.

A lesson could be learned by our debt-ridden society from these neighborly farmers who gathered this week for some fun along Strasburg Pike. And sooner or later,

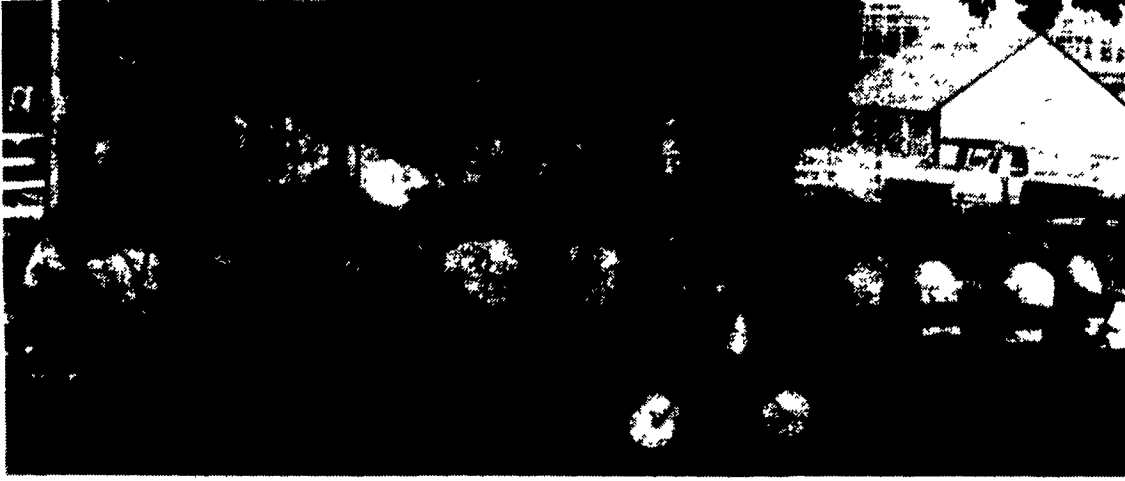
those who are helped in this way find the opportunity to pass on their benefits to others who need a help-

ing hand. Neighborliness breeds neighborliness, and it's a nice circle to be in.

**STRASBURG PIKE** (Lancaster Co.)—When is work play? At least, when is work fun?

The answer: when your neighbors, family, and friends get together for a barn raising. And the work was fun, Thursday, when 60 farmers "of all denominations," got together at the Log House Farm of Ken and Bev, and Mike and Corinne Denlinger.

The occasion was the expansion of the dairy farm to add room for 40 cows to the the existing bank barn.



A big dinner at lunch time for the working men.



Raising the roof on the new dairy barn.



Farm name posted.

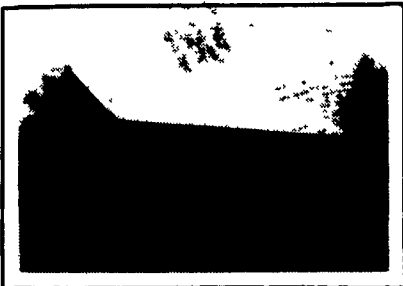


Take your pick.

**Brecknock Builders**

QUALITY • CRAFTSMANSHIP • COMMITMENT

337 Panorama Dr.  
Denver, PA 17517



**MORTISE & TENON**  
\*NEW & RESTORATION



**ALL STEEL**  
\* COMMERCIAL  
\* LIGHT INDUSTRIAL  
\* AGRICULTURE



**EQUESTRIAN**  
\* RIDING ARENAS  
\* STABLES, ETC.

FROM DESIGN TO COMPLETION, OUR GOAL IS CUSTOMER SATISFACTION. WE OBTAIN THAT BY QUALITY CONSTRUCTION WITH COMPETITIVE PRICES. CALL FOR MORE INFORMATION  
**(215) 445-7897**

**FOR SALE**

25x48  
Greenhouse  
Best Offer  
over \$500.00

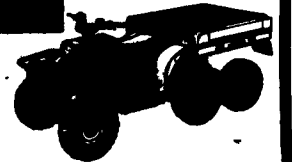
Menno S. Beller  
718 Vintage Rd.  
Christiana, Pa 17509



**AIR TOOLS  
IN STOCK!**  
Please write  
for prices.

Prompt UPS Service  
**Beller's  
Pneumatics**  
718 Vintage Road  
Christiana, PA 17509

Is Your Business  
Picking Up?



Then you need a workhorse like our Big Boss 4x6. Its cargo bed alone can carry up to 650 pounds. Add to that a front rack that carries 75 pounds, a rear hitch that tows 850 pounds, its PVT transmission and air-cooled 244cc engine, and you've got a vehicle that's all business.

**WARNING:** ATVs can be hazardous to operate. These are full-size machines designed to be ridden only by adults age 18 and older. For your safety: Always wear a helmet, eye protection, and protective clothing. Be particularly careful on difficult terrain. Polaris recommends that all ATV riders take a training course. For safety and training information, see your dealer.

**LeRoy's Snowmobiles**  
R.D. #1, Box 32 • Highpoint Rd.  
Cochranville, PA 19330  
**215-593-6280**



**POLARIS**  
EQUIPMENT