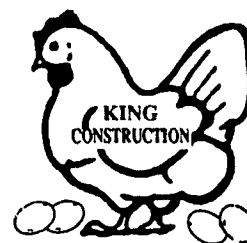


Thanks & Congratulations

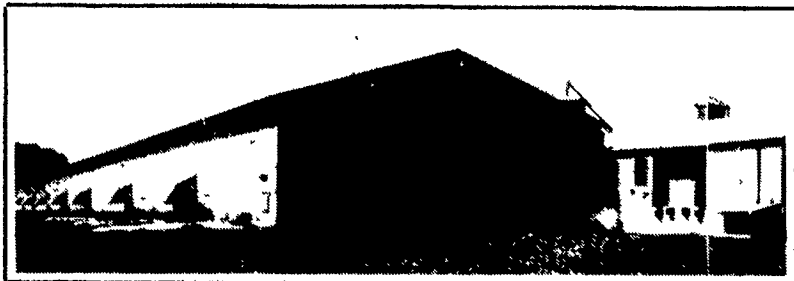
to

DONALD & MIRIAM BURKHOLDER

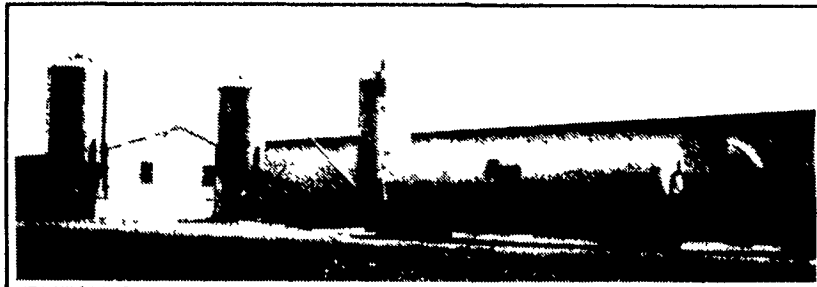
Bernville, PA



On their all new **CHORE-TIME**, 108,864 bird caged layer system with **CHORE-TIME** **ULTRAFLO**® feeding system. Their **CHORE-TIME** system features 4 tier 504' long **DURACAGE**™



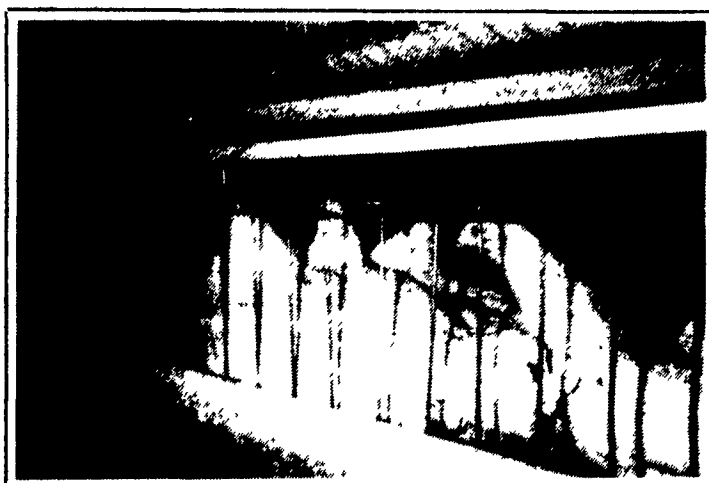
54'-8"x 532' high rise building with 36'x 50' egg packing and cooler room



3-24 ton **CHORE-TIME** storage bins-one bin on reliable J-STAR scale for recording daily feed consumption.



CHORE-TIME 4 high **DURACAGE**™ with **CHORE-TIME** variable speed rubber finger egg collectors. **CHORE-TIME** dual auger fill system.



LUBING (Combi) nipple waterers raised above cage top to avoid false triggering. **LUBING** nipple waterers with all stainless valves have a 10 year warranty.



DIAMOND 150 case farm packer with egg cart hoist



It's
Another
ULTRAFLO®
By
CHORE-TIME®

Layer Contracts Available.

For free estimates and more information contact:

LARRY HORST - office 1-800-673-2580, home (717) 656-7799

Equipment By

Buildings By



NORTHEAST AGRI SYSTEMS, INC.

Flyway Business Park
139A West Airport Road
Lititz, PA 17543

Ph: (717) 569-2702

STORE HOURS: Mon.-Fri.
7:30 to 4:30
Sat. 8:00 to Noon
24 Hr.-7 Day Repair Service

1-800-673-2580



KING CONSTRUCTION CO.

601 Overly Grove Road

New Holland, PA 17557

(717) 354-4740