

Penn State Installs Fencing

UNIVERSITY PARK (Centre Co.) — Staff in Penn State's Department of Dairy and Animal Science have installed state-of-the-art fencing at the Haller Farm facility. Developed in Australia, spider fencing delivers electricity across a durable super-fine wire.

This permanent fencing powers a portable fence in the form of a hand-held reel of white tape (or orange for contrast against snow). By walking in a circle behind the cattle and unwinding the tape, a single worker can herd cattle into another pasture or even a chute or truck ramp.

"Cattle quickly learn to respect the single strand of electrified tape and rarely challenge it," said Richard F. Todd, assistant beef and forage herd manager and resident fencing expert. "The tape can be draped over easily placed temporary fence posts to quickly adjust pasture size or to allow temporary grazing of crop residues such as corn stalks." Todd said the new fencing's flexibility requires fewer people to manage livestock and permits improved forage growth and utilization.

A summary of research and demonstration activities on beef cattle improvement, fencing and facilities, pasture management, and winter feeding systems is available from Penn State's Department of Dairy and Animal Science.

The 19-page publication describes fencing and animal handling facilities, plant species and forage utilization systems, and genetic and production improvement programs at Penn State's Haller Farm. The report traces the 20-year development and evaluation of fencing, including facilities such as corrals and working chutes, various pasture species, winter shelter and feeding, and cattle breeding and selection.

Herd production levels currently average 650 pounds or more for 205-day, non-creep-fed weaning weight, 95 percent weaned calf crop, slaughter weight at 14 months of age for steers of 1,200 pounds, with two thirds of the steers grading Choice or higher.

The report was compiled by Lowell L. Wilson, professor of



Richard F. Todd, assistant beef and forage herd manager and resident fencing expert at Penn State's Haller Farm, demonstrates state-of-the-art fencing recently installed at the facility.

animal science; Peter J. LeVan, operations manager of Penn State's beef herds; and Richard F. Todd.

Copies are available for \$2 each or 10 for \$12 by calling (814) 863-3663 or writing Lowell Wil-

son, The Pennsylvania State University, 324 Henning Building, University Park, PA 16802.



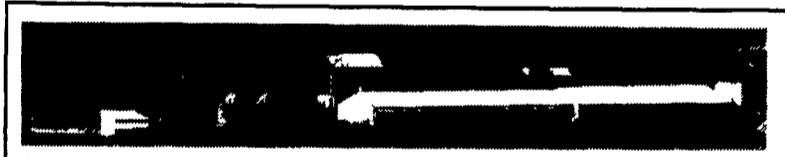
TRI-COUNTY

CONFINEMENT SYSTEMS, INC.

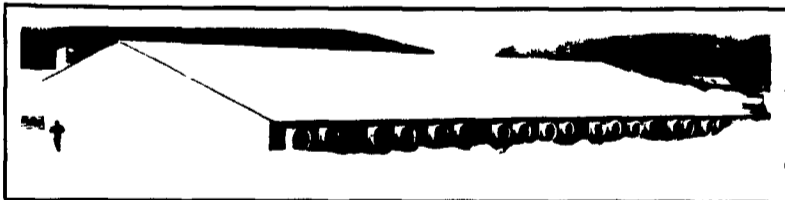
THE LEADER IN \$ VALUE \$ For Your Dollars

FOR MORE FARM INCOME

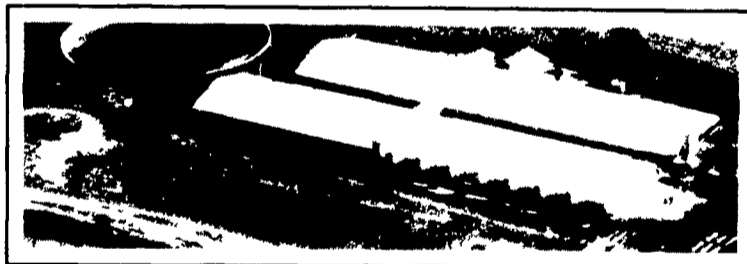
There are many options available. Our experienced staff can help you decide what may be best for you.



250 Sow Feeder Pig Unit



3000 Head 5 Room Finisher



1200 Sow Feeder Pig Unit

THE NEWEST IN QUALITY PRODUCTS FOR YOUR NEEDS

- **TRI-COUNTY** Stalls, Crates, Penning, Curtain Machines
- **Edstrom** Cooling Systems, Nipple Waterers
- **Cumberland** Adult Turkey Feeders, Broiler Feeders
- **KANE** Heat Mats, Creep Feeders
- **Agri Plastics** Bins, Augers, Feeders, PVC Products
- **SBM** INC. Stainless Steel Heaters
- **DOSMATIC** Medicators
- **AIRSTREAMER** Fans, Ventilation Controls
- **aerotech** Fans, Ventilation Controls
- **VAL WATERING SYSTEMS** Poultry Drinkers
- **Fancom** Computer Ventilation Controls
- **HOOPER TRI-BAR** Flooring
- **BUILDING MATERIALS** Lumber, Aluminum, Steel, Doors, Windows
- **CAM-AGRI** Stainless Steel Heaters
- **Filter-Eeze** Plastic Flooring
- **BOSS HOG FLOORING** Woven Wire Flooring



TRI-COUNTY

CONFINEMENT SYSTEMS, INC.

608 E. Evergreen Rd.

Lebanon, PA 17042

717-274-3488

Hours
Mon-Fri 7:00 to 4:30
Sat 8:00 to 12:00

WE SHIP UPS DAILY

