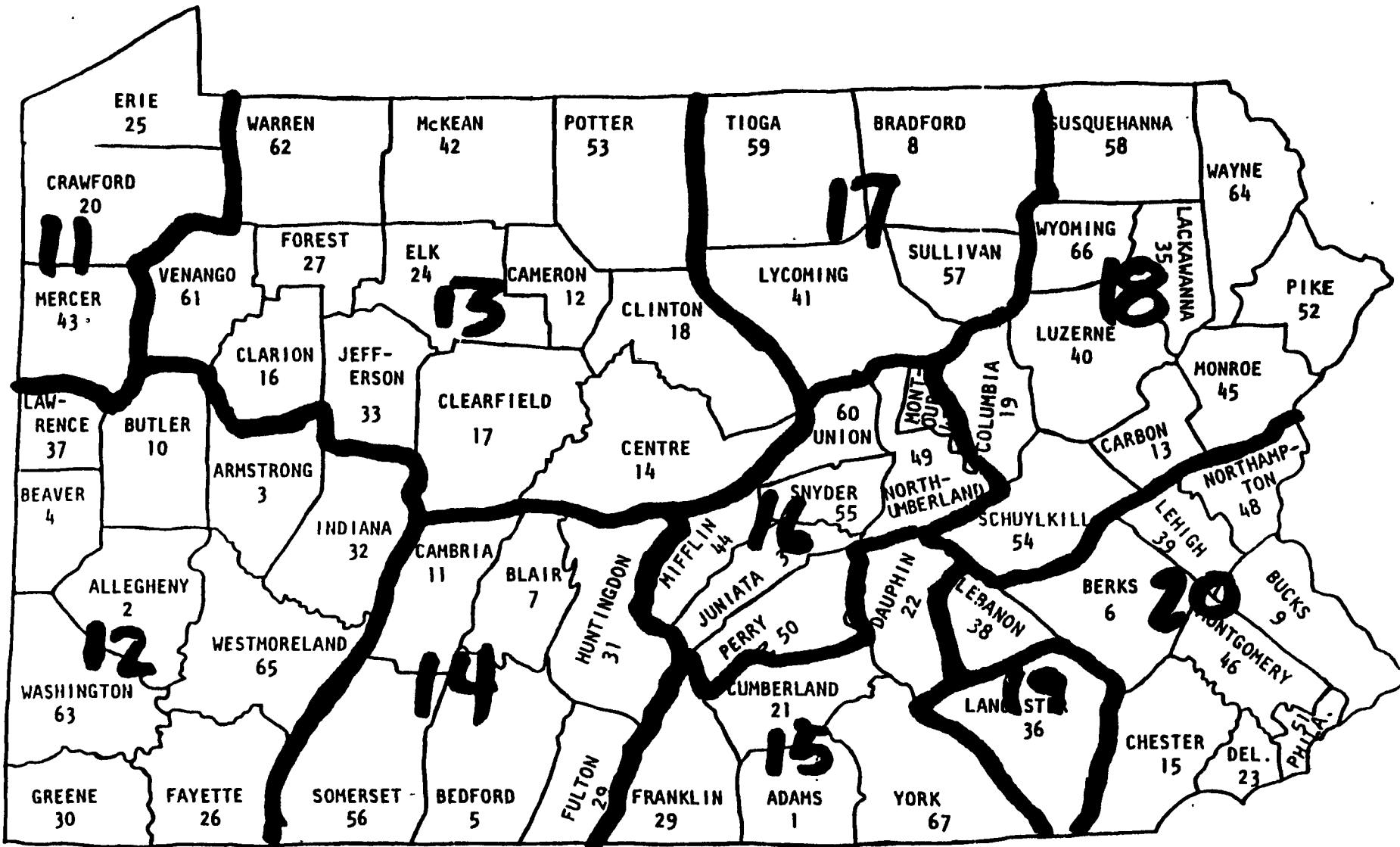


# Pennsylvania Districts & Area Chairman

The volunteer chairpersons for the Dairy of Distinction program are, David Dowler, District 11; Wally Jackson, District 12;

Susan DuJour, District 13; Janet & David Hileman, District 14; Norman Coons, District 15; Robert & Bernice Gable, District

16; Larve Thomas, District 17; Allen Roszel, District 18; Lisa Risser, District 19; and Russell Rooks, District 20.



22222222 22222222 22222222 22222222 22222222 22222222



## A Special Salute To Pennsylvania Dairy Of Distinction Award Winners

### HEADLOCKS



THREE SIZES AVAILABLE TO MEET ALL YOUR CATTLE HANDLING NEEDS EXTRA HEAVY CONSTRUCTION FEATURES

- \* 1.9" O.D. High Yield Tube Top & Bottom Frame
- \* 1" structural pipe on verticals & locks
- \* All yokes lock on individual catches, no strain on control rod
- \* Yoke stabilizer on large sizes
- \* Unique design allows more head room
- \* Neck bar can be removed or adjusted without tools
- \* Individual lock on each yoke for holding one or more animals
- \* No loose pins or parts to get lost in manure or drop in pit

## PAUL B. ZIMMERMAN, INC.

Call or Write For Additional Information And Your Nearest Dealer

295 Woodcorner Rd. Litz, PA 17543  
1 Mile West of Ephrata  
Phone: 717-738-1121

22222222 22222222 22222222 22222222 22222222 22222222

### YOUR QUALITY SHOWS!

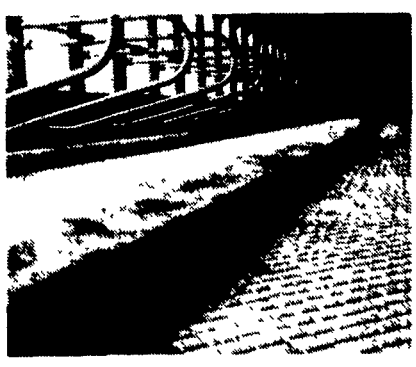
**Congratulations Award Winners**



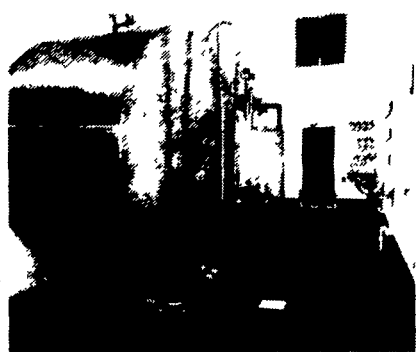
## Our Quality Shows Too!

THINKING ABOUT BUILDING OR EXPANDING A DAIRY FACILITY  
"Use Our Experience - From Design to Completion"

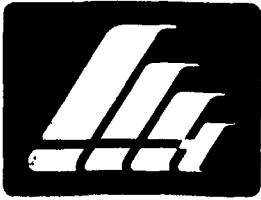
We at Triple H Construction believe our experience with agricultural projects insures our fulfillment of your needs. In an agricultural application, we are the one company you can absolutely trust to handle every step of construction.



← Frey Dairy Conestoga, PA  
598 Cow Freestall Facility



→ Harpster Dairy Spruce Creek, PA  
Milk House to Double 40 Rapid Exit Parallel Milking Parlor.



717-738-2142  
1-(800)-874-7531

**TRIPLE H Construction**  
430 Springville Road Ephrata, PA 17522

Custom Builders of Dairy, Horse, Storage, Residential And Commercial Buildings.