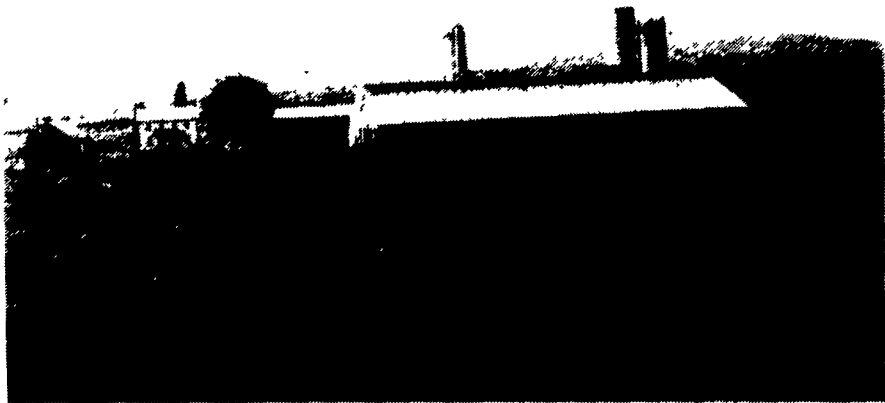
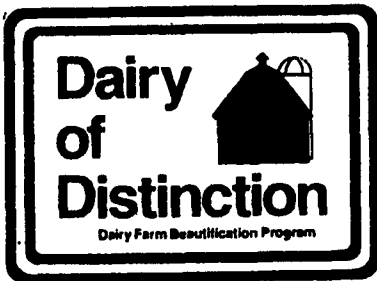


1993 Dairy Of Distinction Farm Photographs

PERRY



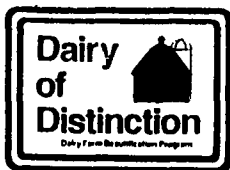
Kretzing Farm

Perry and Adelaide Kretzing's new Dairy of Distinction, a Century farm, has been in Adelaide's side of the family since 1889. Along with sons Allen and Vance and daughter Colleen, they farm 450 acres and have 170 Registered and grade Holstein cows that average over 19,000 lbs. of milk. In addition, they have 200 heifers and calves. The cows are housed on a slatted floor barn and milked in a fast exit double 10 milking parlor that was installed four years ago. The farm is located west of Loysville in Perry County.



Loy Farm

The farm of Robert and Linda Loy has been in the family since 1941. Their father Dean still helps on the farm, as well as their three children, Josh, Becky, and Angle. The farm, located west of Loysville on Rt. 274 in Perry County, houses 65 Holstein milk cows and another 65 young stock. The herd average is 20,300 lbs. of milk. They farm 300 acres and raise corn, barley, oats, and soybeans.



CONGRATULATIONS TO ALL PENNSYLVANIA DAIRY OF DISTINCTION AWARD WINNERS.

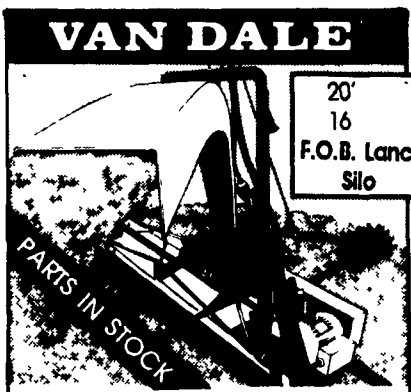
THIS IS THE BEST HAYLAGE SILO UNLOADER



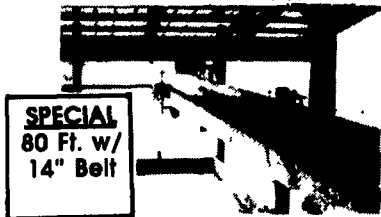
RING DRIVE

BUILT TO LAST!

Check Your Winches, Cables & Tripods For Safety!



Lancaster BRAND FEEDING SYSTEM EQUIPMENT



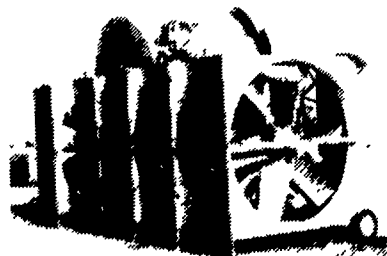
SPECIAL 80 Ft. w/ 14" Belt

Reel Auggie

2000 Series

MIXER Models 2120 & 2170

Ventilate Your Cow Barn



48" - 6 Blade Fan Electric, Gas or Hydraulic



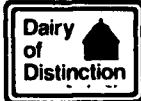
SPECIAL PRICE \$130

18 Cow Hay Rack

Lancaster Silo Co., Inc.

2008 Horseshow Rd. • Lancaster, PA • (717) 299-3721

CALL TOLL FREE 1-800-770-3721



F.M. BROWN'S SONS, INC.

Manufacturer of High Quality Feeds Balance for Your Dairy Farms Needs



Salutes Dairy of Distinction Award Winners For Promoting the High Quality Standards of

MILK

