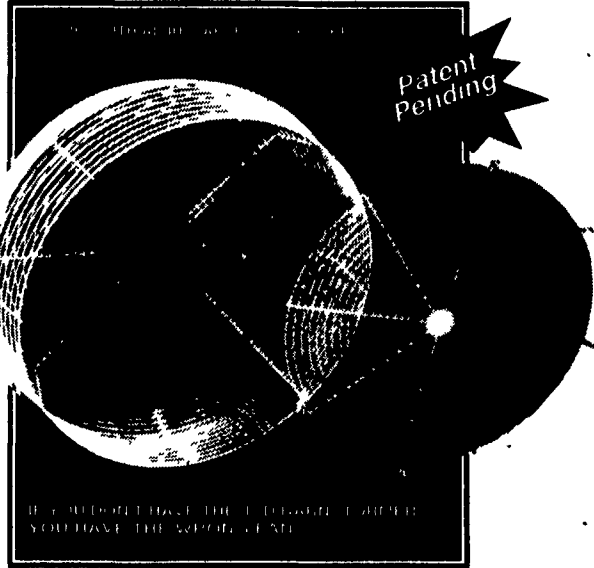


**Congratulations**  
**To The 1993 Dairy Of**  
**Distinction Award Winners!**

**J&D Manufacturing**  
**BARNSTORMER**

**AIR CIRCULATION AT IT'S BEST**

NEW 1993 CONVEX SHAPE DESIGN



**BARNSTORMER AIR PATTERN**  
 Floor to ceiling mixing and dispersing under, over and around your livestock for maximum benefits

**EXCLUSIVE OPEN FRONT**  
 Hinged front simply unhooka and pull open for easy access. Special Patented Design allows more air flow and a much wider air pattern.

**12" BARNSTORMER 2000 - CFM:**  
 Ideal for small buildings, nurseries and calf barns.

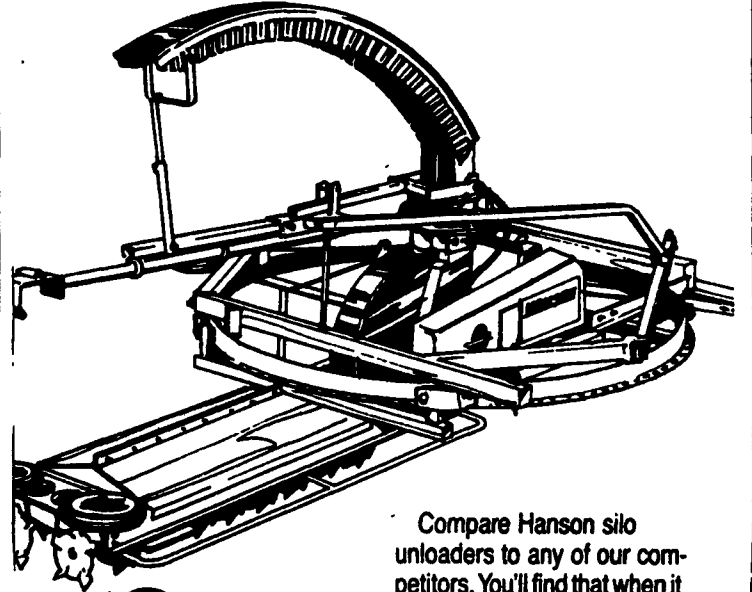
**20" BARNSTORMER 6000 - CFM:**  
 Perfect for all medium size agricultural buildings with low ceilings.

**24" BARNSTORMER 8500 - CFM:**  
 Best all around circulating fan for any building and any size animals. Available in 3 phase.

**36" BARNSTORMER 11200 - CFM:**  
 A giant of a fan for larger buildings and bigger animals. Single speed only. Available in 3 phase.

**J&D Manufacturing Supplies All Your Ventilation Needs From Alley Fans To Tunnel and Circulation, To Custom Ventilation Systems.**

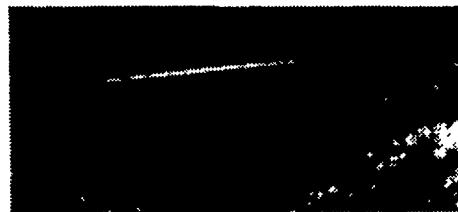
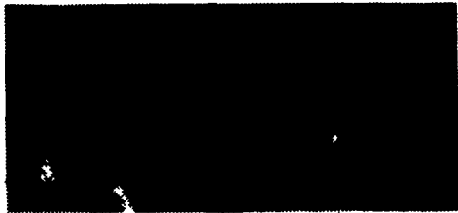
**Experience can't**  
**be imitated...**  
**quality can't be**  
**copied...Hanson**  
**can't be beat!**



Compare Hanson silo unloaders to any of our competitors. You'll find that when it comes to value, there's no competition. Hanson. There really *is* a difference.



Check the



- Piston Pumps
- Vertical Electric Pumps
- Vertical PTO Pumps

- Trail'r Type Lagoon Pumps
- Prop Agitators
- 3 Point Hitch Pumps
- High Pressure Manure Irrigation Pumps
- Hydraulic Submersible Pumps
- Side Mount Pumps
- Slurry Tankers
- Vacuum Tankers
- Replacement Parts and Rebuilds for Nesseth, Badger and Butler Pumps

Check with your **N-TECH Dealer** for the most complete line of high quality, performance-proven liquid manure equipment available.  
**NTH, Inc. Barron, Wisconsin 54812 (715) 537-9207**

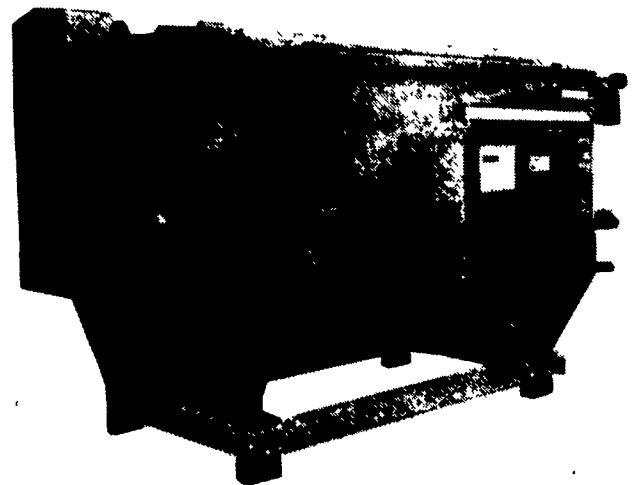
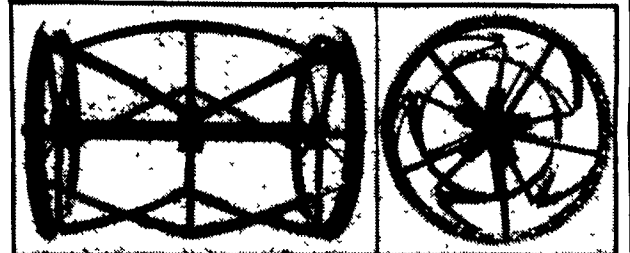


**CONVEYING — FEEDING**  
**EQUIPMENT SPECIALISTS**



**A TMR MIXER**  
**WITH A "REEL DIFFERENCE"**

**METKO**  
**1560**  
**POWER-BLEND®**  
**TMR MIXER**



**METKO 1560 BUILT FOR TODAY... AND TOMORROW**

**4 COMPANIES PROVIDING YOU THE BEST PRODUCTS AVAILABLE!**

**THE**  
**4ORCE**

**HANSON • J&D MANUFACTURING • METKO • N-TECH**

**DEALERS THROUGHOUT PA, VA, MD, W.V.**  
**LOCAL WAREHOUSE # 301-223-5151**  
**8 AM to 5 PM M-F**  
**CALL FOR THE DEALER NEAREST YOU**  
 or  
**CONTACT: KRIS KNUDSEN AREA MANAGER**  
**717-653-0385 FAX 717-653-0243**