

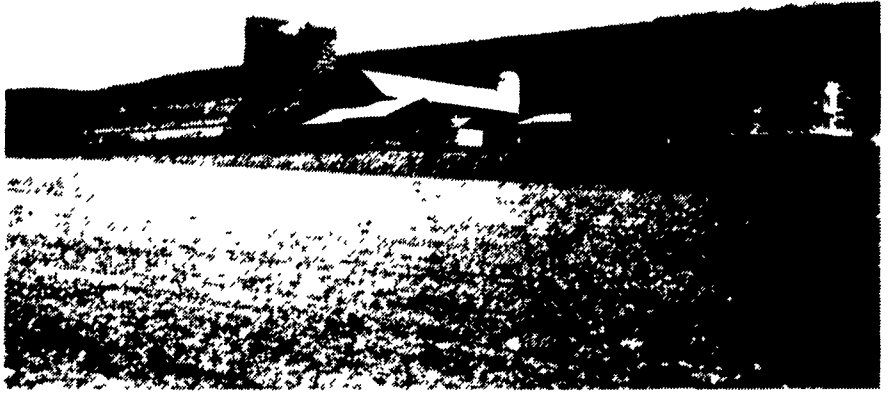
1993 Dairy Of Distinction Farm Photographs

ADAMS



Wilkinson Farm

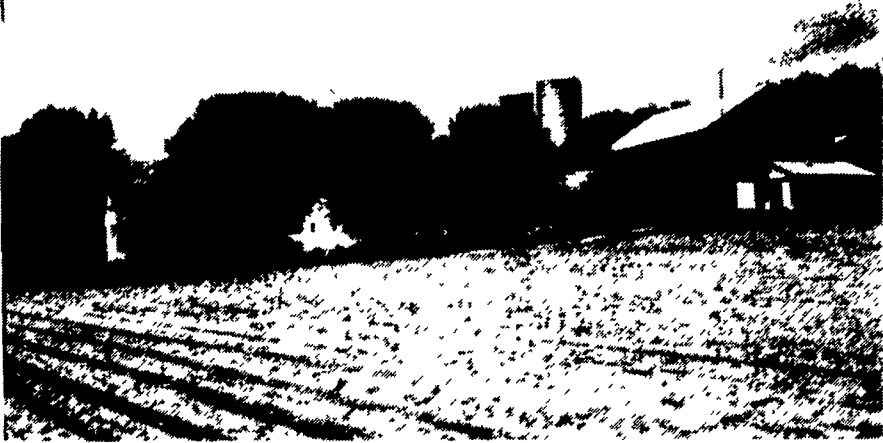
The 2200 Getty Acres Farm is owned and operated by the Wilkinson family—Lawrence and Doris; Ed and Tina, Carl, Lee, and Holly; Dan; Earl and Debbie. They have a 450 Holstein dairy herd and 150 dairy steers. The 210 milk cows are milked in a rotary parlor and average 19,300 lbs. of milk. In addition, they have a hay business. The farm is located five miles north of Gettysburg in Adams County.



Hesel Farm

Paul and David Hesel farm 300 acres in Bedford County on two farms. The new Dairy of Distinction farm is located southeast of Woodbury. It's a family operation. Paul and his wife Margie have April, Darin, who is married to Kathy, and Tonya, who is married to Mike Feathers. David and his wife Sharon have four children: Brent, Larae, Eric, and Keith. The family has 130 Holstein milk cows and the corresponding young stock. Herd average is 22,000 lbs. of milk. They milk in a double five milking parlor.

BEDFORD



Erb Farm

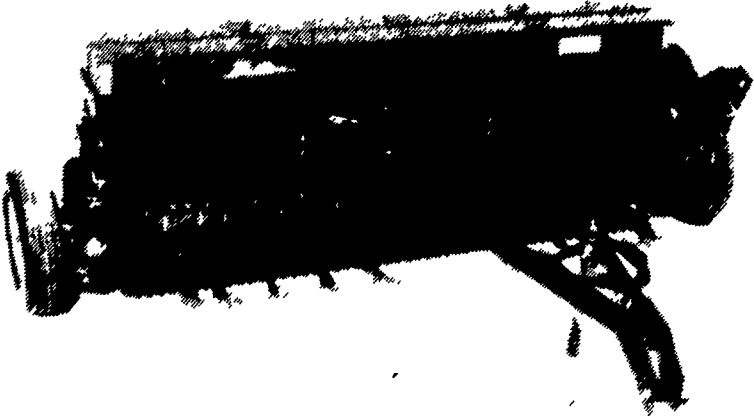
The Hollow Hills Farm of George and Rebecca Erb was named a Dairy of Distinction in Bedford County. Located South of Roaring Spring, the Erb's farm over 300 acres and have 150 Holsteins. The herd average on 90 milk cows is 18,500. They have free stall housing. The farm has been in the family directly for five generations and can be traced even further back through marriage. The Erbs have two children, Jonathon and Rachael.

ROLLING ON...IN THE 90's



MEETS THE CHALLENGE

**BRILLION IMPLEMENTS
KEEP GOING WHEN
OTHERS QUIT.**



Brillion SS8, SS10 And SS12 Seeders

Brillion has long been known for building the best agricultural grass seeders on the market. With the SS seeders, the best just got better. Improved design throughout from the frame to the transport system to the larger capacity box to all the options needed to suit your operation.

BASIC STANDARD MACHINE INCLUDES:

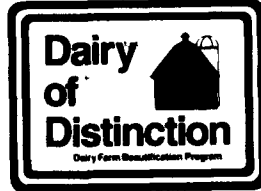
Meter/alfalfa seed box only, rims for 760x15 tires, hyd. transport including hyd. cyls. and hoses to tractor, new box drive (no center gears), heavy duty drawbar with balanced hitch clevis, tongue jack, standard 4C688 front wheels, bolted micro-meter (no roll pin), and glass tilted nylon seed meters face operator with rotation indicator decal on shafts.

OPTIONAL EQUIPMENT:

• Agitator Brome Box • Deep front wheels • S-tine track remover kit • High speed sprocket doubles seed rate output • Acme meter • Rims for 9.5Lx15 tires • New 760x15 or 9.5Lx15 tires.

For More Information Contact Your Brillion Dealer

PENNSYLVANIA	Elizabethtown MESSICK FARM EQUIPMENT CO	Maxatawny N H FLICKER & SONS, INC.	Tamaqua CHARLES SNYDER, INC	Watsontown DEERFIELD AG & TURF CENTER, INC	West Grove S G LEWIS & SON, INC
Adamstown ADAMSTOWN EQUIP INC	Intercourse C B HOOBER & SON	Needmore CLUGSTON FARM EQUIPMENT	MARYLAND		
Bechtelsville MILLER EQUIP CO	Lancaster LANDIS BROTHERS, INC.	New Holland A B C. GROFF, INC	Frederick CERESVILLE FORD NEW HOLLAND		
Barwick C H RINEHIMER & SONS	Lebanon UMBERGER'S OF FONTANA	Oakland Mills PEOPLES SALES & SERVICE	NEW JERSEY		
Carlisle GUTSHALL'S, INC	Loyaville GUTSHALL'S, INC.	Oley PIKEVILLE EQUIPMENT, INC	Bridgeton LESLIE FOGG	Columbus REED BROTHERS EQUIPMENT	
Dover GEORGE N GROSS, INC	Lynnport KERMIT K. KISTLER, INC.	Quarryville GRUMELLI FARM SERVICE	Elmer POLE TAVERN EQUIP. SALES CORP	Fairfield CALDWELL TRACTOR & EQUIPMENT	
Easton GEORGE V. SEIPLE					



**CONGRATULATIONS
DAIRY OF DISTINCTION
AWARD WINNERS!**

**You May Pay Less For
Other Dairy Farm Equipment,
...but it can cost
you more!**



**In the long run,
total owning and
operating costs of Mueller Dairy Farm
Equipment are often substantially
less than "bargain brand" dairy
farm equipment!**



Your Authorized Mueller Dealer

PRIEST'S REFRIGERATION

RD 8, Box 142
Hagerstown, MD 21740

(301) 797-3921

24 Hour Service