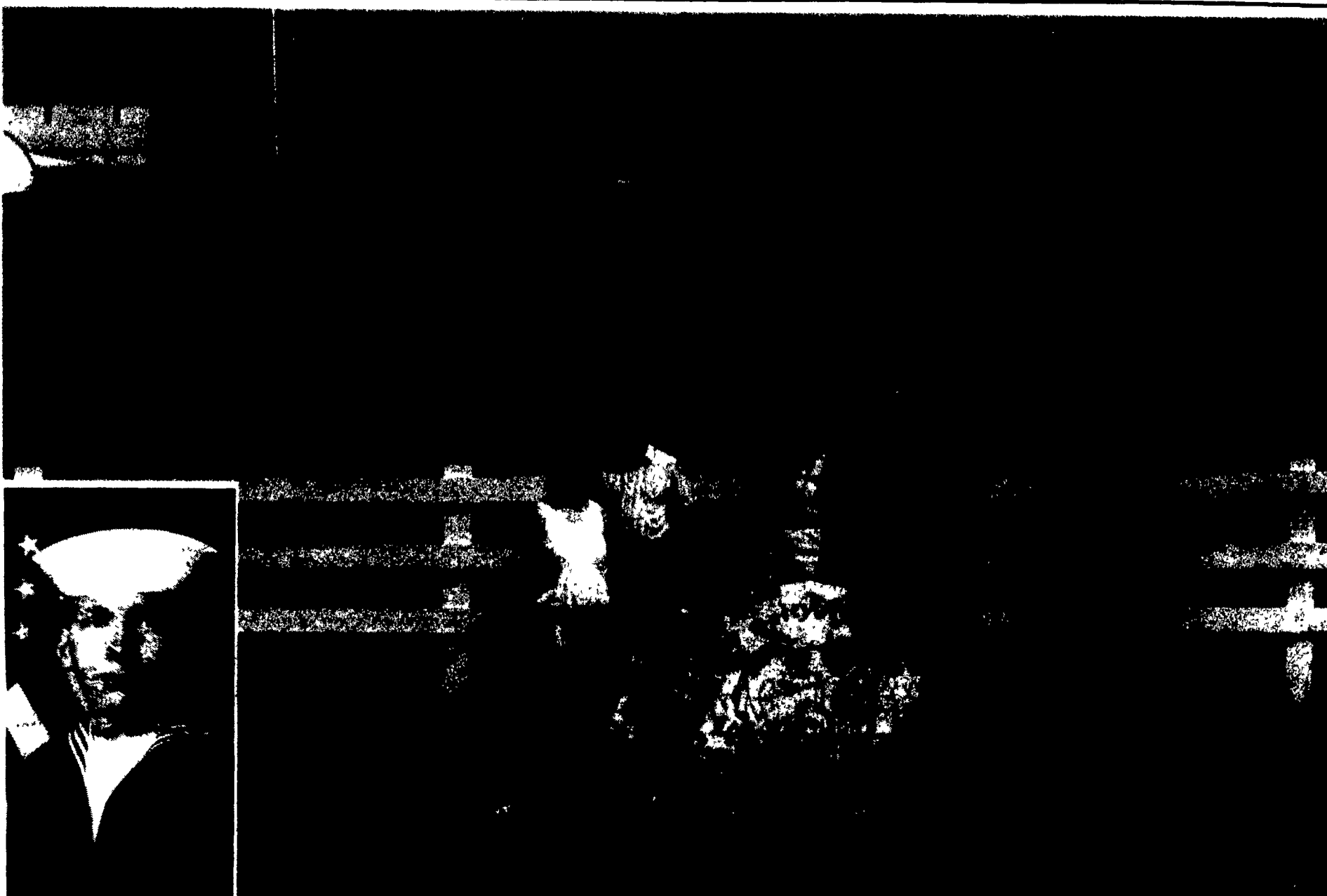


# Lancaster Farming

Dairy of Distinction Supplement to Lancaster Farming, Saturday, July 31, 1993



The view overlooking Getty Acres near Gettysburg shows the Lawrence Wilkinson family and farms as an introduction to this Dairy of Distinction section. From left, insert, Earl; Tina, Ed, and children, Carl, 6; Lee, 7, and

Holly, 1; Doris and Larry; Debbie; Laurel Sentz and Dan. Photo by Everett Newswanger, managing editor.

## Families Make Dairy Of Distinction Farms Beautiful

EVERETT NEWSWANGER  
Managing Editor

GETTYSBURG (Adams Co.)—The Wilkinsons at Gettysburg in Adams County are representative of the many closely knit families who own and operate beautiful dairy farms that have been designated in the Dairy of Distinction program. For Larry and Doris Wilkinson, farming not only means farming 2200 acres known as Getty Acres and working with a 450 head Holstein dairy herd, it means having the grandchildren nearby to follow grandpa around or go swimming in farm pool with grandma.

Besides the dairy, steers are raised, a large-bale custom hay business is operated and even Caribbean cruises are booked from the farm kitchen. In the photo background, the distant farm houses the dairy herd where 210 cows are milked in a rotary parlor. The farm on the left is home and has an extensive farm shop and room for dry cows and heifers. Family members are, left inset, Earl, who toured the Middle East with the U.S. Navy and expects to return there in early August but was back in the states for a month at the time of this farm visit. Around the Wilkinson stone trademark are from left, Tina, Ed, and children, Carl, 6; Lee, 7, and Holly, 1; Doris and Larry; Debbie; Laurel Sentz and Dan.

In all, 49 new designations of Dairy of Distinction were made across Pennsylvania. Including this year's winners, 522 of the state's dairy farms have won the award since 1986 when the program started.

The program was established in New York State in 1983 with one also in place in New Jersey too. The

program was developed to recognize farms which maintain a high quality farm appearance, and many of the owners of winning farms use the designation as an attraction to their farm by urban neighbors or as a sales tool to attract farm labor.

Farms that apply are judged on the roadside appearance of buildings, grounds, and surroundings. The winning farms receive attractive 18-inch X 24-inch signs from the program for exhibition at roadside and 11-inch X 14-inch color photographs for framing from *Lancaster Farming*. Winning entries are automatically judged annually to insure that they continue to meet the standards of excellence set by the program.

Winners this year by districts are as follows:

### DISTRICT 11

Earl E. & Bonita L. Krider, Krider Dairy Farm, Meadville; Earl R. Kling, Hartstown; Earle McFarland, E & J Farm, New Wilmington; Ivan G. Rose - Michael J. Casey, Roses Dan-Dee Farms, Spartansburg; James & Debra Caldwell, Tidy-Knoll Dairy, McKean; John R. & Judith H. Ligo, Literra, Grove City; Lawrence & Connie Yaple, Jr., Corry; Mark & Christine Cornell, Centerville; and Paul Senita, Rasen Farms, Wattsburg.

### DISTRICT 12

Donald & Dorothy DiFrischia, New Castle and Eugene & Louise Hoover, Mt. Pleasant.

### DISTRICT 13

Gaylord R. Wagner, Gay-Mar Holsteins, Tionesta and Richard Rhoades, Dick-Mar Farms, Eminton.

### DISTRICT 14

Dennis A. Reiman, Reimandale Farm, Berlin; Fred Perrin, F. Perrin & Sons, Everett; George J. Erb, Hollow Hills Farm, Roaring Spring; Gerald & Sonja Burkett, Martinsburg; Herman & Ralph Lieb, Barr Ridge Farms, Spangler; Lonnie & Debra Palmer, Warfordsburg; Mr. and Mrs. Leon W. Paul, Clover Hill Farms, Garrett; Paul & David Helsel, Helsel Brothers, Woodbury; Robert D. Will, Will's Acres, Somerset; and Wayne C. Koontz, Stag-EI Jerseys, Bedford.

### DISTRICT 15

Dale K. & Ray D. Kennedy, Catalpa Farms, Middletown; Larry G. Shuey, Annville; Lawrence Wilkinson, Getty Acres Farm, Gettysburg; Monie & Lisa Main, Mercersburg; Richard G. Mains & Son, Newville; Robert & Barbara Keeler, Hard Earned Acres, Shippensburg; and Wayne & Bonnie Deardorff, East Berlin.

### DISTRICT 16

Calvin C. Fisher, Jr., Fishdale Farm, Selinsgrove; Joseph H. & J. Kenneth Blank, Jo-Gra Farm, Middleburg; Leroy & Roderick Kauffman, Woodedge Farm, Reedsville; Perry M. Kretzing, Kretz-H-Farms, Loysville; and Robert & Linda Loy, Loy Acres, Loysville.

### DISTRICT 17

James & Helen Luckenbill, Ridge View Dairy, Canton; Jenkins & Pazzaglia Farms, Mansfield; and Vaughn & Kathleen Harkness, Harkness Farm, Columbia Crossroads.

### DISTRICT 18

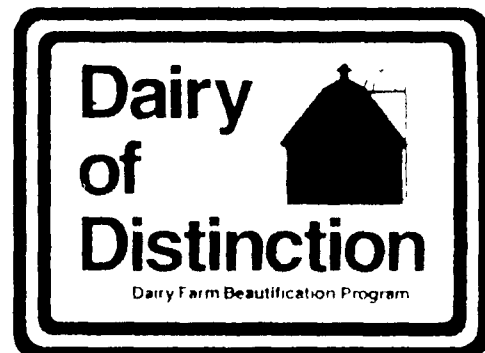
David Lauer, Lauer Farm, Springville; Harvatine Farms, Thompson; Hillside Farms Inc., Shavertown; and James Swetter, Union Dale.

### DISTRICT 19

The Martins, Bridge View Dairy, Conestoga.

### DISTRICT 20

Donald V. Selpt Family, Keystone Farm, Easton; George & Carol Ungemach, Sandstone Acres, Palmyra; Gideon Stoltzfus, Rose-A-Lea Farm, Honey Brook; James & Billie Hill, Little Hill Farm, Lebanon; Jesse & Michelle Howe, Everich Dairy Farm, Ottsville; and Martin & Darlene Younker, Red Fever Farm, Fleetwood.



*Editor's Note: This special section is dedicated to the beautiful dairy farms across Pennsylvania that have won recognition in the Dairy of Distinction Program. Distinction farms are not only a credit to their owners but are also a credit to Pennsylvania's dairy industry.*