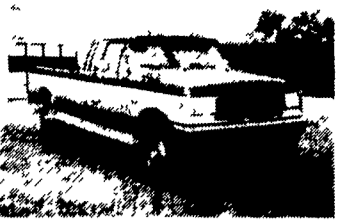


92 Dodge LE D250, Club Cab, Cummins, Turbo Diesel, Auto, PS, PB, PW, PDL, Cruise, Tilt, Air With Fiberglass Topper, 4,000 Orig. Miles, With Bal. of Factory Warranty, Like New

\$19,800



1991 Ford F250 XLT Lariat, 4x4, Super Cab, 351 EFI, Auto, PS, PB, PW, PDL, Cruise, Tilt, Air, AM-FM, 8800 GVW, 16,000 Miles, Blue & Silver With Bal. of Factory Warranty.

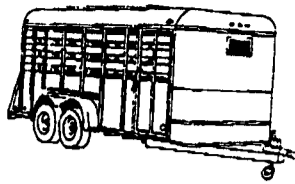
\$17,900

A&J Auto Sales

798 E. Main St. Rt. 322 East, Ephrata, PA 17522

717-733-2873

The New Improved Moritz



Yes!! Moritz has Changed.
It's The Same Rugged Work Horse
It Always Was....
But With Some Nice Improvements!

- Treated Yellow Pine Floor
- New Stronger Reinforced Tongue
- Spring Loaded Slam Latch on Divider Gates
- Newly Designed Rear Slider To Make Opening And Closing A Breeze

Stop In And Check Out The New Moritz Today.



Hostetler Truck Bodies & Trailers
Rt. 322 Milroy, PA 17603
(717) 667-3921

R & R CAR AND TRUCK CENTER

84 IHC S1954, DT466, 5 & 2 Spd., PS, AB, 22' C&C, 32,800 GVW, New Insp & Paint.

Call For Details



42x13' FRUEHAUF REEFER VAN TRAILER with Frigidaire Electric Refrigeration Unit, 220 Volt, Single Phase.
Priced Right At \$2,500

81 MACK U685T, SADC, 250 HP, 5 Spd., PS, AC, New Insp. & Tires

Call For Details



CALL RAY LEED:
(717) 560-4901

USED TRUCKS



1989 GMC Crew-Cab Dually, 1 Ton, 454, Auto, PS, PB, AC, Cruise, Tilt Wheel, AM & FM Cass. Stereo, 111,000 Miles.

\$9,900.00



1988 GMC 2500, 4x4, Sierra SLX 350 FI, Auto w/OD, PS, PB, AC, Tilt Wheel, AM & FM Stereo, 58,000 Miles.

\$10,800.00



1984 Ford XL
4x4 With Cap, PS, PB, Auto, AM/FM Cass., Sliding Rear Window, Blue and White Finish
\$4,250

Countryside Auto Sales
717-664-2170 Office
717-865-3488 Home

FOR SALE

MACK Model U Rebuilt Single Axle, Wetline, 73,280 Lbs., With A MUV-ALL Dual Axle Mach. Traller, 41 1/2' Long and 8' Wide with 12" Hinged Extension for Wide Loads, Hyd. Beavertail and Hyd. Winch. Low Load 36,000 Lbs.
We Have No Further Use For This Unit

See It - You Might Fall In Love With It

Kermit K. Kistler, Inc.
7886 King Highway, Lynnport, PA
215-298-2011
Ask For Kermit or Ronald Kistler

Financing Available

MARTIN'S AUTO SALES

1025 W. Main St., New Holland, PA 17557

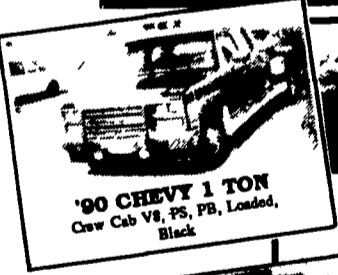
(717) 656-6621

CENTRAL PA'S LARGEST GM DEALER!

Frederick

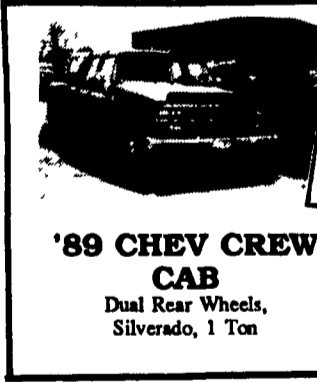
THE TRUCK PLACE

OVER 200 NEW AND USED TRUCKS IN STOCK!



'90 CHEVY 1 TON Crew Cab V8, PS, PB, Loaded, Black

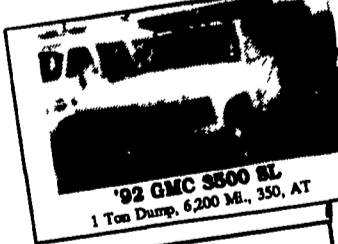
CHEVY SUBURBANS
5 New & Used To Choose From
2WD & 4WD Available



'89 CHEV CREW CAB
Dual Rear Wheels, Silverado, 1 Ton



'91 GMC CONVERSION VAN
13 Pass., Extra High Top, Front & Rear Air, Frederick Owned, Only 535 Miles, Ideal For Wheelchair Lift.



'92 GMC 3500 1 Ton Dump, 6200 M., 350, AT

CONVERSION VANS
15 To Choose From!
Hi-Tops & Low Tops Available

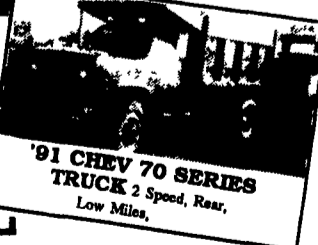
EXT. CAB & CREW CAB DUALY'S
Centurion Conversions & Silverados In Stock 7 To Choose From! 2WD & 4WD Gas & Diesel (2) '92 Leftovers In Stock!



'93 CHEVY 3500 1 TON SINGLE WHEEL CREW CAB
6.5 L Diesel Engine



'91 & '92 1-TON STAKE BODY TRUCKS
Hurry They'll Go Fast!



'91 CHEV 70 SERIES TRUCK 2 Spd, Rear, Low Miles.

IF WE DON'T HAVE IT, WE'LL LOCATE IT!

Frederick

The SUPERMARKET OF TRUCKS

(717) 274-1461 • PA (800) 222-5523

1505 Quentin Rd.
Rt. 72 - Lebanon
SALES HOURS:
Mon.-Fri. 9-9
Sat. 9-5

We've Now Moved To A Bigger & Better Location
Full Line Ford Cars,
Ford Trucks, Lincolns,
Mercurys, Jeeps, Eagles

YES!! ENGLE-RISSINGER AUTO GROUP DOES MAKE IT EASIER!!

Over 300 New & Used Trucks, Vans & 4x4's

- 1992 Ford F150 XLT, V8, A/OD, AC
- 1991 Bronco XLT, A/OD, AC, 28K miles
- 1990 Ford F250, auto trans, AC, low miles
- 1990 Ford F350 crew cab, XLT, auto, plus air, 48K miles
- 1990 Ford F450 diesel dump truck, 5 speed, white cab, just 17K miles
- 1989 Bronco II XLT 5 speed, AC
- 1988 Bronco II, XLT, A/OD, AC
- 1988 Ford F150 super cab, XLT, 2WD, V8, A/OD, AC
- 1986 Ford F150 XLT, 4WD, auto, AC
- 1993 Jeep Cherokee Sport, 6 cyl, A/OD, AC, red, 4 door
- 1993 Jeep Wrangler, 6 cyl, 5 speed, PS, brakes, 3K miles
- 1991 Jeep Cherokee, 2 door, 6 cyl, A/OD, AC
- 1984 Jeep Grand Wagoneer, V8, Auto, AC
- 1991 Ford E350 15 Passenger Van 7.3L Diesel, A/OD, AC
- 1989 Ford F250 4x2 XLT, 351, V8, Auto Trans, A/C, Heavy Hauler
- 1990 Chevy 3500 Cab & Chassis, DRW, 4x4, A/C, V8, 5 Spd
- 1989 Ranger XLT, AC, 5 Spd, 2.3L, 30,000 Miles, Blue & Silver
- 1992 Ranger XLT, V6, A/OD, AC, Fiberglass Cap, 13,000 Miles
- 1991 Ranger XLT, 4x4, 4.0L V6, A/OD, AC

ENGLE-RISSINGER AUTO GROUP

Rt. 147 Just North of Halifax
Halifax, PA 17032
The Call's On Us 1-800-242-8075
1-717-896-3421