

Wanted To Buy

Top Dollar For Old Log Cabins, Summer Kitchens, early frame houses for removal. Salvage of interiors of very old (stone or brick) houses, wide attic flooring, wide roofer boards & grainery boards, Indian doors, interior & exterior, doors with strap hinges, corner cupboards. *Pay the most - travel the farthest.
215/857-5504

32 MISCELLANEOUS

Lathe #2 & 3 w/s terret, \$1250. 717/354-3705.

MEAT CUTTING BAND-SAW, \$323. Call 800-445-4669.

PAYING TOP DOLLAR FOR ORIGINAL WIDE AT-FIC FLOORS. WE RE-MOVE 717/229-2806.

Pexto footshear 37"x16 guage, front guage and back guage, like new condition, \$700 Index milling machine, Bridgeport type, \$1,500. Doall model C-7 horizontal cut off saw, \$1,000. (908)453-2088.

SAVE MONEY ON WOODWORKING MACHINES!

Band saws, jointers, planers, routers, scroll saws, drill presses, table saws, sanders, lathes, shapers, dust collectors & more in stock. 30 Day Free Trial! 1 Year Warranty. Call For Low Prices. 1-800-445-4669. Terre Hill, Pa.

Shears 1/4 X4' cast iron, runs, \$3250. 717/354-3105.

WANTED: Used tools and machinery. Buy, Sell, Trade, Consign or Finder. B.J. TOOL & SUPPLY, RT 422W, Myerstown, PA 1-800-772-9845.

33 RECREATIONAL VEHICLES

'77 Suzuki GS550E 550, very good condition, new tires, new battery, \$795. 215-799-3283.

Ultralight Airplane Rotec Rally 2B, 430 Cuyuna engine, ballistic chute, \$2500. 717/354-3105

1970 Olds 98 convertible, 64,000 original miles, paint and top, 2nd owner, PS, PB, seats, top and windows, cruise control, AC, and AM/FM stereo. \$4000 OBO. (717)533-3737 Hershey, PA.

90 Olds Calais
4 Dr, Blue, Quad 4 Aluminum wheels Loaded, 10,000 Miles
\$7,995

89 Honda Accord,
4 Dr, LXI
\$9,800

90 Pontiac Grand Prix,
3.1 V6, Automatic, Black
\$7,900

91 Honda Civic DX,
4 Door, Automatic, A/C, 28,000 Miles
\$8,400

Burkholders Auto
Danville, PA
717-437-3848

DDB, INC.

410-235-1300

Jet 20" Vert. Bandsaw - 1 Phase, Monarch EE Cattle, 1/2 Yd. Clam Bucket (New), 1/2 Yd. Drag Bucket (New), 5,000 lb. Hyster Pneumatic Forklift, 6'x3/16" Cincinnati Shear, Foley Router Bit Grinder, Thermotron Chamber, Do All C-80 Bandsaw, Johansson Radial Drill, Reverse Osmosis Water Filter - 50 GPM, 18 Ton Generator. Adira 10'x1/4" Shear, Adira 70 Ton x 10' Press Brake

Wanted To Buy - Young Min.

English Call Ducks In White & Esp. Snowy, Also Young Black East Indies Ducks. Top Dollar Paid For Them. Need 2 Doz Eng. Calls & 1 dozen B.E. Indies. Must Be Able To Ship To Me
(215) 857-1002 Anytime
Call Collect - Ask For Debbie. Chester County

TROUT Michelfelder's Trout Farm, Inc.

R.D. 2, Boyertown, Pa. 19512

215-367-2769

Serving Restaurants, Game Assns., Private Stocking For Over 30 Years
Call For Price Quotes
- LIVE DELIVERY -



35 TRUCKS & TRAILERS

1927 Chrysler 4 door sedan, restored, original interior, excellent condition. Runs like a top, what more could you want!! \$8,850 215-754-6298..

1969 Diamond-Reo (compact), 33 GVW, 6-200 gas (rebuilt), 5/2 speed, air brakes, 20 ft. chassis, excellent rubber, inspected, must be sold. \$2300 o b o 717-456-6000.

1972 R Model Mack w/30 ft. aluminum dump trailer Good condition, \$20,000. (215)268-2910.

1974 International 1-ton dump truck, 10' body, inspected, excellent condition, \$3500 215-885-1032

1974 Mack U Model, single axle, 5-speed, 237 engine, \$3000 OBO 717/872-5393

1986 Chevrolet 1/4 ton truck, w/Reading Utility Box, 350 V-8, auto, P/S, only 26,000 miles. 717-367-6496.

1980 F250 4X4, Needs Work \$750 215-932-2767.

1978 C-65 Chevrolet 35,000 GVW, 427 gas, 5 speed, 2 speed, air brakes, 80% 10 00 20 radials, air-shift PTO, excellent condition 717-367-6496

450 Case crawler loader, good undercarriage, 69 Chevy dump truck and low-boy trailer, inspected All in good condition, \$20,000 Retring 717/336-6815.

45' Flatbed, 11x24 5 tires, Mack bogey 4 17 ratio, 11x24 5 tires, hyd. 5th wheel, 5' lift. Great for dumping lumber trailers. 215/262-1825.

1979 Ford F250 Ranger XLT crew cab, 460 engine, AT, PS, PB, recent engine work, new radials, good condition, excellent for towing, as is, \$1,000. Bethel, PA (717)933-5064.

1975 Ford LTS 9000, tri-axle dump truck 44,000# rears, very good condition, \$14,500. 215-588-9543

1975 International 1600 Loadstar, 4 speed, 2 speed rear, excellent mechanical condition, dump bed, 8 1/2' power angle plow, \$6000 OBO 717-656-4808.

40' sliding tandem boom trailer, good condition. 908-725-0227 after 6PM

1986 GMC cattle truck, 12' Eby body, power winch, \$8500 717/698-8139.

1987 Int. 22' flat, 33,000 GVW, 9-Litre, 5+2, PS, FM-Radio, air brakes, 71,000 mi., excellent cond., \$19,200. 717/864-3686.

1988 Chev Crew Cab CK-3500, 454, Auto., AC, 4WD. Many options, 42,000 mi., excellent, never used for towing. \$13,500 215-298-2566.

1990 Chevy G20 sport van, 5 passenger, 305 auto, PS, PB, air, cruise, tilt, privacy glass, new radials, charcoal, \$10,500. 717-733-2873

1990 Chevy Dump Truck, model C70, 8.2 liter diesel, w/4400 mi., 33,000 GVW, red and white, chrome front bumper and mirrors, 10' Lancaster dump body, 1000-20 radials, dual fuel tanks, air seat, 5+2 trans., 21,000 rear, 12,000 front, air set-up for trailer, \$32,500. Must see. Paid \$37,000. 717/567-7260 until 6PM, after 717/567-6059.

1990 tandem axle roll back, 22' Danco roll off w/ winch, 1979 W model cab-over Company out of business, truck excellent shape 215-932-2753 8-5PM, 215-869-2649 after 5PM

1991 Ford F250, 4x4, 7.5 gas, auto, air, etc 72,000 miles. \$11,500 410-833-7983 Evenings

Chevy C30, 1985, w/11' steel flatbed, 454, AT, PS, PB, AC, good condition, \$5900. WANTED: 12' truck bed 717-345-4882

'87 Dodge 250, HD, 1/4 ton w/8' Reading utility body, 360 auto, PB, PS, AM-FM, 8,510 GVW, 43,000 original miles, 1 owner, new radials, excellent condition, \$8,975. 717-733-2873

'87 Ford XL F250, 4x4 w/8' stake body, 351 auto, PB, PS, AM-FM, dual tanks, 8,600 GVW, 41,000 miles, excellent condition, \$8,900. 717-733-2873

'70 Int. 18' dump truck, rough, \$1,000. 410-429-1927

'76 GMC 15 Sierra Classic 4X4, 400 engine, needs work, \$300 OBO 717/665-7863.

'77 Ford 250 light duty pickup, wetline kit, no shaft type. 717-354-5796.

'77 Trailmobile 44' flatbed w/5' side kit, good tires and brakes, \$3300; '79 Great Dane 40' flatbed w/slider, \$1800. Lancaster Co 717/396-9718.

'87 Freightliner conventional, 350, 9 speed, air ride; '76 R model Mack, tandem, 300, PS, wetline, \$8500; '76 Chevy 16' dump, 427, 5+2, new motor, \$3500; '81 Mack Mid-Liner, 250, 24' reefer body \$8500; Mack rear cutoff, air ride. 215-944-9871.

87 Volvo/White Conventional 3406, CAT, 355 Rears, Dual 180 Gallon Tanks, Air Ride Cab, Dual Air Ride Seats, A/C, PS, 42" Sleeper, 50K on Rods and Mains, No Recaps, Bright Red w/Gold Trim. Sharp Truck, Ready to Go. \$19000 717-436-5454.

'87 White Conv Non-splr., 350 Cummins, Jake Brake, 9-spd, 11R24 5 Tires, budd wheels 2 1 5 / 7 5 4 - 7 3 7 1, 215/754-7842.

1980 IN. school bus, 345 engine, 5-speed, excellent condition 301-582-2354 evenings.

1981 GMC 7000 dump, air brakes, \$7900/OB; 1978 Ford F-600 dump, 10' snow plow, \$3800; 1961 Mack diesel tandem tractor, 35 ton, Shertzer trailer, \$5900; 1969 Int. 14' platform dump, excellent condition, \$3500/OB 609-466-2953.

1983 Chevrolet P/U, 1/4 ton, inspected 6 cycle, auto, P/S, ladder rack/tool boxes 717-367-6496.

1983 F250 Diesel 4WD, new Reading utility body, \$4000; 1988 F350 cab, chassis-diesel 4WD, long wheel base, 35,000 miles, auto, air, overdrive, \$13,500; 1985 Mack mid-liner, 85,000 miles, air brakes, 32,000GVW, 11 00x22.5's, 18' stake dump body, \$11,800 215/572-7700.

44' Fruehauf flatbed w/5' aluminum removeable sides. This trailer is in excellent condition. Good tires and brakes. Solid oak floor Good tarp. PA state inspected. Only \$3,900. LanCo. (717)396-9718.

'86 Arndt 2 Horse Trailer, 7', new inspection, excellent condition. \$3,000. 717/733-6859

'88 Dodge Heavy Half ton pickup 4x4, 318-V8, P.S., P.B., 4-speed w/creeper gear. Looks & drives like new. Good farm truck. \$7900. 717/733-0850.

88Ford 250XLT, Diesel Clubwagon, Loaded, Dual-IAC, DualH, Cruise, Tilt, PW, PDL, HDTowing, \$8500, OrTrade onDiesel, SuperCab, PickUp. Berks. 215-562-4773.

'89 Chevy 3500 w/12' Reading stake body, 350 FI, 4 spd., PS, PB, 10,500 GVW, 18,000 original miles, like new, red, \$12,995. 717-733-2873

'89 Ford F250, HD, 1/4 ton, 351 FI, auto, PB, PS, AM-FM, 8,600 GVW, 48,000 miles, dark brown, .1 owner, excellent condition, \$8,975. 717-733-2873

'89 Ford XL F250 Super Cab, 351 EFI, 5 spd, PS, PB, cruise, tilt, air, AM-FM, 8,800 GVW, 44,000 miles, new Michelin radials, blue, excellent condition, \$11,995. 717-733-2873

'90 Ford F250, HD, 4x4, 351 EFI, auto, PB, PS, AM-FM, dual tanks, 8,600 GVW, new radials, 1 owner, 49,000 miles, \$11,995. 717-733-2873

'90 Ford XL F150, 300 EFI, 5 spd., PS, PB, AM-FM cassette, dual tanks, new radials, 45,000 miles, black, excellent condition, \$8,300 717-733-2873

'92 Chevy Beauville G30 extended 15 passenger, 350 FI, auto, PB, PS, PW, PDL, cruise, tilt, dual air, AM-FM, Michelin radials, charcoal, excellent condition, \$15,900 717-733-2873

'92 Four Star aluminum stock trailer, 22' w/tack compartment; Featherlite 25' enclosed trailer, used for mobile store Both excellent condition 215/562-5868

Brand new 8' pickup box for dual wheel Dodge 350, Berks County. (215)756-6150.

Chevrolet 3 car roll bed, 427 5-speed, 2-speed rear, \$6000; 1989 Nissan pickup, 19,000 original miles. \$4500 717/273-7474.

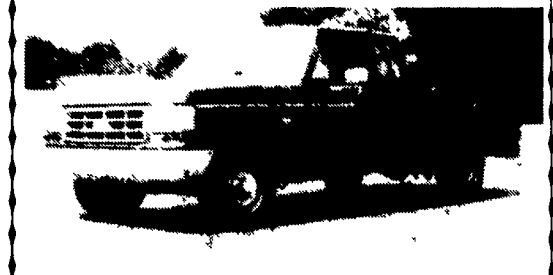
Diesel Engines: Detroit, 318, 16V71, 12V71, 671, V-653, 6V92, 8 2; Chev diesel 6.2. Other engines and truck parts. Reasonable prices. Call after 6PM, (215)944-9871.



IH Cabover With Prentice Loader
Gas, Log Grapple
\$2,200
Call Nights (304) 876-6653



1985 Volvo White 400 Cat,
13 Speed, 216 WB, Brake Saver, 6 Inch Straight Pipes, All Polished Wheels and Tanks 730,000 Miles \$20,000 Or Best Offer. Also PTO and Commercial Hyd. Pump and Tank \$300
(717) 738-2072



1987 Ford F-150 Supercab
F.I. 6 Cyl., 4 Speed With Overdrive, PS, PB, AM/FM Stereo, Dual Tanks, Full Rear Seat
\$5,800
Countryside Auto Sales
717-664-2170 Office
717-865-3488 Home

FOR SALE



1979 Int. S 1600 Welding Unit
Powered by a Deutz BF6-913 engine. Two speed rear. 11 ft. Aluminum bed with tool boxes and tank racks. Airco Trailblazer 375 amp. welder powered by a 2 cyl. 411 Deutz engine. Very economical unit ready to roll. Reason for selling - giving up road work.
Lenhartsville, Pa. Berks Co.
215-756-6150

"THIS WEEKS SPECIALS"

STOCK TRAILERS

16 Ft. Sale **\$2,800**

Gooseneck Trailers

Gooseneck 8x24, 14,000#, Convertible Dovetail & Ramps, Double Axle

SALE **\$3695**
Many Other Styles In Stock

EQUIPMENT TRAILER

8000 GVW

16 Ft.....**\$1795**
18 Ft.....**\$1925**

E-Z Dumper

6x10 Removable Sides 7000 GVW

SALE **\$2795**

REPLACEMENT TRUCK BODIES

\$595 Size 8 1/2 x 80 8 1/2 x 90, Features: Steel or wood floor, square head board, rub rail, stake pockets

Ringo Hill Farms Equipment Co.