

# POLE BUILDINGS, TRUSSES

GARAGES - COMMERCIAL BUILDINGS -  
HORSE BARNs - STORAGE BUILDINGS

For FREE ESTIMATES Call

MUSSER & ASSOCIATES, INC.

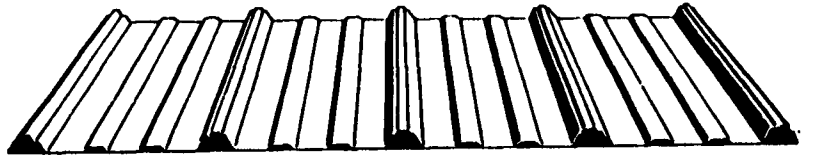
245 Fetterville Rd.  
East Earl, PA  
17519



SALES

**1-800-331-1875 717-354-7561**

## Steel And Aluminum



Specialists in metal roofing and siding. Special in price, quality and service. Please call this number: **1-800-325-1267** Thank you!

### Metal Roofing & Siding Co

987 Valley View Rd., New Holland, PA 17557

(717) 354-2728

## KW Pole Buildings



- Horsebarns • Riding Arenas • Livestock Facilities
- Implement Sheds • Storage Buildings • Garages

★Quality Built, Custom Engineered; Agricultural, Commercial and Residential Buildings.

★20 Yr. Painted Steel Siding & Trims With A Large Selection Of Colors.

★TI-II, Cedar Board & Batten And Vinyl Siding Also Available.

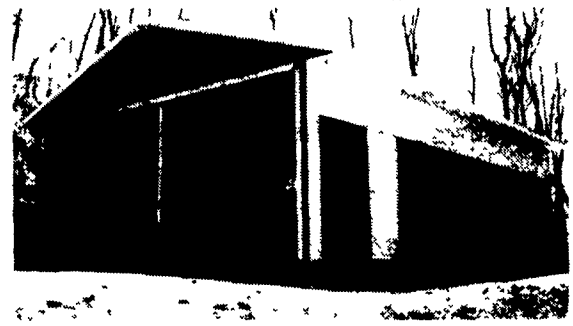
★Custom Designed Dutch Doors & Horse Stalls.

Call Us For A Free Estimate - Fully Insured

### KW Construction

Myerstown, PA

**(717) 933-8294**



## POLE BUILDINGS

CUSTOM DESIGNED & ENGINEERED

- COMMERCIAL □ AGRICULTURAL □ RESIDENTIAL
- HORSE BARNs • ARENAS • GARAGES
- IMPLEMENT SHEDS

BYLER  
CONSTRUCTION  
*Dennis E. Byler*

FREE ESTIMATES  
**717-866-6302**

# GLENWOOD METAL FORMING

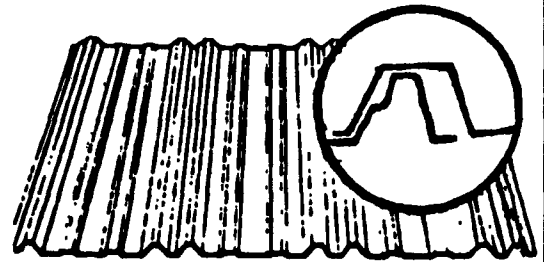
809 Glenwood Dr., Ephrata, PA 17522

FAX

**717-733-9590 - 1-800-582-9956 - 717-738-4988**

## MANUFACTURERS OF METAL ROOFING AND SIDING PANELS

WITH CUT TO  
LENGTH LINE  
IN 36" WIDTH



29 Ga. Galvanized  
26 Ga. Galvalume  
.024 Mill Finish Alum.

29 Ga. Painted  
26 Ga. White  
29 Ga. 304 Stainless Steel

### 24 Ga. Standing Seam Roofing

In Galvanized - Galvalume & Painted  
Commercial & Residential Panels

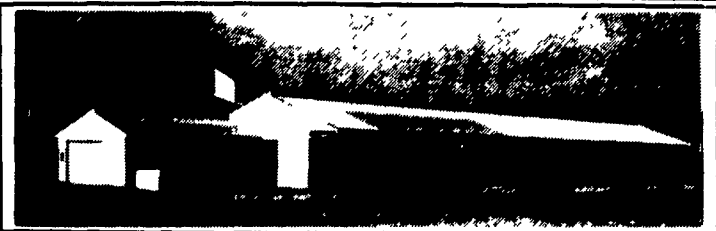
5 & 6" K-Style Alum. Seamless Gutters

- Pre-Hung Thermo Doors
- Agri Built Windows
- Ridgeolators
- Roofing Nails & Screws

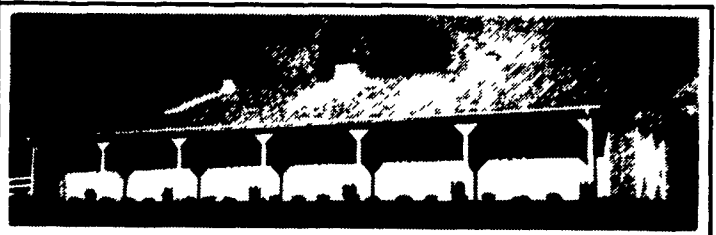
- Sliding Door Track  
Trolley & Hardware
- Ridge Vents

## AGRI-INC.

Custom Built Farm Buildings  
Designed To Your Needs



HEIFER AND CALF RAISING FACILITY



HORSE STALL BARN

Let Our Experience Work For You

- Dairy Complexes And Replacement Stock Facilities
- Horse Stall Barns And Riding Arenas
- Workshop And Machinery Storage Buildings
- Timber Column Buildings For Light Commercial



AGRI-INC. The Construction Professionals

151 E. Farmersville Rd., Ephrata, PA 17522

(717) 354-4271

Serving The Agricultural Industry For Over 25 Years

