

**PUBLIC AUCTION
OF 96+/- ACRE TRACT OF
WOODLAND**

**Thursday, August 12th
At 11:00 A.M.**

DIRECTIONS: From Route 897 right on Stricklerstown Road, property on right. Millcreek Township, Lebanon County.

PROPERTY CONSISTS OF: 96 +/- acres of woodland. Some mature trees. Terrain is level to steep slopes with one of the highest points in Millcreek Township. Property is being sold with no deeded right-of-way.

TERMS: 10% day of sale; settlement on or before October 1, 1993.

**Terms by: LESTER RISSER
HORNING FARM AGENCY, INC.
Alvin Horning AU-0433-L
Merle Eberly AU-2417-L
Main Street, Morgantown
215-286-5183**



Dairy and Livestock Sales

**Green Dragon
Livestock Sales**

Located 1 Mi. N. On
North State St., Ephrata
Sale Every Friday



**11:00 A.M. Beef
7:00 P.M. Small Animal Sale.**

200-300 Stocker & Feeders Every Friday. Regular Shippers Of Northern Cattle.
**WALTER H. RISSER,
Prop.
Home 717-838-4318
Office 717-733-2444**

SAT. OCT. 9 - 10AM, 4 Tractors, Farm Equip., Furniture, Hay & Straw. Located From Schaefferstown Take Rt. 419 North 2 Miles To The 2nd Road Left Go 1 Block Turn Right On Richland Rd., To The 3rd Farm On The Left, Leb. Co. Owners, Martin H. & Ruth G. Weaver. Aaron E. Martin, Auct.

THURS. OCT. 14, Farm Equip., Tools & Household Goods. Located Along Greble Rd., 2 Mi. S. Of Frederickburg. Owners, Glenn M. & Louella Zimmerman. Nevin Martin & Sons Aucts.

FRI. OCT. 15 - 7PM, (Ten-tative). 33rd Annual Central Pa. Co-Op Feeder Sale Located Belleville Livestock Market, Belleville, Pa. For More Information Call, Eugene Glick.

SAT. OCT. 16 - Arnold's Hog Production Sale - Lebanon Area Fairgrounds Harry H. Bachman, auct.

SAT. OCT. 16 - For Ethel M. Brandt Of 2398 Wisegarver Rd. In Manheim. 64 Acre Farm, Farm Equipment And Personal Property. John D. Stauffer, Auct.

**3 - HERD DAIRY COW AUCTION
Wednesday Evening,
August 4, 1993**

7:30 P.M.

Selling at Kling's Sale Barn, located 15 miles North of Carlisle on Route 74 - 2 miles from Landisburg.

SELLING FOR ART KLING

Load of Fresh and Close Registered and Grades - Young cows and First Calf Heifers from Canada.

Special Mention: Fancy Registered First Calf Heifer just fresh with Prelude Heifer Calf. And, 5 Registered Yearling Heifers - 3 Registered Short Breeds and sired by Rookie and Envoy.

**SELLING FOR PHARES AND EUNICE HORST,
SHIPPENSBURG, PA - 532-6538**

Complete Dairy consisting of 39 Milk cows and 4 Short Bred Heifers - 4 Registered, the balance Top Grade Cattle. 7 Fresh in June - 7 Fresh in July - 4 due for August - others in different stages - All A-I Bred. Making over 50 lbs. average in the Tank - Now. Nice young Herd - Tie Stall Cattle.

**SELLING FOR LESTER AND PAT EGOLF,
R.D., MERCERSBURG, PA - 328-2260**

38 Cow Dairy - with 5 Dry Cows and 6 Short Bred Heifers. Herd consists of 6 First Calf Heifers that will be Just Fresh or very Close by Sale Date - 6 other Cows recently Fresh - 5 Dry Cows - and others in different stages - Certified and Accredited.

**AND SELLING FOR JOHN BEATTY,
NEEDMORE, FULTON CO. - 573-2859**

Complete Milking Dairy of 20 Cows. All A-I Bred and Sired. Several Good Fresh Cows sell along with several Fall Cows - Tie Stall Cattle - Doing a good job in the tank.

Sale Manager's Note: The three Dairies are all Complete Dispersals - Several Nice Cows selling and Good fall cows, also. Everything Pregnant - Checked in my barn. Something for everyone in this Sale. V.A.K.

Selling at 7:30 for Phares Horst: Oliver 770 Diesel Tractor - Narrow Front - 3 Pt. - New Paint - Good Tires. Also, N.H. 352 Grinder Mixer.

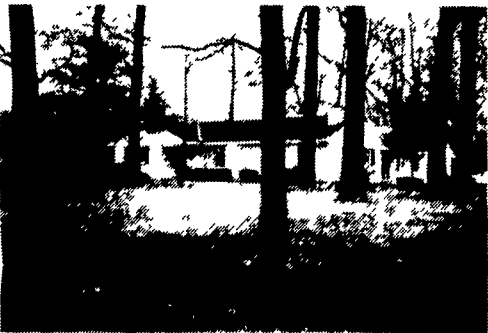
Sale Managed By:
Kling's Auctions, Inc.
R.D. 1, Box 66, Landisburg, PA
PA License #500 717-789-3883



**Public Sale
Valuable Real Estate, Antiques,
Household Goods and Tools
Saturday, July 31, 1993**

8:30 A.M.

Located at 1033 Lebanon Road,
Manheim, about 2 miles north of
Manheim off Route 72.



Real Estate consists of Holland Stone Rancher w/2 car garage attached, situated on 2.9 acres.

Large eat in kitchen w/Country Craft custom cabinets, built-in desk, wall oven, countertop stove, dishwasher, laundry in kitchen, patio off kitchen, large living room w/bow window, family room w/Atglon stone fireplace w/heatolator & fan. 3 bedrooms, full bath, powder room, large closets throughout, heated breezeway, large basement with stone fireplace. Oil hot water heat, storm doors and windows. This property is an exceptionally nice property, located in a beautiful wooded setting.

Real Estate shown by appointment only. Phone 665-2038 or 665-3594. Property to be sold at 1 p.m. 10% down day of sale, balance in 45 days or less.

Personal Property includes: GE refrigerator, Maytag washer and dryer, GE freezer, formica table w/6 chairs, small oak table w/board, cherry drop leaf table w/board, 2 daystrom chairs, rocking chairs, recliner rocker, 4 swivel kitchen chairs, wicker settee and chair, Jesse French piano, living room suite, hideabed, curly maple bed & bureau, twin bookcase headboard, occasional tables, twin beds, corner desk & 2 chest of drawers, 6 Samsonite folding chairs, needlepoint chairs, lawn chairs, 3 TV's, 2 black & white, 1 colored, early wooden commode, safe, 2 porch rockers, glider, roll top desk, desk chair, humidifier, dehumidifier, compact & Hoover cleaners, butcher bench, school desks, ping pong table, projector & screen, dishes, sherberts, set of Bavaria dishes, service for 12, silverware, savory roaster, large silver seal frying pan, stainless steel kettles, small appliances, iron skillet, tablecloths, colored feed bags, white muslin feed bags w/lettering, Dietz oil lanterns, sad irons, young wooden fork, wooden rakes, 2 prong forks, wooden plane, Beatty hatchet, flower pole, plant stands, pictures, old Baers almanacs, cherry seeder, corn driers, sausage stuffer, crocks, jars, toys, iron kettles, milk cans, vises, bench grinder, air compressor, stepladder, bag wagon, wheelbarrow, log roller, tree trimmer, hedge trimmer, Mossberg 410, Winchester 22 bolt action, 12 gauge single shot, bushel crates, baskets, cement tools, drill & bits, socket set, scythes, garden tools, lots of hand tools, nails, screws, Aires riding mower, Lawn Boy mower (2 years old), Lots of smaller items too numerous to mention.

Not responsible for accidents day of sale.
Food stand on premises.

Sale By

Mabel K. Moyer.

Donald Groff, Auctioneer
AU-001452-L
665-3594
Young & Young, Attorney

**150-250 HEAD
SPECIAL HORSE SALE
WORK HORSES
MULES**

**DRIVING HORSES
FRIDAY, AUGUST 6, 1993**

AT NEW HOLLAND
SALES STABLES, INC.
12 Miles East of
Lancaster, Pa. just off
Rt. 23, New Holland, Pa.



Horse Sale 7:00 P.M.

Horses Hitched At 12:00 Noon
Note: Tack Sale 6:00 P.M.
Wagons, Sleighs, Harness, Etc.

- 1 load top work horses & mules consigned by Ward Wright.
- 1 load Saddlebred Driving Horses consigned by Christ Z. Stoltzfus.
- 5 loads Standardbred Driving Horses consigned by: Jonas Beiler, Elam B. Stoltzfus, Clayton Waterberry, Jerome Wanner, Reuben G. Stoltzfus.

Plus Many More Consignments By Sale Time.
For more information call:
Norman or David Kolb- 61L
717-354-4341- Barn • Home- 717-397-5538
FAX# 717-355-0706

Next Horse Sale - Sept. 3, 1993 - 7 P.M.

**PUBLIC SALE
of New
Building Supplies,
Tools and Hardware
on Wed. Aug. 4 at 9 A.M.**

At Goods Auction 111 North
Maple Ave., Leola PA

250 Windows Singles, Doubles, and Triples, Casement, Skylights, Bow Windows, 300 Doors, Interior and Exterior Patio Doors, French Doors, Double and Tripple doors, 4 Ton Nails, Finishing, Spike Scaffling Nails, Common Nails, All Sizes Aluminum Nails, 150 Kitchen Cabinets and Vanities (Oak and Unfinished Pine), Treated Spindles, Porch Posts, Cedar Lap Siding, T111 Siding, Plywood Wood Stairs, Vinyl Soffit, Two Taller Loads A.S.S. Bricks, 300 P Dry Wall, Counter Tops, Shower Stalls, G.E. Electric Stoves, Double Ovens, Ice Makers, Microwave Ovens, All New and Under Warranty Fans, Trailer Load Lumber, Siding.

**Note This Building Material is
New From Lumber Men and
Wholesalers. We Will Not
Accept Used Materials, Tools,
and Hardware, Welders, Mowers,
Riding Mowers, Steel
Beams, Etc.**

Terms Cash
No Out Of State Checks
No Out Of Town Checks
A.H. 000014-L

Hay Sale Every Wed At 10 A.M.

**EASTERN BREEDERS INC.
ANNIVERSARY SALE**

Wednesday, July 28, 1993 - 7:00 P.M.

At Napanee Fairgrounds- Napanee, Ontario-
1 Hour West of Thousand Island Bridge
100 HOLSTEINS Featuring 25 Preludes
Pedigree - Show - Index

Rustowil Prelude Ida Seven, March '93 Prelude- Index +15+20+14+9. Dam GP- 6 Yr. 253-279-250, 2nd Dam VG 249-251-246.

Houghhaven Prelude Crissy, Nov.- '92 Prelude- Index +16+16+15+12. Dam GP Proj. 217-173-214, 2nd Dam VG 242-230-224.

Laurenda Collette, Index +12+15+13+4 by Cleitus and selling with her sister by Promise. Dam VG 87 SWD Valiant with a +30+41+30, 2nd Dam EX1* 229-244-229.

Savedale Mandingo Ida GP83 Beautiful 2nd calver due September from VG Daisy Cow by Image, 2nd Dam VG, 3rd Dam EX 4* Vetmers. Hager Daisy 11 Yr. 278-311.

Elmcroft Kaleer Sadie GP, Due sale time, 2 yr. 246-258-255, 2nd Dam VG 219-213-210.

Hazeldown Black Hope, To-Mar Blackstar heifer sells fresh from the EX 4* Ivanhoe Hope Cow, 2nd Dam VG 3* cow.

Evanhoe Slogan Jane, Oct. '92 show calf from Hanoverhill Tony Fayette VG with 231 184 193, 2nd Dam Hanoverhill Ult Fay EX Res All Can-Res All Am. 5 Yr. Fem 85, 3rd Dam EX USA 2E4* with 247-275 BCA.

Raivne Lindy Junnette. A fresh Lindy, Dam CP 224-234-234, 2nd Dam EX with 214-225, 3rd VG then the EX White Cow.

Please join us for this sale of fine quality Holstein Preludes- Inspirations- Starbucks- Acrostars- Lindys- Lincolns- Counselors.

Sales Staff
Murray Jackson- Napanee, Ont.
613-354-6713
Hugh Fawcett- Winchester, Ont.
613-774-3363
V. Art Kling- Landisburg, PA
717-789-3883



Pa. Buyers: Contact Art Kling for Information on Exporting -
Trucking - Order Buying, Etc.