

MARYLAND DHIA

June, 1993

ANNE ARUNDEL COUNTY

| HERD NAME | HERD COWS IN BRD | HERD COWS IN HERD T | MLK AVG FCM T |
|------------------------|------------------|---------------------|---------------|
| IS Naval Academy Dairy | H | 165 | 70.9 |

BALTIMORE COUNTY

| HERD NAME | HERD COWS IN BRD | HERD COWS IN HERD T | MLK AVG FCM T |
|---------------------|------------------|---------------------|---------------|
| Armocost Farms Inc. | H | 106 | 68.3 |
| Cash Farms | H | 131 | 66.5 |

CAROLINE COUNTY

| HERD NAME | HERD COWS IN BRD | HERD COWS IN HERD T | MLK AVG FCM T |
|--------------|------------------|---------------------|---------------|
| Harmony Farm | H | 153 | 75.3 |

CARROLL COUNTY

| HERD NAME | HERD COWS IN BRD | HERD COWS IN HERD T | MLK AVG FCM T |
|-----------------------|------------------|---------------------|---------------|
| Windsor Manor | H | 70 | 74.0 |
| Garstlyn Holsteins | H | 56 | 72.9 |
| Mike & Anita Haines | H | 59 | 69.7 |
| James & John Myers | H | 60 | 69.6 |
| Panora Acres Inc. | H | 151 | 68.2 |
| Carl & Todd Weant | H | 86 | 67.8 |
| Marlin Hoff | H | 337 | 67.3 |
| Maple Lawn Farm, Inc. | H | 185 | 67.0 |
| BB Wonderland | H | 61 | 66.5 |
| Md.-Carrollton | H | 55 | 65.9 |
| Garstlyn Brownschwiss | BrS | 12 | 65.7 |
| D. Richard Flickinger | H | 92 | 65.6 |
| Mayer's Stoney Point | H | 61 | 65.5 |
| Wilkin Holsteins | H | 45 | 65.3 |
| Byron R. Stambaugh | H | 38 | 65.2 |
| Jr. - Lees Farm | H | 107 | 65.0 |

CECIL COUNTY

| HERD NAME | HERD COWS IN BRD | HERD COWS IN HERD T | MLK AVG FCM T |
|----------------------|------------------|---------------------|---------------|
| Tom and Joy Crothers | H | 45 | 80.3 |
| Tom and Joy Crothers | BrS | 12 | 74.2 |
| Kilby Inc. | H | 254 | 72.2 |
| Albeck Farms Inc. | H | 160 | 70.0 |
| Zion Meadows | H | 96 | 68.5 |

FREDERICK COUNTY

| HERD NAME | HERD COWS IN BRD | HERD COWS IN HERD T | MLK AVG FCM T |
|---------------------------|------------------|---------------------|---------------|
| O Clayton Smith | H | 118 | 87.3 |
| Dave & Carole Doody | H | 122 | 81.1 |
| Savage-Leigh Farm | H | 159 | 77.6 |
| Hannahs Dist Springs Farm | H | 60 | 73.8 |
| Taylor Made Farm | H | 34 | 73.6 |
| Gary & Judith Remsberg | H | 93 | 72.6 |
| Hobble-Hill Holsteins | H | 82 | 71.9 |
| O Clayton Smith | G | 11 | 70.2 |
| David Toms | H | 194 | 69.8 |
| Wilcom, Donald L. | H | 156 | 69.4 |
| K Scott Hood | H | 49 | 68.9 |
| Jack Long Farm 2 | H | 171 | 68.4 |
| Dublin Hills Swiss | BrS | 22 | 68.1 |
| Paul & Karen Dotterer | H | 93 | 67.2 |
| Paul K. Coblenz & Sons | H | 170 | 67.1 |
| Wayne Z Tucker | H | 130 | 67.1 |
| Da-Bren Farm | H | 134 | 66.9 |
| Ronald & Ruth Cline & Fam | H | 137 | 66.3 |
| Warner Bros Inc | H | 151 | 66.2 |
| Spring-Vale Holsteins | H | 75 | 66.2 |
| Howard A & Ruth Pearl | H | 28 | 65.9 |
| Jerry & Dawn Murphy | H | 65 | 65.9 |
| Paul M Inskeep | H | 56 | 65.6 |
| Gary L & Mary C Snyder | H | 52 | 65.1 |
| Clovertop Farm, Inc. | H | 86 | 65.1 |

GARRETT COUNTY

| HERD NAME | HERD COWS IN BRD | HERD COWS IN HERD T | MLK AVG FCM T |
|------------------------|------------------|---------------------|---------------|
| Philip Beachy | H | 47 | 82.7 |
| Paul Yoder | H | 50 | 78.9 |
| Guards Farm Inc. | H | 49 | 76.6 |
| Paul & Henry Kinsinger | H | 67 | 74.8 |
| Menno J Yoder | H | 38 | 74.6 |
| Arlin Maust | H | 28 | 73.5 |
| Cleland Beitzel | H | 54 | 71.9 |
| Ernest & Dan Ganoe | H | 123 | 71.2 |
| Tobie Kinsinger | H | 30 | 70.9 |
| Jonas D. Kinsinger | H | 25 | 70.9 |
| Fred Petersheim | H | 45 | 70.7 |
| Oakview Ridge No. 2 | H | 46 | 70.1 |
| Maple Valley Farms | H | 30 | 69.9 |
| Calvin Schrock | H | 44 | 68.4 |
| Covewind-Hill Holstein | H | 28 | 68.1 |
| Bender, Carl | H | 80 | 68.0 |
| Jerry L. Yoder | H | 61 | 68.0 |
| Andrew W. Schrock | H | 47 | 67.4 |
| George Shawley II | H | 41 | 67.3 |
| Delvin Mast | H | 127 | 67.3 |
| Glenn E. Johnson | H | 36 | 66.7 |
| Gap Run Farm Inc | H | 80 | 66.0 |
| Oren C Bender | H | 114 | 65.1 |

HARFORD COUNTY

| HERD NAME | HERD COWS IN BRD | HERD COWS IN HERD T | MLK AVG FCM T |
|---------------------------|------------------|---------------------|---------------|
| Highland Heights Farm Inc | H | 125 | 79.0 |
| Homelands Farm | H | 47 | 71.3 |
| Strawberry Hill Farm | H | 123 | 70.2 |
| My-Ladys-Manor Farm | H | 219 | 68.7 |
| Maroamo Farm | H | 99 | 66.9 |
| David M. Keyes | H | 89 | 66.4 |
| Ehrhardt Farm Inc | H | 203 | 65.8 |

HOWARD COUNTY

| HERD NAME | HERD COWS IN BRD | HERD COWS IN HERD T | MLK AVG FCM T |
|-----------------------|------------------|---------------------|---------------|
| David & James Patrick | H | 139 | 68.7 |
| Paul F. Harrison Jr. | H | 77 | 67.3 |

KENT COUNTY

| HERD NAME | HERD COWS IN BRD | HERD COWS IN HERD T | MLK AVG FCM T |
|------------------------|------------------|---------------------|---------------|
| Fair Hill Farm Inc. | H | 236 | 77.7 |
| Gen Farm I | H | 742 | 75.5 |
| Roy W Crow | H | 44 | 71.0 |
| R & E Brink | H | 74 | 69.8 |
| Clover Leaf Farm | H | 58 | 66.9 |
| Friendship Farms, Inc. | H | 100 | 66.0 |
| P. Thomas Mason | H | 40 | 65.0 |

MONTGOMERY COUNTY

| HERD NAME | HERD COWS IN BRD | HERD COWS IN HERD T | MLK AVG FCM T |
|------------------------|------------------|---------------------|---------------|
| Walker, Stewart & Sons | H | 127 | 70.8 |
| Beneva Farms | H | 80 | 68.0 |
| Rudell C Beall & Sons | H | 178 | 66.7 |

POTOMAC VALLEY ASSOC.

| HERD NAME | HERD COWS IN BRD | HERD COWS IN HERD T | MLK AVG FCM T |
|--------------------|------------------|---------------------|---------------|
| Ron-Ell Dairy Farm | H | 59 | 71.2 |

QUEEN ANNES COUNTY

| HERD NAME | HERD COWS IN BRD | HERD COWS IN HERD T | MLK AVG FCM T |
|--------------------------|------------------|---------------------|---------------|
| Donald W. Skinner | H | 73 | 71.3 |
| Pintail Point Farm | H | 77 | 68.6 |
| McFarland Donnie & Wayne | H | 136 | 65.9 |

TALBOT COUNTY

| HERD NAME | HERD COWS IN BRD | HERD COWS IN HERD T | MLK AVG FCM T |
|----------------|------------------|---------------------|---------------|
| Wm. Brinsfield | H | 51 | 73.3 |

WASHINGTON COUNTY

| HERD NAME | HERD COWS IN BRD | HERD COWS IN HERD T | MLK AVG FCM T |
|------------------------|------------------|---------------------|---------------|
| Gilson R. Martin | H | 43 | 77.6 |
| Isaac And Diane Martin | H | 54 | 75.4 |
| Dar-View Farms | H | 142 | 73.0 |
| Creek Bound Farm | H | 74 | 69.7 |
| Curtis W Ausherman | H | 152 | 66.8 |
| Lynn Strite | H | 59 | 65.3 |
| Sunrise View Farms | H | 99 | 65.3 |

(Turn to Page A39)

HARVESTER TABLES

FOR ANY MAKE HARVESTER
NEW • CUSTOM-MADE TO FIT



- Beveled Rollers - Keeps belt centered
- Safety Lever - disengages clutch
- Quick Attach - no tools required
- Rough-Top Belting - better feed
- Stainless Steel Belt Lacers
- Two Coats Rustoleum Paint
- Easy-Adjust Conveyor Belt Tension

\$750⁰⁰

REBUILT HARVESTERS IN STOCK

- (3) NH 892 • (3) NH 890 • (1) Gehl 800
- (2) Gehl 600 • (4) JD 3800 • (1) Hay Tedder w/Engine

PRICED FROM **\$1,400 - \$3,500**



PROPANE GAS SUMMER SPECIALS

- Gas - 39¢/gallon (500 gal. min.)
 - 125 Gallon Gas Tank
- \$298**

SPECIALS

- 2 cyl. 912 Deutz Diesel, Good Cond., 28 HP \$1,850
- 40 HP Air Compressor w/Deutz Diesel, 55 HP \$3,800
- New Cummins Diesel, 45 HP \$2,050
- HA1000 Gehl Grass Hewed, Rebuilt, New Wheels \$750
- Very Large Barn Fan \$250
- 48" Fans Used \$175, \$225
- 25 KW, 3 Phase Generator, Very Good \$1,295
- Used Whitewashing Machine \$975 (for sale or rent)
- Vacuum Pump Oil \$4.50/gal.

ALSO:

Full Line Of Browning Pulleys, Belts, Bearings
Mobil Oil
Portable & Stationary Hydraulic Systems

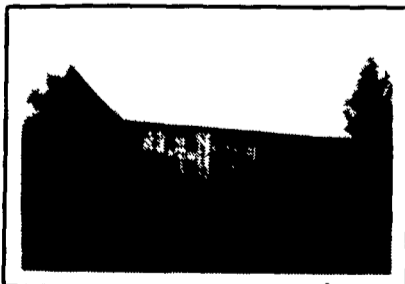
Georgetown Hydraulics
343 Christiana Pike,
Christiana, Pa. 17509

1 Mile East Of Georgetown on Christiana Pike
Closed Sunday



QUALITY • CRAFTSMANSHIP • COMMITMENT

337 Panorama Dr.
Denver, PA 17517



MORTISE & TENON
*NEW & RESTORATION



ALL STEEL
* COMMERCIAL
* LIGHT INDUSTRIAL
* AGRICULTURE



EQUESTRIAN
* RIDING ARENAS
* STABLES, ETC.

FROM DESIGN TO COMPLETION, OUR GOAL IS CUSTOMER SATISFACTION. WE OBTAIN THAT BY QUALITY CONSTRUCTION WITH COMPETITIVE PRICES. CALL FOR MORE INFORMATION

(215) 445-7897