

# Chester 4-H Beef Club Holds

(Continued from Page A1)

Downingtown.  
**Light Heavyweight Steers:** 1. Phil McAllister - Spring City; 2. Jason Marsch - Pottstown; 3. Jonathan Marsch - Pottstown; 4. Nathan Howe - Downingtown; 5. Sara Howe - Downingtown; 6. Nathan Howe - Downingtown; 7. Jonathan Howe - Downingtown.  
**Heavyweight Steers:** 1. Matt McAllister - Spring City; 2. David Howe - Downingtown; 3. Jonathan Howe - Downingtown; 4. David Howe; 5. Jason Wagner - Spring City.

Our judge for the day was Greg Musser of Lancaster County. Selection of the Grand Champion steer went to Matt McAllister Reserve Grand Champion steer went to Phil McAllister both of Spring City.

In the Fitting and Showmanship classes the results are as follows:

Senior Division: 1. Matt McAllister, 2.

Jennifer Dunleavy; 3. Jason Wagner; 4. David Howe; 5. Jonathan Howe.  
**Junior Division:** 1. Nathan Howe; 2. Jason Marsch; 3. Kasey McAllister; 4. Sara Howe; 5. Jonathan Marsch; 6. Phil McAllister.

**First Year Members:** 1. Donald Hodges; 2. Shawn McFadden.

After the show the beef club members were introduced to ROMANO a sale steer purchased by the clubs own treasury as a group project, with the volunteer help of the McAllister family from Spring City by providing the feed and care of this steer to benefit the 4-H Beef Club Show and Sale on Saturday, August 21, 93 at the Kimberton Fire Company Fairgrounds at 1:00 PM. All the proceeds from the sale of ROMANO above the purchase price will go directly to the 4-H Center Fund.

Donations to this fund will go towards the building of a new facility on Rt. 322 in Honey Brook called the Romano 4-H Center. This new facility will allow all the Chester County 4-H Clubs to conduct educational programs and to hold other events such as shows and meetings in a central location. ROMANO will be making an appearance at the Kimberton Fair July 26-31 and at the Goshen Country Fair Saturday evening Aug. 7. Anyone who is interested in purchasing a 4-H steer at the sale or would like further information on the ROMANO 4-H Center or how you can help by making a donation to the 4-H Center Fund please contact the 4-H Office at 696-3500.



Matt McAllister at halter showed the grand champion. Judge was Greg Musser.

BUY, SELL, TRADE OR RENT THROUGH THE  
**CLASSIFIED ADS**

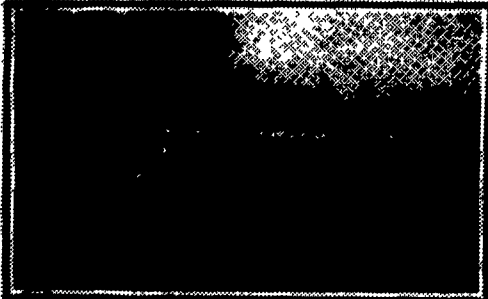
## ADDING THESE 2 TO YOUR HOME

**Vinyl Fencing**

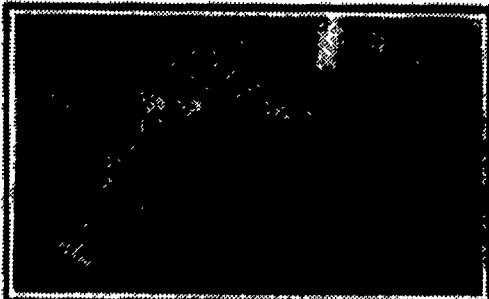


**Resource Lumber**  
 100% recycled polyethylene plastic

## EQUALS VALUE AND GOOD LOOKS



**Vinyl Picket Fence:**  
 Many Styles To Choose From



**PVC Railing & Resource Lumber Deck**

Vinyl Fencing and Resource Lumber add beauty, style and elegance to your home, business or farm.

**No More Rotting Or Painting**

**QUALITY FENCING AND SUPPLY**

QUALITY Our First Priority In Serving You!

1-800-633-7093

- VINYL FENCING DIV. - (717) 344-3300  
 622 N. Dixie Rd., New Holland, PA 17057
- CHAIN LINK DIV. - (717) 344-3300  
 147-A Amishtown Rd., New Holland, PA 17057
- PLASTIC LUMBER DIV. - (717) 344-3117  
 145B Division Hwy., New Holland, PA 17057

# FOCUS

**INFINITY**  
 Integrated Management Systems for the Dairy Industry

Dixie L. Burris, Membership Development,  
 Call 1-800-DHIA-TEST for information.  
 Pennsylvania Dairy Herd Improvement Association  
 DHIA Service Center, Orchard Road, University Park, PA 16802

## DHIA RECORDS MAKE YOU MONEY

### C.W. HEALD PROFESSOR OF DAIRY AND ANIMAL SCIENCE

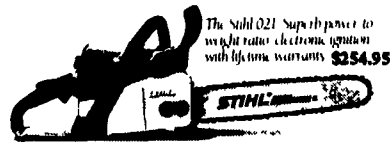
Farmers often think they receive a low hourly wage for farm work. In reality, it depends on what work is done during the hour. Changing the oil in the tractor is very important but does not pay well.

Planning and managing the farm is executive work and earns executive pay. As an example, lets assume a goal of increasing milk production 3 pounds per day in a

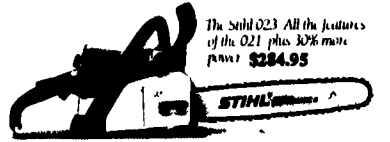
60 cow herd is set. That approximates 1000 pounds per lactation. Suppose a dairy farmer spent 5 hours comparing his lactation records with DHIA herds having 1000 pounds higher rolling herd average and spotted a nutritional problem. Further, finding this one weak link raises the farm's milk production 3 pounds per day. With a 60 cow herd, milk priced at \$12.00 per hundred weights, and feed costs equal to one half the cost of production, the hourly wage to the DHIA record analyzer would be 1000 pounds of milk

(Turn to Page A23)

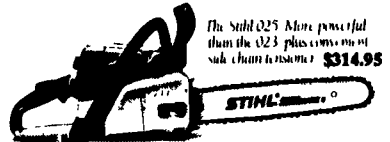
## The Crown Man's Candy Store.



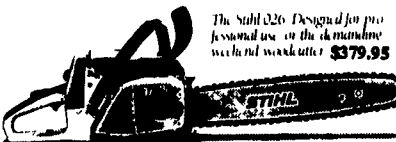
The Stihl 021 Super power to weight ratio, electronic ignition with lifetime warranty \$254.95



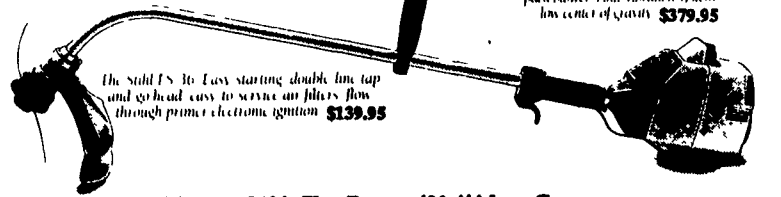
The Stihl 023 All the features of the 021 plus 30% more power \$284.95



The Stihl 025 More powerful than the 023 plus convenient side chain tensioner \$314.95



The Stihl 026 Designed for professional use or the demanding weekend woodsman \$379.95



The Stihl FS 36 Easy starting double line tap and gearhead easy to service air filters flow through primer electronic ignition \$139.95

The Stihl BR 106 Powerful backpack blower. Anti vibration system low center of gravity \$379.95

We respectfully request that you do not drool on this ad (Although we couldn't blame you) We've got every man's fantasy here Powerful, smooth-running machines that perform with precision and let you work with speed and efficiency

But if, heaven forbid, you think a chain saw is a chain saw, or that all trimmers and blowers are alike, we suggest you visit one of the full-service Stihl dealers listed below

Better yet, talk to any man who owns a Stihl He'll give you a more enthusiastic sales pitch than any ad we could ever write

For The Part Of You That Promised You'd Never Compromise.

# STIHL®

Available at these servicing dealers

**Bechtelsville**  
 PASSMORE SERVICE CENTER, INC.  
 RD 1, Rt. 100  
 215-367-9084

**Ephrata, Hershey**  
 HOLLINGER'S LAWN & GARDEN EQUIP.  
 Ephrata, PA 717-738-1131  
 717-656-2710  
 Hershey, PA 717-533-4060

**Ono**  
 SHUEY'S SALES & SERVICE  
 Jonestown Rd.  
 717-865-4915

**Dallastown**  
 TRI-BORO CONCRETE, INC.  
 435 Locust St.  
 717-246-3095  
 1-800-632-9018

**Gap**  
 GAP POWER EQUIPMENT  
 Corner of Rt. 30 & Rt. 897  
 717-442-8970

**Ronks**  
 A & B SALES & SERVICE  
 370 Newport Road  
 2 Miles South of Rt. 23  
 Along 772 Thru Monterey

**East Earl**  
 GOODS LAWN & GARDEN CENTER  
 Route 23  
 717-354-4026 Ext. 34

**Hamburg**  
 SHARTLESVILLE FARM SERVICE  
 RD 1, Box 1392  
 215-488-1025

**Leinbach Farm Equip.**  
 LEINBACH FARM EQUIP.  
 1120 Rittner Hwy.  
 717-532-5511

**Elizabethtown**  
 MESSICK FARM EQUIPMENT, INC.  
 Rheems Ext-Rt. 283  
 Elizabethtown, PA  
 717-367-1319, 717-653-8867

**Jonestown**  
 BLUE MOUNTAIN ENTERPRISES, INC.  
 Rt. 72 South  
 717-865-2994

**Tamaqua**  
 CHARLES S. SNYDER, INC.  
 RD 3  
 717-388-5945

**Elm/Lebanon**  
 BOMBERGER'S LAWN & GARDEN  
 Elm: 717-664-4663  
 Lebanon: 717-272-4155

**Myerstown**  
 EBLING LAWN & GARDEN SERVICE  
 698 E. Lincoln Ave.  
 717-866-6720

**Whiteford MD**  
 ENFIELD EQUIPMENT INC.  
 720 Wheeler School Rd.  
 301-879-5090

**Ephrata**  
 WES STAUFFER ENGINES & EQUIPMENT  
 23 Pleasant Valley Rd.  
 717-738-4215

Distributed By  
 Keystone Stihl