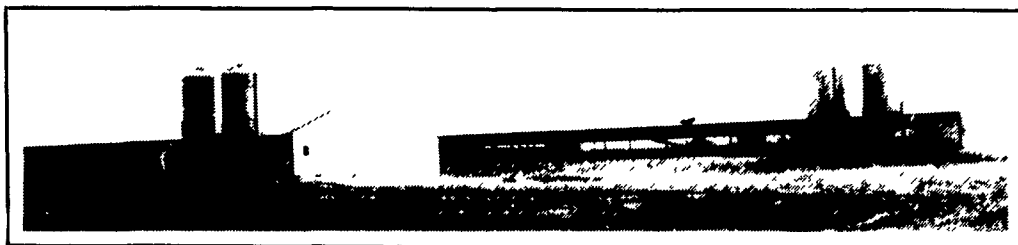


FARMER BOY AG INC.

Your Complete Swine, Poultry & Ventilation Equipment Center



**ADD
INCOME TO
YOUR FARM**



This 2-stage facility features a 50'x215' brooder building and a 50'x 520' growout building designed for 8,000 Toms.

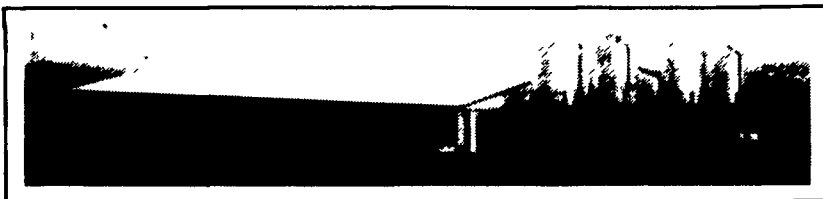
● Custom Design

● Assistance In Financing

CONTACT

FARMER BOY AG...

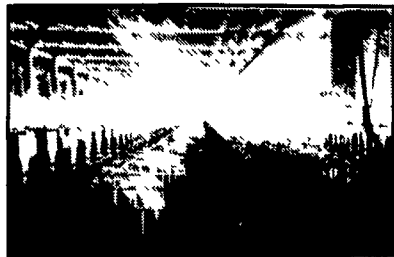
Your Professional Company



2200 HEAD FINISHER

● Assistance In Securing Building Permits

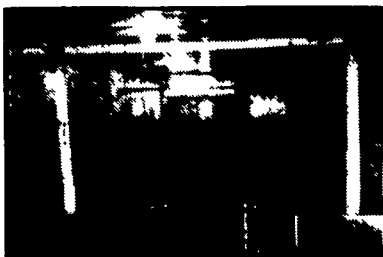
● Assistance In Nutrient Management Planning



BREEDING & GESTATION



FARROWING



NURSERY



FINISHING

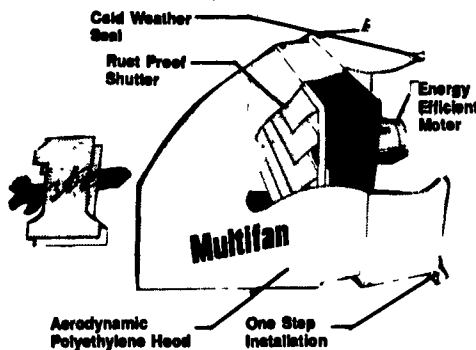
★ PA'S OLDEST & MOST EXPERIENCED SWINE & POULTRY BUILDING & EQUIPMENT COMPANY

CHECK YOUR CURTAINS



- Do They Have Tears or Holes?
 - Rotten or Brittle?
 - Manual or Automatic Winches Working?
- Call Today For Repair, Adjustment Or New Installation.

Multifan CONTROLLED VENTILATION



Multifan System 1

Excellent Ventilation With Variable Speed For Continuous Air Exchange

DOS MATIC PLUS

MEDICATOR

DP20
EZM



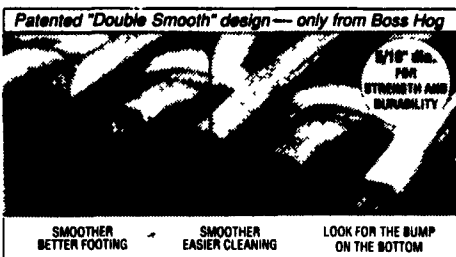
Water Driven Liquid Injector

NEW



BOSS HOG FLOORING

HEAVIEST WIRE FLOORING MADE



Patented "Double Smooth" design—only from Boss Hog
Boss Hog's patented "Double Smooth" design plus the strength and durability of its exclusive 5/16" diameter wire make this your best flooring buy! Insist on Boss Hog, the wire with the bump on the bottom. From the nation's largest manufacturer of animal flooring.



Dust/Mist Respirator

with double strap
WHY TAKE CHANCES: Help protect yourself against breathing in harmful

odors and feed and grain dust found in hog facilities. The dust/mist respirator features a nose cushion and a contoured nose clip for a more reliable seal for greater protection. It includes a collapse-resistant shell that is reliable in hot humid conditions. The dust/mist respirator is NIOSH/NSHA approved for dust and mists. The mask is a soft lightweight construction and will easily fit around eye glasses. Double strap ensures better fit for more protection.

Introducing The New—

PREG-TONE II PREGNANCY TESTER

NEW—Louder Tone!



● **SAFE**
All testing done externally—No harm to sow or litter!

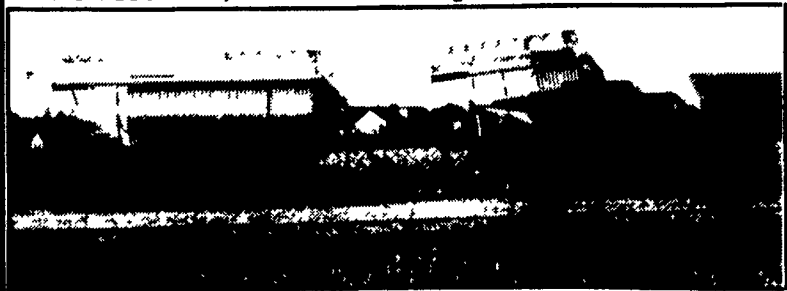
● **FAST**
Test completed in seconds! Confirm pregnant or open in less than 30 seconds! (At 30 days)

● **ACCURATE**
Accuracy proven by many Thousands of producers!

NOW!
Optional Earphone Attachment Available!

QUALITY CHORE-TIME BINS

We Assemble, Deliver & Set-Up Bins On Your Farm



Save 30% On Your Electric Bill with our 175 Watt Heat Bulb

Long Lasting 5,000 Hours

These 175 watt heat lamp bulbs put out as much heat as a 250 watt bulb but uses 30% less electricity at \$.10 per K.W.H. that's \$37.50 over the life of the lamp. Even better, if you run 40 lamps that's a savings of \$1,500.00.

15 bulbs/case
Bulbs are Heavy Duty Industrial type with high brass base and are resistant to urine and water splash damage, so you'll save even more on those costly breakage problems.

Full Line Of Parts In Stock For Your Poultry And Hog Needs



24 Hour Service

Swine & Poultry Systems Specialists

FARMER BOY AG.

410 E LINCOLN AVE

MYERSTOWN, PA 17067

PH. 717-866-7565

Hours: M-F 7:00-5:00;
Sat. 7:30-11:30

Check Our Warehouse Prices



WE SHIP UPS



7-24

SEE JAY OR PAUL FOR YOUR



JAY ZIMMERMAN — Sales

PARTS AND EQUIPMENT NEEDS



PAUL HIGH — Sales