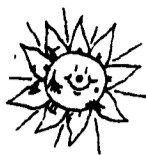


FARMER BOY AG INC.

Your Complete Swine, Poultry & Ventilation Equipment Center



**BEAT THE HEAT
WITH THE FOLLOWING
COOLING EQUIPMENT!**



Tunnel Ventilation For Maximum Cooling

WALL HOUSINGS: Galvanized slant housings with flanges for mounting to exterior wall for exhaust applications in tunnel ventilated and cooled buildings. The slant arrangement protects the components from weather, incorporates wiring knockout, provides convenient shutter mounting with quick release clips, includes outlet screen and enhances air flow through velocity regain. Housings are available knocked down crated with fan and shutters, motors shipped separately.



TRUCKLOAD SALE... FANS... 36" & 48"



**BELT DRIVE OR
DIRECT DRIVE PANEL FANS
FOR AGRICULTURE**



- Galvanized Construction
- Wide Cambered Propeller
- Riveted Blades
- Unique Captured Bearings — Strong formed bearing casing maintains proper alignment and spacing
- Vertical Support Frame — Supports both fan and motor to assist pulley alignment and easy adjustment
- Screens Pre-cut — For easy, quick mounting of motor
- Totally enclosed motors with shielded ball bearings, continuous duty type and energy efficient.
- Optional Discharge Diffuser Cone — Increases performance of fan without additional HP
- Optional Belt Tightener — Maintains proper belt tension for peak airflow

ENERGY EFFICIENT ENCLOSED MOTORS



- Heavy-duty totally enclosed motors with sealed ball bearings are designed for continuous work load.
- Available in two speeds
- Built-in thermal overload for low line-voltage protection on all single phase motors.

ALUMINUM SHUTTERS:

- All Aluminum Construction
- Counter Balanced Blades
- Nylon Bearing
- Stainless Steel Hinge Pins
- * Low Air Resistance *
- * Reduces Sticking in Dusty and Moist Conditions *



SEE US FOR YOUR REMODELING NEEDS

Compare the difference!

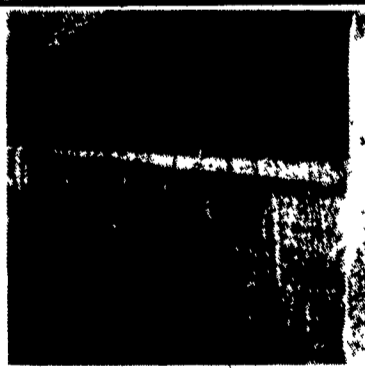


SCHAEFER Barn Kooler®

The only patented air circulation fan on the market!
Because of its design, it provides more air movement and therefore more cooling effect than any other circulation fan.

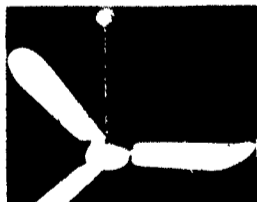


U.S. Pat #4,819,183

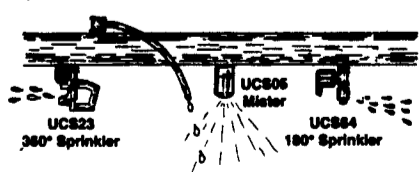
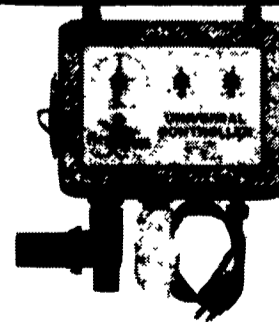


**CURTAINS-
Clear Or
Insulated
Hardware
Winches**

CANARM CEILING FANS



56" Metal Blades



UNIVERSAL CONTROLLER

- Simple and Automatic Control of Water Flow
- Dependable Solid State Circuitry
- Ideal Control For Livestock and Poultry Cooling Systems
- Line Filter and Protective Check Valve Included

BIG HUSKY

When it says **BIG HUSKY** its gotta mean quality

POLY WATERER

- 80 Gal capacity
- Total polyethylene
- No rust or corrosion

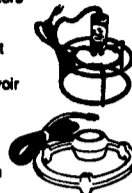
- Improved UV stability over competition
- Our dependable Dairin valve and float
- **TWO YEAR GUARANTEE**
- **STAINLESS STEEL CHEW GUARDS**
- Optional holdown brackets
- Optional heat for winter
- Large snap down 12" Cover
- Special grooved side for heater cord protection
- Gallon calibration molded into sidewall

- Two large 18 x 20 recessed drinkers
- Easy clean out with recessed drain plug
- Waterer is lightweight but 15% thicker and 20% heavier than competitors



STOCK NUMBER	CAPACITY	HEIGHT TO CENTER		HEAVY WEIGHT
		7 1/2"	36"	
WP-80	80 gal.	17" x 22"	2	60-6000 48-54

AH-483
1000 watt heater for reservoir



AH-49
250 watt heater for trough

HOG WATERER

BIG HUSKY SUMMER FOUNTAIN

- Built strong and rugged like our name.
- 100 gallon capacity.
- Five drinking spaces on each side.
- Drinking trough 3 1/4" deep, 6" wide.
- Trough made from heavy 18 gauge steel.
- Heavy galvanized steel body, lock seamed with heavy swedging.
- Drain plug on end for easy draining.
- Side straps made from stainless steel.

- Dependable float valve.
- 6" top fill hole.
- Heavy 11 gauge and pull.
- Oak skids.

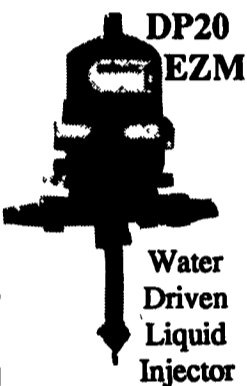


SPECIFICATIONS				
Number	Height	Width	Length	Shp. Wgt.
1480	33 1/2"	36"	45"	105 lbs

MEDICATOR

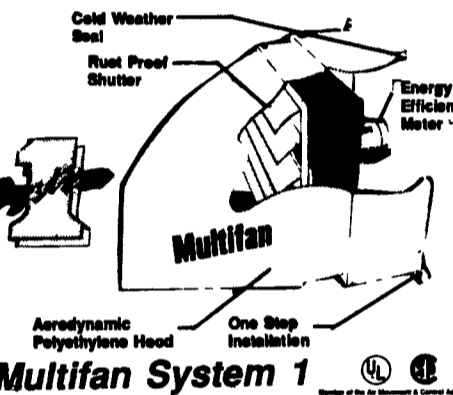
DP20
EZM

DOS MATIC PLUS



Water Driven Liquid Injector

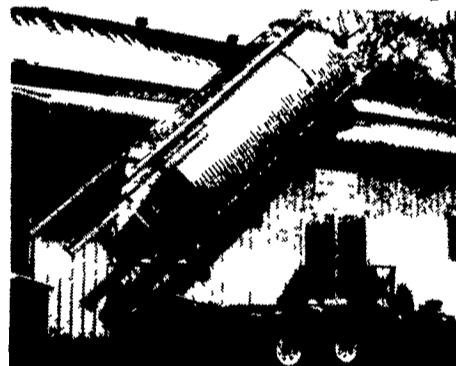
CONTROLLED VENTILATION



Multifan System 1

QUALITY CHORE TIME BINS

We Assemble, Deliver & Set-Up Bins On Your Farm



Picture Showing **CHORE TIME** Bin Set-Up With Hydraulic Bin Trailer



Models Available: Your Choice Of 6, 7, 9, 12 And 15 Ft. All Galvanized Hopper-Bottom Bins

Save 30% On Your Electric Bill with our 175 Watt Heat Bulb



Long Lasting 5,000 Hours
These 175 watt heat lamp bulbs put out as much heat as a 250 watt bulb but use 30% less electricity at \$.10 per K.W.H. That's \$37.50 over the life of the lamp. Even better, if you run 40 lamps that's a savings of \$1,500.00.

15 bulbs/case

Bulbs are Heavy Duty Industrial type with high brass base and are resistant to urine and water splash damage, so you'll save even more on those costly breakage problems.

SOLENOID VALVES ON SALE NOW!



The Nitrogen level of the pit waste will be enhanced by 300% with

PIT-BOSS™

Pit Additive To Reduce Pit Odor And Pit Solids



Full Line Of Parts In Stock For Your Poultry And Hog Needs



Swine & Poultry Systems Specialists

FARMER BOY AG. INC.

410 E LINCOLN AVE

MYERSTOWN, PA 17067

PH. 717-866-7565

Hours: M-F 7:00-5:00;
Sat. 7:30-11:30

Check Our Warehouse Prices

WE SHIP UPS



SEE JAY OR PAUL FOR YOUR



PARTS AND EQUIPMENT NEEDS



JAY ZIMMERMAN — Sales

PAUL HIGH — Sales