

**MAILBOX MARKET FOR SALE**

Stove elect. Jenn-Air slide in counter top \$250. Har. Ct. Md. 410-838-6196.

9 mth. old grade Jersey bull, sterling brass son, dam milking 54 lbs. Bedford Co. 814-224-2381.

4 lighted glass display cabinets 2-60" \$300 ea., 2-48" \$250 ea., 40" high. Harford Co. 410-452-8717

Onan 15 KW tractor driven alternator 110-240V circuit breaker voltmeter mounted on trailer, good cond. Somerset Co. 814-267-4100.

Angora goats, reg. whites & whites w/color genes, healthy, wormed, vaccinated, CAE negative, kids, adults, reasonably priced. Amity. 215-257-8847 eves.

6 checked giant, New Zealand white cross rabbits, breeding age, also banty chickens, excellent for flying. Schuyl. Co. 717-277-6878.

Hobart meat band saw \$975, 100 qt. steam kettle \$350, 2-door safe \$2500, plate compactor \$875, 3-row transplanter. North'd Co 717-286-5306.

Pair of partridge plymouth rocks & cornish chickens not old birds, show quality, good egg layers are fertile. Berks Co. 215-926-1314.

MF 540 combine w/grain & corn heads, Farmall H. York Co. 717-235-7391.

Char Lyn & vickers hyd. motors, JD 60 tractor power steering 75% rubber scraper blade. York Co. 717-927-6967.

955K Cat loader ex. cond., ready to work 10 ton trailer 3 axles w/dovetail new. Franklin Co. 717-762-6795.

5 breeding age heifers. Chester Co. Samuel F. Stoltzfus, 514 Lees Bridge Rd., Nottingham, Pa. 19362.

7-1000, 3-700 turkey feeders 43 cu. SS freezer 8x12 temporary walk-in 15 shelves, 300 gal. SS tank. Chestertown, MD. 410-778-1768.

Quick tach throat 410 MH, also grain head for same, best offer. Berks Co. 215-683-3238.

Case 600 gas wide front 3 pt. needs wheel bearing seals as is \$2150. Union Co. 717-524-9649, no Sunday calls.

IH 1800 Loadstar, 1966, air brakes, 5x2, 308 in-line six, 18" all steel flatbed dump (heavy duty), 3-stage twin cylinder hoist (heavy duty), 40,000 miles on rebuilt engine, \$3,300. Fred. Co. 301-845-8894.

Oliver 70 row crop single front wheel good 11x40 rear tires asking \$500 Middlesex Co. 908-329-6729.

Greenhouse glass panes in 50 yr old greenhouse sizes 20"x16", 24"x30", 24"x16". Milton Hershey School, Dau Co. 717-534-3507.

Handyman specials (50) lawnmowers \$10 ea., lawn tractors \$50 & up, misc. small engines, needing repairs. Clinton Co. N.J. after 3:30 & wkends 908-236-2297.

Hesston 9' self-propelled haybine, IH 10' G-P combine & 227 corn head, 30' bale elevator, 30' 5" PTO Cardinal auger. 4326 Copechan Rd., Schnecksville, Pa. 18078.

QH mare 15.2h, 12 yrs. dark chestnut excel. trail horse well built quiet & smooth. Chester Co. 215-692-6059.

Large pony harness has stiff saddle harness traces collar \$150, small pony harness \$85, ship UPS. Leb Co. 717-272-6814.

7'x16" flat wagon new paint, new floor, 9N Ford like new runs good, JD 3 pt. 3 btm. 16" plow. Montg. Co. 215-287-8748.

8 row Fisher tobacco sprayer also extra set of wheels & tongue for lower crop spraying, 2 yrs. old. Lanc. Co. Joseph S. Miller, 27 S. Vintage Rd., Paradise, Pa. 17562.

1961 Ford Galaxie 4 door 6 cyl., 47,000 miles, excel. cond., never run in snow \$4000. Bedford Co. 814-652-6536.

Real good NH #68 PTO baler w/wagon chute, knot-ters replaced, shed kept, \$1475, free delivery within 80 miles. Carroll Co. 410-848-0711.

Guinea pigs for sale as pets long & shorthaired very cute. Lanc. Co. Ivan Stoltzfus, 124 Meadow Creek Rd., New Holland, Pa. 17557.

40 gal. state water heater good cond., 5 yrs. old \$75 OBO. Lanc. Co. 717-768-8684.

Swing & gym set treated lumber, also sliding board new, \$475. Lanc. Co. 717-656-9596.

Gentle young Jersey family cow \$500. Lanc. Co. 717-529-6928.

Carriage w/ fiberglass box, in good cond. Omar Fisher, 434 Newport Rd., Ronks, Pa. 17572.

1987 2 horse trailer recent inspection, good cond., mechanically, some surface rust asking \$1650. Elizabethtown. 717-367-9340.

NH No. 7 silage wagon, NI flail chopper, 305 Chevrolet motor, completely rebuilt. Wanted: Patz 16' silo unloader. Schuyl. Co. 717-345-8815.

2-HT 600 Motorola UHF two-way radio's w/rapid chargers \$500, chopper for JD 6600 combine \$400. 717-866-4186.

Douglas fir & blue spruce Christmas trees ready to tag, nice shape, 1000's to choose from. Lanc. Co. 717-872-5263.

Big Augy mixing wagon, no scales, needs repair, \$2500. Warren Co. N.J. 908-475-4712.

277 NH hay baler w/wide pickup attachment fine teeth & hay thrower \$1500. Caroline Co. 1-410-820-2312.

Lull skid loader good cond., \$3500, Mustang 1200 skid loader for parts or repair \$1200. Blair Co. 814-832-2731.

Wheel weights for JD M front & rear, \$100. Howard Co. 301-854-6431.

JD potato digger new web power take-off hyd. lift on steel shed kept. Berks Co. 215-445-6426.

Five dwarf rabbits, 6 wks. old on July 15. 215-533-9008.

NH haybine, feed bag sewing machine, Farmall F-20 new Galliger battery fence charger, IH #33 hay cond., 2- 4x16 hyd. cyl. new. Adams Co. 717-528-4914.

AC garden tractor 12 HP 44" deck \$600, firewood \$35 pickup truck load, 7' dump body, \$250. Lanc. Co. 215-484-0137.

JD 17-7" grain drill grass seed & fert., \$300, Gehl 7'x14' 3 beater forage wagon needs work have parts, \$500. Berks Co. 215-683-5970.

Fence posts, 8' long, creosote treated, 50 or more \$3 ea. Berks Co. 215-682-2116.

Cute 1 yr. old male llama & 14' Van Dale silo unloader good cond., guaranteed for 1 yr. Lanc. Co. 717-859-3027.

1973 4230 engine complete needs crank shaft. Wanted 9N Ford for parts. York Co. 717-456-5484 anytime.

3 pt. hitch adapter for Int. snap coupler fits 200 series, \$175. Lanc. Co. 717-627-3609.

21- 30" barn fans, 5-3 ton bridge cranes, 40- 48x60 alum. barn windows. S.L. Stoltzfus, 3875 Old Phila. Pike, Gordonville, Pa. 17529.

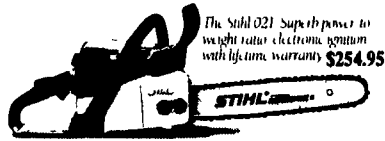
67 Ford Fairlane GT 390 335 HP 4-spd. excel. cond., 79 MGB excel. power train needs body work after 5. Luz. Co. 717-459-2771.

Cat 22 good running cond., needs paint, \$2200, Rodgers 35 ton low-boy trailer fixed gooseneck, \$3500. Carbon Co. 215-377-0372.

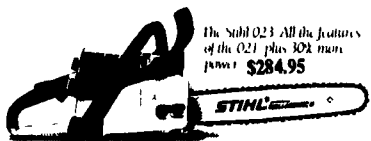
Manual saw mill fair shape for farmer, \$1000. Jonas K. Zook, RR 2 Box 119, Loganton, Pa. 17747.

AC C cult., \$35. Carbon Co. 215-377-2909.

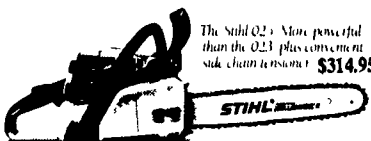
# Please Do Not Drool On This Page.



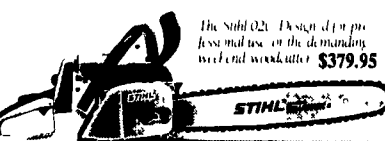
The Stihl 021. Superb power to weight ratio, electronic ignition with 1 yr. warranty. \$254.95



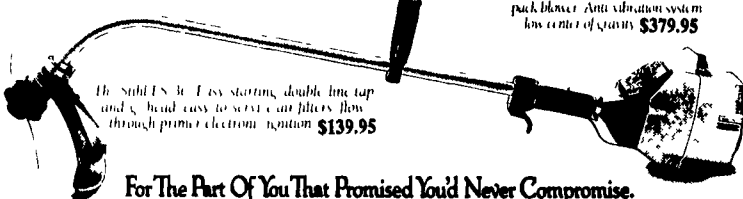
The Stihl 023. All the features of the 021 plus 30% more power. \$284.95



The Stihl 023. More powerful than the 021 plus convenient side chain tensioner. \$314.95



The Stihl 023. Designed for professional use or the demanding weekend woodcutter. \$379.95



The Stihl BR 106. Powerful backpack blower. Anti vibration system. Low center of gravity. \$379.95

The Stihl FS 3. Easy starting, double line tap and head easy to reset cut filters flow through primer electronic ignition. \$139.95

If your hearts desire isn't in this ad, you're not necessarily dead. But you're close.

We've got every man's fantasy here. Powerful, smooth-running machines that perform with precision and let you work with speed and efficiency.

But if, heaven forbid, you think a chain saw is a chain saw, or that all trimmers and blowers are alike, we suggest you visit one of the full-service Stihl dealers listed below.

Better yet, talk to any man who owns a Stihl. He'll give you a more enthusiastic sales pitch than any ad we could ever write.

For The Part Of You That Promised You'd Never Compromise.

**STIHL**

## Available at these servicing dealers

**Bechtelsville**  
PASSMORE SERVICE CENTER, INC.  
RD 1, Rt. 100  
215-367-9084

**Dallastown**  
TRI-BORO CONCRETE, INC.  
435 Locust St.  
717-246-3095  
1-800-632-9018

**East Earl**  
GOODS LAWN & GARDEN CENTER  
Route 23  
717-354-4026 Ext. 34

**Elizabethtown**  
MESSICK FARM EQUIPMENT, INC.  
Rheems Exit-Rt. 283  
Elizabethtown, PA  
717-367-1319, 717-653-8867

**Elm/Lebanon**  
BOMBERGER'S LAWN & GARDEN  
Elm: 717-664-4663  
Lebanon: 717-272-4155

**Ephrata**  
WES STAUFFER ENGINES & EQUIPMENT  
23 Pleasant Valley Rd.  
717-738-4215

**Ephrata, Hershey**  
HOLLINGER'S LAWN & GARDEN EQUIP.  
Ephrata, PA 717-738-1131  
717-656-2710  
Hershey, PA 717-533-4060

**Gap**  
GAP POWER EQUIPMENT  
Corner of Rt. 30 & Rt. 897  
717-442-8970

**Hamburg**  
SHARTLESVILLE FARM SERVICE  
RD 1, Box 1392  
215-488-1025

**Jonestown**  
BLUE MOUNTAIN ENTERPRISES, INC.  
Rt. 72 South  
717-865-2994

**Myerstown**  
EBLING LAWN & GARDEN SERVICE  
698 E. Lincoln Ave.  
717-866-6720

**Ono**  
SHUEY'S SALES & SERVICE  
Jonestown Rd.  
717-865-4915

**Ronks**  
A & B SALES & SERVICE  
370 Newport Road  
2 Miles South of Rt. 23  
Along 772 Thru Monterey

**Shippensburg**  
LEINBACH FARM EQUIP.  
1120 Rittner Hwy.  
717-532-5511

**Tamaqua**  
CHARLES S. SNYDER, INC.  
RD 3  
717-386-5945

**Whiteford MD**  
ENFIELD EQUIPMENT INC.  
720 Wheeler School Rd.  
301-879-5090

Distributed By  
Keystone Stihl

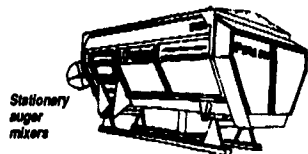
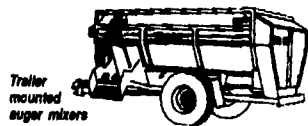
## NEW FINANCING! Patz NEW FINANCING!

24-36-48 Months To Pay On Any Piece Of Equipment Or Combination Thereof (Including Replacement Chains). 18% Down

### Mixing T.M.R. the Way You Want

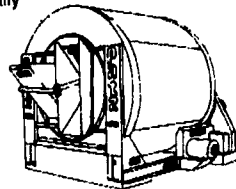
#### Open-Top Mixers

- Four notched augers mix fast—even square-baled dry alfalfa in limited amounts
- Self-aligning auger bearings mounted outside. Flanged auger tubes for easy removal.
- Planetary gear reducer and roller chain reduction power the augers. Roller chains operate in sealed oil bath
- On trailer models, the discharge door and discharge augers are controlled hydraulically



#### Tumble Mixers

- Tumble mixing plus a central spiral circulator moving ingredients to the back of the drum while flitting moves ingredients forward.
- No internal bearings.
- Low maintenance — only 3 grease fittings.



"36 Years of financing farmers needs."

## BALE CHOPPING MADE EASY

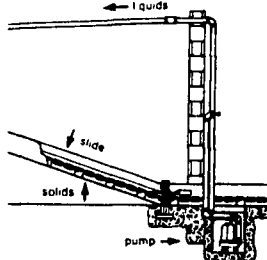


Affordable Financing

- Reduce feeding waste and increase palatability
- Do the job fast with a tractor-powered Patz® Big-Bale Chopper
- Models for 4-foot to 6-foot diameter round bales or several rectangular bales
- Patented horizontal chopping method requires less horsepower
- A spinning rotor with knives chops as the tub rotates
- Easy start of chopper knives with freewheeling lifting disk
- Two side-discharge ports
- Optional high vertical-discharge chute
- Optional flexible hose for restricted access and mulching

Ask to see the Patz® Chopper video. Then ask for a demonstration.

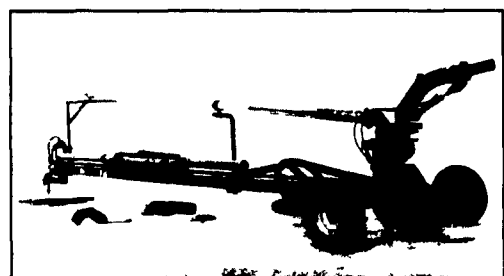
## Thinking Manure Auger? Consider a Better Alternative — 9000/9000S Liquid Transfer System



Removes liquids from the gutter while manure goes up the slide.

- Liquids flow through a screen in the gutter bottom
- Submersible pump moves the liquids through 2" PVC pipe to manure spreader or other discharge point.

- Solves overflow problems of leaky drinking cups and pipes
- Also, for milk waste water and other liquids
- Installs easily anytime



## Dual Agitation Saves Time Patz Model 477 Lagoon Pump

- Propeller agitates under the surface while nozzle breaks up surface crust.
- Agitation nozzle rotates 340 degrees
- 540 or 1,000 PTO speed
- Loads 3,200-gallon tanker as fast as 90 seconds
- Agitates while loading
- Up to 5 feet of height adjustment
- 25-ft and 35-ft models available
- Financing available

## SEE YOUR NEAREST PATZ DEALER

**ALEXANDRIA**  
MAX ISENBERG  
814-669-4027

**BALLY**  
LONGACRE ELECTRIC  
215-845-2261

**BEDFORD**  
BENCE'S FARM EQUIP.  
814-623-8601

**BELLEFONTE**  
LUCAS BARN EQ.  
814-383-2806

**BELLEVILLE**  
MILLER-LAKE Inc.  
717-935-2335

**HOP BOTTOM**  
LENOX FARM SUPPLY  
Kurt Kulick  
717-289-4349

**LEBANON**  
CEDAR CREST EQUIPMENT  
717-270-6600

**MECHANICSBURG**  
JOHN JONES  
717-766-8582

**MIFFLINTOWN**  
ZUG FARM & DAIRY EQUIPMENT  
717-463-2606

**ORANGEVILLE**  
FRANKLIN D. HESS FARM EQUIPMENT  
717-925-6939

**QUARRYVILLE**  
UNICORN FARM SERVICE  
James E. Landis  
717-786-4158

**SHIPPENSBURG**  
WITMER EQUIPMENT SERVICE  
717-532-6139

**SOMERSET**  
GROVE EQUIP. SALES  
Mark Knepper  
Cliff Lynn  
814-445-6306

**HAGERSTOWN, MD**  
TRI-STATE FARM AUTOMATION  
301-416-7340

**KENNEDYVILLE, MD**  
PINDER SERVICE CO.  
410-778-0799

**WESTMINSTER, MD**  
C&G FARM AUTOMATION  
Carrol & George Gesell  
410-775-7300  
410-848-3622

**WHITEFORD, MD**  
ENFIELD EQUIP.  
410-838-0480

**POUND, WI**  
PATZ SALES, INC.  
414-897-2251

**DISTRICT MANAGER**  
Agri Bee Inc.  
James Blisku, Pres  
814-696-9447



\* New Dealers