

FOCUS



Dixie L. Burris, Membership Development,
Call 1-800-1911-1131 for information.
Pennsylvania Dairy Herd Improvement Association
DHIA Service Center, Orchard Road, University Park, PA 16802

How Does Your Herd Compare?

STATE COLLEGE (Centre Co.) — This data is pulled from Pennsylvania DHIA's mainframe computer each week. It is a one-week summary representing approximately one-fourth of the herds on test, as they are tested monthly.

These data are valuable from a business management standpoint and can be used for comparing your operations to the averages from almost 1,400 herds across the state.

DHIA Averages for all herds processed between 6/26/93 and 7/03/93

Number of Herds Processed	1,132
Number of Cows Processed	69,469
Number of Cows Per Herd	61.3
Milk Per Cow (Lbs)	18,383
%-Fat	3.70
Fat Per Cow (Lbs)	680
%-Protein	3.19
Protein Per Cow (Lbs)	588
Average Days in Milk Per Cow	317

Garrity Named

(Continued from Page A1)

meeting in Edinboro.

James Garrity, director of finance and personnel, has been appointed interim manager.

Pa. DHIA is a leading provider of dairy management services and intends to move forward with the programs they are currently working on. Laptop computers allowing on-farm data entry and same-day, on-farm reporting are currently being introduced through the technicians.

A recently installed laboratory

control system is helping Pa. DHIA to become one of the most efficient labs in the DHIA system.

A help center is being set up to have technicians and members get answers to their problems and assist in adjusting to the new technology available to help handle the dairy herd.

Pa. DHIA is committed to serving the members needs. Communication between members and directors and staff is very important as DHIA nationally enters a competitive environment.

The Pa. DHIA board greatly appreciates the support of membership and the effort of the Pa. DHIA staff.

More Pa. DHIA Stories This Week

Related DHIA stories appear in this issue on the following pages: "Pa. DHIA Appoints Field Staff" on C4; "Aden Accepts Manager Role" on C4; "Bigelow Is Coordinator" on C5; and "Shenk Accepts Manager Role" on C6. Also, the list of the top producing herds for Pennsylvania in June starts on page C8.

*Value for CWT Milk(\$)	12.98
*Value for CWT Grain(\$)	7.85
*Value for CWT Hay(\$)	4.27
*Value for CWT Silage(\$)	1.53
*Value for Pasture Per Day(\$)	.29
*Value for Milk Per Cow Per Year(\$)	2,387
*Feed Consumed Per Cow Per Year(Lbs)	
A: Grain	7,252
B: Hay	2,150
C: Silage	15,113
D: Day Pasture	62
*Feed Cost Per Cow Per Year(\$)	
A: Grain	569
B: Hay	91
C: Silage	231
D: Pasture	18
*Total Feed Cost Per Cow Per Year(\$)	911
*Income Over Feed Costs Per Year(\$)	1,475
*Grain to Milk Ratio	1:2.5
*Feed Cost Per CWT Milk(\$)	4.96
Avg Level For 999 SCC Herds	359,034

*Member generated figures

PA DHIA Calendar of Events

JULY

23,24 Technician Summer Conference, Danville

AUGUST

AgProgress Days, Rock Spring

SEPTEMBER

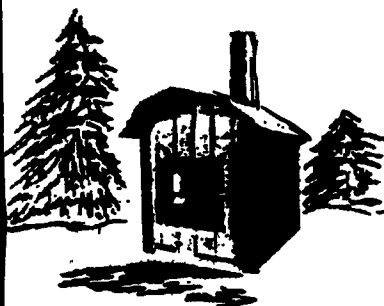
29,30 State Board Mtg., State College

NOVEMBER

- 1 SE District Mtg., Berks Ag Center
- 2 SW District Mtg., Ramada Inn, Somerset
- 3 C District Mtg., FamilyHouse Restaurant, Mifflintown
- 4 NE District Mtg., Pink Apple Restaurant, Tunkhannock
- 5 NW District Mtg., Bonanza Restaurant, Franklin

DRASTIC FUEL COST REDUCTIONS

WITH THE ATTRACTIVE OUTSIDE WOOD & COAL HEATING SYSTEM



No Dirt or Smoke Inside
Huge Savings On Fuel Cost
Large Capacity
Safe C Pressure System
Heats Domestic Hot Water
Hot Air or Hot Water Compatible
Square Or Oval Models
Freeze Proof
Good Looking
Oil or Gas Backup (Optional)
Air & 12 Volt Operation

SALES & SERVICE
R & K SERVICES
RD #4 Box 4262A
Mohnton, PA 19540

Call For Free Literature
215-856-1386
Rod or Kathy



AIR TOOLS IN STOCK!
Please write for prices.
Prompt UPS Service
Beller's Pneumatics
718 Vintage Road
Christiana, PA 17507

Power Hungry?



The Polaris Big Boss 6x6 is the toughest vehicle we make. Thanks to four-wheel drive with on-demand six-wheel traction. And a 244cc fan-assisted air-cooled engine. Plus a heavy-duty tow hitch, 650-pound tilted and dual-control hydraulic disc brakes. And its amazing 156-inch turning circle gives this 6x6 the power to do almost any job anywhere.

WARNING: ATV's can be hazardous to operate. These are full-size machines designed to be ridden only by adults age 18 and older. For your safety: Always wear a helmet, eye protection, and protective clothing. Be particularly careful on difficult terrain. Polaris recommends that all ATV riders take a training course. For safety and training information, see the dealer below.



LeRoy's Snowmobiles
R.D. #1, Box 32 • Highpoint Rd.
Cochranville, PA 19330
215-593-6280



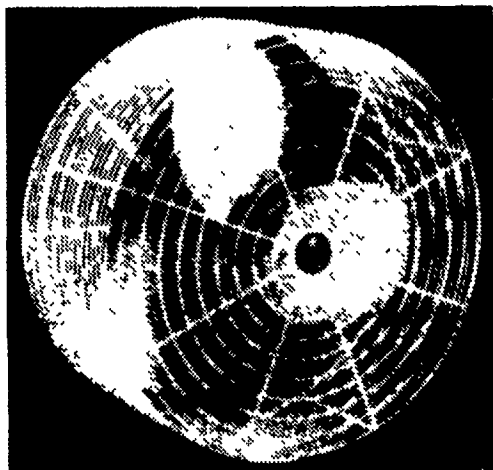
©1991 Polaris Industries L.P.



BARN COOLER FANS

20", 24", & 36" IN STOCK

COOL DOWN WITH A COOL PRICE



WILL SHIP ANYWHERE

Receive Year-Round Benefits For You And Your Livestock w/a Schaeffer Barn Kooler



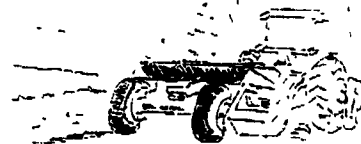
Cedar Crest Equipment

Two Convenient Locations

608 Evergreen Rd.
Lebanon, PA 17042
(717) 270-6600

RD 2 Box 271
East Earl, PA 17519
(717) 354-0584

WE CUSTOM DESIGN SYSTEMS FOR YOU



Expert Conservation * Excavation * Restoration of Your Land in York & Northern Harford Counties

- | | |
|--------------------------------|-------------------------------|
| SOIL CONSERVATION CONSTRUCTION | FARMSTEAD RENOVATION |
| * Waterways | * Fence Row Removal |
| * Diversion Terraces | * Land Clearing & Reclamation |
| * Drainage System | * Meadow Mowing |
| Maintenance & Repair | * Septics & Foundations |
| * Farm Ponds | |

PROFESSIONALS IN THE PROFESSION OF LAND IMPROVEMENT

Call: 717/382-4878
or mobile 873-3333