

# Late Season Corn Diseases

(Continued from Page 11) linear chainlike lesions. The the state and probably only (spot) is characterized by long disease is observed throughout rarely causes a significant yield



Northern corn leaf blight is characterized by long, boat-shaped lesions.



## CORN TALK NEWS

PENNSYLVANIA MASTER CORN GROWERS ASSOC., INC.

loss. Resistant hybrids are the best method of control.

Nitrogen deficiency is a common late season problem that is characterized by an inverted yellow "V" that begins at the tip and moves toward the stalk. Some N deficiency on the lower 2-3 leaves near the brown silk stage is normal and indicates your N fertility program is

on target. If N deficiency symptoms approach the ear leaf, this is an indication that too little N was applied or N was lost during the season.

By learning to identify a few of these late season corn problems, you will be better able to address them in next year's management program and that should lead to a better crop.



The lesions of gray leaf spot resemble small paper matches.

### FROM HARDPAN SHATTERING TO RESIDUE-COVERED FINISHED SEEDBEDS... SUNFLOWER EXCEEDS YOUR TILLAGE NEEDS

#### SUNFLOWER RIPPERS

- ★ VERSATILE
- ★ ADAPTABLE
- ★ TOUGH
- ★ PROVEN

Check Out These Features:

- ✓ 10'-18' Frame
- ✓ 3-9 Shanks On Infinite Spacing From 15"
- ✓ 36" Under-Frame Clearance
- ✓ Heavy Duty Trip Mechanism Allows Shanks To Trip Back 36"

- 10' & 14' Frames In Stock
- We Will Install Your Choice Of Number Or Shanks To Match Your Tractor Horsepower

- ✓ 5100 lb. Max. Point Pressure
- ✓ 2" Slip-In Spindles On 2 Or 4 Wheels
- ✓ 16" Upward Tripping Clearance On Auto Reset Shanks
- ✓ GREAT PRICE VALUE!!



"Boiling, uplifting action in the soil allows water to enter and be retained in subsoil, minimizing runoff. Yield increases up to 10 bu. more corn per acre," Lancaster Co. farmer.

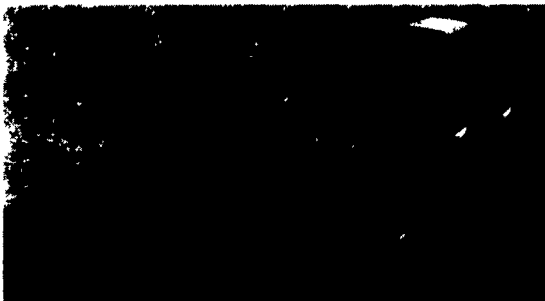


8'9" to 18'9" Widths Available!

CHECK OUT THIS SUPERIOR NEW PRODUCT FROM SUNFLOWER!

- New extended frame length for better trash clearance
- Auto-reset trip
- Heavy-duty 4"x6"x $\frac{3}{4}$ " mainframe construction.
- Hydraulically controlled coulters gangs (optional) can be adjusted on the go or raised completely in clean soils

Four inch twisted shovels provide maximum residue incorporation. Optional 2" reversible shovels team with hydraulically adjustable coulters to give maximum residue cover while "perforating" plow pan to encourage water retention.



#### SUNFLOWER

##### Series 6000 LAND FINISHER

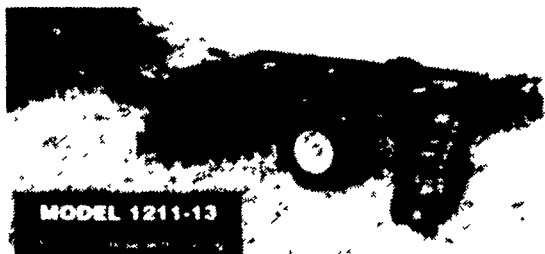
The RIGHT combination in one-pass tillage. The New Sunflower 6000 Series Land Finisher performs three operations in one pass. It discs, cultivates, and finishes the seedbed all at once.

Working widths from 13- to 37 feet.

Perfect followup tool for any of your primary tillage tools. In fact, where crop residue is not extremely heavy, very satisfactory results are achieved with one pass of this tool.

#### MODEL 1211-13

If your tillage program requires the use of a disc harrow, look no further. Sunflower disc harrows are proven performers. The superstars of the Sunflower lineup! Try one today.



MODEL 1211-13

**BINKLEY & HURST**  
BROS. INC.

133 Rothsville Station Rd. 1-800-IT-PAYS U  
Lititz, PA 17543  
(717) 626-4705



After Hours Emergency Call: (717) 626-0885 (717) 626-5159 (717) 859-8768  
Machinery Sales: M-F 7 to 5 Sat. 7 to 11:30 Sun. Closed - Lord's Day

## PEERLESS

FOR TODAY'S FEEDER

**COMPUTERIZED FEED EQUIPMENT ROLLED FEED IS BETTER!**

- INCREASED BUTTERFAT
- FASTER RATE OF GAIN
- LOW POWER REQUIREMENT
- REDUCED DUST & FINES

ROLLER MIXER & HAMMERMILL      EAR CORN SILO MILL      STATIONARY ROLLER MILL

**ROLLER AND STATIONARY HAMMERMILL SYSTEMS**

**F.M.I.**      727 Furnace Hills Pike      717-626-2680  
(Feedmobile)      Lititz, PA 17543      1-800-528-6693

### CUSTOM HANDLING OF FREE-FLOWING FEED & GRAIN

Transfer Up To 3,000 Bu. Per Hour

Transfer Materials To And From Trucks, Railroad Cars, Bins or Pits. A Great Unit For Spill Clean-up!

For More Information, Contact:

**EMM**      EASTERN MOBILE MILLS  
Lititz, Pa.      717-626-4762  
Nationwide - 1-800-288-2081