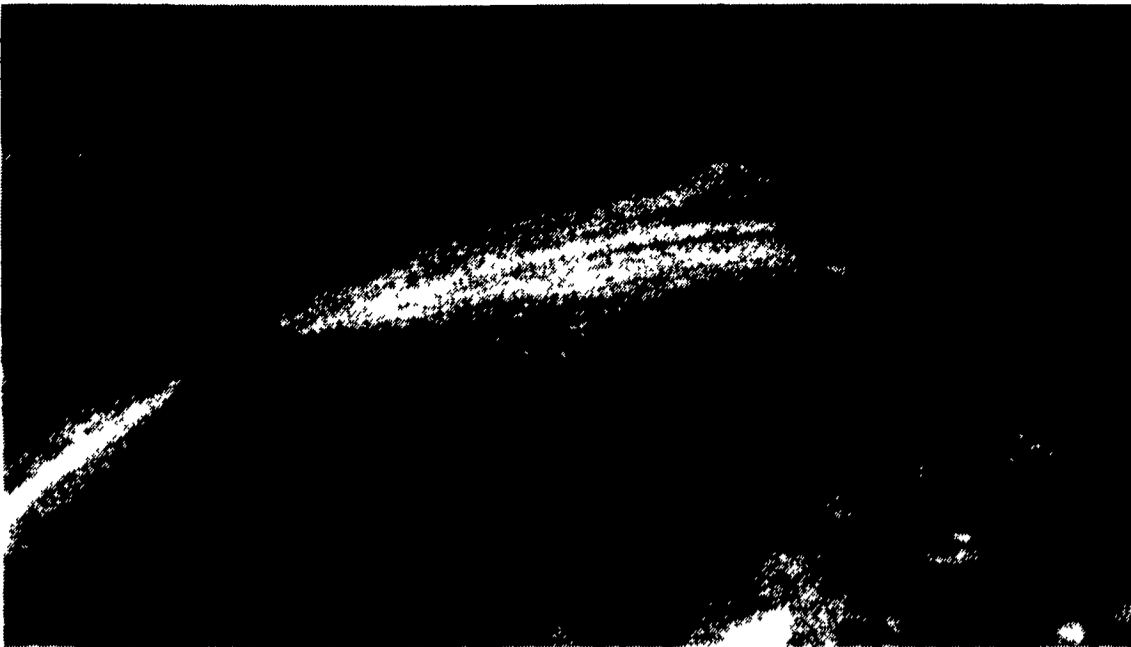




CORN TALK NEWS

PENNSYLVANIA MASTER CORN GROWERS ASSOC., INC.



The symptoms of nitrogen deficiency are inverted yellow "Vs" on the lower leaves.

Late Season Corn Diseases

Greg W. Roth
John E. Ayers†

An important part of corn production is evaluating your crop and making the appropriate management changes in the following season. Being able to assess some common late season corn diseases will help in making management changes for next year.

Items that should be considered for disease management include tillage, hybrid selec-

tion, and early harvest of affected fields. Three of the most common corn leaf diseases you may encounter include gray leaf spot, northern leaf blight, and northern leaf spot. Another common late season problem that could be confused with a disease is nitrogen deficiency.

The symptoms of gray leaf spot are gray, rectangular lesions that are restricted by the leaf veins. An individual lesion

resembles a paper match. Control measures include rotation, tillage, and planting resistant hybrids. Most severe cases occur in fields of continuous, no-till corn where air drainage is poor. Fields along creeks and rivers are particularly vulnerable to gray leaf spot because of the extended periods of dew.

Northern leaf blight is found throughout Pennsylvania and is characterized by long boat shaped, grayish-green to tan lesions. Lesions first appear on lower leaves, progressing to upper leaves over time. A few years ago, the incidence and

severity of this disease increased with the new race of the pathogen. Higher levels of genetic resistance to the new race have been incorporated into many new hybrids, so in the last few years, disease caused losses have been limited. Potentially, however, this disease can result in yield losses. Avoiding inoculum by rotation or tillage, along with planting resistant hybrids, are the best methods of avoiding this disease.

Northern leaf spot (also called Helminthosporium leaf

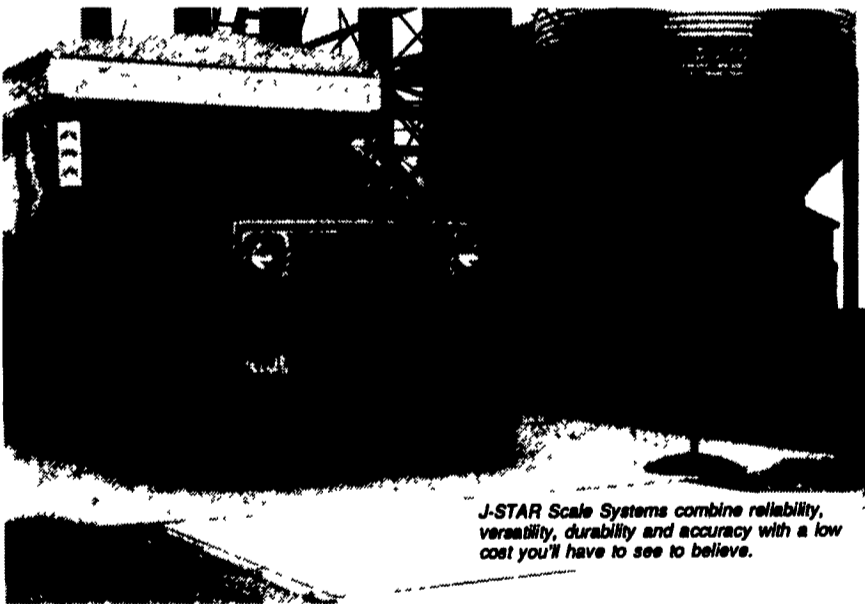
(Turn to Page 13)



Northern leaf spot is identified by these chainlike lesions on the leaves.

ATTENTION CORN FARMERS:

A Scale System Priced & Designed For The Farm



J-STAR Scale Systems combine reliability, versatility, durability and accuracy with a low cost you'll have to see to believe.

The easy weigh

J-STAR 7'x10' Platform Scale Systems: accurate axle weights...at surprisingly-low cost

Now, when you need precise weight information, load after load — for efficient, cost-effective management of your farm, over-the-road or custom hauling operation — J-STAR makes it easy. With accurate, reliable scale systems at a fraction of the cost of scales you may have considered in the past. This "easy weigh" lets you...

- Accurately check axle and vehicle weights.
- Assure maximum weights, every load, without risking fines for running over legal limits.

- Make more efficient use of your trucks by consistently hauling at or near capacity, without underhauling.
- Monitor load placements and weights at the time of shipment.
- Verify the weight of bulk commodity purchases.
- Monitor crop yields.
- Handle up to 40,000 or 50,000 pound loads per tandem or single axle.
- Assemble and install the J-STAR scale system where needed... quickly and easily.

J-STAR

Rugged J-STAR Scale Systems are constructed of heavy gauge structural steel for years of reliable weighing.

Another surprise: all this performance capability

For a scale system this economical, you might expect J-STAR to scrimp on features. Not so. Take a look at all you get:

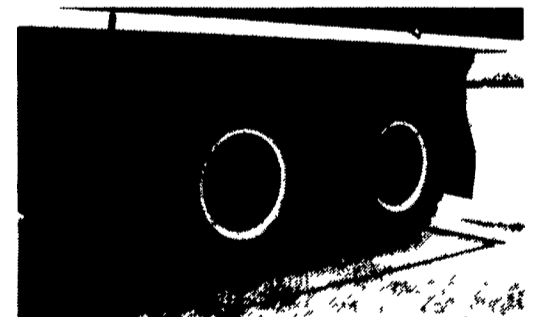
- Standard 7 ft. x 10 ft. platform, sized to easily accommodate tandem axles.
- Two models to choose from, with 40,000 pound or 50,000 pound capacities per tandem or single axle.
- Rugged J-STAR weigh beams with 1/4 of 1% accuracy (99.5% accurate).
- Choice of accurate, reliable scale indicators to match your weighing needs and preferences.
- Shock-resistant strain gauge load cells for long-lasting, dependable performance
- Engineered and constructed of heavy structural steel for years of dependable service and demanding use.
- Portable operation, if desired, because of the system's 12-volt DC electronics, 3-point tractor hitch lift attachment and detachable ramps (40,000 pound model only); and low-profile, easy-on-and-off platform design.

All this plus J-STAR's years of expertise in building hard-working, long-lasting equipment makes a J-STAR Scale System the logical choice for your operation.

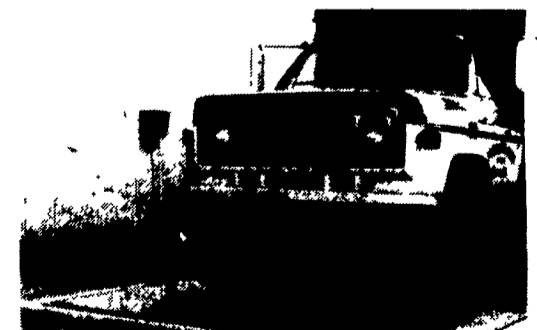
A choice that gives you a proven management tool that can provide vital information to help you consistently make better business decisions. The "easy weigh."

Options and weighing versatility

- Detachable ramps.
- 3-point tractor hitch lift attachment (40,000 pound model only).
- AC/DC power converter for stationary operation.
- Indicator stand.
- Radio-controlled remote operation (Model 15 only)
- Printer for batch or other weighing applications (Model 15 only).
- Computer interface capabilities (Model 15 only).



7 ft. by 10 ft. weighing platform easily handles tandem axles.



Scale indicator can be mounted in an outside environment on a nearby building or on the optional indicator stand.



LAPP'S BARN EQUIPMENT

5935 OLD PHILADELPHIA PIKE, GAP, PA 17527
PHONE: 717-442-8134 WE SERVICE WHAT WE SELL

Radio Dispatched Trucks

