

**3 SILOS AND UNLOADERS**

**MAY-CO PLASTIC SILO LINERS**

Liners Are Easy To Install And Can Be Installed In Silos With Or Without Unloaders. We Will Install Liners Upon Request For A Reasonable Fee. Some Benefits When Using A Silo Liner Are:

- 1 More Goes In Silo
- 2 Eliminates Shrinkage
- 3 Eliminates Mold
- 4 Eliminates Heat Damage
- 5 Increase Digestible Protein
- 6 Increases Energy
- 7 Increases Production
- 8 Smells And Tastes Better

(717) 569-1011

**MAY-CO SUPPLY CO., INC.**  
430 Biscayne Rd., Lancaster, Pa. 17601

**DETWEILER SILOS**

New Concrete Stave Silos  
New and Used Extensions  
All Types Silo Repair  
Teardown and Rebuild  
Silo Relining

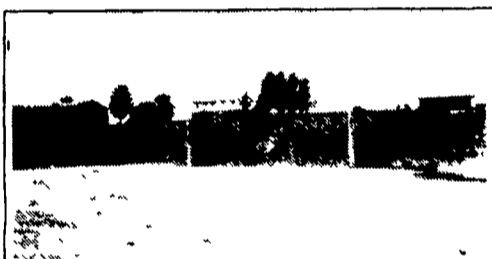


Fiberglass Chute  
is Standard  
Equipment

Write or call:

808 Oakville Road, Newville PA 17241  
(717) 532-3039

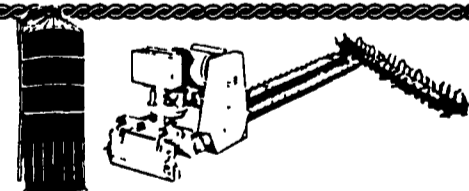
**Bunker Silos**



Precast Concrete Bunker Silos available in center divider T-walls and our new outside T-wall panels that can be bolted together or A-frame panels.



477 East Farmersville Rd., New Holland, PA 17557  
(717) 355-2361



**PARTS & SERVICE for HARVESTORE® UNLOADERS & STRUCTURES**  
\* **REXNORD AND HITACHI CHAINS**

\$890 20' Galv. Cutter Chain  
\$870 20' Galv. Conveyor Chain

2 1/2 Yr. Warranty

**DeMuth**  
**AGRI-PRODUCTS**  
FILLING EQUIPMENT

\* **Goosenecks \* Blower Pipes \* Distributors**

9x20 Galv. Gooseneck, list price \$705 ..... \$418  
12x20 Galv. Gooseneck, list price \$873 .... \$530  
Kwik Pipe ..... \$38  
6' Slip Pipe ..... \$41  
20 Ft. Breather Bags ..... \$325

**MARVIN ZIMMERMAN**  
Litz, PA 17543  
717-733-4449  
Not Affiliated With A.O. Smith



Now With New Expansion Ring For Easy Installation

If Your Silo Needs New Life...

Try Our Poly Silo Liners

- THE ADVANTAGE OF A POLY LINER -
- Spoilage is reduced around doors.
- Feed is exposed to less oxygen - better fermentation.
- Allows storage of high moisture grains or dry grains in a conventional silo.
- Delays repair or replacement of corroded silos.
- Prevents corrosive acids from contacting silo wall - extends silo life.
- Quick installation.
- Effectively seals silos from air and weather.

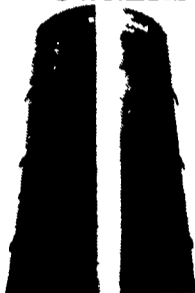
The Liners Are Manufactured To Fit Most Standard Diameter Silos.

**ORDER NOW FOR JULY DELIVERY**  
**CALL 1-800-468-4909**

**AARON GROFF and SON**  
FARM & DAIRY STORE

103 Clearview Dr., Ephrata, PA 17522 Phone (717) 354-4631  
Store Hours - Mon., Thurs. & Fri. 7 A.M. to 8 P.M.  
Tues. & Wed. 7 A.M. to 5 P.M.; Sat. 7 A.M. to Noon

**ATTENTION HARVESTORE® OWNERS**

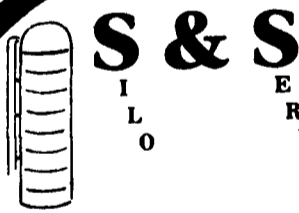


Are you tired of digging out that old bottom unloader that's eating up all your profit? Let Silo Conversion Company convert your Harvestore® into a usable and profitable top unloading structure.

Ask these Harvestore owners how their silo works w/the top unloader.

- Elton Metzger (717) 323-3803 Linden, PA.
- Bruce King (717) 297-2803 Troy, PA.
- Phillip Bennetch (215) 589-5461 Newmanstown, PA.
- Tom Sedlock (814) 265-0968 Brockway, PA.
- Frank Squire (717) 942-6444 Nickolson, PA.

Price includes brackets and installation of hexpod or tripod.  
Hexpod or tripod supplied by owner  
**Call Jim Beckham**  
**At SILO CONVERSION COMPANY**  
**812-944-7102**



**ATTENTION FARMERS**  
Strengthen And Reseal Your Silo With Shotcrete

**STRONGER AND WILL OUT LAST PLASTER**



IS YOUR SILO READY TO BE FILLED WITH GRASS SILAGE?

PLEASE CHECK YOUR FILL PIPES AND DISTRIBUTORS NOW BEFORE FILLING SEASON

S&S Silo Service prepares the silo surface by using a 3,000 lb. pressure washer, thus making the silo moist, making a much better surface to bond shotcrete. After shotcreting, S&S always takes away any roughness by applying a steel trowel finish.

The excellent bonding of shotcrete to the silo will keep out moisture and prevent mold from growing on the side of the silo.

**SCHEDULE NOW BEFORE FALL RUSH**

Call Now For A Free Estimate

**S & S SILO SERVICE**

RD 2, Box 91A Honey Brook, PA 19344

(215) 273-3993

MYRON STOLTZFUS SOLOMON ZOOK  
(717) 768-3993 (717) 295-5460

**TRAK STARS**



**Feed-Trak™**

High-Capacity Belt Feeder

It's hard to imagine so much feeder at such a good price. Let your Starline Dealer show you why Feed-Trak is so efficient, dependable and quiet. New feeder features simple design, exclusive smooth-running track and trolley system and high-capacity STARglider™ V-Plow. This feeder is right on "trak"!

**Cen-Trak™**

Power Drive Unloader

Meet Cen-Trak! The new and better concept in single-cable unloaders. Simple, dependable power drive design eliminates the problems of other high-torque, center-drive machines. You get economy and faster, high-capacity unloading with fewer trips up the silo. Only from Starline!



Built to last, priced to sell.

**SPECIAL! - J-Star Replacement Augers For Van Dale**

• **USED RISSLER 190 MIXER..... \$6,500**

Full Line  
Parts  
Department  
For Starline

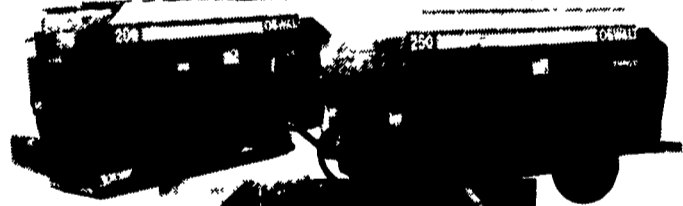


**DONALD R. NISSLEY**

RD #1, Willow Street, PA  
(Corner of Rt. 272 S. & Byerland Church Rd.)  
(717) 786-7654

**PICKY. PICKY. PICKY.**

**YOU JUST CAN'T MATCH OUR MIX**



**NEW**

**TMR Ruffage Master**

**OSWALT**  
Mixers by J-STAR

These new Oswalt® four auger Model 200/250 mixers are designed to process and mix all feeds, including baled hay, into a fully-blended TMR...better than anyone!

The aggressive, notched, 20"-diameter, full-pitch, four auger mixing pattern, dual shear shelf design and exclusive, self-lubricating Tuff-Glide® liners help feed materials flow more freely, reducing horsepower requirements and virtually eliminating material hang-ups and dead spots.

**Pick Your Best Payment Plan.**

<b>MORE WAYS TO BUY THE BEST</b>	<b>7.9%</b> 24 or 36 Months	<b>0%</b> 12 Months	<b>7.9%</b> 36 Months LEASE	<b>BIG CASH DISCOUNTS</b>
----------------------------------	--------------------------------	------------------------	--------------------------------	---------------------------

See your Oswalt Dealer today!



**LAPP'S BARN EQUIPMENT**

5935 OLD PHILADELPHIA PIKE, GAP, PA 17527

PHONE: 717-442-8134

WE SERVICE WHAT WE SELL  
— Radio Dispatched Trucks —

