

New England Shell Eggs

Wednesday, July 7, 1993

NEW ENGLAND: Prices were unchanged. Trade sentiment was cautiously steady. Demand was mostly moderate, better in resort areas. Supplies were generally adequate.

PRICES PAID TO PRODUCERS, CASES EXCHANGED, GRADE YIELD BASIS, BROWN EGGS LOOSE, AT FARM, CENTS PER DOZEN.

RANGE JUMBO .83-.86, EXTRA LARGE .76-.79, LARGE .68-.71, MEDIUM .49-.52, SMALL .23-.26.

BOSTON: PRICES TO RETAILERS, SALES TO VOLUME BUYERS, USDA GRADE A AND GRADE A, BROWN EGGS IN CARTONS, DELIVERED STORE DOOR, CENTS PER DOZEN RANGE EXTRA LARGE .95-.97, LARGE .87-.89, MEDIUM .68-.70.

Friend's Stockyard Inc.

Accident, Md. 21520

Report Supplied by Auction

July 5, 1993

STOCK BULLS AND STEERS (200-500 LBS.) 70.00-98.00.

STOCK HEIFERS 65.00-82.00.

SLAUGHTER STEERS GOOD TO CHOICE 72.00-76.25; MEDIUM TO

GOOD 66.00-71.75; HEAVY CHOICE OVER 1450 LBS. 72.00-74.50.

HOLSTEIN STEERS HEAVY 61.00-67.50; LIGHT 55.00-62.50.

SLAUGHTER HEIFERS GOOD TO CHOICE 71.50-75.00; MEDIUM TO GOOD 64.00-71.00.

BULLS HEAVY 58.00-68.00, LIGHT 50.00-74.00.

COWS FEW HIGH DRESSING 51.00-55.00; UTILITY HOLSTEIN 48.50-55.00, CANNERS 44.00-52.50, COMMERCIAL TO GOOD 45.00-50.00, CULL COWS 44.00 AND DOWN.

VEALS GOOD TO CHOICE 72.00-110.00, MEDIUM TO GOOD 50.00-70.00.

BOB CALVES 50.00 AND DOWN. HOLSTEIN BULL CALVES, RETURN TO FARM (90-120 LBS.) 120.00-185.00.

HOLSTEIN HEIFER CALVES, RETURN TO FARM (100-120 LBS.) 150.00-215.00.

BEEF X CALVES, RETURN TO FARM, UP TO 185.00.

HOGS: TOP QUALITY 46.40-47.50, HEAVY 46.00-47.00, LIGHT 37.00-43.00.

SOWS 30.00-34.50.

MALE HOGS: 27.00-35.00.

LAMBS: 50.00-56.00.

SHEEP: 18.00-24.00.

LIVESTOCK PRICES ARE ALL GIVEN PER HUNDREDWEIGHT!

Pa. Grain

Monday, July 6, 1993

Report supplied by PDA

COMPARED WITH LAST MONDAY'S MARKET FOR SOUTHEASTERN, CENTRAL, AND SOUTH CENTRAL PA: CORN STEADY TO .10 HIGHER; WHEAT STEADY TO .20 HIGHER; HARVEST UNDERWAY IN SOUTHERN COUNTIES; BARLEY STEADY TO .05 HIGHER; OATS MOSTLY STEADY; SOYBEANS MOSTLY STEADY TO .60 HIGHER; EAR CORN STEADY TO 5.00 HIGHER. SOUTHEASTERN PENNSYLVANIA

CORN NO. 2-Y RANGE 2.50-2.75, AVERAGE 2.61, CONTRACT FOR HARVEST 2.47-2.66; @WHEAT NO. 2 RANGE 2.90-3.13, AVERAGE 2.99; BARLEY NO. 3 RANGE 1.35-1.70, AVERAGE 1.54, OATS NO. 2 RANGE 1.40-1.75, AVERAGE 1.56, FEW REPORTED CONTRACT FOR HARVEST 1.10; SOYBEANS NO. 1 RANGE 6.30-6.95, AVERAGE 6.52, CONTRACT FOR HARVEST 6.42-6.76; FEW REPORTED GR. SORGHUM #2 RANGE 2.40, AVERAGE 2.40; FEW REPORTED CONTRACT HARVEST 2.25; BUCKWHEAT PER HUNDRED-WEIGHT RECLEANED 15% FEW REPORTED 9.40; EAR CORN RANGE 67.00-78.00, AVERAGE 71.87.

SOUTH CENTRAL PENNSYLVANIA

CORN NO. 2-Y RANGE 2.35-2.70, AVERAGE 2.50; @WHEAT NO. 2 RANGE 2.65-2.88, FEW REPORTED 2.55, AVERAGE 2.71; BARLEY NO. 3 RANGE 1.45-1.60, AVERAGE 1.51; OATS NO. 2 RANGE 1.25-1.60, FEW REPORTED 1.80, AVERAGE 1.50; SOYBEANS NO. 1 RANGE 5.70-6.50, AVERAGE 6.01; EAR CORN RANGE 60.00-70.00; AVERAGE 64.71.

SOUTHEASTERN, CENTRAL & SOUTH CENTRAL SUMMARY CORN NO. 2-Y RANGE 2.40-2.75, AVERAGE 2.57; @WHEAT NO. 2 RANGE 2.65-3.13, AVERAGE 2.90; BARLEY NO. 3 RANGE 1.40-1.70, AVERAGE 1.53; OATS NO. 2 RANGE 1.25-1.75, AVERAGE 1.50; SOYBEANS NO. 1 RANGE 5.80-6.95, AVERAGE 6.32; EAR CORN RANGE 65.00-78.00, AVERAGE 69.21.

CENTRAL PENNSYLVANIA CORN NO. 2-Y RANGE 2.40-2.65, AVERAGE 2.55; @WHEAT NO. 2 RANGE 2.70-3.13, AVERAGE 2.88; BARLEY NO. 3 RANGE 1.45-1.65, AVERAGE 1.54; OATS NO. 2 RANGE 1.30-1.75, AVERAGE 1.46; SOYBEANS NO. 1 RANGE 5.90-6.60, FEW REPORTED 5.70, AVERAGE 6.17; EAR CORN RANGE 65.00-75.00; AVERAGE 67.83.

WESTERN PENNSYLVANIA CORN NO. 2-Y RANGE 2.10-2.55, AVERAGE 2.39; @WHEAT NO. 2 RANGE 2.85-3.00, AVERAGE 2.93; BARLEY NO. 3 RANGE 1.40-1.49, AVERAGE 1.45; OATS NO. 2 RANGE 1.45-1.85, FEW REPORTED 1.25.

AVERAGE 1.62; SOYBEANS NO. 1, RANGE 6.24-6.60, AVERAGE 6.42; EAR CORN RANGE 60.00-63.00, AVERAGE 61.00.

MONTH AGO

CORN NO. 2-Y 2.52; @WHEAT NO. 2 3.06; BARLEY NO. 3 1.83; OATS NO. 2 1.61; SOYBEANS NO. 1 5.84; EAR CORN 68.52.

YEAR AGO

CORN NO. 2-Y 3.00; @WHEAT NO. 2 3.36; BARLEY NO. 3 1.83; OATS NO. 2 1.76; SOYBEANS NO. 1 5.75; EAR CORN 87.94.

Isennock Auction

New Park, PA

July 5, 1993

Report supplied by auction

SLAUGHTER COWS: 57.00 & DOWN.

FEEDER HEIFERS: 800-805 LBS. 67.00.

FARM CALVES: 110-115 LBS. 155.00-165.00; 95-105 LBS. 150.00-170.00; 85-90 LBS. 152.00-175.00; 80-85 LBS. 120.00-150.00; 70-75 LBS. 70.00-92.00; WEAK AND ROUGH 65.00 AND DOWN.

HEIFER CALVES: UP TO 185.00.

SOWS: 325-460 LBS. 32.00-33.50.

FEEDER PIGS: 21.00-23.00 HEAD.

GOATS: SMALL 41.00 HEAD.

SMALL SALE DUE TO HOLIDAY.

THE Scoular

C • O • M • P • A • N • Y

GRAIN DIVISION

It's Time To Think About New Crop Cottonseed

Competitive October-November-December Quotes Available Today

We Also Handle:

Dried Brewers

Wet Gluten

Grain

Feed

Corn Gluten

Malt Sprout

Feed

Pellets

Bakery Feed

Call Today and Ask For:

PETER SCHLEE OR

PAT O'BRIEN

(800) 878-6521

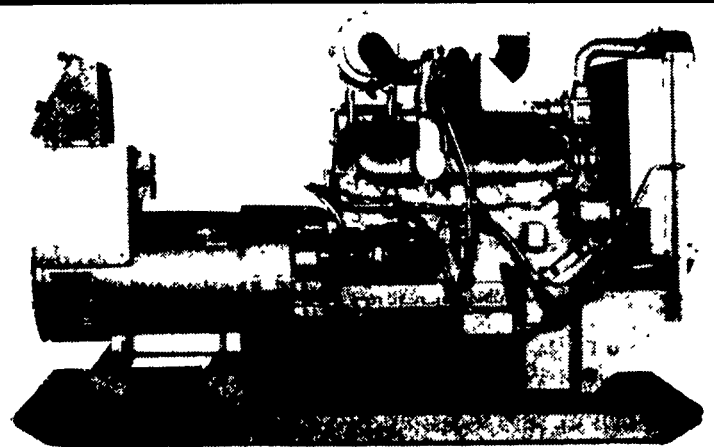
OPERATING ATLAS GRAIN FACILITY NORTHAMPTON, PA

BUYING AND SELLING WHEAT

Picked Up and Delivered Bids Available Prices Quoted for Spot or Future Delivery Prompt Payment

WE WANT TO BUY YOUR NEW CROP WHEAT

ASK FOR BILL KRUEGER (800) 487-1474



Automatic Systems

NEW

- 1 - 30 KW LP Gas
- 2 - 50 KW PTO
- 1 - 60 KW PTO

USED

- 1 - 10 KW Gas
- 1 - 15 KW P.T.O.
- 1 - 10 KW P.T.O.
- 1 - 85 KW LP Gas
- 1 - 60 KW Diesel

24 HR SERVICE

MAXI-POWER

RADIO DISPATCH

330 Fonderwhite Rd.

Lebanon, PA 17042

717-273-4544

1-800-272-MAXI



ATTENTION FARMERS:



Supplement Your Present Farm Income

Commercial Layer Contracts Available Good Long Term Investment

Available For These Pennsylvania Counties: Schuylkill, Adams, Franklin, York, Cumberland & Fulton

There Is An Immediate Need For A New Pullet House In Adams or Franklin County

For Information Call Art or Doug At 717-393-5807

HERSHEY

EQUIPMENT CO.

255 Plane Tree Drive
Lancaster, PA 17603
(717) 393-5807

IF IT'S WORTH YOUR INVESTMENT, TRUST IT TO HERSHEY



Slip Board, installed 1986

Bill Mullin, Owner

Call the "Horse Fence People."

- Superior Fencing and Lumber For Farms, Homes & Estates
- Slip Board, Post & Board, Split Rail, and many others
- Custom Fences and Gates
- Vinyl, Wire, and KeepSafe
- Wood and Metal Gates
- Jump Rails and Standards
- In-ground Warranties
- Competitive Pricing
- Professional Installers Available
- Deck, Barn & Landscape Lumber
- Huge Inventory Year-round
- Delivery Available

Horse owners across America call us for advice and superior fencing materials at great prices -- because we are the 'horse fence people.' We'll tell you the pros and cons of each type and style of fence -- from post and board to split rail, from wire to vinyl. So you'll end up with the fence that's just right for your horses.

Call toll-free today for your free copy of "How To Select The Right Fence" and more information. 1-800-441-5832

STOCKTON FENCE & LUMBER

Stockton Supply Company, 1297 Kelsall Road, Box 718, Unionville, PA 19375 (215) 347-1730