

SUMMER SPECIALS

On Used Tractors and Equipment



Ford 8N With Loader
Hydraulic Basket



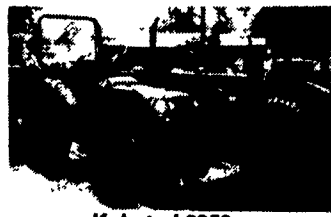
Ford 1900 4x4
With Loader & Backhoe



Kioti 4x4, 22 HP
With Loader



Ford 600 With Loader
and Hydraulic Basket



Kubota L2250
4x4 With Loader



Yanmar 186 4x4
With Loader, Power Shift

More Used Tractors & Equipment

Ford 8N w/Rear Finish Mower
Ford 600 w/Loader Hydraulic Bucket
Ford 1500 4x4 w/Loader
Ford 1510 w/Loader & Backhoe

IH 284 2WD, Gas, Very Clean

John Deere 650 4x4, Turf Tires, Low Hrs.
John Deere 650 4x4, w/Belly Mower, Very Clean

John Deere 305 Rear, 5 Gang Reel Mower
John Deere 1050 4x4, 794 Hrs., PS, Clean
John Deere 856 4x4 w/Loader & Belly Mower

John Deere 750 2WD w/Loader (Very Clean)

Kubota B6100 2WD, Mechanics Special..... \$3,600

Kubota B7200 HSE, 2WD, Low Hrs.
Kubota L2250 4x4, w/Loader
Kubota B7200 4x4 w/New 60" Belly Mower

Kubota B2150 HSD, 4x4 w/Loader
Kubota L235 4x4 w/Loader
Kubota L275 4x4 w/Loader
Kubota L2550 4x4 GST w/Loader

Yanmar 186 4x4 w/Loader, 199 Hrs.

Grisley 3 Pt. Hitch Backhoe
Troy Bilt 8 Hp Rear Tire Rototiller
Harley 6 Ft. Power Rake
Bobcat Ransome 60" 3 Wheel Mower
1989 Razorback 10,000 lb. Trailer
w/Ramps & Winch Only \$1,475

• Financing And Leasing Available

Kubota

Full Service,
Parts And Rental

NICARRY EQUIPMENT, INC.

RD #2, Box 2008, Reading, Pa. 19605
215-926-2441

Located: 4 Miles North of Reading On Rt. 61
3 Miles South of Leesport

Reg. Hours: Mon. thru Fri. 8 to 5; Sat. 8 to 3

FARM EQUIPMENT

STOUFFER BROS. INC.

1066 Lincoln Way West, Chambersburg, Pa.
Phone 717-263-8424

TRACTORS

Casey Ferguson 85 Gas Tractor
David Brown 1212
Case 107 **SOLD** Power Shift

PLANTERS

IH 400 Cyclo Planter -
Coming In!

FORAGE

JD 3950 Harvester w/2-Row
Head & Pickup — Coming In!
Gehl 1250 Harvester w/Hay
Pickup
Gehl CB400 w/TR3038 Head
& Pickup
Assortment of Gehl 99
Forage Blowers
IH 550 Harvester
NH 27 Blower

MOWER CONDITIONERS

Hesston 6200 Self-Propelled
12 Ft. Very Good Condition
(2) Vicon 281 Disc Mower
Conditioner
Hesston PT7
(1) Case 555 Mower Conditioners
Case 650 Self Propelled
IH 1190 Mower Conditioner
NH 1495 Self Propelled
Gehl 880
JD 830 Self Propelled

SKID LOADERS & UTILITY

Case 455 Track Loader
Case 590C, Cab & Standard
Hoe (1 in Stock)
Case 590K, 4WD, Standard
Loader/Backhoe
Case 580E, ROPS, Std.
Hoe
Case 1737 Skid Loader
Case 1835 Skid Loader
Dynahoe 120 Loader/Backhoe
NH L-455 Skid Loader
Gehl 4510 Skid Loader
Gehl 4610 Skid Loader

LAWN & GARDEN

Case 220 Garden Tractor
With Mower
Kubota B7100, 4WD w/Front
Snow Blower Attachment
Kubota F2100 w/5 Ft. Mower
& Dump Grass Catcher
Ariens Rider
Satoh 370D w/Loader,
4WD
Wheelhorse 312-8 With Mower
& Grass Catcher

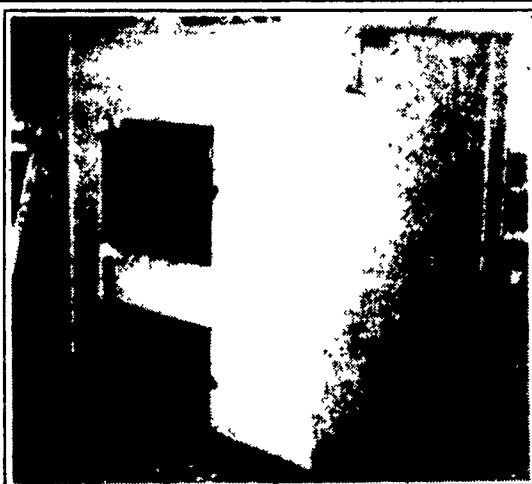
MISCELLANEOUS

JD 740 Field Cultivator (16 Ft.)
JD 10 Ft. Disk Harrow
Baltmatic Spinner Spreader
NH 304 Spreader
IH 2355 Farm Loader,
Like New!

Limited Supply...
Notched Front NF 24"x5/16
Disk Blades For Miller!

Sales, Parts And Service For...

★ CASE UTILITY ★ GEHL ★ VICON ★ WFE
★ KUBOTA ★ HESSTON ★ SAME



Model 200MF Stainless Steel. Finished in-plant and ready to ship.

Get Comforting Heat and Efficiency.

The Mahoning Outdoor Multi-Fuel Furnaces provide thermostat controlled heat by economically burning wood, coal or fuel oil. The furnace is placed 25-100 feet outside the structure to be heated; connections between the furnace and building are buried underground. Wood or coal is the primary burning fuel lasting 8-12 hours in the furnace. For convenient, automatic firing the separate oil burner combustion chamber can provide heat until wood or coal burning is desired. Both Wood/Coal & the Fuel Oil burners are enclosed to heat the same water tank. The purpose of the firebox is to heat the water-filled tank surrounding the outside unit, this heated water is then circulated through underground pipes into your home. A heating coil is installed inside your existing heat system. The thermostat controls the blower which picks the heat off the coils and delivers warm air through existing ducts and registers. There are safeties which eliminate the danger of over-pressurizing the system and automatic shutdown in case of a power failure. The Mahoning Outdoor Furnace can also be connected to an existing hydronic heating system, that operates at 180° F or less, using fin tube baseboard, cast iron radiators or hanging hydronic heaters. Only the thermostat and heating coils are installed inside your home, eliminating open fire dangers, smoke, dust and messy kindling wood boxes. Adjust the thermostat for the Mahoning Outdoor Furnace to your comfort setting and it automatically controls the water pump and blower to circulate heat to your home. You may set the thermostat for your existing heat system to back-up the Mahoning Outdoor Furnace when not in operation or in case the firebox is left to burn out. An Aquastat senses the temperature of the water in the outside unit and automatically adjusts the combustion rate to maintain the correct temperature (normally 180 degrees).

Hot Water too...

A Mahoning Outdoor Furnace is a heat exchanger. By running a cold water line from your home to the outside unit, fresh household cold water can be heated and returned to the hot water plumbing in the house. A tempering valve adjusts the hot water at the faucets to a range of 120° to 160°. This boiler system will adapt to any existing plumbing. Heat your pool & hot tub with energy generated by a Mahoning Outdoor Furnace!
For more information see your nearest dealer.

MAHONING



We have a variety of styles & sizes, and one to fit your home/business heating needs!

OUTDOOR FURNACES

Cut Your Heating Costs

With Our Outdoor Furnace!

WOOD • COAL WOOD • COAL • OIL
— STANDARD MODEL — — MULTI-FUEL MODEL —

Approved for Natural or LP Gas
Heat Your Home, Farm or Commercial Buildings with
Mahoning Outdoor Furnaces

Safe - Efficient - Durable

Look at what makes the Mahoning Outdoor Furnace a great purchase...
CLEAN. All dirt, dust, fuel and fire is outside. No chance of chimney fire or flue fire.
ELIMINATES AIR POLLUTION IN THE HOME. Smoke, fuel odors and other causes of allergies are outside the home.
SAFE FOR MOBILE HOMES. Eliminate a danger that other furnaces contained in a mobile home can cause.

NO DANGER OF EXPLOSION. This is a zero pressure furnace.
ENCLOSED COMPONENTS. The circulation pumps and electrical connections are enclosed in an insulated cabinet on the back of the Mahoning Outdoor Furnace.
ADAPTABLE. Install our furnace in any forced air heating or hot water system.
OUTSIDE SHAKER HANDLES. Coal burning and ash removal made easy.

CATALYTIC COMBUSTOR

With the aid of Corning Company, we were able to design a catalytic combustor unit that is proven to provide the following:

- 1) Cut emissions by 90%.
- 2) Improve burning efficiency by 50%.
- 3) Efficiency rating of 83 to 85%.
- 4) Makes furnace more user friendly & neighborhood acceptable.
- 5) No more smoke belching!
- 6) Use 1/3 less wood to heat your home!

Proudly Built in Indiana County Pennsylvania

MAHONING MANUFACTURING

Mahoning Outdoor Furnace Co.

R.R. Box 210, Rochester Mills, PA 15771 (412) 266-9959

FOUR SIZES:

Standard Model - Wood or Coal

Multi-Fuel Model - Wood, Coal or Oil

Model 100S both supply up to 100,000 BTU's per hour
100MF 24 inch long fire box

Model 200S both supply up to 200,000 BTU's per hour
200MF 36 inch long fire box

Model 300S both supply up to 300,000 BTU's per hour
300MF 48 inch long fire box

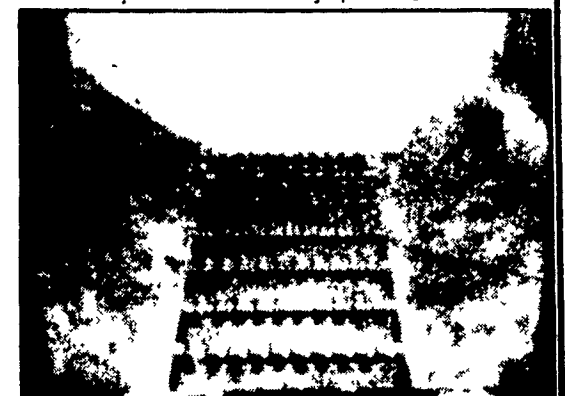
Model 400S both supply up to 400,000 BTU's per hour
400MF 60 inch long fire box

Models and specifications subject to change without notice.

MAHONING OUTDOOR MULTI-FUEL FURNACE

CONSTRUCTION FEATURES:

- 22 ga. steel exterior
- 1/4 in. plate steel firebox
- 3 ft. smoke stack of 26 ga. stainless steel (9 ft. opt.)
- 3/16 in. plate steel water tank
- 2 in. foam insulation board cover underneath
- 8 in. legs with skids for easy handling.
- Shaker grates with external shaker handle.
- Large ash pit and large clean-out door for easy ash removal.
- Furnace water level gauge and water temperature gauge.
- Primed and painted finish (stainless steel opt.)
- Burns wood cut 24" to 60" depending on model.



Shaker Grate with Exterior Shaker Handle
makes ash removal easy.

LOOK TO MAHONING OUTDOOR FURNACE FOR
EASY, WARM INEXPENSIVE LIVING!