

BEDFORD COUNTY FARMS

Working dairy farm 135 acres 75 tillable, 40 meadow w/stream. Included: pipeline, milk tank, gutter cleaner, silo w/unloader, machine sheds, four bedroom, one and half bath house. Paved road frontage near Schellburg. Only \$225,000. Cattle & machinery negotiable.

144 Acre Farm, suitable for beef or horses. 100 acres clear, bank barn and outbuildings, nice 9 room brick house, 5 bedrooms, 4 baths, 2 streams and adjoins state game lands. Centerville area \$165,000.

Stover/Slick, Inc.
Real Estate
814/224-2161 or 814/623-7009

37.8 ACRES of

Rolling Farmland just north of Manheim, Rapho Twp., Lancaster Co. Valuable land for increasing your tillable acreage. Accessible from Rt. 72 \$190,000.

Call
Gordon Hoover
717-397-7101
Jerry Frey
Real Estate

CRYSTAL SPRING, PA near I-70, 39.5

acres.....\$39,900

SOMERSET COUNTY, Lake Stonycreek area, 17.9 acres wooded.....\$36,000

BEDFORD COUNTY, Imlertown area, 17+ acre farmette, house, barn, outbuilding.....\$76,900

HERITAGE REALTY REAL ESTATE

Bedford, PA 15522
814-623-1727
Owen K. Crist, RES.
814-623-5957

SOUTHERN BEDFORD COUNTY, PA

General, Recreational and Working Farms

37 mostly open acres w/house and barn \$66,900

50 acre farm w/house, barn and pond \$81,500

82 acre working farm w/double house, barn, outbuildings and pond \$149,500.

8.5 acres w/house, barn, outbuildings, great view, \$69,000

147 mostly open acres, w/house, barn and stream \$149,500.

114 acres secluded farm, easy access to major routes, \$141,900

244 acre working dairy farm w/100 tillable acres, \$234,900

192 acre get-away w/house, barn and ponds \$219,000

19.7 acres w/secluded location for 10 year old, 3 BR, 1 1/2 bath, ranch home w/unattached garage \$82,500. Great hunting area.

11,304 open & wooded acres, \$19,900 w/\$3000 down, balance at 8%, owner financing.

Paul Plovish Real Estate
66 West 5th Avenue, Everett, PA 15537
(814) 652-5226



"PROFESSIONALISM AT WORK FOR YOU"

Contact: **DON C. MYERS**
Residence: (814) 422-8111
KENNETH L. HALL
Residence: (814) 387-6273
BONNIE DARLINGTON
Residence: (814) 364-9826

FARM & RURAL PROPERTY DIVISION



CENTRAL PENNSYLVANIA FARMS, FARMETTES AND LAND MONTGOMERY COUNTY

#6161FA DAIRY FARM LIMESTONEVILLE AREA, \$285,500 OPTION 1 (OPTION 2 \$349,500/\$425,000 OPTION 3)

- 50 acres w/48 acres tillable, 2 acres site (Option 1)
- 97 +/- acres w/90 acres tillable, 5 acres woodland, 2 acres site. (Option 2)
- 124 acres w/117 acres tillable, 5 acres woodland, 2 acres site (Option 3)
- 2 story stone & frame home w/main living area and 2 apartments, 67 tie stall dairy barn, 35'x126' heifer barn, 20'x70' & 20'x72' silos, lagoon manure system, milk house outbuildings.
- Located in an excellent agricultural area, very well maintained, limestone soil.

CENTRE COUNTY

NEW LISTING #7365FA LIMITED ACREAGE DAIRY FARM, BELLEFONTE AREA, \$239,500 (44 ACRES) OR \$199,500 (31 ACRES)

- 25 acres open, 17 acres wooded, 2 acres site (44 acre option)
- 25 acres open, 4 acres wooded, 2 acres site (31 acre option)
- Two story stone house with frame attachment, 36'x169' tie stall dairy barn with 60 stalls, 800 and 400 gallon bulk tanks, pipeline milker, 42'x64' heifer barn, 20'x70' Star sealed silo (bottom unloader), 20'x70' Ribstone silo (top unloader)
- This farm has been well cared for by the present owners. It would be suitable for conversion for horses or cattle, or for use as a country residence also.

#7303 FA 125 ACRE DAIRY FARM, MILLHEIM AREA, \$339,500

- Approximately 125 acres, with 116 tillable, 4.5 acres woodland, 5 acres site and miscellaneous.
- Buildings include a sound two story, 4 bedroom plank constructed home, a two story bank barn with a 28 stall flat parlor with a pipeline, a 72'x80' free stall barn, a 20'x80' concrete stove silo, a 20'x92' poured concrete silo, a frame implement shed, and a 1000 bushel corn crib.
- This farm has been well maintained and is presently in operation. The tillable land ranges from gently rolling to moderately steep. An additional adjacent 72 acre tract with 63 acres tillable is available.

#6168FB 8.5 ACRE FARMETTE, POTTERS MILLS AREA \$209,500.

- 8.5 acres, with 1 acre site, balance tillable.
- 1 story 28'x52' ranch home in immaculate condition, and a 30'x48' heated and insulated garage.
- This listing is well suited as a farmette for horses. It has nice views, quality landscaping, and subdivision potential. The house and garage are very well built and cared for. The garage has potential for use as an office or in-home business.

#6154FA 55 +/- ACRE HORSE FARM, BELLEFONTE AREA, \$325,000.

- Approx. 55 acres, with 18 tillable, 20 pasture, 13 woods, 4 site and misc.
- Sound buildings include a 2 story double house, two story bank barn, a 60'x120' clear span riding arena, a separate 28'x42' horse barn, a 20'x120' implement shed, and other outbuildings.
- There are a total of 24 box stalls for horses. The farm has an outdoor riding area, and a paved barnyard. It is in a desirable geographical location in Centre Co.

HUNTINGDON COUNTY

#7309FA 158 ACRE DAIRY FARM, TYRONE AREA, \$339,500

- Approximately 158 acres, with 119 acres tillable, 18 acres pasture, 18 acres woodland and 3 acres site area.
- Buildings include a two story brick home with stucco exterior, a two story bank barn with a 38'x110' one story attachment with 50 tie stalls, a 16'x70' pole building, 20'x60', 18'x50' and 10'x35' silos and a 12'x53' trailer..
- This farm has productive, Hagerstown soil, and a very private, but easily accessible location. The pipeline, bulk tank and associated dairy equipment have been sold.

#134 FA - RIVER BOTTOM LAND - ALEXANDRIA AREA - \$99,500

- 55+ Acres (45.6 tillable, highly productive)
- Ideal for truck cropping and irrigation
- Situated in an excellent location for direct (roadside) marketing

MIFFLIN COUNTY

#7278FA 123 ACRE DAIRY FARM, McVEY TOWN AREA, \$424,000

- Approx. 123 acres, 81 tillable, 30 woodland, 12 acres site and pasture
- Remodeled stone house, 2 story, bank barn, implement shed, corn cribs, 2 car garage
- This farm has gently to moderately rolling land and active Conrail Railroad borders the North side of the farm

LYCOMING COUNTY:

#6026FA 197 ACRE GENERAL OR RECREATIONAL FARM - MUNCY AREA - \$224,500 WITH TIMBER \$187,500 WITHOUT TIMBER

- Approximately 197 acres, with 80 acres tillable, 113 acres pasture and woodland, 2 acres site, 2 acres roads.
- This farm has a small 2 story home that would be well suited for use as a cabin, and two concrete block silos.
- Approximately 50 to 60 acres of the woodland on this farm has not been timbered since 1920. There are four small streams, two with natural waterfalls, and several springs. It has a substantial gravel township road frontage. This property is ideal for hunting and recreational use.

DETAILED BROCHURES AVAILABLE FOR EACH LISTING ABOVE OVER 75 VACANT LAND PARCELS - 1 TO 400 ACRES AVAILABLE IDEAL FOR CABINS AND HUNTING - FREE LISTS.

MIFFLIN COUNTY

CAMP . . . New Lancaster Valley - 3 BR, Full Bath, Basement. Well & Septic on 1.68 Ac. State Game Land out back. Only \$39,900. Call Larry. 717-248-5164

COUNTRY FARMETTE

Great Location near Country Club includes: 7 Acres with Fruit Trees, Barn, Shed, 4 Car Garage. Price Has Been Reduced to \$105,000. Come See, Make An Offer. Call Bob. 717-248-2793

99 ACRE FARM

Completely Remodeled Farmhouse With 4 Bdrs, 2 Baths, LR, DR, Kitchen has Barnboard Cabinets, Carport and Screened-in Porch. Property has Bank Barn, Chicken Coop, and Pond. Priced right at \$195,000.00. Call Mona Smith. 717-242-2653

Coldwell Banker Kerstetter Realty, Inc.
717-248-2122

NORTH CENTRAL PA

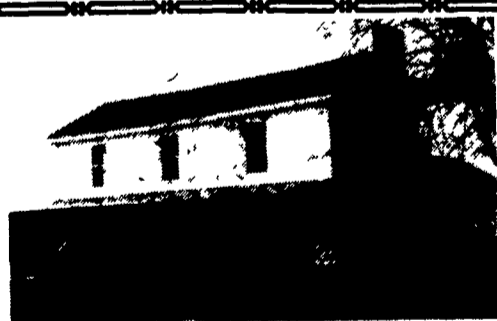
Operating dairy farm, 150+ acres, nice 52 stall cow barn, 2 silos, good 2 sty 4 bdrm home, centrally located between Mansfield, Elmira, and Troy, asking \$185,000 #1237.

148.41 acres 40 ac. open land, bal. wooded, exc perc site, Jackson Twp., asking \$120,000 #1241.

Own your own business. Meat processing plant & equipment. All set up to go, 11+ acres w/home included, 3 bdrms, 2 baths, family rm, Lr, Dr, Great setup. Only \$135,000 #1225.

Dairy Farm, 100 cow barn + 150 river bottom acres, barn, milking parlor, 5 silos, machine shed, hay storage, main house has 3 bdrms, 2 baths, garage, in-ground pool + more, tenant house 4 bdrms, 1 1/2 baths, etc. Much more on this once in a lifetime offering, asking \$340,000 #1215

Koch 9 Cone Street Wellsboro, PA 16901
717-724-3500
REAL ESTATE AND INSURANCE



42 ACRE FARM - Remodeled 3 bedroom farm home, 2 barns, 2 wells and septic, pond, 42 acres, mostly open, beautiful view, \$79,900.

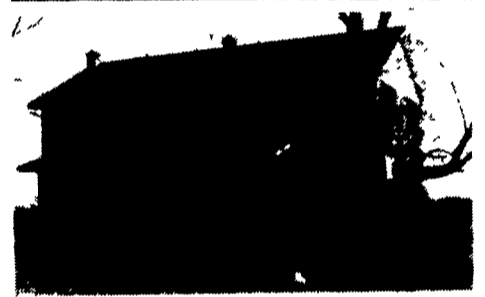
LOG HOME - 3 bedrooms, 2 baths, great room with cathedral ceilings, big country kitchen, like new, 25 acres, large hardwoods, \$155,000.

REMODELED 2-STORY HOME - 144 acres, 2 creeks, part open, \$120,000.

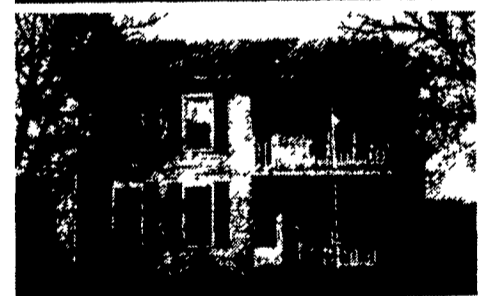
RIVERFRONT FARMETTE - Restored 2 bedroom home overlooking pond and 15 acres fronting on state road and Appomattox River, \$69,900.

Free Catalog
STATE WIDE REALTY COMPANY
Farmville, Virginia 23901
(804) 392-6163
Farms and Rural Properties
Low Prices - Low Taxes

CUMBERLAND COUNTY 2 FARMS - PERFECT FOR HOG OR POULTRY CONFINEMENT



151 Acres- 130 T.A., 20 pasture, 1 wooded, high state of cultivation, gently rolling - shady loam soils, 54x120 equipment shed, bank barn w/40 cow barn attached, 16x60 & 12x50 silos, 4000 bu. grain bin w/drying fan, stream & pond in pasture, 5 large BR dwelling, approx. 13 yrs. old-modern kitchen 2 baths.



152 Acres- 155 T.A., 25 pasture, 10 wooded, slightly rolling, dairy barn w/40 comfort stalls, 25 free stalls w/pipeline & barn cleaner. New equip. shed - 36x64, 16x60 & 12x40 silos, 2 1/2 story frame dwelling, 5 BR, 1 1/2 bath, modern kitchen & bath.

Negotiable Possession On Both Farms

BEDFORD CO.



• Near New Enterprise, Pa. 160+ Ac. Dairy Farm w/130 free stalls & milking parlor - 4 silos, very nice limestone soil - equip. shed & garage. Dwelling = 13 rm. brick - kit. = 14'x27' & L.R. = 17'x33' - 2 baths & 2nd kit. 2nd Dwelling = 3 BR brick & frame. Nice stream in pasture!! Call for fast personal service!!

MAHLON OBERHOLTZER AGENCY

Your Central PA Farm Broker
Smoketown, PA 17576 (Lanc. Co.)
717-392-1177