

★ INVENTORY CLEARANCE ★



1977 International With 14' Alum. Van Body, V8 Gas, New Roll Up Rear Door
\$2,195



1977 International Cab & Chassis, Gas Engine, 2 Speed Rear, 28,000 GVW.
\$2,595



Jeep With 8' Cattle/Stake Body, V8 Gas, Auto, 4WD
\$1,495



84 Ford Grain Truck, 370 V8 Gas, 5 & 2 Speed, New 14' Knapheide Smooth Steel Platform, 40" Removable Sides, New 15 Ton Holst.
\$10,900



7'x10' 5 Ton Hostetler Dump Trailer, 36" Front, 20" Sides & Rear, Electric Brakes
\$4,995



1983 International, V8 Gas, 5 & 2 Speed, 20' Roll Back Bed, 25000 GVW
\$8,900



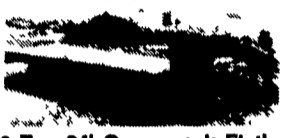
1985 Chevy, V8 Gas, Auto, 8' Fiberglass Service Body, Great Shape
\$4,450



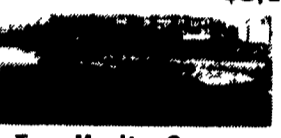
1985 Chevy C20, V8 Gas, 4 Sd., 9' Gooseneck Flatbed Body, Set Up For Pulling Trailers
\$5,195



1986 GMC, 44 Passenger Bus, V8 Gas, Auto, New Air Conditioning Unit
\$5,495



10 Ton 24' Gooseneck Flatbed Trailer, Electric Brakes, Like New
\$4,595



6 Ton Moritz Gooseneck Flatbed, Electric Brakes, 18' Deck
\$2,395



New 1992 Kiefer 6'x20' Renegade Gooseneck Livestock, Fiberglass Roof
\$5,195



Hostetler Truck Bodies & Trailers
Rt. 322 Milroy, PA 17063
717-667-3921

'90 Ford XL F150, 300 EFI, 5 spd., PS, PB, AM-FM cassette, dual tanks, new radials, 45,000 miles, black, excellent condition, \$8,300. 717-733-2873

Brand new 8' pickup box for dual wheel Dodge 350, \$1,950. Berks County. (215)756-6150.

'92 Chevy Beauville G30 extended 15 passenger, 350 Fi, auto, PB, PS, PW, PDL, cruise, tilt, dual air, AM-FM, Michelin radials, charcoal, excellent condition. \$15,900. 717-733-2873

'91 Ford XLT Lariat F250, 4x4, super cab, 351 EFI, auto, PB, PS, PW, PDL, cruise, tilt, air, AM-FM cassette, 8,800 GVW, 16,000 miles, blue & silver w/balance of factory warranty, excellent condition, \$17,900. 717-733-2873

Royal Truck & Equipment Inc.

6910 Route 309 Coopersburg, PA 18036

(215) 282-4090
(800) 283-4090

Just Off I-78, Between Allentown & Quakertown Financing Pre-Approved



1982-85 Ford E-350, Enclosed Utilities, 351 V8, AT, PS, PB, 7,000 Wat. Water Cooled Generator (Bult In) Very Clean Tks. Owned & Maintained by Local Utility Co.



Ford F350 Cab & Chassis 351, V8, 4 Spd., PS, PB, 11,000 GVW, Several To Choose From.....\$3,950 Ea. With New Stake Body.....\$4,950



1976 Ford LN7000 18' Stake Dump 3208 Cat, DSL, 5/2 Spd., PS, AB, New PA Inspection, Ready To Go To Work.



1979 Int S1800, 9' Stake Dump, V8, 4 Spd., PS, PB, 19,000 GVW, No CDL License Required. Parks Dept. Owned & Maintained Since New w/Only 21,000 Original Miles, Exceptional Must See To Appreciate



81-85 IHC 1784 5 Spd Die., 14' Stk. or Cab & Chassis, 22,500 GVW, No CDL Required, Fleet Maintained, Starting At \$3900.00, Many To Choose From While They Last 215-282-4090.



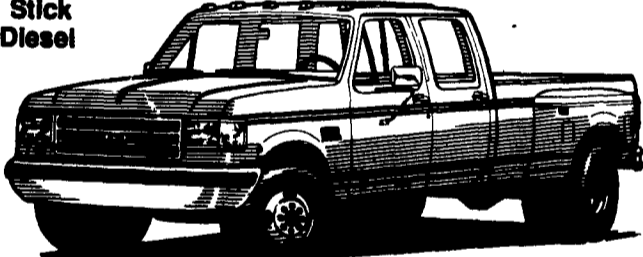
1986 GMC 7000 12' Stake Dump w/Utility Boxes, 8.2L Diesel w/Only 56,000 Miles, 5/2 Spd., PS, 28,000 GVW, Bark Repo, Taking Offers.

TWO ACRES OF ALL TYPES USED TRUCKS. "IF WE DON'T HAVE IT, WE'LL GET IT"

Mark VII - Pickups - Broncos - Bronco II - Stake Body - Crew Cab -

'93 FORD CREW CABS
As Low As **\$20,995**

- In Stock
- (3) '93 Diesel, Stick
- (3) '93 Turbo Diesel (In stock)
- (3) '93 Centurions Diesel, Stick



'93 FORD F-150
#1442, 6 Cyl., 5 Spd, PS, PB, AM-FM St., Rear Step Bumper
DELIVERED PRICE
\$10,995*



'93 FORD F-250 SUPER CAB 4x4
Diesel, Stick, PW, PL, More!
2 In Stock!



From **\$24,390**

'93 CONVERSION VANS
6 To Choose From!

V8, AC, Automatic, PS, PB, TV, Loaded, HI-Tops & Low Tops



*Prices include applicable rebates plus \$500 cash or trade. Tax, tags and doc fees additional. Payments at 10.9% APR for 60 Months.



'91 FORD F-350 XLT Dually, Crew Cab, 7.3 Diesel, AT, Loaded, 5th Wheel Hookup, 39,000 Mi., P1627
..... Call For Details



'91 CHEVY S10 PICK-UP 4.3 Liter, AT, A/C, 4x4, Tahoe Pkg., Red. #1663B...\$13,495



'92 DODGE DAKOTA Extra Cab, 3.9 V8, 4 Spd., 18,000 Mi., One Owner, #P1604B
.....On Sale For \$12,288



'91 FORD AEROSTAR VAN 6 Cyl., AT, A/C, Loaded, Eddie Bauer Pkg., 37,000 Mi. #P1598.....\$18,925



'87 FORD F-350 CREWCAB DUALY 460 V8, AT, Loaded, 59,000 Mi., One Owner, #1337A.....\$15,999



'92 FORD MARK III CONVERSION VAN V8, AT, AC, Loaded, Silver #1074A
.....On Sale For \$19,900



'91 FORD EXPLORER XLT V6, AT, AC, Loaded, 40,049 Miles, Tan #1720A....\$18,250



'92 FORD F250 5.8 liter, AT, 30,000 Mi., Like New #P1675...Sale Price \$14,999



'91 FORD BRONCO XLT AT, Loaded, 21,000 Mi., Super Clean P1609On Sale \$18,999

- '92 Aerostar Ext, XL, 22,000 MI, P1688.....\$16,999
- '92 Ford C1500 V8, AT, AC, 23,000 MI., One Owner, Clean Truck #1780A.....\$17,620
- '88 Bronco II XLT, V6, 4 Spd., AC, Local Trade, Super Clean #P1830B.....\$11,679
- '91 Chevy S10 Blazer, 4 Dr., V8, Loaded, Tahoe Pkg., Local Trade #1088A.....\$15,999
- '91 Aerostar, Eddie Bauer, 4WD, V8, AT, Loaded, P1686.....\$18,925
- '90 F-150, XLT, 5.0L, 5 Sp., 28,000 MI., 1477A.....\$19,332
- '88 Aerostar XLT, V6, AT, AC, Loaded (Sold New Here) Clean Truck #P1688..... On Sale For \$8,163
- '90 Ranger XLT, 4 Sp., One Owner, 60,000 MI., 1135A.....\$7,997
- '88 Ranger, 4 Cyl., 5 Sp., Local, 1096A.....\$5,998
- '88 Jeep Grand Cherokee, VA, AT, Loaded, Leather, 83,000 MI., 4WD, Luxury At It's Best #1224A98.488

Unless This Emblem Is On Your Car Or Truck You Probably Paid Too Much

SHEEHY LEBANON

SHEEHY FORD LINCOLN MERCURY INC.
20th & Cumberland St., Lebanon

Parts Dept. Open
Daily 8-5
Sat. 8-12
717-273-8168

9-9 Daily
9-5 Sat.
717-272-7671



Tempo - Cougar - Continental - Town Car - 4x4 - Box Van - Rangers -

Custom Vans - XLT - Grand Marquis - Marquis

Lynn - Topaz - Diesel Pickups - Mustang - F Bird