

LIVE GAME FISH Fingerlings and Adults, Large and Small Mouth Bass, Spotted and Rock Bass, Bream Crappies, Trout, Channel Cats, Bullheads, Walleyes, Perch, Minnows, Northern, Pickerel, Muskies, Red Gills, Mulletts, Carp, Eels, Turtles, Frogs, Israel Carp. Also Aquatic Plants and Water Lilies. **COLORFUL CATALOG \$2.00.** Truck, Air and Parcel Post Delivery.



ZETT'S FISH HATCHERIES
DRIFTING, PENNA. 18834
Phone: 014-348-8357

BAER'S 1994 ALMANAC

See your dealer or order by mail. \$2.00 at shops; \$3.00 postpaid from **BAER'S**

BOX 328 + LANCASTER, PA 17608 + (717) 392-0733 + Fax: 717-392-1341

33 RECREATIONAL VEHICLES

For Sale: 85 Harley Sportster, only 6500 miles. 717/664-3819.

Snowmobile SkiDoo Citation, 1981, low miles, w/cover, garage kept, excellent, \$850. 215-286-0003 anytime.

WANTED: 1984 Honda ATC Big Red, 200 three wheeler for parts. Call 215-944-9819 Berks Co.

90 Olds Cutlax 4 Dr, Blue, Quad 4 Aluminum Wheels Loaded, 10,000 Miles \$7,995

89 Honda Accord, 4 Dr, LXI \$9,800

90 Pontiac Grand Prix, 3.1 V6, Automatic, Black \$7,900

91 Honda Civic DX, 4 Door, Automatic, A/C, 28,000 Miles \$8,400

Burkholders Auto Danville, PA 717-437-3848

34 AUTOS

1974 Lincoln Town Coupe, all options, never driven in snow. 68,000k, very good condition, extra new parts, \$4500 OBO. 717-724-2160; 410-287-9030.

1987 Ply Voyager Minivan, LE, V6EFI, AC, PS, PB, AM/FM Radio. \$3795. 215-445-4309.

35 TRUCKS & TRAILERS

35 TRUCKS & TRAILERS

1961 International B-180 Grain Truck, 14' Dump, High Steel Sides, Good Condition, 36,000 GVW. \$2950. (215)286-9708.

1973 Chevy C-60 Truck, 14' Morgan body, 47,000 original miles, \$2995. Must see. 215/767-2092.

1963 Ford 16' flat dump truck, grain body, good condition; 1957 Ford 14' flat dump, grain body, good condition. 215/794-7259.

1969 Bankhead 6 car carrier, good condition, red color, \$3500 OBO 717-633-1152; 717-632-6141.

1969 Chevy C50 Dump Truck w/snow plow, good condition, \$2400 OBO. 717/755-5917.

1970 Diamond-Reo Cattle Truck 26,000GVW, 20' Bed, Very Reliable, Excellent Rubber, Inspected. \$2000 OBO. 717-423-6758.

1974 Fruehauf flatbed, 44', fair condition, \$1800. Lanco. 717-396-9718.

1977 CO freightliner, tandem axle, 8V92 Detroit, good condition, \$4800. 717-776-7725.

1977 Dodge for parts; 318Cu.in. 35,000 Miles, 4X4, 3/4 Ton Auto. Runs Good, Body Poor. 215-285-2611. \$500.

1978 Mack R600 TA, 300 engine, 6-speed trans., air ride cab, A/C, power steering, Jake brake, nice truck. 1985 26' Danco Deluxe rollback w/1978 LN8000 Ford, 3208 Cat, A/B, power steering, nice unit 717/265-9014.

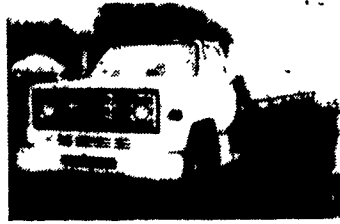
35 TRUCKS & TRAILERS

USED TRUCKS



1989 GMC Crew-Cab Dually, 1 Ton, 454, Auto, PS, PB, AC, Cruise, Tilt Wheel, AM & FM Cass. Stereo, 111,000 Miles.

\$9,900.00



1988 GMC 6000, 20,000 GVW Jerr-Dan Rollback, Hyd. Independ. Wheel Lift, 350 V-8, 4 Spd., 2 Speed, Rear, PS, PB, AM & FM, 61,000 Miles.

\$17,500.00

Financing Available

MARTIN'S AUTO SALES
1025 W. Main St., New Holland, PA 17557
(717) 656-6621

"FREE CATALOG" CALL OR WRITE

DIRECTIONS TO OUR MIDDLETOWN STORE- On your road map, we are on Route 230 mid way between Middletown & Elizabethtown. Take the Toll House Rd. exit off Rt. 283, turn and go to stop at Rt. 230, go east on 230 1-1/2 ml. on the right.



DEPARTMENT L F
4294 EAST HARRISBURG PIKE
MIDDLETOWN, PA 17057

HOURS: Mon.-Fri. 9-6
Saturday 9-2
Sunday - Closed

(717) 944-0318



4x8, 5x10, 6x12 UTILITY TRAILERS STARTING AT \$499



ALL TRAILERS BUILT "IN OUR SHOP"



STANDARD FEATURES - 16' DIAMOND STEEL DECK, BOX TUBE FRAME, JACKS, CHAINS, ALL WHEEL ELEC. BRAKES & MORE. USE YOUR OWN WHEELS/TIRES & SAVE \$225 OFF OUR LOW PRICE OF \$1,899. WOOD DECK AVAIL.



"TRAILER PARTS"
ANGLE & CHANNEL IRON, BOX TUBING, LIGHTS AXLES, COUPLERS, WIRING, CHAINS & TIEDOWNS, Etc., Etc.



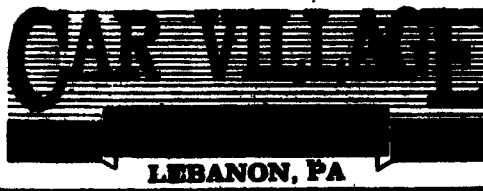
CLASS III HITCH RECEIVER 10,000 Lb. MGTWR. in Stock For Most Domestic & Import Pickup Trucks & Vans FOR MOST POPULAR FORD CHEV. & DODGE PICKUPS and FORD EXPLORER KIT OTHER APPLICATIONS UP TO \$99.95

AUTOBODY PARTS, PAINTS & SUPPLIES

- 73-79 CHEVY, FORD, TK FENDERS \$39.95-\$49.95
 - BODY FILLER-CASE OF 4-GAL. \$33.95
 - ACRYLIC ENAMEL PAINT AS LOW AS \$29.95
 - URETHANE HARDENER DOES A GAL. \$12.95
 - SANDPAPER-6" DA SELF ADHESIVE, 100 PER ROLL LOW AS \$18.50, ALSO DRY BACK DA, WET & DRY SHEETS, LONG FILE!
- 100% OF OTHER ITEMS AT BIG SAVINGS!!

Nicest Selection Of Pre Owned Trucks Anywhere!

RTE. 422, WEST LEBANON, PA (Across From Lebanon Valley Mall)



717-274-2000 FAX 717-274-2717

Business Hours Mon-Fri 9-9 Sat 9-4

THIS IS JUST A SMALL PORTION OF OUR HUGE INVENTORY



480 4x4 89 Ford F-250 6000 GVW 488, 5 Spd, O/D, 4:10 Axle, Good Tow Machine, 34,800 Miles



Super Cab Dually 92 Ford F-250 XLT Lariat Like New, 15,000 Miles, 488 i.l., AT, O/D, AC, Captain Chairs, Custom Wheels, A Real Looker



4 Wheel Drive 91 GMC Crew Cab Dually Awesome Power, 484 i.l., AT, AC, Dual Tanks, Tow Pkg., 31,000 Miles



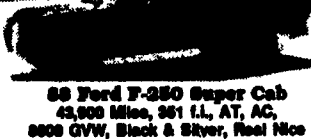
484 Flatbeds 89 GMC 3500 Short 157 W.B. Auto Dual Tanks, 25,300 Miles Will Sell As Cheese



14 Ft. Aluminum Box, 90 Ford F-450 Super Duty Real Nice, 29,000 Miles, 488 i.l. AT, Overdrive, Morgan Body, Roll Up Door, 14,600 GVW



Aluminum Walk In 87 Ford Chassis V8, AT, 27,000 Actual Miles, Very Clean



88 Ford F-250 Super Cab 43,800 Miles, 381 i.l., AT, AC, 8800 GVW, Black & Silver, Real Nice



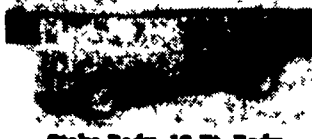
480 4x4 88 Ford F-250 Real Nice, 480 i.l., AT, AC, Class 3 & Gooseneck Hitches, 8800 GVW, Real Strong



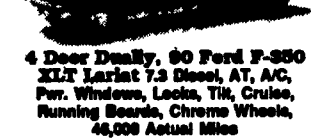
Icy Cold Reefer Body 89 Ford F-350 AT, Air Conditioning, 9 Ft. Insulated Body, 60,000 Miles



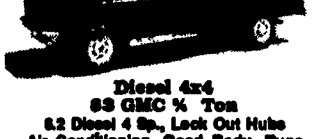
It's A Steal 92 Ford Diesel F-250 XLT 13,000 Actual Miles, 7.3 Diesel, 5 Spd. O/D AC, Factory Warranty, Tow Pkg. Only \$17,500



Stake Body, 12 Ft. Body Removable Sides, 488 i.l., 5 Spd. O/D, 29,788 Actual Miles, Very Clean



4 Door Dually, 90 Ford F-250 XLT Lariat 7.3 Diesel, AT, AC, Pwr. Windows, Locks, TK, Cruise, Running Boards, Chrome Wheels, 48,000 Actual Miles



Diesel 4x4 89 GMC 7 Ton 82 Diesel 4 Sp., Lock Out Hubs Air Conditioning, Good Body, Runs Great



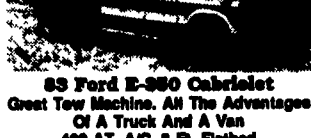
Diesel Dually 91 Ford F-350 XL 7.3 Diesel, AT, Overdrive, 18,000 Miles, Air Conditioning, Tow Pkg.



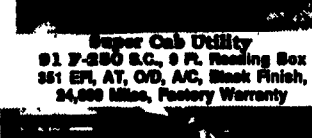
Grain Body Dump, Low Profile 90 GMC 8L Topkick 9,408 Original Miles, Like New, 888 V6, 5 Spd., 29,000 GVW, 12 Ft. Body



Super Duty Chassis 88 Ford F-450 Local Trade, 488 i.l., 5 SP O/D, Long Wheel Base \$9,900



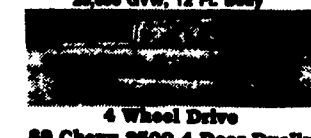
88 Ford F-250 Cabriolet Great Tow Machine. All The Advantages Of A Truck And A Van 488 AT, A/C, 8 Ft. Flatbed



Super Cab Utility 91 F-250 S.C., 9 Ft. Reading Box 381 EP, AT, O/D, AC, Black Finish, 34,800 Miles, Factory Warranty



4 Door Chassis Cab 90 Ford F-350 Single Rear Wheel, 18,000 Miles 381 i.l. AT Ready For Your Body



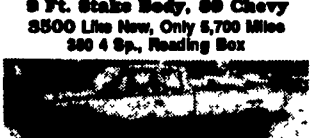
4 Wheel Drive 88 Chevy 3500 4 Door Dually On So Nice, 21,800 Miles, 484 AT, A/C, Loaded Tow Pkg. A Real Looker



Aluminum Cube Van 4,900 Miles, Factory Warranty, V8, Auto, 14 Ft. Box, Roll Up Door, Like New



Super Duty Flatbed 88 Ford F-450 34,200 Miles 488 i.l., 5 Sp O/D, Air Conditioning, 9 Ft. Flatbed Will Sell As Cheese



4 Wheel Drive 91 GMC Super Cab Dually Strong 484 i.l., auto, AC 8L Stereo, Tow Pkg.



Diesel Crew Cab, 92 Ford F-350 XLT Lariat 7.3 Diesel, AT, Overdrive, AC, 13,000 Miles, You Gotta See This One



4 Wheel Drive 91 Chevy 3500 Dually Ready To Tow 388 i.l. AT, AC, Silverado Limited Slip 4:10 A Beauty