

# ANIMAL HOUSING EXPO



July 13-14, 1993  
Lebanon Fairgrounds  
Lebanon, Pa.

A show for Northeast livestock,  
dairy and poultry producers

PENNSTATE



College of Agricultural Sciences  
Cooperative Extension

## Tunnel Ventilation For Maximum Cooling

**WALL HOUSINGS:** Galvanized slant housings with flanges for mounting to exterior wall for exhaust applications in tunnel ventilated and cooled buildings. The slant arrangement protects the components from weather, incorporates wiring knockout, provides convenient shutter mounting with quick release clips, includes outlet screen and enhances air flow through velocity regain. Housings are available knocked down crated with fan and shutters, motors shipped separately.



## TRUCKLOAD SALE... FANS... 36" & 48"



**Breeze  
Master**

BELT DRIVE OR  
DIRECT DRIVE PANEL FANS  
FOR AGRICULTURE



- Galvanized Construction
- Wide Cambered Propeller
- Riveted Blades

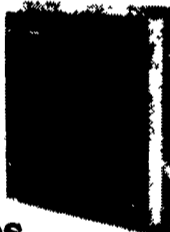
- Unique Captured Bearings — Strong formed bearing casing maintains proper alignment and spacing
- Vertical Support Frame — Supports both fan and motor to assist pulley alignment and easy adjustment
- Screens Pre-cut — For easy, quick mounting of motor
- Totally enclosed motors with shielded ball bearings, continuous duty type and energy efficient.
- Optional Discharge Diffuser Cone — Increases performance of fan without additional HP
- Optional Belt Tightener — Maintains proper belt tension for peak airflow

### ENERGY EFFICIENT ENCLOSED MOTORS



- Heavy-duty totally enclosed motors with shielded ball bearings are designed for continuous work load.
- Available in two-speed.
- Built-in thermal overload for low line-voltage protection on all single phase motors.

### ALUMINUM SHUTTERS:



- All Aluminum Construction
- Counter Balanced Blades
- Nylon Bearing
- Stainless Steel Hinge Pins
- Low Air Resistance \*
- Reduces Sticking in Dusty and Moist Conditions \*

SEE US FOR YOUR REMODELING NEEDS

Compare the difference!

## SCHAEFER Barn Kooler®

The only patented air circulation fan on the market!  
Because of its design, it provides more air movement and therefore more cooling effect than any other circulation fan.



(#VS20-6000 c.f.m., #VS24-8500 c.f.m.)

U.S. Pat #4,819,183

## CLEARANCE SALE!

- Galvanized Nursery Feeders
- Farrowing Crates
- Tenderfoot Flooring
- Grower Fencing
- Solenoid Valves
- Horizontal Finisher Fencing
- Ventilation Curtain Material
- Stainless Steel Trough
- Aluminum Shutters

### ★ SPECIAL CLEARANCE SALE!

**AGRICULTURAL HEATERS**

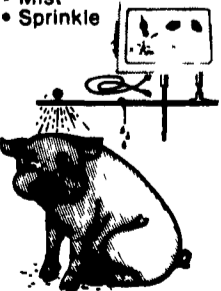


- Safety
- Quality
- Durability
- Performance

## Beat the Heat!

UNIVERSAL COOLING SYSTEM

- 3 COOLING SYSTEMS
- Droplet
- Mist
- Sprinkle



The Nitrogen level of the pit waste will be enhanced by 300% with

## PIT-BOSS™



Pit Additive To Reduce Pit Odor And Pit Solids

## BIG HUSKY

When it says BIG HUSKY its gotta mean quality

### HOG FEEDER

The Big **K** top adjustment feeders take all the abuse hogs can dish out. The top adjustment is easy to set and stays set.

#### SPECIFICATIONS

Number	Feed Cap.	Deers	Dis. Feed Trough	Dis. Feed Hopper	No. Rings	Height in	Weight
1540P	40 bu	12	54"	56"	1	44"	285 lbs
1580P	60 bu	12	54"	56"	2	60"	335 lbs
1580P	80 bu	12	54"	56"	3	80"	365 lbs

Tapered hopper is interlocked then riveted together for strong construction made from 18 ga. steel. No danger of coming apart as spot welded construction. No thin spots as spun tapered hopper. The design must be good since our competition copied it. We don't spin our hopper. When you spin metal you get weak points. This is a critical area since the hogs

are rubbing against it. Also, on our feeder if one spot does wear through it can be replaced. If a spun hopper wears out you have to replace the entire hopper



- One-piece seamless spun cover hinges back for easy filling.
- Front and rear catches hold cover secure.
- 6-piece tapered hopper swedged, then overlapped and riveted together for extra strength. No spotweld to break loose.
- 2"x6" tapered oak skids with heavy 11 gauge skid pulls for easy moving.
- Big 1 1/2" rake edge stops feed waste.
- Large feed opening so there's plenty of headroom for largest of hogs to eat.
- Feed control band double hemmed for strength and made from 16 gauge galvanized steel.

- Agitator rods securely locked to adjusting cone and double nutted on feed control band, providing positive feed flow of any kind of feed.
- Door dividers made from heavy 16 gauge Galvalume steel.
- Heavy 11 gauge sectional trough 1/4" thick, riveted together from 12 sections.
- Extra heavy wide crossbar strengthens feeder and keeps it round, doesn't let feed shut off.
- Top ring has pipe top finish.
- Four swedges in each hopper ring for added strength.

### POLY WATERER

- 80 Gal capacity
- Total polyethylene
- No rust or corrosion

- Improved UV stability over competition
- Our dependable Delrin valve and float
- TWO YEAR GUARANTEE
- STAINLESS STEEL CHEW GUARDS
- Optional hotdown brackets
- Optional heat for winter
- Large snap down 12" Cover
- Special grooved side for heater cord protection
- Gallon calibration molded into sidewall

- Two large 18 x 20 recessed drinkers
- Easy clean out with recessed drain plug
- Waterer is lightweight but 15% thicker and 20% heavier than competitors

#### SPECIFICATIONS

STOCK NUMBER	CAPACITY	DRINKER SPACES	FEEDER SPACES	PIS CAPACITY	PARAMETER
WP-80	80 gal	12x20"	2	80-gal/48-lb	36"

### HOG WATERER

- Built strong and rugged like our name.
- 100 gallon capacity.
- Five drinking spaces on each side.
- Drinking trough 3 1/2" deep, 8" wide.
- Trough made from heavy 18 gauge steel.
- Heavy galvanized steel body, lock sealed with heavy swedging.
- Drain plug on end for easy draining.
- Side straps made from stainless steel.

### BIG HUSKY SUMMER FOUNTAIN

- Dependable float valve.
- 6" top fill hole.
- Heavy 11 gauge and pull.



#### SPECIFICATIONS

Number	Height	Width	Length	Ship. Wgt.
1480	33 1/2"	36"	45"	105 lbs

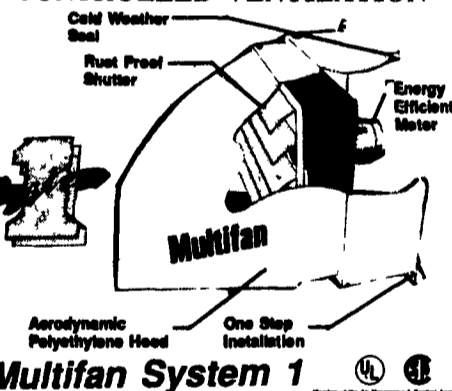
### MEDICATOR

DOS MATIC PLUS

DP20  
EZM  
Water Driven Liquid Injector

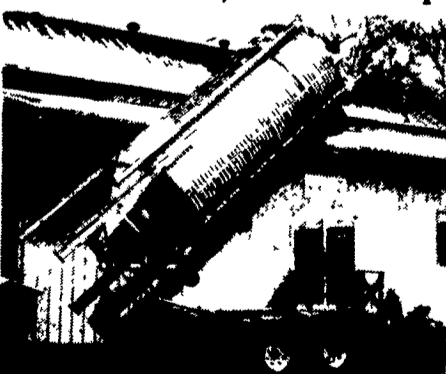


### CONTROLLED VENTILATION



## QUALITY CHORE-TIME BINS

We Assemble, Deliver & Set-Up Bins On Your Farm



Picture Showing CHORE-TIME Bin Set-Up With Hydraulic Bin Trailer



Models Available: Your Choice Of 6, 7, 9, 12 And 15 Ft. All Galvanized Hopper-Bottom Bins

Full Line Of Parts In Stock For Your Poultry And Hog Needs



Swine & Poultry Systems Specialists  
**FARMER BOY AG.**

410 E LINCOLN AVE MYERSTOWN, PA 17067

PH. 717-866-7565

Hours: M-F 7:00-5:00;  
Sat. 7:30-11:30

Check Our Warehouse Prices



WE SHIP UPS



### SEE JAY OR PAUL FOR YOUR



JAY ZIMMERMAN — Sales

PARTS AND EQUIPMENT NEEDS



PAUL HIGH — Sales