

Public Auction Register

Closing Date Monday 5:00 P.M.
of each week's publication

SAT. JUL. 3, SUN. JUL. 4 & MON. JUL. 5 - 9:30AM-4PM Each Day. Gigantic 3 Day Antique Auction. Located At The Estate Of John Osman, 930 West Beaver Ave., State College, Pa., Centre Co. Ronald J. Gilligan, Auct.

SAT. JUL. 3 - 10AM, Valuable Real Estate, Antiques, Household Goods & Furniture. Located 9 Girard Avenue, Lanc. Manor Twp., Pa. Dir.: West Of Lanc. On Columbia Ave. Turn Left At Yorgey's Cleaners Onto Cornell Ave. Immediately Turn Right, Take First Left On Girard Ave. Sale On Left. Sale By, Boies & Fay Gieske POA William Shirk, Miller & Siegrist Aucts.

SAT. JUL. 3 - 10AM Complete liquidation of Roshon Equip. Co. Selling from the former Roshon Equip. Co., RD #1 Northumberland, PA. Located approx. 3 miles south of Danville, PA or 7 miles north of Northumberland, PA along US Rt. 11. Watch for auction signs. Roshon Equip. Co. Scott Younkin & Assoc., aucts.

SAT. JUL. 3 - 10AM Comic books & board games, Southern Manheim Twp. Fire Hall, selling a private collection. E.M. Murry assoc., aucts.

SAT. JUL. 3 - 10AM Consignment Auction at Vischer Farm, Rt. 282, Nichols, NY, 1 1/2 miles south of Exit 62 off Rt. 17 Southern Tier Expressway - 20 miles north of Towanda-Wysox, Pa. via Rt. 187. Howard W. Vischer, auct.

SAT. JUL. 3 - 11:30AM, 53 Reg. Jerseys Sell. Located 7 Miles South Of Rt. 30 Or 5 Miles North Of Rt. 16 On Rt. 995, Chambersburg, Pa. Sponsored By The Cumberland Valley Jersey Breeders.

SAT. JUL. 3 - 11:30AM, Pa Pot Of Gold Sale. Located In Conjunction With The CVJB 4th Of July Sale, Franklin Co. Fairgrounds, 7 Miles South Of Rt. 30 Or 5 Miles North Of Rt. 16 On Rt. 995, Chambersburg, Pa. Sponsored By The Pa. Jersey Cattle Club.

MON. JUL. 5 - 9AM Annual public sale. Farm equipment located 7 miles S. of Martinsburg, WV or 14 miles N. of Winchester, Va. off Interstate 81, take Exit #5 (Inwood) route 51 East Approx. 3 1/2 miles East of Inwood, WV turn right at Shutts Cash Grocery - .2 mile to sale. Edgar A. Bohrer, aucts.

MON. JUL. 5 - 6PM, Local Bank Currency Sale. Located At Brickerville Fire Hall (Air Conditioned). E.M. Murry Assoc. Aucts.

MON. JUL. 5 - 6:30 PM Wholesale Furniture, A&C Diffenbach Auction Inc. 100 W. Jackson St., New Holland. Alan Diffenbach, auct.

MON. JUL. 5 - 9AM, New Furniture, Several Estates, Household Goods, Office Furniture, Jewelry, Sterling Items, Dishes, Tools, Riding Tractor, Etc. Located Haar's Auction, 1 Mi. N. Dillsburg Along Rt. 15 Or Approx. 12 Mi. S. Harrisburg Along Rt. 15 To Ore Bank Rd. Turn L. To Haar's George Haar Auct.

TUES. JUL. 6 - 4PM, Household Goods. Located Along Best Road, Caermarvon Twp., Lancaster Co. Terms By, Joyce Mast. Alvin Homing, Auct.

WED. JUL. 7 - 3PM Antiques, household goods & tools. Held at the Horst

Auction Center located at the corner of Rt. 322 & Durlach Rd. (Approx. 2 1/2 miles

West of Ephrata), Ephrata, Lanc. Co., Pa. Horst aucts.

WED. JUL. 7 - 6:30 PM Winross Trucks & Toys, A&C Diffenbach Auction Inc. 100 W. Jackson St., New Holland. Alan Diffenbach, auct.

THURS. JUL. 8 & FRI. JUL. 9 - 9:30AM, Estate, Oriental Rugs, Oak Furniture, Objects De'Art, Furniture, Silverware, Glass & China

& Automobile. Located At 326 E. Lincoln Ave., New Castle, Pa. From Rte. 18 Jefferson St. Hill, Turn On Lincoln Ave., Past Scottish Rite Cathedral & New Castle High School To Auction. Estate Of Jean Donnelly. Wayne Patterson, Auct.

THURS. JUL. 8 - 6:30PM Bankruptcy Buyouts. From Lancaster, Pa. take Rt. 30 West approx. 9 miles till

Paradise, Pa. turn left on Meadow Lane. By M.B. Glick Co. Abe Diffenbach, auct.

THURS. JUL. 8 - 7PM, 2 1/2 Story Dwelling, Bank Barn, 1.09 Acres Real Estate. Located At 805 S. Ridge Road, West Cocalico Township, Lancaster Co., Pa. (Between Denver & Reinholds). Terms By, Leonard W. Horst & Marian S. Horst. Horst Aucts.

KEYSTONE PUBLIC AUTO EXCHANGE, RT. 22/322 BETWEEN DAUPHIN & CLARKS FERRY BRIDGE

AUCTION

31 BANKS AND LENDING INSTITUTIONS OFFER APPROX. 250 BANK VEHICLES Many Absolutes*

SATURDAY, JULY 10th, 1993 AT 10:30 A.M.

- 1993 Jeep Grand Cherokee Limited, Green, 2,400 (M)
- 1992 Mercedes 190E, AT, Loaded, Dk. Blue, 18,000 (M)
- *1992 GMC Safari Van, V6, AT, Loaded, 18,000 (M)
- *1992 Dodge Shadow CP, AT, A/C, Red, 30,000 (M)
- 1992 Ford Escort LX Sdn, AT, A/C, 1,900 (M)
- 1992 Pontiac Grand Prix LE, V6, AT, Loaded, 46,000 (M)
- *1992 Mercury Topaz GS, AT, Loaded, White, 23,000 (M)
- *1992 VW Jetta Sdn, 5 Spd, A/C, Bl, 24,000 (M) (Body Dam)
- 1992 Toyota Camry Sdn., AT, Loaded, Green, 18,000 (M)
- 1992 Chevy Lumina Sdn., V6, AT, Loaded, Red, 27,000 (M)
- 1992 Dodge Dynasty Sdn., V6, AT, Loaded, Red, 9,100 (M)
- 1992 Toyota Tercel CP, 4 Spd., A/C, Green, 13,000 (M)
- 1991 Chevy W/T1500 TK, V6, White, 12,000 (M)
- 1991 Nissan Sentra XE Sdn., AT, A/C, Gray, 35,000 (M)
- 1991 Hyundai Excel GS Cp.-AT, Gld, 57,000 (M) (Body Dam)
- *1991 Ford Taurus LX Sdn., V6, AT, Ldad, Red, 30,000 (M)
- *1991 Ford Aerostar XL, V6, All Whl. Dr., AT, A/C, Green
- *1991 Ford Escort GT, AT, A/C, Silver, 51,000 (M)
- 1991 Ford F150 XLT Lariat, V8, 5 Spd., A/C, PW, PL, 50,000 (M)
- 1991 Ford Escort GT, AT, A/C, Green, 37,000 (M)
- 1991 Eagle Premier Sdn., V6, AT, Loaded, 53,000 (M)
- *1991 Geo Prizm Sdn., AT, A/C, Red, 17,000 (M)
- 1991 GMC Sonoma Tk, Blue, 39,000 (M)
- 1991 Mercury Tracer SW
- 1990 Jaguar XJ6, Bl., Bl. Int., 22,000 (M) (Books)
- 1990 Mercedes 420 Sel, V8, Loaded, Black, 12,000 (M)
- 1990 Plymouth Laser RS, 5 Spd., Loaded, Gold, 55,000 (M)
- *1990 Dodge D50 4x4 Tk., 5 Spd., Silver, 18,000 (M)
- 1990 Nissan 240 SX, 5 Spd., Loaded, Gray, 51,000 (M)
- 1990 Isuzu Trooper 4x4, V6, AT, A/C, Maroon, 42,000 (M)
- *1990 Geo Tracker 4x4, AT, Blue, White Top, 54,000 (M)
- *1990 Buick LeSabre Sdn., V6, AT, Ldad Bl., 48,000 (M) (Dam)
- 1990 Ford Escort CP, 5 Spd., A/C, Silver, 79,000 (M)
- 1990 Honda Accd LX Sdn., AT, A/C, PW, PL, Br, 45,000 (M)
- 1990 Chevy Lumina APV, V6, AT, A/C, Blue, 24,000 (M)
- 1990 Pontiac Grand Pnx, 41,000 (M)
- 1990 Geo Metro, 45,000 (M)
- 1990 Toyota Corolla, 40,000 (M)
- 1990 Chevy Lumina, AT, A/C, Blue, 77,000 (M)
- 1990 Dodge Monaco LE, V6, AT, Loaded, 40,000 (M)
- 1990 Plymouth Voyager, AT, A/C, Burgundy, 53,000 (M)
- 1989 Mar. 560 SL Rdat., Dk. Blue, 53,000 (M) (Books)
- 1989 Toyota Tk, 4 Cyl., 5 Spd., Black, 101,000 (M)
- *1989 Chevy S10 Tk., 5 Spd., Blue, 73,000 (M)
- *1989 Ford Escort GT, 5 Spd., A/C, Red, 50,000 (M)
- 1989 Chevy Cavalier Sdn., AT, A/C, 63,000 (M)
- 1989 Chevy Corsica, V6, AT, Loaded, 34,000 (M)
- 1989 Ford Aerostar XLT, V6, AT, A/C, Maroon, 79,000 (M)
- *1989 Mercury Tracer Sdn., 5 Spd., A/C, 48,000 (M)
- *1989 Pontiac Grand Am LE Sdn., AT, A/C, 69,000 (M)
- 1989 Fd. Must. Conv., 4 Cyl., AT, Loaded, Red, 51,000 (M)
- 1989 Toyota Camry, V6, AT, Loaded
- 1989 Ford Thunderbird
- 1989 Dodge Shadow
- 1989 Nissan Maxima
- 1989 Ford Escort
- 1989 Plymouth Voyager
- 1989 Mitsubishi Mighty Max 4x4, 16,000 (M)
- *1989 Chevy Cavalier, Black, 61,000 (M)
- 1989 Plymouth Voyager SE, AT, Loaded, Black, 40,000 (M)
- 1989 Dodge Caravan
- 1989 Pontiac Sunbird
- *1989 Subaru SW
- 1989 Olds Cut. Cruiser SW, V6, Ld., Blue, 59,000 (M)
- *1989 Ford Escort SW, AT, 32,000 (M)
- 1989 Lincoln Continental Signature, Gray, 56,000 (M)
- 1989 Buick Reatta, Silver, 51,000 (M)
- 1989 Toyota Corolla
- 1989 Lincoln Cont., V6, AT, Loaded, 30,000 (M)
- 1989 Chevy Celebrity Eurosport, AT, Loaded, White
- 1988 Porsche 944 Turbo, Dk. Green, 51,000 (M) (Books)
- 1988 Mercedes 560 SL Rdat., Black, Cr. Int., 63,000 (M) (Books)
- *1988 Isuzu I-Mark Sdn., AT, A/C, Red, 65,000 (M)
- 1988 Mercury Tracer Sdn., AT, A/C, Silver, 72,000 (M)
- 1988 Plymouth Voyager, AT, A/C, White, 64,000 (M)
- 1988 Ford Tempo Sdn., AT, A/C, Gray, 85,000 (M)

- 1988 Dodge Caravan, AT, A/C, Blue, 68,000 (M)
- 1988 Mazda 323 GT Turbo Sdn., 5 Spd., A/C, 62,000 (M)
- 1988 Ford Bronco II, V6, AT, Loaded, Red, 94,000 (M)
- 1988 Eagle Prem. ES Sdn., V6, AT, Ld., Wh., 62,000 (M)
- 1988 Cadillac Eldorado, V8, AT, Loaded, Black, 74,000 (M)
- 1988 Olds Calais Sdn., 5 Spd., A/C, Maroon, 94,000 (M)
- 1988 Plymouth Voyager, AT, A/C, Red, 74,000 (M)
- 1988 BMW 325is CP, V6, 5 Spd., A/C, Black, 50,000 (M)
- 1988 Ford E150 Van, AT, A/C, V8, White, 111,000 (M)
- 1988 Pontiac Gr. Am CP, AT, Loaded, Gray, 74,000 (M)
- 1988 Hyundai Excel GL Sdn., AT, A/C, Red, 43,000 (M)
- 1988 Ford Aerostar, V6, AT, Loaded, Blue/Gold, 83,000 (M)
- 1988 Ford Bronco II, V6, AT, Loaded, Blue, 87,000 (M)
- 1988 Dodge Caravan SE, V6, AT, A/C, Red, 76,000 (M)
- 1988 Cadillac Sdn. DeVille, V8, Loaded, Blue, 68,000 (M)
- 1988 Lincoln Mark VII LSC
- 1988 Acura Legend Sdn., V6, AT, A/C, 91,000 (M)
- 1988 Ford Aerostar, V6, AT, A/C, Blue
- 1988 Ford Mustang, AT, A/C, 58,000 (M) (Body Damage)
- 1988 Chrysler New Yorker, V6, AT, A/C, Blue
- 1988 Mercury Tracer, AT, A/C, Silver, 67,000 (M)
- 1988 Hyundai Excel, AT, A/C, Blue
- *1988 Chevy Camaro, V6, AT, A/C, Black, 73,000 (M)
- 1988 Acura Legend
- 1988 Ford Aerostar
- 1988 Pontiac Bonneville
- 1988 Pontiac Grand Am
- 1988 BMW 325
- 1988 Plymouth Voyager
- 1988 Pontac Firebird
- 1988 Mercedes 300 SE
- 1988 Plymouth Voyager
- 1988 Honda Accord
- *1988 Chevy Beretta, Black, 88,000 (M)
- 1988 Plymouth Grand Voyager
- 1988 Olds Cutlass, AT, A/C, PW, PL (Damaged)
- 1988 Nissan Stanza, Brown, 94,000 (M)
- 1988 Ply. Grand Voyager SE, V6, AT, A/C, 70,000 (M)
- 1988 Dodge Caravan LE, Blue/Woodgrain, 69,000 (M)
- 1988 Honda Prelude, White, 70,000 (M)
- 1988 Buick Century, 58,000 (M)
- 1988 Buick Skyhawk, 70,000 (M)
- 1988 Mercedes 420 SEL, Gray, 58,000 (M)
- 1988 Ford Bronco, V8, AT, Loaded, Blue, 80,000 (M)
- 1988 Mercury Cougar, V6, AT, A/C, 72,000 (M)
- 1987 Mazda RX7, 5 Spd., Blue, 117,000 (M)
- 1987 Pontiac Bonneville, AT, Loaded, Maroon, 127,000 (M)
- *1987 Honda Accord, CP, 5 Spd., Blue, 112,000 (M)
- *1987 Chevy Camaro Iroc, AT, Loaded, White, 53,000 (M)
- *1987 Chevy Cavalier Z24, 5 Spd., Loaded, Blue, 79,000 (M)
- 1987 Olds Cut. Supreme, V6, AT, A/C, Maroon, 47,000 (M)
- *1987 Chevy S10 Tk, AT, Green, 85,000 (M)
- *1987 Dodge Raider 4x4
- 1987 Mercury Lynx, 84,000 (M)
- *1987 Isuzu Trooper
- 1986 Ford Taurus Sdn., Gray, 83,000 (M)
- *1986 Ford Bronco II, V6, 5 Spd., 92,000 (M)
- *1986 Ford Bronco II, V6, 5 Spd., A/C, 94,000 (M)
- *1986 Jeep Commanche Tk., AT, 83,000 (M)
- *1986 Mercury Lynx Cp., 5 Spd., Green, 109,000 (M)
- *1986 Ford T-bird, V8, AT, A/C, Loaded, Black, 116,000 (M)
- *1986 Pontiac Sunbird SE, AT, A/C, Blue, 63,000 (M)
- *1986 Dodge Aries Sdn., AT, A/C, Blue, 87,000 (M)
- *1986 Plymouth Voyager LE, AT, A/C, 90,000 (M)
- 1986 Buick Regal
- *1985 Cadillac Cp. Deville (no motor)
- *1985 Mercury Lynx SW, AT, A/C
- *1985 Nissan Sentra, 5 Spd., Silver, 83,000 (M)
- 1985 Chevy Cavalier Cp., 64,000 (M)
- 1985 Chevy S10 Blazer, V6, 65,000 (M)
- *1984 Chevy Cavalier SW, AT, A/C, Silver, 100,000 (M)
- *1984 Honda Civic, 5 Spd., 107,000 (M)
- 1983 Chevy S10 TK 4x4, V6, 112,000 (M)
- *1982 Dodge B-150 Van, Blue
- *1981 Mercury Grand Marquis, 131,000 (M)

All vehicles listed above with an asterisk (*) sold "as is" to the highest bidder regardless of price!! All others are sold with the right to "accept or reject" the bid. TERMS: Public buyers - cash deposit of \$700.00 plus additional 25% of purchase price in cash on day of auction. Balance due next business day - in cash only!! No exceptions! Dealer checks accepted. Temp. tags w/proof of insurance, title work/notary on premises. Plenty of parking and food. Call: 717-921-2200 for consignment information.

THIS IS A PARTIAL LISTING OF VEHICLES. THERE WILL BE APPROX. 100 MORE REPOSSESSIONS AND OFF LEASE VEHICLES EXPECTED IN THE SALE

NOTE: GMAC WILL OFFER APPROX. 30 UNITS TO DEALERS ONLY WITH THE RIGHT TO ACCEPT TO REJECT THE BIDS RUNNING IN THE "C LANE" AT APPROX. 11:30.

Information believed to be accurate but not guaranteed and subject to change or redemption.

APPROX. 150 DEALER AND PUBLIC UNITS IN ADDITION WILL ALSO BE AVAILABLE FOR SALE DAY

IF YOU WISH TO SELL A VEHICLE, CALL NOW FOR INFO: 717-921-2200

PLEASE NOTE: CHILDREN UNDER 16 YRS. OF AGE WILL NOT BE ADMITTED UNDER ANY CIRCUMSTANCES!!



1111 Rt. 22-322
Dauphin, Pennsylvania 17018
717-921-2200

BUCKS COUNTY BANK, CCNB, DAUPHIN DEPOSIT BANK, DAFU, DAUPHIN NATIONAL BANK, DELAWARE TRUST, DAUPHIN COUNTY DISTRICT ATRNY, DROVERS & MECHANICS FARMERS 1ST BANK, 1ST EASTERN BANK, 1ST NTL TRUST BANK, FIRST PA BANK, FOOD MERCHANTS CREDIT UNION, GMAC, HAMILTON BANK, INTEGRAL BANK, LEHIGH VALLEY BANK, MELLON BANK, MERIDIAN BANK, NCFU, PA NATIONAL BANK, PNCCC, PEOPLES 1ST FCU, PEOPLES STATE BANK, STAR STATES LEASING, WILLIAMSPORT NAT'L BANK, US MARSHALL SERVICE, WILLIAMSPORT NATIONAL BANK.

AH-000057-L

VERY LARGE TWO-DAY AUCTION Edward A. Gibbs Estate

50 YEARS COLLECTION OF ALL KINDS OF ANTIQUE WOOD HAND TOOLS 100's IN REAL NICE CONDITION. MANY HARD TO FIND & SIGNED.

Sat., July 17, at 8:00 A.M.
Sat., July 24, at 8:00 A.M., 1993

Location: Take Route #94 Exit off Route #15 3-Miles South to Lake Meade Road thence 4/10 mile to sale (turn east) **OR** Take Route #94 12 Miles North of Hanover to same Lake Meade Road in Adams Co, PA.

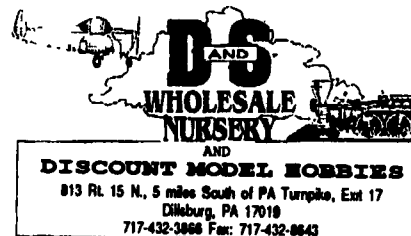
(Sale signs posted) Terms: Cash or checks. No out of state checks without your bank letter of credit.

No inspection until sale day.

SHIRLEY M. WOLF, EXECUTRIX
1045 Lake Meade Road
East Berlin, PA 17316

CLAIR R. SLAYBAUGH, Auctioneer
PA Lic. #856L

WATCH FOR FULL AD NEXT WEEK



DISCOUNT MODEL HOBBIES

813 Rt. 15 N, 5 miles South of PA Turnpike, Exit 17
Dillsburg, PA 17018
717-432-3868 Fax: 717-432-8643

NURSERY AUCTION

9000 + B&B &

Container Nursery Stock Ready To Sell - Well Maintained

MONDAY, JULY 19

8:30 A.M.

D & S NURSERY & MODEL HOBBIES

813 Rt. 15 N, Dillsburg, PA
Phone: 717-432-3866

LOCATION: 22 miles N of Gettysburg & 10 miles SW of Harrisburg, PA. Exit PA turnpike at Exit 17 (Gettysburg exit). Go south on Rt. 15, 5 miles D & S Nursery.

TERMS: In full day of auction. Cash deposit or signed check upon registration.

REMOVAL: By July 24 or items will revert back to seller, no exceptions. Buyers must furnish own burlap string and tarping.

MOTEL: Nesbit Motel in Dillsburg 717-432-3651. Shelly's Motor Court in Dillsburg 717-432-5113.

PARTIAL LISTING ONLY: SHADES: Maples, Sugar, Red Sunset, Crimson King, Oct. Glory, Jap Crimson Queen, Jap Suminagashi, Jap Ribbonleaf, Variegated. OAK: Red, Pin Oak, Scarlet Oak, Mt. Ash Cardinal. PEAR: Aristocrat, Chantideer Flw., Redspire Flw., Blireiana, PEACH DBL RED FLW., Sweetgum Corkscrew Willow, Zerkova Village. ORNAMENTALS: Wp. Cherry, White Wp. Cherry, Walking Stick. CRABS: Sargent Candy mint, Pink Princess, WP Candyapple Austree. CONIFERS: Dwf. Alberta, Dwf. Birds Nest, WP Norway, Spreading Yew, Upright Yew. AZALEAS: Hershey Red, Hino Crimson, Hot Shot, Mother's Day, Stewartsonian, Haps Pink, Rosebud, Tradition, Delaware Valley White, Asst. Deciduous. RHODYS: Aglo, Janet Blair, Ken Janeck, Rio, King Tut, Roseum Elegans, Nova Zembla, Teddy Bear, Chionoides, Mrs. T. H. Lowinsky. SHRUBS: Euan. Emerald Galety, Emerald N Gold, Golden, Silver King. LEUCOTHOE: Compact, Rainbow, Pieris. ARBS: George Peabody, Emerald Grn, Globe, Golden Globe, Hetz Midget, Holmstruppi, Golden Biota, Pyr Upright, Sudwelli. CYPRESS: Boulevard, Sungold, Goldthread. BARBERRY: Crimson Pygmy, Grn. Truehedge, Burning Bush, Dwf. Butterfly Bush, Crape Myrtle Firebird, Hibiscus, Common Lilac. SPIREA: Goldflame, Halwards Silver, Little Princess. VIB: Leatherleaf, Dbl. File. HOLLY: Blue Prince, Blue Princess, Inkberry, Nellie Stevens, China Girl, Dwf. Male Winterberry. JUNIPERS: Wichita Blue, Blue Star, Sgl. Graft, Parsons, Skyrocket, Blue Hetzi, Gold Tip Pfitzer, Old Gold, Blue Poms, Gold Poms, Whitespire Birch. GROUND COVER: Day Lilies, Mini Stella D'oro, Winter Creeper. GRASSES: Dwf. Fountain, Var. Liriope, Blue Liriope.

CALL NURSERY OR AUCTION SERVICE FOR COMPLETE BROCHURE. NO CALLS AFTER 7 P.M.

Reimold Bros. Auction & Marketing Service

Transfer, PA
Bob Reimold, Auctioneer

AU-000753-L
Phone: 800-772-7653