

Forest Restoration Garners

(Continued from Page A1)

directed by the Bureau of Forestry, requires farmers to develop a forest management plan for properties and pledge to abide by a stewardship ethic in managing their woodlands.

While a faculty member of Lower Merion High School, Art started the first formal "stream adoption" in Pennsylvania in 1974. According to Mary, many of Art's enthusiastic students, with

him as mentor, worked evenings and weekends building stream dams and planting stream banks in an effort to improve the ecology of historic Mill Creek, which once furnished drinking water to Washington's soldiers en route to Valley Forge.

At the time the stream was "adopted," it was almost dead, according to the Wolfes, with a biological index of 1. Five years later, the stream had a population

of native brown trout.

Art taught geology, astronomy, and earth science at Lower Merion High School, and was outstanding earth science teacher in 1975. He organized the Lower Merion-Narberth Watershed Association and was its executive director for nine years.

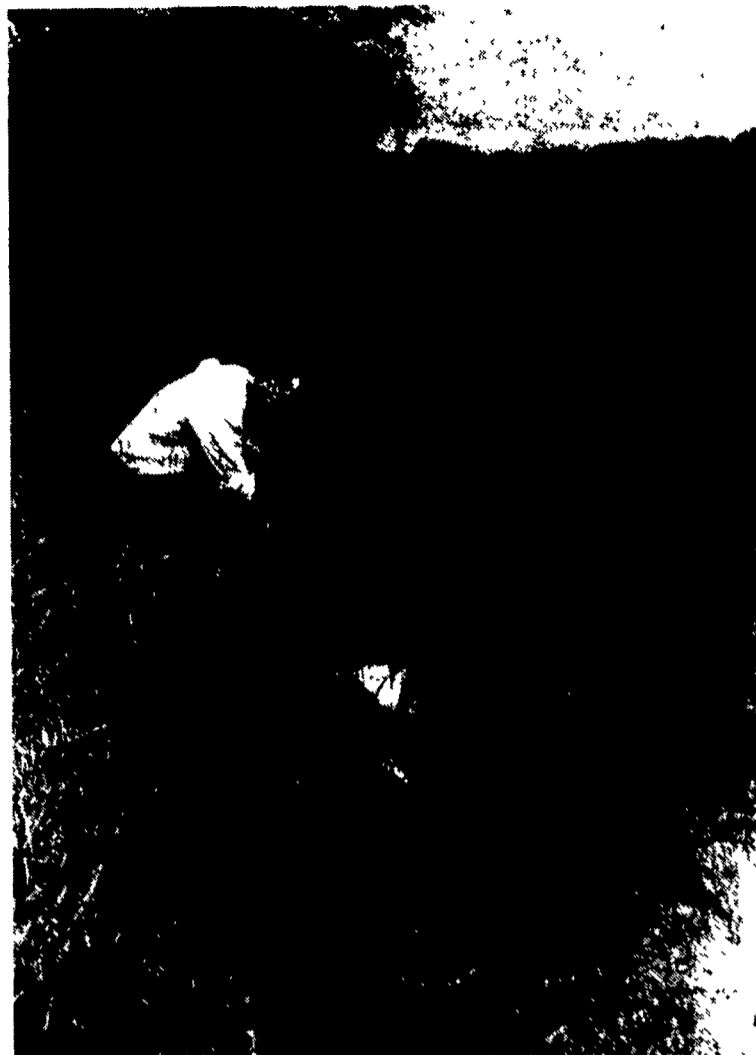
After retiring from teaching in 1982, Art and Mary Wolfe purchased land in Adams County, where Mary's father established a

fruit tree nursery. Mary's brother, Melvin Worley, continues to grow a variety of fruit, ornamental, and nut trees, and a large selection of old-time varieties of apple trees.

Remnants of road
On a recent tour of his farm, Art pointed to the remnants of a road ending at a stream, now heavily in forest, that a little more than a
(Turn to Page A31)



Wolfe planted more than 30 various nut trees in a lane separating the corn and soybean fields. Nut tree varieties include pecan and chestnut.



The Wolfes installed some conservation practices on the farm, including a three-foot deep water retention pond constructed in 1992 that helps control sediment and runoff from fields.



PENNSYLVANIA

Anderson Tractor Sales
Shrewsbury, PA 17361
717-235-0213

Burchfields, Inc.
Martinsburg, PA 16662
814-793-2194

Lenhartsville Garage
Lenhartsville, PA 19534
215-562-2901

A.L. Herr
Quarryville, PA 17566
717-786-3521

Holtry's
Roxbury, PA 17251
717-532-7261

Lawn Care Of PA
Martindale, PA 17549
215-445-4541

J.L. Peachy
Winfield, PA 17889
717-966-0465

R & W Eq. Co.
Carlisle, PA 17013
717-243-2686

Raffensberger's
Dallastown, PA 17313
717-244-7941

O.C. Rice Inc.
Biglerville, PA 17307
717-677-8135

Rockwood Hwd.
Rockwood, PA 15557
814-926-2735

Route 45 - S & S
Spring Mills, PA 16875
814-422-8805

Steve's Lawn Mower
St. Mary's, PA 15857
814-834-6749

Stouffer Bros.
Chambersburg, PA 17201
717-263-8424

T & H Equip.
Harrisburg, PA 17109
717-545-2051

C.H. Waltz
Logan Station, PA 17728
717-435-2921

Yoder Equip.
Boswell, PA 15531
814-629-6505

Zimmerman's
Bethel, PA 19507
717-933-4114

MARYLAND

Anderson Tractor Sales
Glen Arm, MD 21057
410-592-7422
800-457-5705

Baer's Garage
Hagerstown, MD 21742
301-733-8226

Bill's Lawn Mower
Fredrick, MD 21701
301-662-8684

Taneytown Farm & Hwd.
Taneytown, MD 21787
410-751-1500

WEST VIRGINIA

Adams Eq. Co.
Ft. Ashby, WV 26719
304-298-3726

NEW JERSEY

Van Fleet's Mower Shop
Flemington, NJ 08822
908-782-2689

Mayberry Sales & Svc.
Port Murray, NJ 07865
908-689-3310

S. Johnson Horff
Pole Tavern Circle, NJ 08343
609-358-2565
609-769-2565

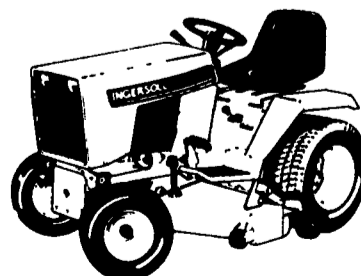
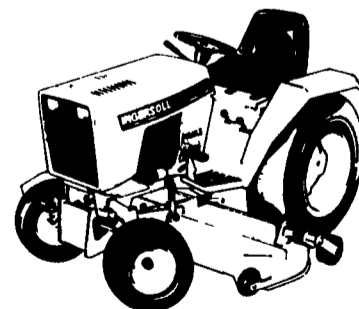


**The Only Tractors With
A LIFETIME WARRANTY!!**

**Model 3012-V
Starting At**

**\$3599⁰⁰
Plus Mower**

Limited Supply Available



**No Down Payment
No Interest
90 Days
Same As Cash**

Dealer Inquiries Invited

Call Jim Broggeman 414-582-5015

