

# State's Vegetable Production Up 88 Percent

**HARRISBURG (Dauphin Co.)** — Pennsylvania's production of fresh market and processing vegetables for 1992 was 190,720 tons, up 88 percent from 1991's production of 101,370. This includes sweet corn, tomatoes, and strawberries for fresh market and snap beans, sweet corn, and tomatoes.

Fresh market production in 1992 was 122,900 tons, up from 1991's production of 50,150 tons. Processing production was 67,820 tons, up 32 percent from 1991's 51,220 tons.

Sweet corn production increased 68 percent for fresh market, from 659,000 cwt. to 1,106,000 cwt. Production of sweet corn for processing increased 32 percent, from 11,560 tons to 15,210 tons. Fresh tomato production expanded from 344,000 cwt. to 714,000 cwt. Processing tomato production protracted 24 percent, from 27,600 tons to 34,200 tons. Strawberry production decreased from 61,000 cwt. to 59,000 cwt., or 5 percent. Processing snap bean production improved from 9,420 tons to 15,120 tons, or 61 percent.

Vegetable yields increased for every commodity listed between 1991 and 1992. Sweet corn yields

for 1992 were 57 cwt. per acre for fresh market and 8.45 tons per acre for processing. In 1991 sweet corn yields were 42 cwt. per acre for fresh market and 4.28 tons per acre for processing. Fresh market tomato yields for 1992 were 170 cwt. per acre for fresh market and 28.50 tons per acre for processing. Fresh and processing tomato yields in 1991 were 80 cwt. and 13.80 tons per acre respectively. Strawberry yields went from 38 cwt. per acre in 1991 to 39 cwt. per acre in 1992. Processing snap bean yields increased from 1.52 tons per acre in 1991 to 2.52 tons per acre in 1992.

Total harvested acreage for fresh and processing vegetables was up from 33,000 acres in 1991 to 37,200 acres in 1992. Total fresh market harvested acreage increased from 20,000 to 26,800 while total processing harvested acreage decreased from 13,300 to 10,400. Harvested acres decreased for processing tomatoes (2,000 to 1,200), strawberries (1,600 to 1,500), fresh tomatoes (4,300 to 4,200), processing snap beans (6,200 to 6,000), processing sweet corn (2,700 to 1,800), but increased for fresh sweet corn (15,700 to

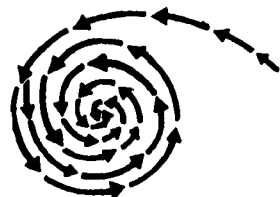
19,400).

The combined value of both fresh and processing vegetables expanded from \$27,726,000 to \$51,162,000 from 1991 to 1992. The fresh market sector totaled \$43,533,000 in 1992, compared to

\$21,900,000 in 1991. Processing vegetables totaled \$7,629,000 in 1992, while in 1991 the total was \$5,826,000. Value of production increased for fresh sweet corn (\$14,366,000 to \$20,752,000), fresh tomatoes (\$7,534,000 to

\$15,065,000), strawberries (\$6,405,000 to \$6,490,000), processing sweet corn (\$652,000 to \$751,000), processing snap beans (\$2,049,000 to \$15,120,000), and processing tomatoes (\$2,570,000 to \$2,750,000).

# BioD™



## A BIOLOGICAL COMPLEX FOR USE AS LIVESTOCK PIT DIGESTER - LIQUIFIER - DEODORIZER

- Liquifies Manure And Prevents Solids Build-Up
- Reduces Malodors
- Helps In Nitrogen Retention
- Reduces Agitation
- Greatly Increases Uniformity
- Increases biological & nutrient value

Proven Biological Products For Livestock, Poultry, Soil & Crops

# Ag-Pak

2401 East King Street  
Lebanon, PA 17042  
(717) 272-8985  
Fax (717) 272-2422

## MILLER DIESEL, INC.

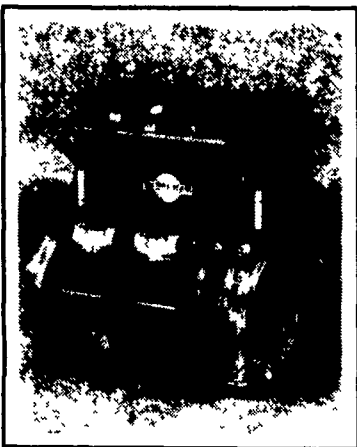
DIESEL FUEL INJECTION & TURBO CHARGER SPECIALIST  
6030 Jonestown Road  
Harrisburg, PA 17112

Phone 717-545-5931 — Interstate 81 Exit 26

### "PORTABLE GLYCLEAN" ANTI-FREEZE RECYCLING SYSTEM

- RESTORES USED ANTI-FREEZE TO BETTER THAN ORIGINAL CONDITION IN APPROX. 30 MIN.
- REDUCES HAZARDOUS WASTE
- \$\$\$ BIG SAVINGS \$\$\$

FOR COMPLETE INFORMATION, WRITE OR CALL



## CLAAS® Rollant round balers give you what you want

—one quality round bale after another.

Discover Quality...Discover Value...

Discover **CLAAS**  
THE HARVESTING SPECIALIST

The Rollant 66 makes fast work of 4'x5' bales. Its unique two-stage pick-up and close tines produce a clean, efficient harvest in less time. Rollatex netting wraps a bale in 10 seconds or less, and double-twine wraps it up in just 20.

The Rollant 46 introduced CLAAS's innovative fixed bale chamber to the marketplace. This versatile baler handles all farm operations from dry hay to silage. Nobody produces a better 4'x4' bale.

The Rollant 42 was designed for family livestock operations. This economical investment produces weather-tight 4'x4' bales for the highest nutrient content possible.

CLAAS bales mean nutrient-filled edible hay, low spoilage, and high crude protein retention.

Each Rollant offers the innovative chamber, low-profile pick-up, and world class dependability. And they all share CLAAS's international reputation for low maintenance, durability and long-life.

Call now to see how you can improve the round figures on your bottom line.

800-368-1516  
in U.S. and Canada

ROLLING ON...IN THE 90's



## When Looking For Quality BUY BRILLION

MEETS THE CHALLENGE

888, 8810 & 8812 SEEDERS



For years Brillion Grass Seeders have proven to be the best machine for planting grasses and legumes... and now they're even better! Larger, heavier boxes, high seeding rates, nylon lined seed meter, heavier frame, new drive system and more.

X-FOLD PULVERIZERS



The X-Fold pulverizers are designed to meet the needs of today's larger acreage farmers... and Brillion offers them in two models and 11 sizes from 18' through 46'. Now available with 20" Ductile Rollers.

SOIL BUILDERS



SOIL BUILDERS are a primary conservation tool that breaks up plow pan to absorb moisture and blends surface residue into the soil with enough residue left on top to control wind and water erosion. 5-13 shank.

SERIES 68 PULVI-MULCHERS ML & WL



PULVI-MULCHERS Build a firm, clod-free seedbed — one that lets all the seeds germinate at one time. 12'8", 13'10", 15'2" & 18'8" rigid; 21'8" 25' and 30' flat fold.

2 & 3 BAR CHISEL PLOWS



The Brillion 2 & 3-Bar Mounted Chisel Plow is available with 1"x2"x20" or 1 1/4"x2"x32" shanks. Available in sizes 7'-16'. Options include gauge wheel kits for both 20" & 32" shanks. Also available are 2', 4' and 6' extension kits.

FLAIL SHREDDERS



540 OR 1000 RPM FLAIL SHREDDERS Heaviest gearbox on the market eliminates the number one cause of downtime. Available in 12' and 15'. Either cup or side slicer knives.

SINGLE GANG PULVERIZERS



Also Available As Pull Type  
NEW P10 SERIES TRANSPORT CONCEPT Brillion's transport concept is new to the industry. Machine weight is hydraulically rotated over the wheels for transport. This reduced drawbar hitch weight considerably and provides ample clearance for transporting. 10' to 16'. Available with 20 ductile rolls.

3-PT. BASKET HARROW



Brillion has designed a 3 pt. S-Tine field cultivator with a larger, aggressively angled 12" diameter rolling basket, a 4-bar frame that allows for either 4" or 6" tooth spacing and an adjustable lever bar in 12', 15' and 18' sizes. Gauge wheels are optional.

DEEP TILLS



The three shank model, shown above, has a Category II hitch. With a cutting width of 7'6", it is ideal for operators with smaller acreages and horsepower. It is extremely maneuverable, yet provides the same basic deep tilling job as its "big brothers." 3 to 7 shank.

CONTACT YOUR BRILLION DEALER FOR DETAILS

PENNSYLVANIA

Adamstown  
ADAMSTOWN  
EQUIP. INC.

Altoona & Cresson  
HINES  
EQUIPMENT CO.

Bechtelville  
MILLER  
EQUIP. CO.

Berwick  
C.H. FINEHEIMER  
& SONS

Carlisle  
GUTSHALL'S, INC.

Dover  
GEORGE N.  
GROSS, INC.

Easton  
GEORGE V.  
SEIPLE

Elizabethtown  
MESSICK FARM  
EQUIPMENT CO.

Intercourse  
C.B. HOOBER  
& SON

Lancaster  
LANDIS  
BROTHERS, INC.

Lebanon  
UMBERGER'S  
OF FONTANA

Loyeville  
GUTSHALL'S, INC.

Lynnport  
KERMIT K.  
KISTLER, INC.

Mazantown  
N.H. FLICKER &  
SONS, INC.

Needmore  
CLUGSTON  
FARM EQUIPMENT

New Holland  
A.B.C. GROFF, INC.

Oakland Mills  
PEOPLES  
SALES & SERVICE

Oley  
PIKEVILLE  
EQUIPMENT, INC.

Quarryville  
GRUMELLI FARM  
SERVICE

Tamaqua  
CHARLES  
SNYDER, INC.

MARYLAND

Frederick  
CERESVILLE FORD  
NEW HOLLAND

NEW JERSEY

Bridgeton  
LESLIE FOGG

Elmer  
POLE TAVERN  
EQUIP.  
SALES CORP

Watertown  
DEERFIELD AG &  
TURF CENTER, INC.

West Grove  
S.G. LEWIS &  
SON, INC.

Columbus  
REED BROTHERS  
EQUIPMENT

Fairfield  
CALDWELL  
TRACTOR &  
EQUIPMENT